

LED Downlight CATO Series CS8R-30S-840



Light Output Ratio:	100.0%	
Luminaire Power:	33.89 W	
SHR Nominal:	1.00	Calculated using the TM5
SHR Maximum:	1.15	fine grid method.

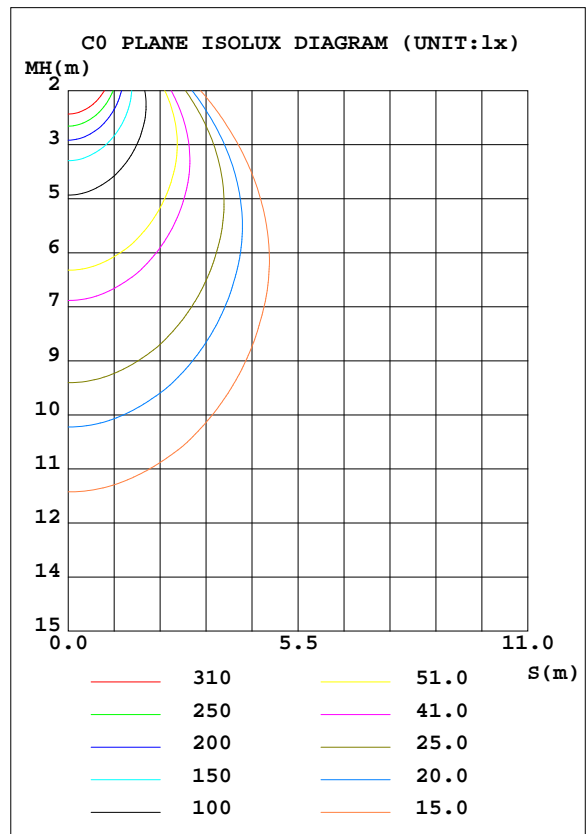
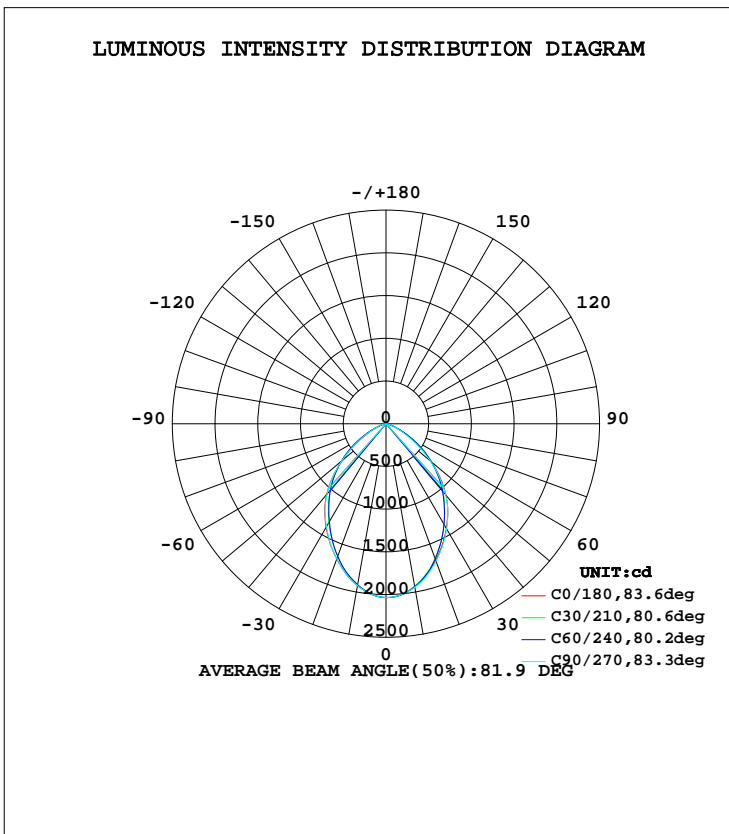
C Range: 0 - 360DEG
 C Interval: 15.0DEG
 Test Speed: HIGH
 Temperature: 25.3DEG
 Operators: Cao Chengpei
 Test Date: 2014-08-30

γ Range: 0 - 90DEG
 γ Interval: 1.0DEG
 Test System: EVERFINE GO-2000B_V1 SYSTEM V2.0.288
 Humidity: 53.0%
 Test Distance: 5.780m [K=1.0000]
 Remarks:

LUMINAIRE PHOTOMETRIC TEST REPORT

Test:U:220.4V I:0.1555A P:33.89W PF:0.9890 Lamp Flux:3529.27x1 lm		
NAME: CS8R-30S-840	TYPE:Downlight	SERIAL No.:
SPEC.:4000K	DIM.: L230mm*W230mm*H76mm	
MFR.: E-LITE LIGHTING CO.,LTD.		

DATA OF LAMP		PHOTOMETRIC DATA Eff: 104.13 lm/W			
MODEL	SAMSUNG-4000K	I _{max} (cd)	2036	S/MH(C0/180)	1.05
NOMINAL POWER(W)	36	LOR(%)	100.0	S/MH(C90/270)	1.05
RATED VOLTAGE(V)	220	TOTAL FLUX(lm)	3529.3	η UP, DN(C0-180)	0.0, 50.3
NOMINAL FLUX(lm)	3529.27	CIE CLASS	DIRECT	η UP, DN(C180-360)	0.0, 49.7
LAMPS INSIDE	1	η up(%)	0.0	CIBSE SHR NOM	1.00
TEST VOLTAGE(V)	220	η down(%)	100.0	CIBSE SHR MAX	1.15



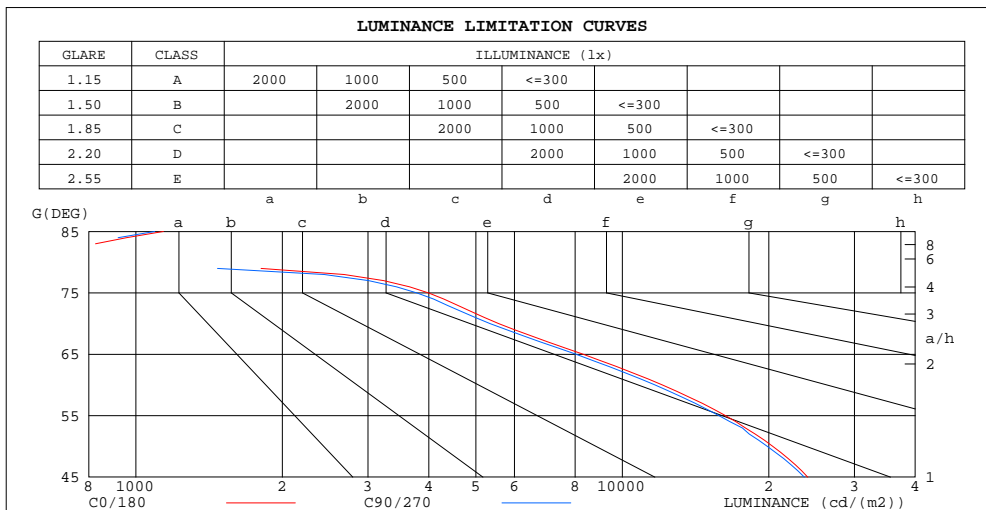
C Range: 0 - 360DEG
 C Interval: 15.0DEG
 Test Speed: HIGH
 Temperature:25.3DEG
 Operators:Cao Chengpei
 Test Date:2014-08-30

γ Range: 0 - 90DEG
 γ Interval: 1.0DEG
 Test System:EVERFINE GO-2000B_V1 SYSTEM V2.0.288
 Humidity:53.0%
 Test Distance:5.780m [K=1.0000]
 Remarks:

**ZONAL FLUX DIAGRAM
AND LUMINANCE LIMITATION CURVES**

ZONAL FLUX DIAGRAM:

γ	C0	C45	C90	C135	C180	C225	C270	C315	γ	Φ zone	Φ total	Φ lum,lamp
10	1933	1936	1943	1923	1926	1910	1924	1917	0- 10	188.8	188.8	5.35,5.35
20	1700	1684	1715	1667	1686	1646	1685	1657	10- 20	509.3	698.1	19.8,19.8
30	1413	1345	1421	1330	1401	1307	1393	1319	20- 30	700.2	1398	39.6,39.6
40	1093	1021	1087	1011	1081	989.7	1074	999.9	30- 40	752.6	2151	60.9,60.9
50	693.4	722.5	675.6	709.5	673.2	694.2	674.9	706.3	40- 50	667.6	2819	79.9,79.9
60	319.8	384.1	308.7	366.6	300.4	361.5	313.7	377.4	50- 60	450.3	3269	92.6,92.6
70	100.8	111.5	96.77	101.6	95.53	102.5	102.5	111.5	60- 70	200.0	3469	98.3,98.3
80	5.736	14.96	5.449	13.17	5.071	13.61	5.655	15.36	70- 80	53.66	3523	99.8,99.8
90	0.8381	0.5698	0.2995	0.2974	0.2184	0.2412	0.2371	0.8443	80- 90	6.653	3529	100,100
100									90-100			
110									100-110			
120									110-120			
130									120-130			
140									130-140			
150									140-150			
160									150-160			
170									160-170			
180									170-180			
DEG	LUMINOUS INTENSITY:cd									UNIT:lm		



LUMINANCE cd/(m2)		
G(DEG)	C0/180	C90/270
85	1139	1094
80	624	593
75	3997	3782
70	5570	5348
65	8308	8029
60	12090	11671
55	16307	15802
50	20392	19869
45	24043	23663

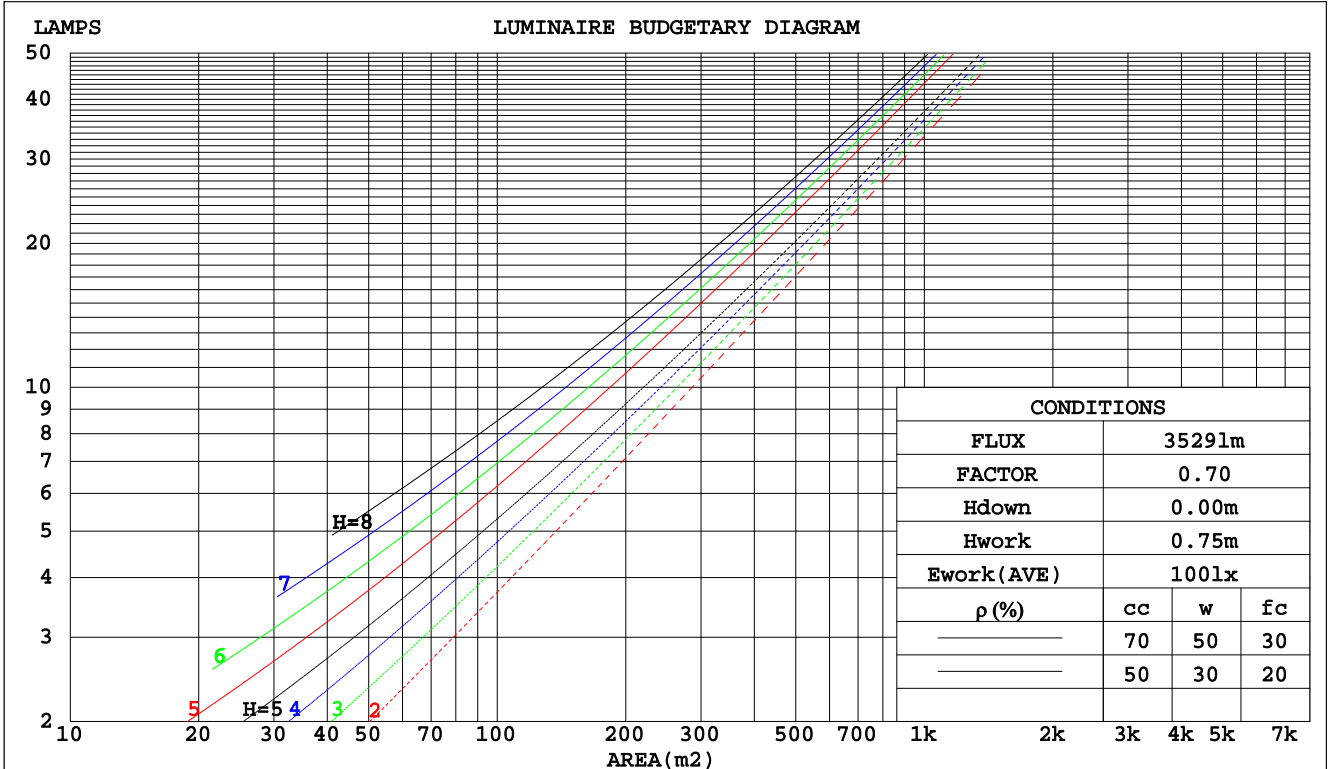
C Range: 0 - 360DEG
 C Interval: 15.0DEG
 Test Speed: HIGH
 Temperature:25.3DEG
 Operators:Cao Chengpei
 Test Date:2014-08-30

γ Range: 0 - 90DEG
 γ Interval: 1.0DEG
 Test System:EVERFINE GO-2000B_V1 SYSTEM V2.0.288
 Humidity:53.0%
 Test Distance:5.780m [K=1.0000]
 Remarks:

CU AND LUMINAIRE BUDGETARY ESTIMATE DIAGRAM

Test:U:220.4V I:0.1555A P:33.89W PF:0.9890 Lamp Flux:3529.27x1 lm		
NAME: CS8R-30S-840	TYPE:Downlight	SERIAL No.:
SPEC.:4000K	DIM.: L230mm*W230mm*H76mm	
MFR.: E-LITE LIGHTING CO.,LTD.		

pcc	80%			70%			50%			30%			10%			0
	50%	30%	10%	50%	30%	10%	50%	30%	10%	50%	30%	10%	50%	30%	10%	0
pw																0
pfc																0
RCR	RCR:Room Cavity Ratio Coefficients of Utilization(CU)															
0.0	1.19	1.19	1.19	1.16	1.16	1.16	1.11	1.11	1.11	1.06	1.06	1.06	1.02	1.02	1.02	.00
1.0	1.08	1.04	1.01	1.05	1.02	.00	1.01	.99	.97	.97	.96	.94	.94	.92	.91	.89
2.0	.97	.91	.87	.95	.90	.86	.91	.87	.84	.88	.85	.82	.85	.83	.80	.78
3.0	.87	.80	.75	.85	.79	.74	.83	.77	.73	.80	.75	.72	.78	.74	.71	.69
4.0	.78	.71	.65	.77	.70	.65	.75	.69	.64	.73	.67	.63	.71	.66	.62	.61
5.0	.71	.63	.58	.70	.63	.57	.68	.62	.57	.66	.61	.56	.65	.60	.56	.54
6.0	.65	.57	.51	.64	.57	.51	.62	.56	.51	.61	.55	.50	.59	.54	.50	.48
7.0	.60	.52	.46	.59	.51	.46	.57	.51	.46	.56	.50	.46	.55	.49	.45	.43
8.0	.55	.47	.42	.54	.47	.42	.53	.46	.42	.52	.46	.41	.51	.45	.41	.39
9.0	.51	.43	.38	.50	.43	.38	.49	.43	.38	.48	.42	.38	.47	.42	.38	.36
10.0	.47	.40	.35	.47	.40	.35	.46	.39	.35	.45	.39	.35	.44	.38	.35	.33



C Range: 0 - 360DEG
 C Interval: 15.0DEG
 Test Speed: HIGH
 Temperature:25.3DEG
 Operators:Cao Chengpei
 Test Date:2014-08-30

γ Range: 0 - 90DEG
 γ Interval: 1.0DEG
 Test System:EVERFINE GO-2000B_V1 SYSTEM V2.0.288
 Humidity:53.0%
 Test Distance:5.780m [K=1.0000]
 Remarks:

WEC AND CCEC

Test:U:220.4V I:0.1555A P:33.89W PF:0.9890 Lamp Flux:3529.27x1 lm		
NAME: CS8R-30S-840	TYPE:Downlight	SERIAL No.:
SPEC.:4000K	DIM.: L230mm*W230mm*H76mm	
MFR.: E-LITE LIGHTING CO.,LTD.		

ρcc	80%			70%			50%			30%			10%			0
ρw	50%	30%	10%	50%	30%	10%	50%	30%	10%	50%	30%	10%	50%	30%	10%	0
ρfc	20%			20%			20%			20%			20%			0
RCR	RCR:Room Cavity Ratio						Wall Exitance Coefficients(WEC)									
0.0																
1.0	.238	.135	.043	.231	.132	.042	.218	.125	.040	.206	.119	.038	.195	.113	.036	
2.0	.232	.127	.039	.226	.125	.038	.215	.120	.037	.205	.115	.036	.195	.111	.035	
3.0	.222	.118	.035	.216	.116	.035	.207	.112	.034	.198	.108	.033	.189	.105	.032	
4.0	.210	.109	.032	.205	.107	.032	.196	.104	.031	.188	.101	.031	.181	.098	.030	
5.0	.198	.101	.029	.194	.099	.029	.186	.097	.029	.179	.094	.028	.172	.092	.028	
6.0	.186	.093	.027	.183	.092	.027	.176	.090	.026	.170	.088	.026	.164	.086	.026	
7.0	.176	.087	.025	.173	.086	.025	.167	.084	.024	.161	.082	.024	.156	.081	.024	
8.0	.166	.081	.023	.163	.080	.023	.158	.079	.023	.153	.077	.022	.148	.076	.022	
9.0	.157	.076	.021	.155	.075	.021	.150	.074	.021	.145	.073	.021	.141	.071	.021	
10.0	.149	.071	.020	.147	.071	.020	.142	.070	.020	.138	.069	.019	.134	.067	.019	

ρcc	80%			70%			50%			30%			10%			0
ρw	50%	30%	10%	50%	30%	10%	50%	30%	10%	50%	30%	10%	50%	30%	10%	0
ρfc	20%			20%			20%			20%			20%			0
RCR	RCR:Room Cavity Ratio						Ceiling Cavity Exitance Coefficients(CCEC)									
0.0	.190	.190	.190	.163	.163	.163	.111	.111	.111	.064	.064	.064	.020	.020	.020	
1.0	.175	.157	.140	.150	.135	.121	.103	.093	.083	.059	.054	.048	.019	.017	.016	
2.0	.164	.132	.105	.141	.114	.091	.096	.079	.063	.056	.046	.037	.018	.015	.012	
3.0	.155	.114	.081	.133	.098	.070	.091	.068	.049	.053	.040	.029	.017	.013	.010	
4.0	.147	.100	.064	.126	.086	.056	.087	.060	.039	.050	.035	.023	.016	.011	.008	
5.0	.140	.089	.052	.120	.077	.045	.083	.054	.032	.048	.032	.019	.015	.010	.006	
6.0	.133	.081	.043	.114	.070	.038	.079	.049	.027	.046	.029	.016	.015	.009	.005	
7.0	.127	.074	.036	.109	.064	.032	.075	.045	.022	.044	.026	.013	.014	.009	.004	
8.0	.121	.068	.031	.104	.059	.027	.072	.041	.019	.042	.024	.011	.014	.008	.004	
9.0	.115	.063	.027	.099	.054	.024	.069	.038	.017	.040	.023	.010	.013	.007	.003	
10.0	.110	.058	.024	.095	.051	.021	.066	.036	.015	.038	.021	.009	.012	.007	.003	

C Range: 0 - 360DEG
 C Interval: 15.0DEG
 Test Speed: HIGH
 Temperature:25.3DEG
 Operators:Cao Chengpei
 Test Date:2014-08-30

γ Range: 0 - 90DEG
 γ Interval: 1.0DEG
 Test System:EVERFINE GO-2000B_V1 SYSTEM V2.0.288
 Humidity:53.0%
 Test Distance:5.780m [K=1.0000]
 Remarks:

UGR(Unified Glare Rating) Table

Test:U:220.4V I:0.1555A P:33.89W PF:0.9890 Lamp Flux:3529.27x1 lm		
NAME: CS8R-30S-840	TYPE:Downlight	SERIAL No.:
SPEC.:4000K	DIM.: L230mm*W230mm*H76mm	
MFR.: E-LITE LIGHTING CO.,LTD.		

ceiling/cavity	0.7	0.7	0.5	0.5	0.3	0.7	0.7	0.5	0.5	0.3
walls	0.5	0.3	0.5	0.3	0.3	0.5	0.3	0.5	0.3	0.3
working plane	0.2	0.2	0.2	0.2	0.2	0.2	0.2	0.2	0.2	0.2
Room dimensions	Viewed crosswise					Viewed endwise				
x = 2H y = 2H	22.0	23.3	22.3	23.5	23.7	21.9	23.2	22.2	23.4	23.6
3H	22.2	23.4	22.5	23.6	23.9	22.1	23.3	22.4	23.5	23.7
4H	22.2	23.3	22.5	23.6	23.8	22.1	23.2	22.4	23.5	23.7
6H	22.2	23.2	22.5	23.5	23.7	22.0	23.1	22.4	23.3	23.6
8H	22.1	23.1	22.4	23.4	23.7	22.0	23.0	22.3	23.3	23.5
12H	22.1	23.0	22.4	23.3	23.6	21.9	22.9	22.3	23.2	23.5
4H 2H	22.2	23.4	22.5	23.6	23.8	22.1	23.3	22.4	23.5	23.8
3H	22.5	23.5	22.8	23.7	24.0	22.4	23.4	22.7	23.7	23.9
4H	22.5	23.4	22.9	23.7	24.0	22.4	23.3	22.8	23.6	23.9
6H	22.5	23.3	22.9	23.6	24.0	22.4	23.2	22.8	23.5	23.8
8H	22.4	23.2	22.8	23.5	23.9	22.3	23.0	22.7	23.4	23.8
12H	22.4	23.1	22.8	23.4	23.8	22.3	22.9	22.7	23.3	23.7
8H 4H	22.4	23.2	22.9	23.5	23.9	22.3	23.1	22.8	23.4	23.8
6H	22.4	23.0	22.9	23.4	23.8	22.3	22.9	22.7	23.3	23.7
8H	22.4	22.9	22.8	23.3	23.8	22.3	22.8	22.7	23.2	23.7
12H	22.3	22.8	22.8	23.2	23.7	22.2	22.7	22.7	23.1	23.6
12H 4H	22.4	23.1	22.8	23.4	23.8	22.3	23.0	22.7	23.3	23.7
6H	22.4	22.9	22.8	23.3	23.8	22.3	22.8	22.7	23.2	23.7
8H	22.3	22.8	22.8	23.2	23.7	22.2	22.7	22.7	23.1	23.6
Variations with the observer position at spacings:										
S = 1.0H	+ 0.7 / - 1.0					+ 0.7 / - 1.0				
1.5H	+ 0.4 / - 0.5					+ 0.4 / - 0.5				
2.0H	+ 1.5 / - 1.9					+ 1.5 / - 1.9				

CIE Pub.117 Corrected 3529 lm Total Lamp Luminous Flux.(8log(F/F0) = 4.4)

C Range: 0 - 360DEG
 C Interval: 15.0DEG
 Test Speed: HIGH
 Temperature:25.3DEG
 Operators:Cao Chengpei
 Test Date:2014-08-30

γ Range: 0 - 90DEG
 γ Interval: 1.0DEG
 Test System:EVERFINE GO-2000B_V1 SYSTEM V2.0.288
 Humidity:53.0%
 Test Distance:5.780m [K=1.0000]
 Remarks:

UTILIZATION FACTORS TABLE

Test:U:220.4V I:0.1555A P:33.89W PF:0.9890 Lamp Flux:3529.27x1 lm		
NAME: CS8R-30S-840	TYPE:Downlight	SERIAL No.:
SPEC.:4000K	DIM.: L230mm*W230mm*H76mm	
MFR.: E-LITE LIGHTING CO.,LTD.		

REFLECTANCE										
Ceiling	0.8	0.8	0.8	0.7	0.7	0.7	0.5	0.5	0.5	0
Walls	0.7	0.5	0.3	0.7	0.5	0.3	0.7	0.5	0.3	0
Working plane	0.2	0.2	0.2	0.2	0.2	0.2	0.2	0.2	0.2	0
ROOM INDEX	UTILIZATION FACTORS(PERCENT) $k(RI) \times RCR = 5$									
k = 0.60	67	57	51	66	56	51	65	56	50	45
0.80	77	67	61	76	67	61	74	66	60	55
1.00	85	76	70	84	75	70	82	76	69	63
1.25	91	83	78	90	82	77	88	81	76	70
1.50	96	88	83	94	87	82	92	86	81	75
2.00	101	95	90	100	94	89	97	92	88	81
2.50	104	98	94	102	97	93	99	94	91	84
3.00	107	102	97	105	100	96	101	97	94	87
4.00	110	105	102	108	104	101	104	101	98	90
5.00	112	108	105	109	106	103	105	102	100	92
ROOM INDEX	UF(total)									Direct
According to DIN EN 13032-2 2004			Suspended				SHRNOM = 1.25			

C Range: 0 - 360DEG
 C Interval: 15.0DEG
 Test Speed: HIGH
 Temperature:25.3DEG
 Operators:Cao Chengpei
 Test Date:2014-08-30

γ Range: 0 - 90DEG
 γ Interval: 1.0DEG
 Test System:EVERFINE GO-2000B_V1 SYSTEM V2.0.288
 Humidity:53.0%
 Test Distance:5.780m [K=1.0000]
 Remarks:

ISOCANDELA DIAGRAM

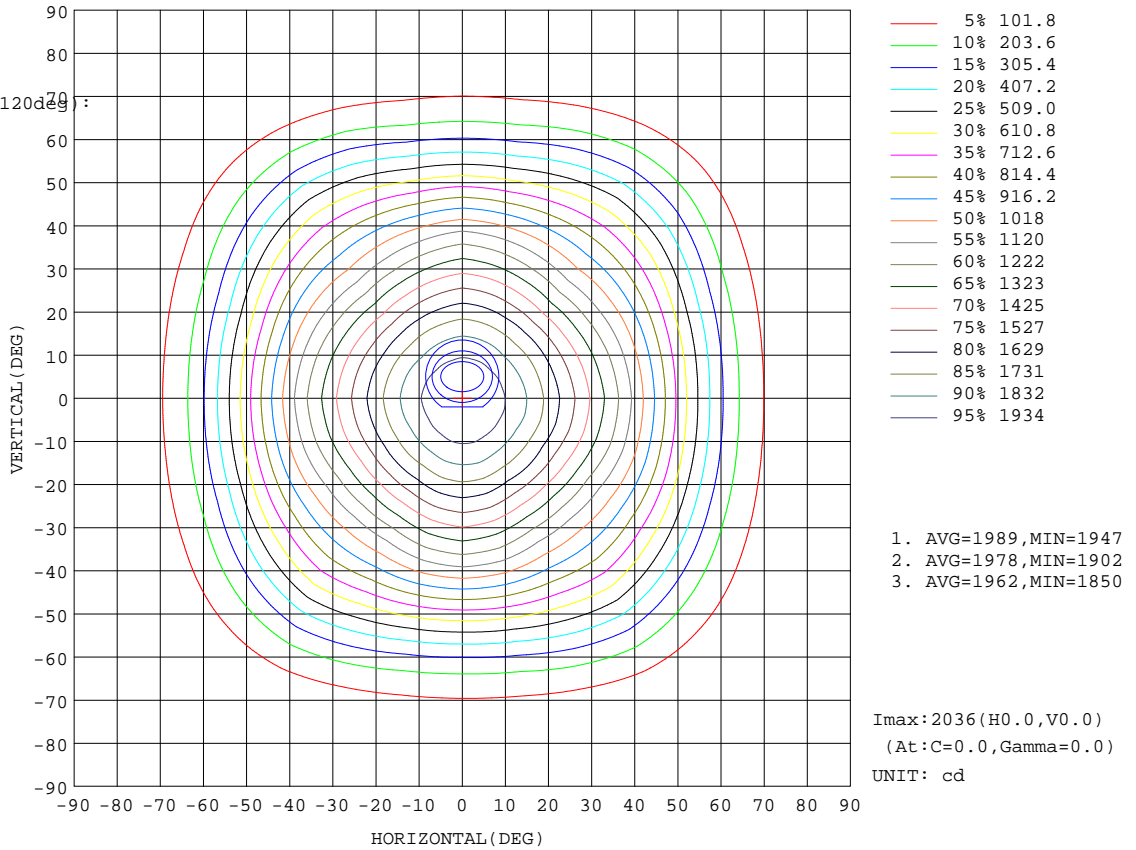
Test:U:220.4V I:0.1555A P:33.89W PF:0.9890 Lamp Flux:3529.27x1 lm		
NAME: CS8R-30S-840	TYPE:Downlight	SERIAL No.:
SPEC.:4000K	DIM.: L230mm*W230mm*H76mm	
MFR.: E-LITE LIGHTING CO.,LTD.		

Conical surface Flux(90deg):

2504.8 lm
%lum = 71.0%
%lamp = 71.0%

Conical surface Flux(120deg):

3268.9 lm
%lum = 92.6%
%lamp = 92.6%



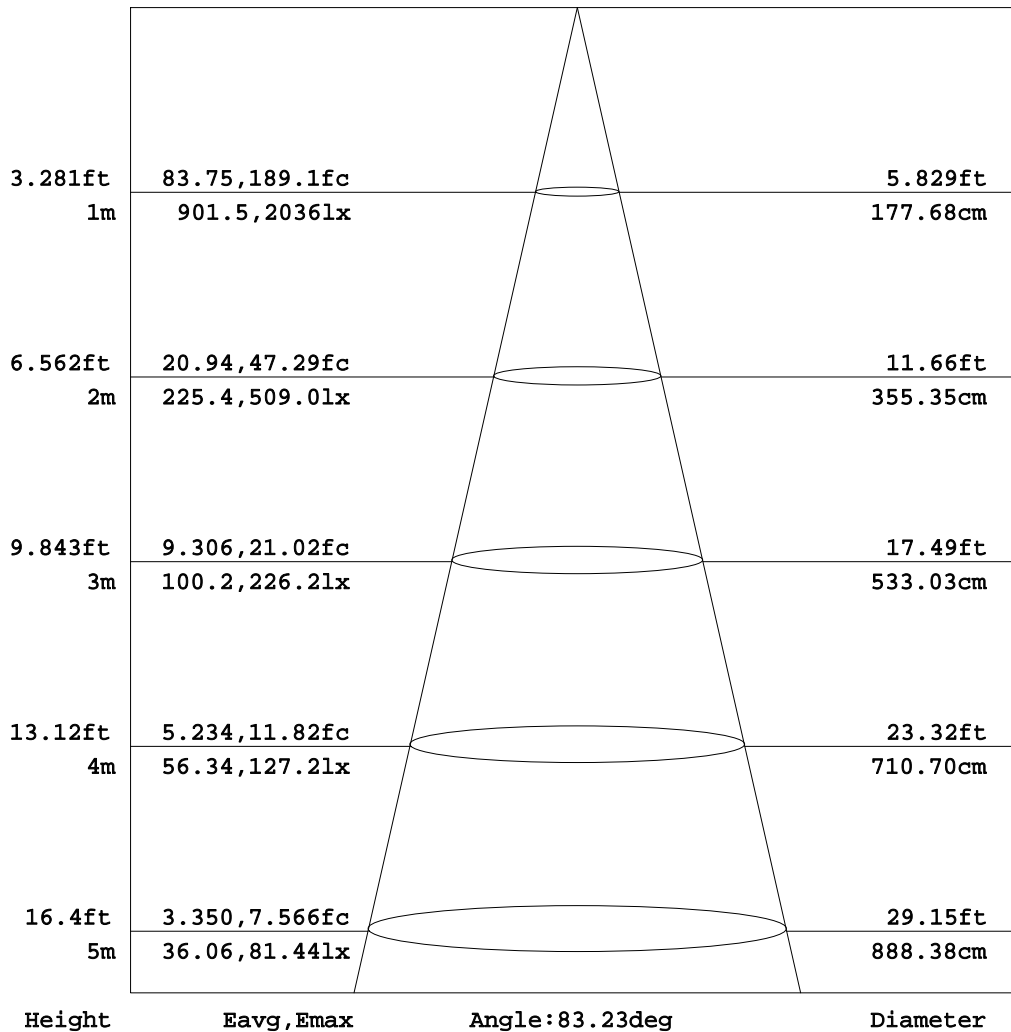
C Range: 0 - 360DEG
C Interval: 15.0DEG
Test Speed: HIGH
Temperature: 25.3DEG
Operators: Cao Chengpei
Test Date: 2014-08-30

γ Range: 0 - 90DEG
γ Interval: 1.0DEG
Test System: EVERFINE GO-2000B_V1 SYSTEM V2.0.288
Humidity: 53.0%
Test Distance: 5.780m [K=1.0000]
Remarks:

AAI Figure

Test:U:220.4V I:0.1555A P:33.89W PF:0.9890 Lamp Flux:3529.27x1 lm		
NAME: CS8R-30S-840	TYPE:Downlight	SERIAL No.:
SPEC.:4000K	DIM.: L230mm*W230mm*H76mm	
MFR.: E-LITE LIGHTING CO.,LTD.		

Flux out:2296 lm



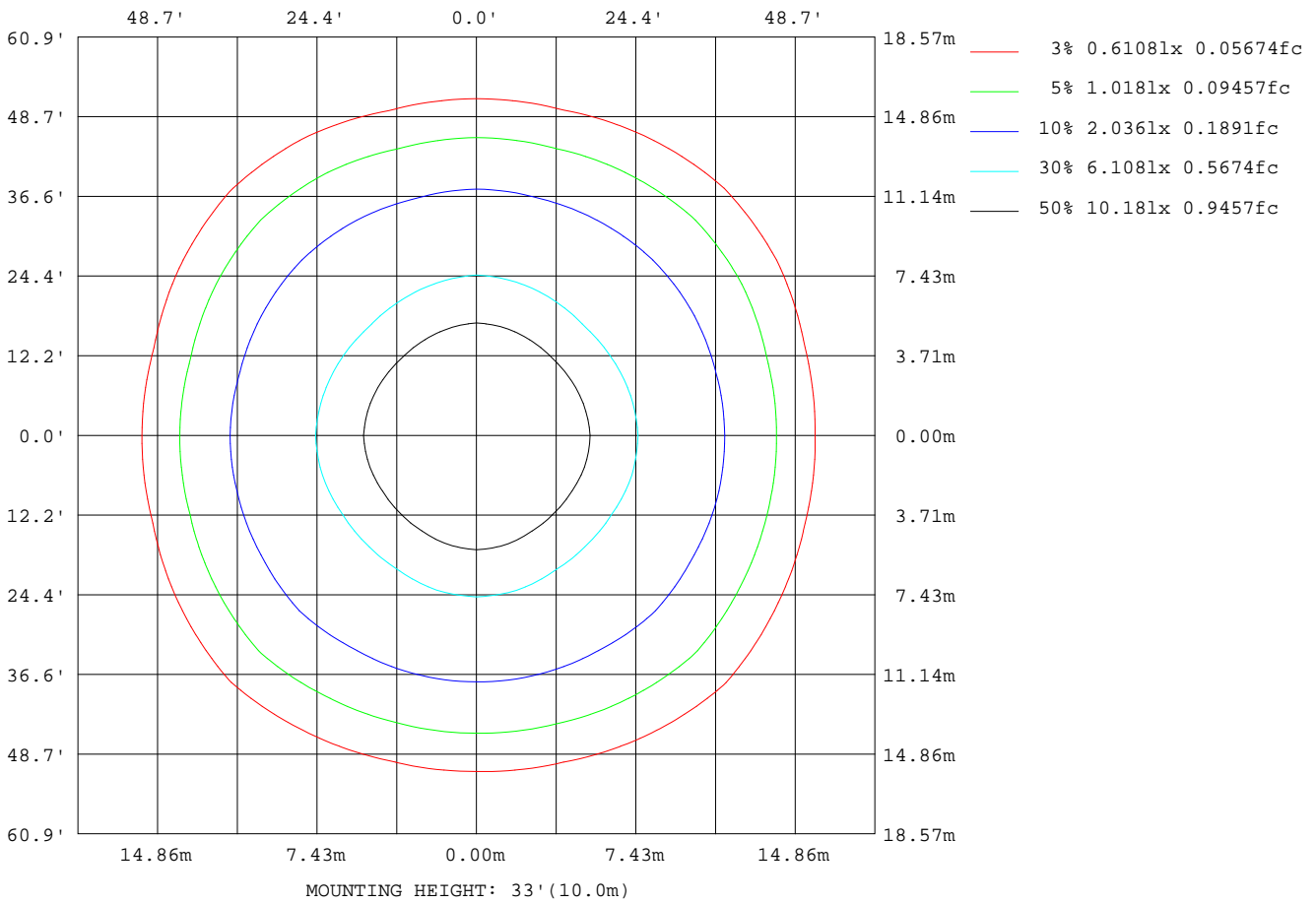
Note:The Curves indicate the illuminated area and the average illumination when the luminaire is at different distance.

C Range: 0 - 360DEG
C Interval: 15.0DEG
Test Speed: HIGH
Temperature:25.3DEG
Operators:Cao Chengpei
Test Date:2014-08-30

γ Range: 0 - 90DEG
γ Interval: 1.0DEG
Test System:EVERFINE GO-2000B_V1 SYSTEM V2.0.288
Humidity:53.0%
Test Distance:5.780m [K=1.0000]
Remarks:

ISOLUX DIAGRAM

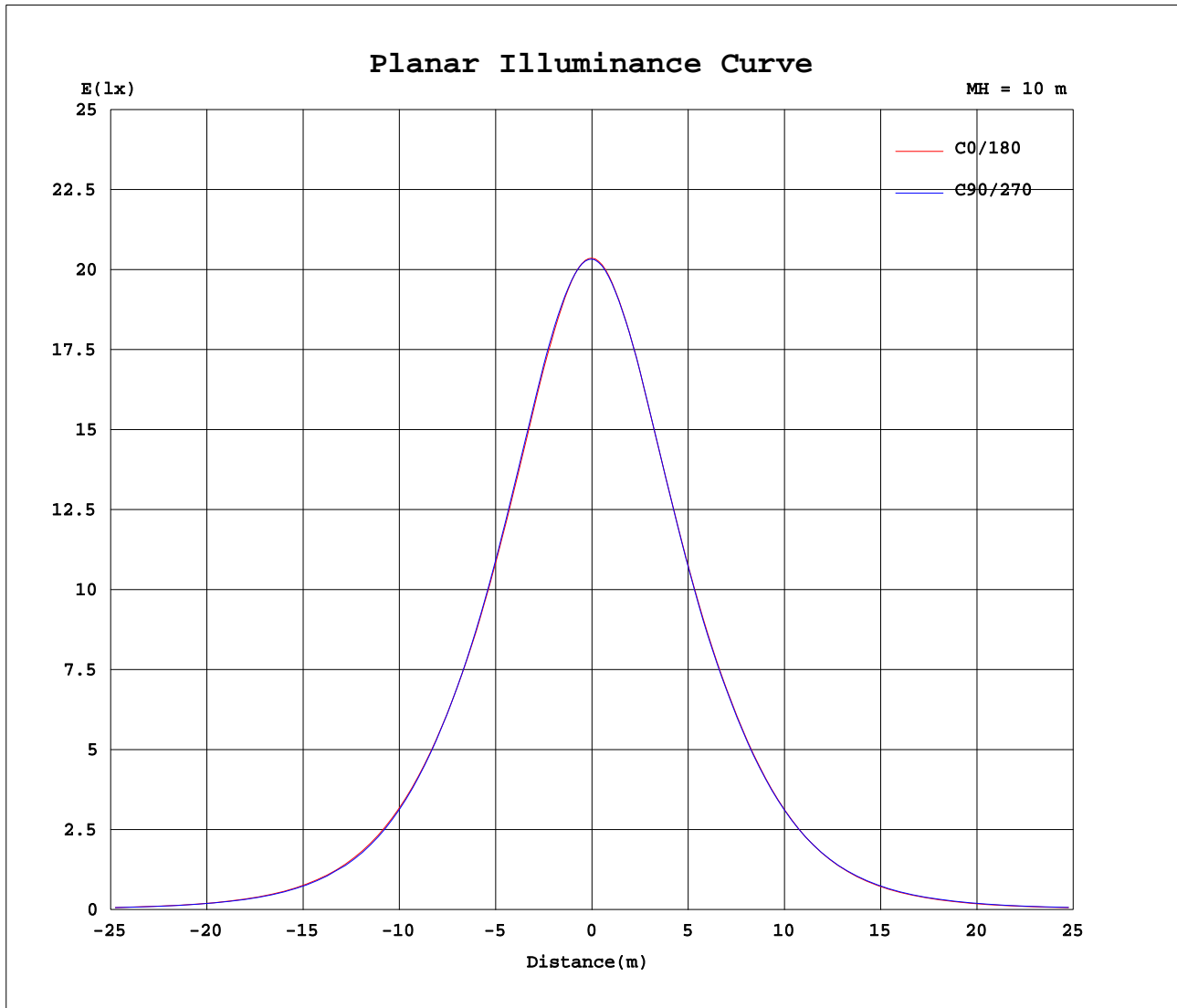
Test:U:220.4V I:0.1555A P:33.89W PF:0.9890 Lamp Flux:3529.27x1 lm		
NAME: CS8R-30S-840	TYPE:Downlight	SERIAL No.:
SPEC.:4000K	DIM.: L230mm*W230mm*H76mm	
MFR.: E-LITE LIGHTING CO.,LTD.		



C Range: 0 - 360DEG
 C Interval: 15.0DEG
 Test Speed: HIGH
 Temperature:25.3DEG
 Operators:Cao Chengpei
 Test Date:2014-08-30

γ Range: 0 - 90DEG
 γ Interval: 1.0DEG
 Test System:EVERFINE GO-2000B_V1 SYSTEM V2.0.288
 Humidity:53.0%
 Test Distance:5.780m [K=1.0000]
 Remarks:

Planar Illuminance Curve



C Range: 0 - 360DEG
 C Interval: 15.0DEG
 Test Speed: HIGH
 Temperature: 25.3DEG
 Operators: Cao Chengpei
 Test Date: 2014-08-30

γ Range: 0 - 90DEG
 γ Interval: 1.0DEG
 Test System: EVERFINE GO-2000B_V1 SYSTEM V2.0.288
 Humidity: 53.0%
 Test Distance: 5.780m [K=1.0000]
 Remarks:

Photometric Data Table [cd]

G/C	0.0	15.0	30.0	45.0	60.0	75.0	90.0	105.0	120.0	135.0
0.0	2036	2035	2035	2034	2034	2033	2033	2032	2032	2032
3.0	2027	2028	2027	2028	2027	2028	2026	2025	2022	2022
6.0	1998	2000	1999	2001	2000	2002	1999	1998	1993	1991
9.0	1951	1954	1952	1955	1956	1961	1959	1956	1947	1942
12.0	1894	1896	1890	1893	1897	1908	1907	1902	1888	1879
15.0	1831	1832	1819	1819	1827	1843	1843	1835	1815	1808
18.0	1754	1753	1739	1739	1746	1763	1767	1756	1731	1726
21.0	1673	1669	1648	1648	1654	1679	1687	1672	1641	1633
24.0	1589	1581	1554	1551	1558	1590	1602	1582	1546	1533
27.0	1502	1490	1459	1447	1460	1496	1513	1489	1449	1432
30.0	1413	1398	1360	1345	1359	1401	1421	1393	1347	1330
33.0	1323	1304	1259	1245	1257	1304	1327	1298	1246	1232
36.0	1230	1214	1163	1147	1157	1209	1230	1204	1149	1135
39.0	1129	1115	1070	1052	1061	1107	1124	1102	1053	1041
42.0	1018	1009	973.5	963.0	963.8	997.6	1009	991.8	956.1	952.1
45.0	899.3	896.7	873.2	876.4	864.0	881.6	885.2	875.7	854.6	865.0
48.0	776.3	779.0	769.9	785.6	760.3	761.7	759.5	755.8	749.5	773.3
51.0	652.2	658.9	664.1	689.5	656.9	642.4	634.5	635.3	643.0	676.0
54.0	532.4	540.9	558.1	589.4	560.9	526.9	517.7	519.4	538.5	574.1
57.0	420.9	428.8	455.5	486.1	452.7	417.8	407.1	410.5	436.5	469.3
60.0	319.8	327.2	354.7	384.1	354.1	319.5	308.7	312.2	338.4	366.6
63.0	233.7	239.7	262.5	287.3	263.6	232.7	225.6	228.1	249.2	270.5
66.0	164.5	167.3	183.2	201.6	184.6	163.2	159.0	159.0	173.1	187.1
69.0	113.8	113.4	120.1	132.1	121.2	111.1	109.6	108.2	113.3	121.0
72.0	79.78	78.35	75.34	78.59	74.91	75.74	76.18	74.52	70.98	71.26
75.0	54.72	54.31	47.40	44.52	45.78	51.71	51.78	51.03	44.20	40.53
78.0	29.47	31.35	26.88	24.30	25.46	29.53	26.84	28.33	24.08	21.90
81.0	5.419	6.415	8.134	11.36	8.350	6.394	5.264	6.134	7.042	9.944
84.0	5.287	6.111	6.837	7.264	6.859	6.074	5.085	5.830	6.552	6.915
87.0	5.191	5.793	6.312	6.578	6.316	5.771	4.977	5.572	6.151	6.319
90.0	0.8381	0.8048	0.7570	0.5698	0.4845	0.3369	0.2995	0.2870	0.2953	0.2974
G/C	150.0	165.0	180.0	195.0	210.0	225.0	240.0	255.0	270.0	285.0
0.0	2032	2032	2036	2035	2035	2034	2034	2033	2033	2032
3.0	2019	2019	2024	2021	2021	2019	2020	2019	2020	2020
6.0	1987	1986	1991	1987	1987	1984	1986	1985	1988	1987
9.0	1937	1938	1943	1938	1936	1931	1934	1935	1942	1940
12.0	1875	1880	1887	1879	1872	1864	1870	1877	1886	1883
15.0	1803	1810	1816	1807	1799	1789	1797	1806	1818	1812
18.0	1720	1728	1739	1726	1714	1706	1715	1724	1740	1732
21.0	1630	1644	1659	1642	1622	1614	1623	1637	1658	1646
24.0	1535	1557	1576	1554	1529	1512	1526	1547	1573	1558
27.0	1437	1467	1489	1464	1433	1409	1426	1455	1485	1465
30.0	1340	1377	1401	1371	1336	1307	1327	1359	1393	1371
33.0	1243	1286	1312	1279	1240	1208	1229	1267	1305	1279
36.0	1147	1194	1220	1184	1145	1111	1135	1173	1214	1185
39.0	1054	1094	1117	1083	1050	1019	1043	1073	1111	1085
42.0	956.5	984.9	1004	974.9	953.7	933.2	948.5	965.5	998.0	975.7
45.0	855.6	870.3	883.6	859.9	854.2	847.3	849.9	853.2	879.6	862.2
48.0	752.2	750.8	757.5	740.8	749.3	757.7	749.8	737.9	756.5	745.0
51.0	646.5	629.7	631.3	619.7	643.9	661.8	648.2	621.6	634.4	627.0
54.0	541.1	512.1	509.7	505.4	537.9	561.9	546.0	512.5	517.6	516.4
57.0	437.3	401.8	398.1	396.3	433.2	463.0	444.4	408.0	409.6	410.3
60.0	336.7	303.2	300.4	298.5	334.4	361.5	347.8	312.1	313.7	313.8
63.0	246.4	218.8	218.4	216.4	245.9	267.8	259.6	229.4	231.7	231.4
66.0	169.8	151.3	154.2	171.1	186.2	183.0	161.3	161.3	165.1	163.5
69.0	109.7	103.1	107.6	103.8	112.9	120.5	121.7	110.8	115.7	112.8
72.0	67.85	71.34	75.91	72.61	72.02	72.40	75.39	76.18	81.12	78.49
75.0	42.05	48.65	51.41	49.84	45.57	41.70	46.12	52.01	55.24	54.10
78.0	22.83	26.30	25.96	26.80	25.22	22.68	25.37	28.91	29.12	30.33
81.0	7.161	6.119	5.007	6.022	7.083	10.21	8.112	6.565	5.537	6.589
84.0	6.561	5.807	4.868	5.714	6.557	7.081	6.840	6.231	5.386	6.267
87.0	6.010	5.504	4.819	5.427	6.059	6.504	6.329	5.899	5.292	6.007
90.0	0.2932	0.2849	0.2184	0.2246	0.2308	0.2412	0.2371	0.2329	0.2371	0.3431
G/C	300.0	315.0	330.0	345.0						
0.0	2032	2032	2032	2032						
3.0	2021	2021	2022	2023						
6.0	1989	1989	1992	1993						
9.0	1941	1938	1943	1945						
12.0	1880	1873	1879	1885						
15.0	1808	1798	1807	1820						
18.0	1722	1717	1729	1739						
21.0	1631	1626	1638	1653						

C Range: 0 - 360DEG
 C Interval: 15.0DEG
 Test Speed: HIGH
 Temperature: 25.3DEG
 Operators: Cao Chengpei
 Test Date: 2014-08-30

γ Range: 0 - 90DEG
 γ Interval: 1.0DEG
 Test System: EVERFINE GO-2000B_V1 SYSTEM V2.0.288
 Humidity: 53.0%
 Test Distance: 5.780m [K=1.0000]
 Remarks:

Photometric Data Table [cd]

24.0	1536	1525	1543	1564
27.0	1441	1421	1443	1474
30.0	1342	1319	1344	1382
33.0	1245	1218	1248	1288
36.0	1151	1121	1151	1196
39.0	1056	1029	1059	1098
42.0	959.3	942.6	965.2	993.2
45.0	859.0	857.6	869.2	881.9
48.0	755.2	768.5	770.1	767.3
51.0	650.2	674.2	670.5	650.0
54.0	546.3	575.7	568.4	536.2
57.0	444.8	478.0	465.2	428.1
60.0	348.8	377.4	365.7	326.5
63.0	261.0	283.4	273.4	238.6
66.0	185.2	199.7	192.6	167.1
69.0	124.9	130.8	127.8	113.4
72.0	79.52	79.29	79.00	77.68
75.0	50.15	45.58	48.60	53.59
78.0	28.44	25.05	27.58	31.17
81.0	8.553	11.63	9.917	6.644
84.0	7.119	7.557	7.164	6.267
87.0	6.687	6.898	6.556	5.916
90.0	0.5677	0.8443	1.092	1.354

C Range: 0 - 360DEG
 C Interval: 15.0DEG
 Test Speed: HIGH
 Temperature: 25.3DEG
 Operators: Cao Chengpei
 Test Date: 2014-08-30

γ Range: 0 - 90DEG
 γ Interval: 1.0DEG
 Test System: EVERFINE GO-2000B_V1 SYSTEM V2.0.288
 Humidity: 53.0%
 Test Distance: 5.780m [K=1.0000]
 Remarks: