

LED Downlight CATO Series CS8F-30S-840



Light Output Ratio:	100.0%	
Luminaire Power:	33.85 W	
SHR Nominal:	1.25	Calculated using the TM5
SHR Maximum:	1.25	fine grid method.

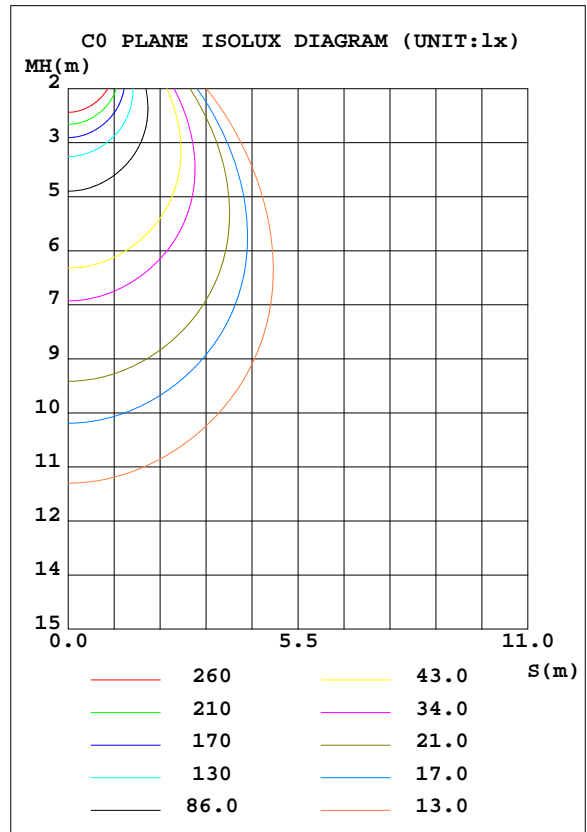
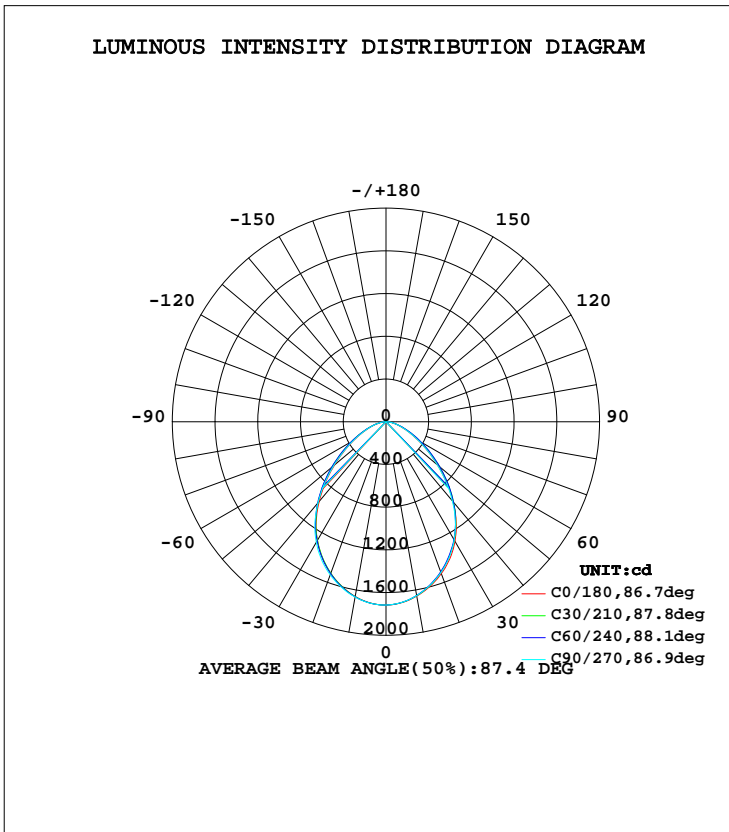
C Range: 0 - 360DEG  
 C Interval: 15.0DEG  
 Test Speed: HIGH  
 Temperature: 25.3DEG  
 Operators: Cao Chengpei  
 Test Date: 2014-08-30

γ Range: 0 - 90DEG  
 γ Interval: 1.0DEG  
 Test System: EVERFINE GO-2000B\_V1 SYSTEM V2.0.288  
 Humidity: 53.0%  
 Test Distance: 5.780m [K=1.0000]  
 Remarks:

LUMINAIRE PHOTOMETRIC TEST REPORT

Test:U:220.3V I:0.1553A P:33.85W PF:0.9889 Lamp Flux:3458.84x1 lm		
NAME: CS8F-30S-840	TYPE:Downlight	SERIAL No.:
SPEC.:4000K	DIM.: L230mm*W230mm*H76mm	
MFR.: E-LITE LIGHTING CO.,LTD.		

DATA OF LAMP		PHOTOMETRIC DATA Eff: 102.19 lm/W			
MODEL	SAMSUNG-4000K	Imax(cd)	1717	S/MH(C0/180)	1.13
NOMINAL POWER(W)	36	LOR(%)	100.0	S/MH(C90/270)	1.15
RATED VOLTAGE(V)	220	TOTAL FLUX(lm)	3458.8	η UP, DN(C0-180)	0.0, 49.8
NOMINAL FLUX(lm)	3458.84	CIE CLASS	DIRECT	η UP, DN(C180-360)	0.0, 50.2
LAMPS INSIDE	1	η up(%)	0.0	CIBSE SHR NOM	1.25
TEST VOLTAGE(V)	220	η down(%)	100.0	CIBSE SHR MAX	1.25



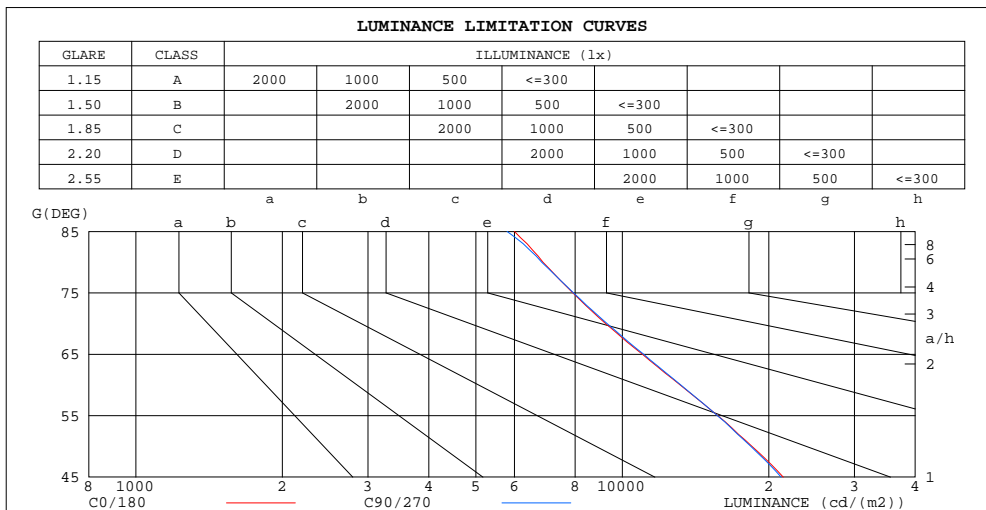
C Range: 0 - 360DEG  
 C Interval: 15.0DEG  
 Test Speed: HIGH  
 Temperature:25.3DEG  
 Operators:Cao Chengpei  
 Test Date:2014-08-30

γ Range: 0 - 90DEG  
 γ Interval: 1.0DEG  
 Test System:EVERFINE GO-2000B\_V1 SYSTEM V2.0.288  
 Humidity:53.0%  
 Test Distance:5.780m [K=1.0000]  
 Remarks:

**ZONAL FLUX DIAGRAM  
AND LUMINANCE LIMITATION CURVES**

**ZONAL FLUX DIAGRAM:**

$\gamma$	C0	C45	C90	C135	C180	C225	C270	C315	$\gamma$	$\Phi$ zone	$\Phi$ total	$\Phi$ lum,lamp
10	1658	1654	1653	1655	1662	1662	1667	1661	0- 10	161.0	161.0	4.66,4.66
20	1514	1498	1503	1496	1512	1508	1527	1511	10- 20	448.5	609.5	17.6,17.6
30	1293	1278	1278	1271	1285	1280	1305	1291	20- 30	646.0	1256	36.3,36.3
40	978.5	997.2	967.0	985.7	973.9	991.3	991.0	1006	30- 40	713.1	1969	56.9,56.9
50	628.3	676.1	624.7	665.2	629.3	667.1	638.5	679.4	40- 50	629.1	2598	75.1,75.1
60	347.7	388.5	348.9	380.7	348.0	381.6	351.9	388.8	50- 60	447.1	3045	88,88
70	167.3	188.1	168.3	182.9	166.1	182.1	168.8	186.6	60- 70	260.1	3305	95.5,95.5
80	63.11	69.92	62.72	66.02	60.58	65.58	63.46	68.95	70- 80	121.7	3427	99.1,99.1
90	2.026	1.092	0.4430	0.4721	0.3972	0.4222	0.6197	2.142	80- 90	32.23	3459	100,100
100									90-100			
110									100-110			
120									110-120			
130									120-130			
140									130-140			
150									140-150			
160									150-160			
170									160-170			
180									170-180			
DEG	LUMINOUS INTENSITY:cd									UNIT:lm		



LUMINANCE cd/(m2)		
G(DEG)	C0/180	C90/270
85	6000	5798
80	6870	6828
75	7912	7940
70	9246	9304
65	10991	11058
60	13147	13191
55	15711	15688
50	18478	18373
45	21416	21204

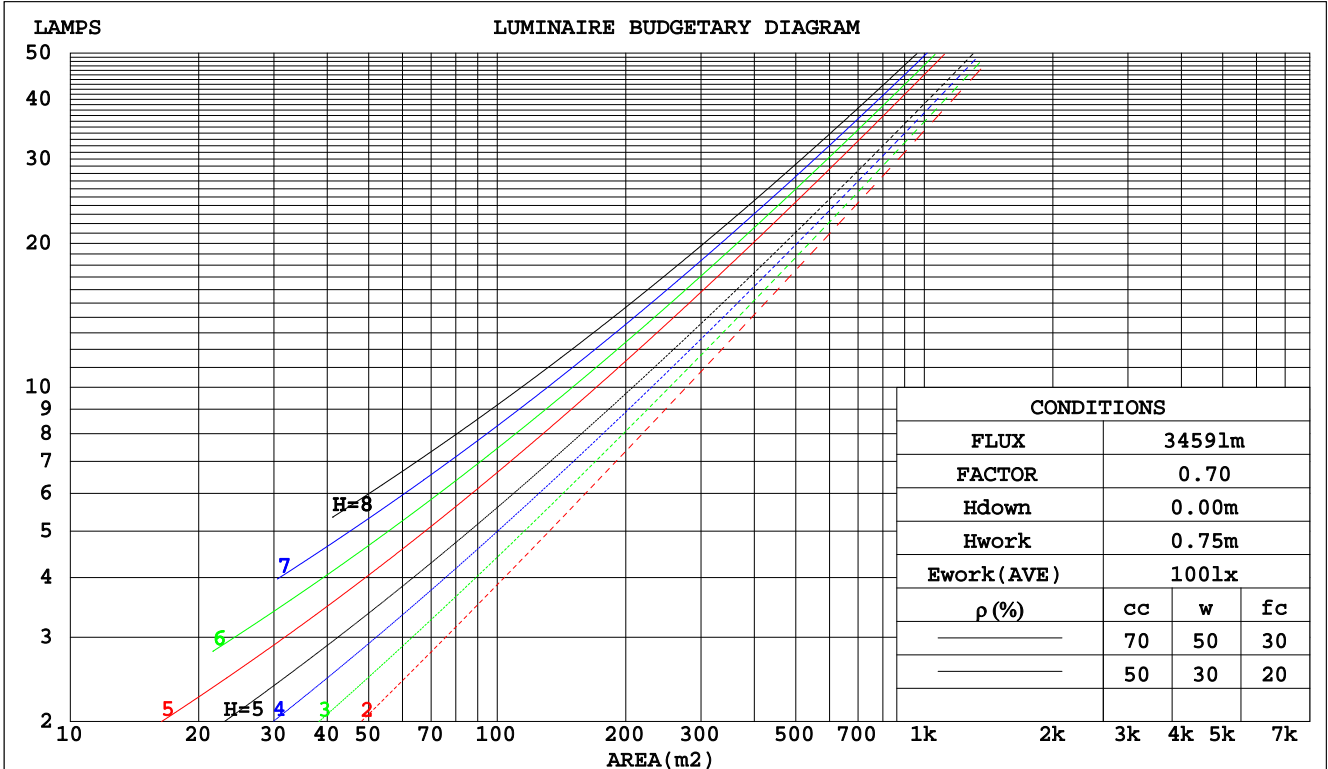
C Range: 0 - 360DEG  
 C Interval: 15.0DEG  
 Test Speed: HIGH  
 Temperature:25.3DEG  
 Operators:Cao Chengpei  
 Test Date:2014-08-30

$\gamma$  Range: 0 - 90DEG  
 $\gamma$  Interval: 1.0DEG  
 Test System:EVERFINE GO-2000B\_V1 SYSTEM V2.0.288  
 Humidity:53.0%  
 Test Distance:5.780m [K=1.0000]  
 Remarks:

CU AND LUMINAIRE BUDGETARY ESTIMATE DIAGRAM

Test:U:220.3V I:0.1553A P:33.85W PF:0.9889 Lamp Flux:3458.84x1 lm		
NAME: CS8F-30S-840	TYPE:Downlight	SERIAL No.:
SPEC.:4000K	DIM.: L230mm*W230mm*H76mm	
MFR.: E-LITE LIGHTING CO.,LTD.		

pcc	80%			70%			50%			30%			10%			0
	50%	30%	10%	50%	30%	10%	50%	30%	10%	50%	30%	10%	50%	30%	10%	0
pw																0
pfc																0
RCR	RCR:Room Cavity Ratio      Coefficients of Utilization(CU)															
0.0	1.19	1.19	1.19	1.16	1.16	1.16	1.11	1.11	1.11	1.06	1.06	1.06	1.02	1.02	1.02	1.00
1.0	1.06	1.03	.99	1.04	1.01	.98	.90	.97	.95	.96	.94	.92	.93	.91	.89	.87
2.0	.95	.89	.84	.93	.87	.83	.89	.85	.81	.86	.82	.79	.83	.80	.77	.75
3.0	.85	.77	.72	.83	.76	.71	.80	.75	.70	.78	.73	.69	.75	.71	.68	.65
4.0	.76	.68	.62	.75	.67	.62	.72	.66	.61	.70	.65	.60	.68	.63	.59	.57
5.0	.69	.61	.55	.68	.60	.54	.66	.59	.54	.64	.58	.53	.62	.57	.53	.51
6.0	.63	.54	.48	.62	.54	.48	.60	.53	.48	.58	.52	.47	.57	.51	.47	.45
7.0	.57	.49	.43	.56	.49	.43	.55	.48	.43	.54	.47	.43	.52	.47	.42	.41
8.0	.53	.45	.39	.52	.44	.39	.51	.44	.39	.49	.43	.39	.48	.43	.38	.37
9.0	.48	.41	.36	.48	.41	.36	.47	.40	.35	.46	.40	.35	.45	.39	.35	.33
10.0	.45	.38	.33	.44	.37	.33	.43	.37	.32	.43	.37	.32	.42	.36	.32	.30



C Range: 0 - 360DEG  
 C Interval: 15.0DEG  
 Test Speed: HIGH  
 Temperature:25.3DEG  
 Operators:Cao Chengpei  
 Test Date:2014-08-30

γ Range: 0 - 90DEG  
 γ Interval: 1.0DEG  
 Test System:EVERFINE GO-2000B\_V1 SYSTEM V2.0.288  
 Humidity:53.0%  
 Test Distance:5.780m [K=1.0000]  
 Remarks:

WEC AND CCEC

Test:U:220.3V I:0.1553A P:33.85W PF:0.9889 Lamp Flux:3458.84x1 lm		
NAME: CS8F-30S-840	TYPE:Downlight	SERIAL No.:
SPEC.:4000K	DIM.: L230mm*W230mm*H76mm	
MFR.: E-LITE LIGHTING CO.,LTD.		

ρcc	80%			70%			50%			30%			10%			0
ρw	50%	30%	10%	50%	30%	10%	50%	30%	10%	50%	30%	10%	50%	30%	10%	0
ρfc	20%			20%			20%			20%			20%			0
RCR	RCR:Room Cavity Ratio						Wall Exitance Coefficients(WEC)									
0.0																
1.0	.262	.149	.047	.255	.146	.046	.242	.139	.044	.230	.133	.043	.219	.127	.041	
2.0	.251	.138	.042	.245	.135	.042	.234	.130	.040	.223	.125	.039	.214	.121	.038	
3.0	.236	.126	.038	.231	.124	.037	.221	.120	.036	.212	.116	.036	.203	.113	.035	
4.0	.221	.115	.034	.217	.113	.034	.208	.110	.033	.200	.107	.032	.192	.104	.032	
5.0	.207	.106	.031	.203	.104	.030	.195	.102	.030	.188	.099	.030	.181	.097	.029	
6.0	.194	.097	.028	.190	.096	.028	.184	.094	.027	.177	.092	.027	.171	.090	.027	
7.0	.182	.090	.026	.179	.089	.025	.173	.087	.025	.167	.086	.025	.162	.084	.025	
8.0	.172	.084	.024	.169	.083	.023	.163	.082	.023	.158	.080	.023	.153	.079	.023	
9.0	.162	.078	.022	.159	.078	.022	.154	.076	.022	.150	.075	.021	.145	.074	.021	
10.0	.153	.073	.020	.151	.073	.020	.146	.072	.020	.142	.071	.020	.138	.069	.020	

ρcc	80%			70%			50%			30%			10%			0
ρw	50%	30%	10%	50%	30%	10%	50%	30%	10%	50%	30%	10%	50%	30%	10%	0
ρfc	20%			20%			20%			20%			20%			0
RCR	RCR:Room Cavity Ratio						Ceiling Cavity Exitance Coefficients(CCEC)									
0.0	.190	.190	.190	.163	.163	.163	.111	.111	.111	.064	.064	.064	.020	.020	.020	
1.0	.177	.157	.138	.151	.134	.119	.104	.092	.082	.060	.053	.048	.019	.017	.015	
2.0	.167	.132	.103	.143	.114	.089	.098	.079	.062	.056	.046	.036	.018	.015	.012	
3.0	.158	.114	.079	.135	.098	.069	.093	.068	.048	.054	.040	.028	.017	.013	.009	
4.0	.150	.100	.062	.129	.087	.054	.089	.060	.038	.051	.035	.023	.016	.012	.007	
5.0	.143	.090	.051	.122	.078	.044	.084	.054	.031	.049	.032	.018	.016	.010	.006	
6.0	.136	.081	.042	.117	.070	.037	.080	.049	.026	.047	.029	.015	.015	.009	.005	
7.0	.129	.074	.035	.111	.064	.031	.077	.045	.022	.045	.027	.013	.014	.009	.004	
8.0	.123	.068	.030	.106	.059	.027	.073	.042	.019	.043	.025	.011	.014	.008	.004	
9.0	.117	.063	.027	.101	.055	.023	.070	.039	.016	.041	.023	.010	.013	.007	.003	
10.0	.112	.059	.024	.097	.051	.021	.067	.036	.015	.039	.021	.009	.013	.007	.003	

C Range: 0 - 360DEG  
 C Interval: 15.0DEG  
 Test Speed: HIGH  
 Temperature:25.3DEG  
 Operators:Cao Chengpei  
 Test Date:2014-08-30

γ Range: 0 - 90DEG  
 γ Interval: 1.0DEG  
 Test System:EVERFINE GO-2000B\_V1 SYSTEM V2.0.288  
 Humidity:53.0%  
 Test Distance:5.780m [K=1.0000]  
 Remarks:

UGR(Unified Glare Rating) Table

Test:U:220.3V I:0.1553A P:33.85W PF:0.9889 Lamp Flux:3458.84x1 lm		
NAME: CS8F-30S-840	TYPE:Downlight	SERIAL No.:
SPEC.:4000K	DIM.: L230mm*W230mm*H76mm	
MFR.: E-LITE LIGHTING CO.,LTD.		

ceiling/cavity	0.7	0.7	0.5	0.5	0.3	0.7	0.7	0.5	0.5	0.3
walls	0.5	0.3	0.5	0.3	0.3	0.5	0.3	0.5	0.3	0.3
working plane	0.2	0.2	0.2	0.2	0.2	0.2	0.2	0.2	0.2	0.2
Room dimensions	Viewed crosswise					Viewed endwise				
x = 2H y = 2H	21.9	23.3	22.2	23.5	23.7	22.0	23.3	22.2	23.5	23.7
3H	22.6	23.9	22.9	24.1	24.3	22.7	23.9	23.0	24.1	24.4
4H	22.9	24.1	23.2	24.3	24.5	22.9	24.1	23.2	24.3	24.6
6H	23.0	24.1	23.3	24.4	24.7	23.1	24.2	23.4	24.4	24.7
8H	23.1	24.1	23.4	24.4	24.7	23.1	24.2	23.4	24.5	24.7
12H	23.1	24.1	23.4	24.4	24.7	23.1	24.2	23.5	24.4	24.7
4H 2H	22.3	23.5	22.6	23.7	24.0	22.3	23.5	22.6	23.8	24.0
3H	23.2	24.2	23.5	24.5	24.8	23.2	24.2	23.5	24.5	24.8
4H	23.5	24.4	23.9	24.7	25.1	23.5	24.5	23.9	24.8	25.1
6H	23.8	24.6	24.1	24.9	25.3	23.8	24.6	24.2	25.0	25.3
8H	23.8	24.6	24.2	25.0	25.4	23.9	24.7	24.3	25.0	25.4
12H	23.9	24.6	24.3	25.0	25.4	23.9	24.6	24.4	25.0	25.4
8H 4H	23.6	24.4	24.0	24.8	25.1	23.7	24.4	24.1	24.8	25.2
6H	24.0	24.6	24.4	25.0	25.4	24.0	24.7	24.5	25.1	25.5
8H	24.1	24.7	24.6	25.1	25.6	24.2	24.7	24.6	25.2	25.6
12H	24.2	24.7	24.7	25.2	25.6	24.3	24.8	24.8	25.2	25.7
12H 4H	23.6	24.3	24.0	24.7	25.1	23.7	24.4	24.1	24.7	25.1
6H	24.0	24.6	24.5	25.0	25.4	24.1	24.6	24.5	25.0	25.5
8H	24.2	24.7	24.7	25.1	25.6	24.2	24.7	24.7	25.2	25.6
Variations with the observer position at spacings:										
S = 1.0H	+ 0.4 / - 0.5					+ 0.4 / - 0.5				
1.5H	+ 0.2 / - 0.3					+ 0.2 / - 0.3				
2.0H	+ 0.7 / - 0.8					+ 0.7 / - 0.8				

CIE Pub.117 Corrected 3459 lm Total Lamp Luminous Flux.(8log(F/F0) = 4.3)

C Range: 0 - 360DEG  
 C Interval: 15.0DEG  
 Test Speed: HIGH  
 Temperature:25.3DEG  
 Operators:Cao Chengpei  
 Test Date:2014-08-30

γ Range: 0 - 90DEG  
 γ Interval: 1.0DEG  
 Test System:EVERFINE GO-2000B\_V1 SYSTEM V2.0.288  
 Humidity:53.0%  
 Test Distance:5.780m [K=1.0000]  
 Remarks:

UTILIZATION FACTORS TABLE

Test:U:220.3V I:0.1553A P:33.85W PF:0.9889 Lamp Flux:3458.84x1 lm		
NAME: CS8F-30S-840	TYPE:Downlight	SERIAL No.:
SPEC.:4000K	DIM.: L230mm*W230mm*H76mm	
MFR.: E-LITE LIGHTING CO.,LTD.		

REFLECTANCE										
Ceiling	0.8	0.8	0.8	0.7	0.7	0.7	0.5	0.5	0.5	0
Walls	0.7	0.5	0.3	0.7	0.5	0.3	0.7	0.5	0.3	0
Working plane	0.2	0.2	0.2	0.2	0.2	0.2	0.2	0.2	0.2	0
ROOM INDEX	UTILIZATION FACTORS(PERCENT) $k(RI) \times RCR = 5$									
k = 0.60	65	54	48	64	54	48	63	53	48	42
0.80	75	64	58	74	64	58	72	63	57	51
1.00	83	73	67	81	72	66	79	73	66	60
1.25	89	80	74	88	80	74	85	78	73	67
1.50	94	85	79	92	84	79	89	83	78	71
2.00	99	92	87	98	91	86	94	89	85	78
2.50	103	96	91	101	95	90	97	92	88	81
3.00	105	100	95	103	98	94	100	95	92	84
4.00	109	104	100	106	102	99	102	99	96	88
5.00	111	107	103	108	105	102	104	101	99	90
ROOM INDEX	UF(total)									Direct
According to DIN EN 13032-2 2004			Suspended				SHRNOM = 1.25			

C Range: 0 - 360DEG  
 C Interval: 15.0DEG  
 Test Speed: HIGH  
 Temperature:25.3DEG  
 Operators:Cao Chengpei  
 Test Date:2014-08-30

$\gamma$  Range: 0 - 90DEG  
 $\gamma$  Interval: 1.0DEG  
 Test System:EVERFINE GO-2000B\_V1 SYSTEM V2.0.288  
 Humidity:53.0%  
 Test Distance:5.780m [K=1.0000]  
 Remarks:

ISOCANDELA DIAGRAM

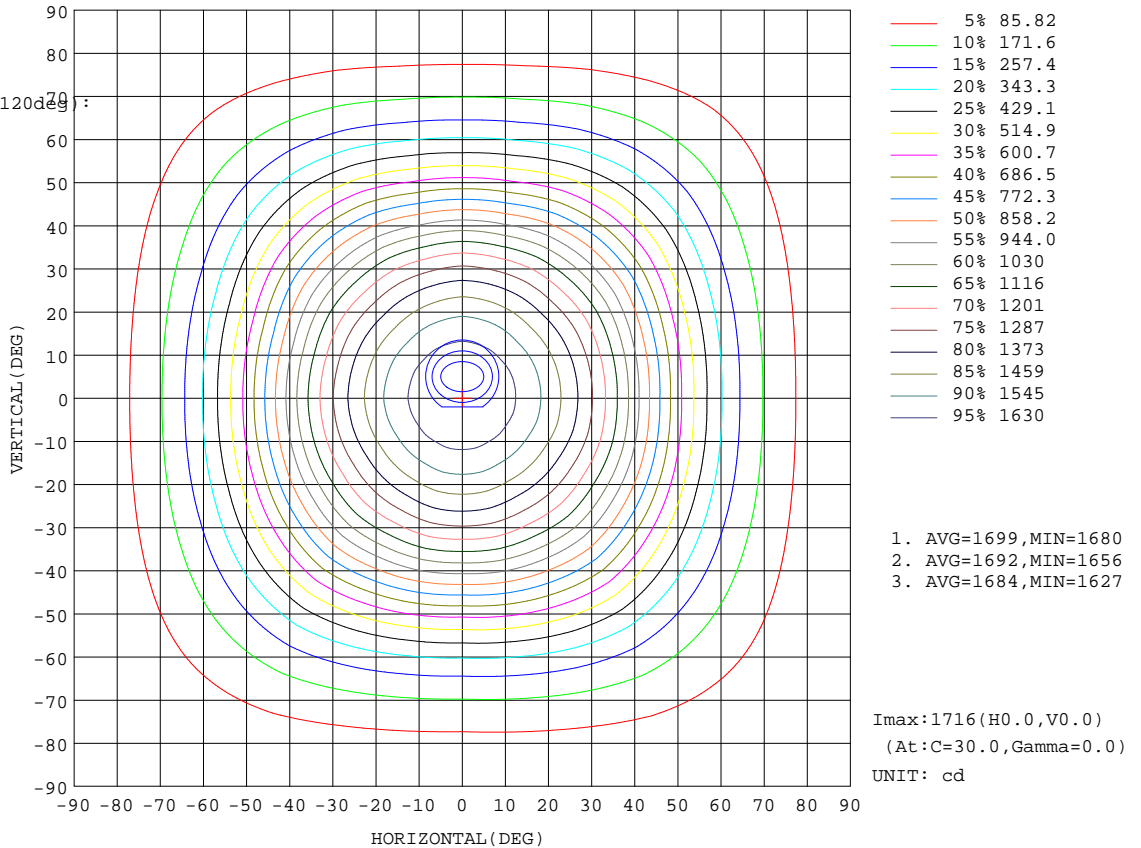
Test:U:220.3V I:0.1553A P:33.85W PF:0.9889 Lamp Flux:3458.84x1 lm		
NAME: CS8F-30S-840	TYPE:Downlight	SERIAL No.:
SPEC.:4000K	DIM.: L230mm*W230mm*H76mm	
MFR.: E-LITE LIGHTING CO.,LTD.		

Conical surface Flux(90deg):

2302.1 lm  
 %lum = 66.6%  
 %lamp = 66.6%

Conical surface Flux(120deg):

3044.8 lm  
 %lum = 88.0%  
 %lamp = 88.0%



C Range: 0 - 360DEG  
 C Interval: 15.0DEG  
 Test Speed: HIGH  
 Temperature:25.3DEG  
 Operators:Cao Chengpei  
 Test Date:2014-08-30

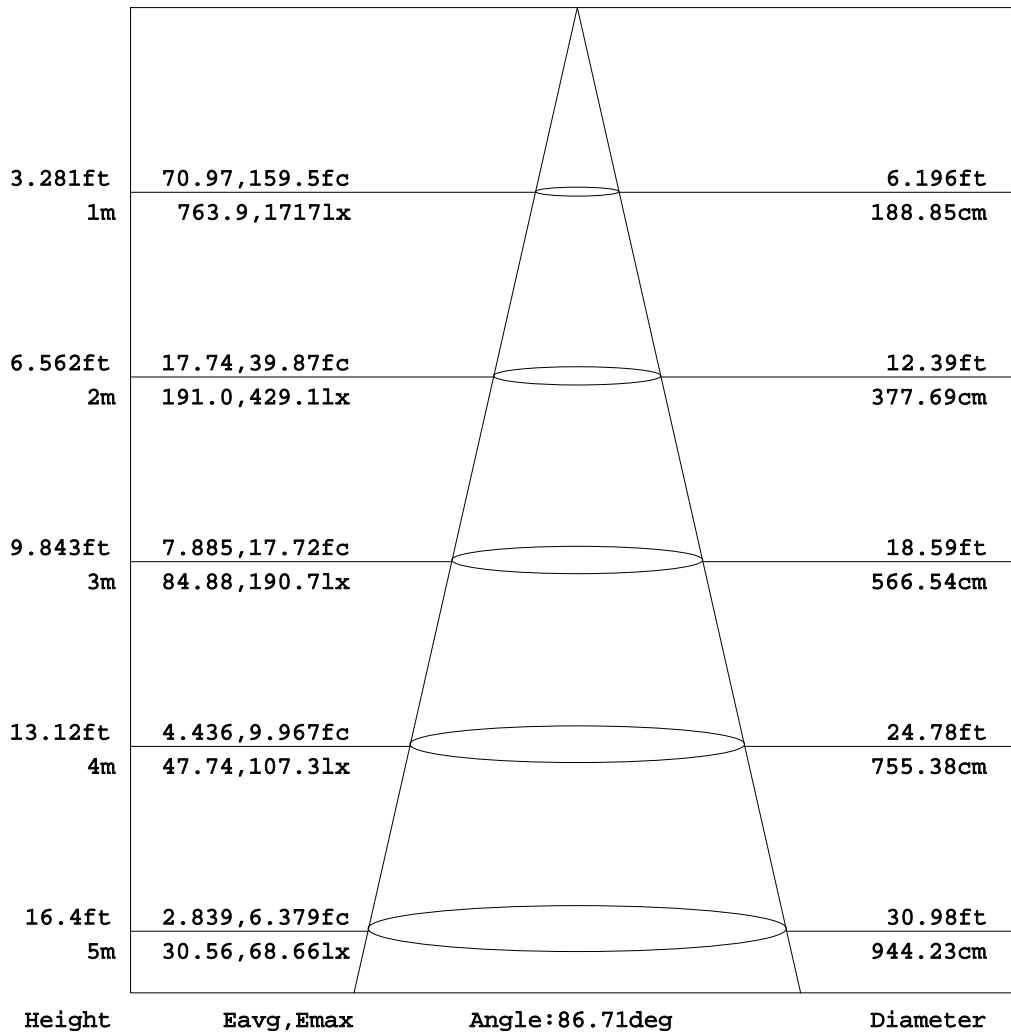
γ Range: 0 - 90DEG  
 γ Interval: 1.0DEG  
 Test System:EVERFINE GO-2000B\_V1 SYSTEM V2.0.288  
 Humidity:53.0%  
 Test Distance:5.780m [K=1.0000]  
 Remarks:



AAI Figure

Test:U:220.3V I:0.1553A P:33.85W PF:0.9889 Lamp Flux:3458.84x1 lm		
NAME: CS8F-30S-840	TYPE:Downlight	SERIAL No.:
SPEC.:4000K	DIM.: L230mm*W230mm*H76mm	
MFR.: E-LITE LIGHTING CO.,LTD.		

Flux out:2238 lm



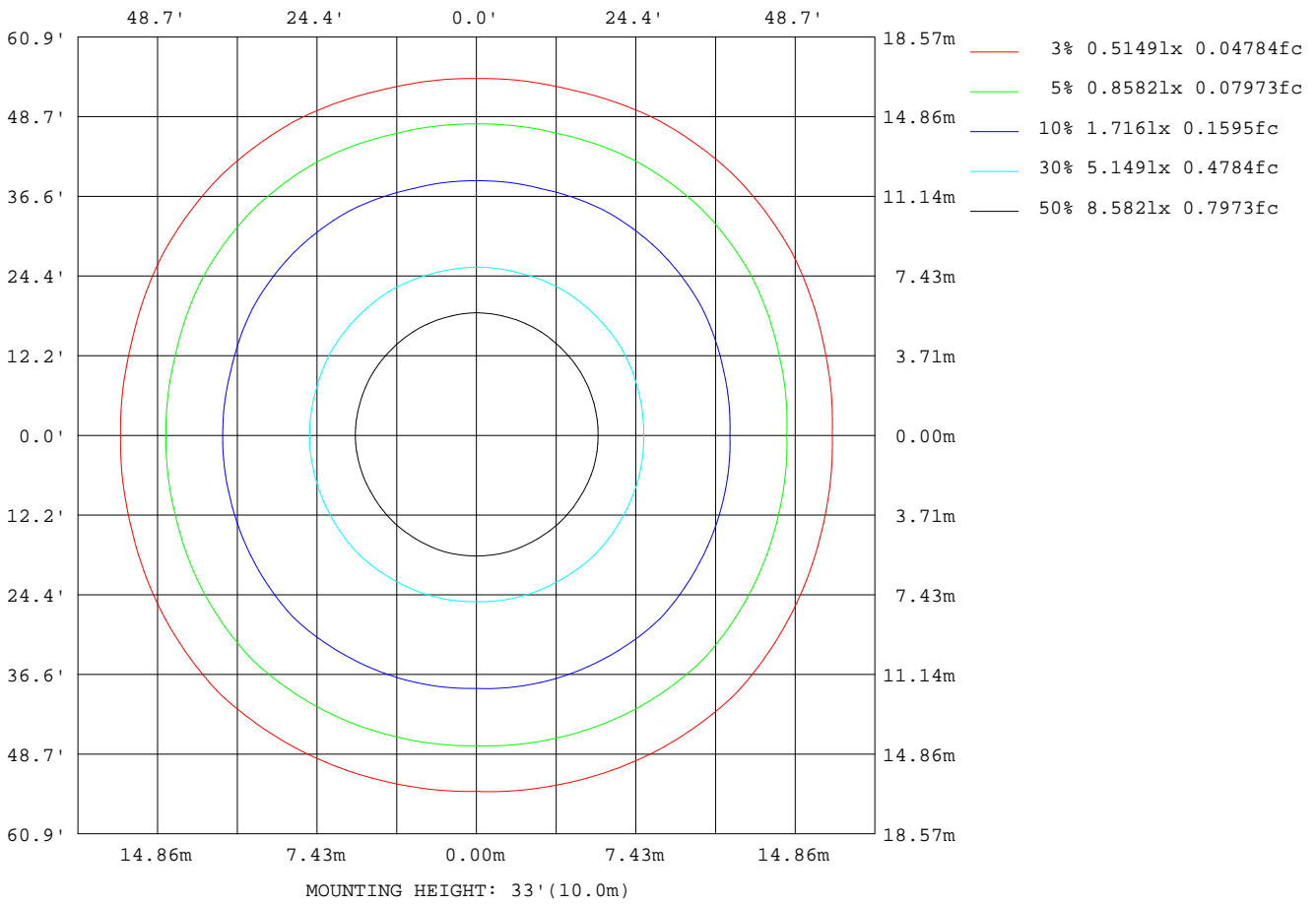
Note:The Curves indicate the illuminated area and the average illumination when the luminaire is at different distance.

C Range: 0 - 360DEG  
C Interval: 15.0DEG  
Test Speed: HIGH  
Temperature:25.3DEG  
Operators:Cao Chengpei  
Test Date:2014-08-30

γ Range: 0 - 90DEG  
γ Interval: 1.0DEG  
Test System:EVERFINE GO-2000B\_V1 SYSTEM V2.0.288  
Humidity:53.0%  
Test Distance:5.780m [K=1.0000]  
Remarks:

ISOLUX DIAGRAM

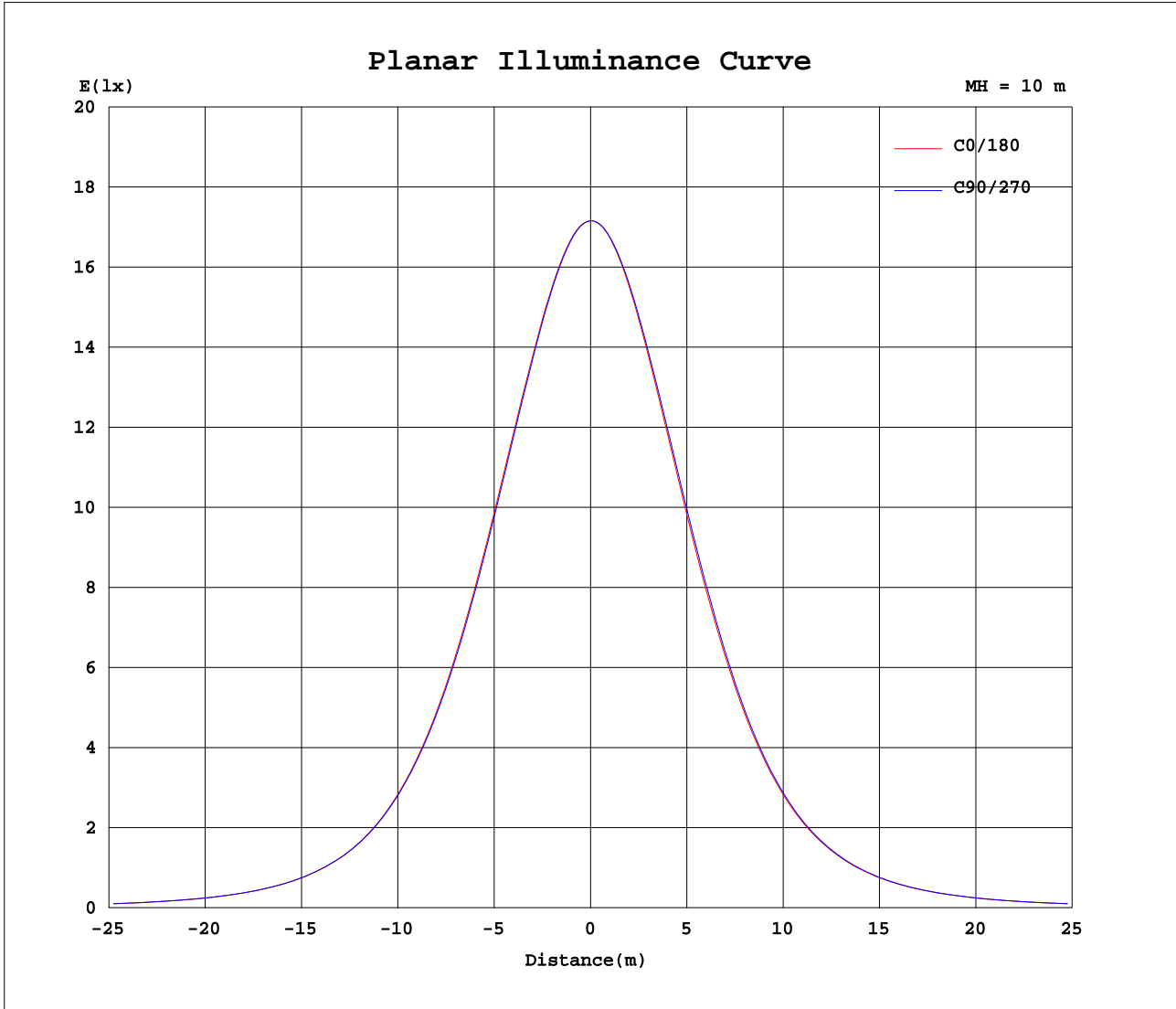
Test:U:220.3V I:0.1553A P:33.85W PF:0.9889 Lamp Flux:3458.84x1 lm		
NAME: CS8F-30S-840	TYPE:Downlight	SERIAL No.:
SPEC.:4000K	DIM.: L230mm*W230mm*H76mm	
MFR.: E-LITE LIGHTING CO.,LTD.		



C Range: 0 - 360DEG  
 C Interval: 15.0DEG  
 Test Speed: HIGH  
 Temperature:25.3DEG  
 Operators:Cao Chengpei  
 Test Date:2014-08-30

γ Range: 0 - 90DEG  
 γ Interval: 1.0DEG  
 Test System:EVERFINE GO-2000B\_V1 SYSTEM V2.0.288  
 Humidity:53.0%  
 Test Distance:5.780m [K=1.0000]  
 Remarks:

Planar Illuminance Curve



C Range: 0 - 360DEG  
 C Interval: 15.0DEG  
 Test Speed: HIGH  
 Temperature: 25.3DEG  
 Operators: Cao Chengpei  
 Test Date: 2014-08-30

$\gamma$  Range: 0 - 90DEG  
 $\gamma$  Interval: 1.0DEG  
 Test System: EVERFINE GO-2000B\_V1 SYSTEM V2.0.288  
 Humidity: 53.0%  
 Test Distance: 5.780m [K=1.0000]  
 Remarks:

LUMINOUS DISTRIBUTION INTENSITY DATA

Test:U:220.3V I:0.1553A P:33.85W PF:0.9889 Lamp Flux:3458.84x1 lm		
NAME: CS8F-30S-840	TYPE:Downlight	SERIAL No.:
SPEC.:4000K	DIM.: L230mm*W230mm*H76mm	
MFR.: E-LITE LIGHTING CO.,LTD.		

Table--1

UNIT: cd

C(DEG) γ (DEG)	0	15	30	45	60	75	90	105	120	135	150	165	180	195	210	225	240	255	270
0	1716	1716	1717	1716	1716	1716	1716	1716	1716	1716	1716	1716	1716	1716	1717	1716	1716	1716	1716
5	1700	1700	1699	1699	1698	1699	1698	1699	1698	1700	1699	1701	1703	1703	1704	1704	1705	1704	1705
10	1658	1658	1654	1654	1652	1654	1653	1655	1653	1655	1655	1658	1662	1661	1663	1662	1665	1665	1667
15	1595	1594	1587	1586	1584	1587	1587	1588	1584	1585	1586	1592	1597	1595	1597	1595	1601	1602	1606
20	1514	1511	1502	1498	1496	1502	1503	1503	1496	1496	1497	1505	1512	1510	1510	1508	1515	1520	1527
25	1415	1411	1399	1395	1392	1400	1401	1401	1391	1390	1390	1400	1409	1406	1405	1402	1411	1418	1427
30	1293	1291	1279	1278	1273	1280	1278	1279	1269	1271	1267	1278	1285	1280	1284	1280	1290	1294	1305
35	1146	1150	1141	1146	1136	1140	1132	1138	1129	1136	1127	1134	1140	1135	1146	1144	1153	1149	1160
40	979	986	986	997	983	980	967	975	975	986	972	971	974	971	990	991	997	984	991
45	801	812	820	838	821	810	793	804	810	826	809	800	799	799	825	830	831	809	813
50	628	642	655	676	659	643	625	636	647	665	647	633	629	631	660	667	665	639	638
55	477	487	505	523	510	491	476	484	499	514	499	481	477	482	506	517	511	487	483
60	348	357	373	388	378	362	349	356	368	381	368	353	348	352	373	382	376	356	352
65	246	253	265	277	269	257	247	252	261	270	261	249	245	248	264	270	266	252	248
70	167	172	180	188	183	175	168	172	177	183	176	169	166	168	178	182	180	171	169
75	108	112	116	121	117	113	109	111	113	117	112	108	106	107	113	116	115	110	109
80	63.1	65.4	67.1	69.9	67.7	65.8	62.7	64.0	64.4	66.0	63.1	61.3	60.6	60.7	64.5	65.6	66.1	63.3	63.5
85	27.7	28.7	29.4	30.5	29.4	28.4	26.7	27.1	26.8	27.1	25.6	24.7	24.5	24.8	26.6	27.3	28.0	27.1	27.4
90	2.03	1.82	1.56	1.09	0.69	0.47	0.44	0.45	0.46	0.47	0.47	0.47	0.40	0.40	0.41	0.42	0.41	0.43	0.62

C Range: 0 - 360DEG  
 C Interval: 15.0DEG  
 Test Speed: HIGH  
 Temperature:25.3DEG  
 Operators:Cao Chengpei  
 Test Date:2014-08-30

γ Range: 0 - 90DEG  
 γ Interval: 1.0DEG  
 Test System:EVERFINE GO-2000B\_V1 SYSTEM V2.0.288  
 Humidity:53.0%  
 Test Distance:5.780m [K=1.0000]  
 Remarks:

LUMINOUS DISTRIBUTION INTENSITY DATA

Test:U:220.3V I:0.1553A P:33.85W PF:0.9889 Lamp Flux:3458.84x1 lm		
NAME: CS8F-30S-840	TYPE:Downlight	SERIAL No.:
SPEC.:4000K	DIM.: L230mm*W230mm*H76mm	
MFR.: E-LITE LIGHTING CO.,LTD.		

Table--2

UNIT: cd

C( DEG)	285	300	315	330	345												
0	1716	1716	1716	1716	1716												
5	1704	1704	1703	1703	1702												
10	1665	1665	1661	1662	1660												
15	1603	1602	1596	1597	1596												
20	1522	1518	1511	1514	1515												
25	1422	1417	1409	1413	1415												
30	1300	1299	1291	1295	1294												
35	1155	1163	1157	1162	1152												
40	989	1006	1006	1008	989												
45	813	839	844	842	815												
50	641	671	679	675	645												
55	488	515	526	519	492												
60	357	379	389	383	360												
65	252	269	276	271	255												
70	171	182	187	184	173												
75	110	117	119	119	112												
80	64.2	68.1	69.0	68.9	65.5												
85	28.0	30.0	30.4	30.6	29.1												
90	1.19	1.71	2.14	2.43	2.64												

C Range: 0 - 360DEG  
 C Interval: 15.0DEG  
 Test Speed: HIGH  
 Temperature:25.3DEG  
 Operators:Cao Chengpei  
 Test Date:2014-08-30

γ Range: 0 - 90DEG  
 γ Interval: 1.0DEG  
 Test System:EVERFINE GO-2000B\_V1 SYSTEM V2.0.288  
 Humidity:53.0%  
 Test Distance:5.780m [K=1.0000]  
 Remarks:

## Photometric Data Table [cd]

G/C	0.0	15.0	30.0	45.0	60.0	75.0	90.0	105.0	120.0	135.0
0.0	1716	1716	1717	1716	1716	1716	1716	1716	1716	1716
3.0	1710	1710	1709	1710	1709	1709	1709	1709	1709	1710
6.0	1694	1693	1692	1692	1691	1692	1691	1692	1691	1693
9.0	1668	1668	1665	1665	1664	1665	1664	1665	1664	1666
12.0	1635	1635	1630	1629	1627	1630	1629	1630	1628	1630
15.0	1595	1594	1587	1586	1584	1587	1587	1588	1584	1585
18.0	1549	1546	1538	1535	1533	1538	1539	1539	1533	1534
21.0	1496	1493	1482	1479	1476	1483	1484	1484	1476	1476
24.0	1436	1433	1420	1416	1414	1422	1423	1423	1413	1413
27.0	1369	1365	1353	1349	1346	1354	1354	1354	1344	1344
30.0	1293	1291	1279	1278	1273	1280	1278	1279	1269	1271
33.0	1208	1210	1198	1201	1192	1199	1193	1197	1187	1192
36.0	1114	1119	1111	1117	1106	1109	1100	1107	1099	1107
39.0	1014	1021	1018	1028	1015	1013	1002	1009	1007	1017
42.0	908.3	917.2	920.4	934.0	919.5	912.1	898.3	907.3	909.9	922.4
45.0	801.1	812.5	820.1	837.6	821.1	810.2	793.1	804.0	810.3	825.9
48.0	696.0	708.4	720.2	740.2	722.9	708.7	690.5	701.9	711.6	728.7
51.0	595.7	608.9	623.5	644.4	627.2	611.3	592.6	604.2	615.7	633.7
54.0	505.9	516.1	533.1	552.8	537.9	520.0	504.6	513.1	528.0	543.0
57.0	422.0	431.7	449.3	466.7	454.6	436.3	422.3	429.9	444.3	458.1
60.0	347.7	356.8	372.6	388.5	377.7	361.6	348.9	355.8	368.4	380.7
63.0	283.3	291.1	304.6	318.4	309.4	295.8	284.8	290.6	301.2	311.5
66.0	228.1	234.8	245.5	257.1	249.6	238.9	229.5	234.4	242.6	251.1
69.0	181.3	186.7	195.0	204.2	198.3	190.0	182.5	186.3	192.2	198.7
72.0	141.7	145.9	151.9	158.9	154.4	148.4	142.5	145.3	149.3	153.9
75.0	108.3	111.8	115.7	121.2	117.4	113.5	108.7	110.8	113.0	116.5
78.0	79.91	82.53	84.99	88.63	86.01	83.44	79.76	81.27	82.32	84.50
81.0	55.57	57.39	59.07	61.24	59.54	57.64	55.05	55.88	56.27	57.43
84.0	34.15	35.47	36.29	37.66	36.33	35.29	33.35	33.85	33.65	34.14
87.0	15.99	16.76	16.94	17.42	16.63	16.15	14.96	15.07	14.58	14.49
90.0	2.026	1.822	1.560	1.092	0.6925	0.4658	0.4430	0.4492	0.4617	0.4721
G/C	150.0	165.0	180.0	195.0	210.0	225.0	240.0	255.0	270.0	285.0
0.0	1716	1716	1716	1716	1717	1716	1716	1716	1716	1716
3.0	1710	1711	1712	1712	1713	1712	1713	1712	1713	1712
6.0	1693	1695	1697	1696	1698	1698	1699	1699	1699	1698
9.0	1666	1669	1672	1671	1673	1673	1675	1675	1676	1675
12.0	1630	1634	1638	1637	1639	1638	1642	1643	1645	1643
15.0	1586	1592	1597	1595	1597	1595	1601	1602	1606	1603
18.0	1535	1542	1549	1547	1547	1545	1551	1555	1561	1557
21.0	1477	1486	1494	1491	1491	1488	1496	1501	1499	1504
24.0	1413	1423	1431	1428	1428	1425	1434	1440	1449	1444
27.0	1343	1353	1362	1358	1359	1355	1365	1371	1381	1376
30.0	1267	1278	1285	1280	1284	1280	1290	1294	1305	1300
33.0	1185	1193	1201	1196	1204	1200	1211	1209	1222	1215
36.0	1097	1102	1108	1103	1116	1114	1123	1117	1128	1123
39.0	1005	1005	1008	1006	1022	1023	1029	1018	1026	1023
42.0	907.8	903.3	904.5	903.2	924.4	927.2	931.0	914.5	920.0	919.1
45.0	809.0	800.4	799.5	799.3	824.6	829.6	830.6	809.1	812.6	812.9
48.0	710.6	698.7	695.7	697.3	724.7	731.6	730.2	705.7	706.3	708.6
51.0	615.5	601.1	596.8	599.2	627.6	635.1	632.5	606.3	605.4	608.4
54.0	528.1	510.3	505.3	510.6	535.5	544.7	540.0	516.4	511.9	517.9
57.0	444.3	427.0	421.9	427.2	450.2	460.3	454.0	432.1	426.9	433.2
60.0	368.3	352.9	348.0	352.1	372.9	381.6	376.2	356.2	351.9	357.0
63.0	300.9	287.6	283.4	287.0	304.4	312.0	307.4	290.7	286.7	291.2
66.0	241.9	231.4	227.7	230.4	244.7	250.7	247.3	233.7	230.8	234.2
69.0	191.4	183.2	180.4	182.2	193.5	197.9	195.8	185.1	183.1	185.8
72.0	148.2	142.3	140.2	141.5	149.9	153.3	152.0	144.3	142.9	144.9
75.0	111.9	108.0	106.4	107.1	113.4	115.6	115.2	109.7	109.2	110.5
78.0	81.08	78.50	77.57	77.90	82.47	83.97	84.17	80.48	80.38	81.32
81.0	55.02	53.24	52.76	53.02	56.19	57.41	57.72	55.53	55.60	56.37
84.0	32.35	31.35	31.02	31.32	33.41	34.26	34.88	33.81	33.98	34.69
87.0	13.49	13.23	13.34	13.45	14.41	14.77	15.47	15.27	15.61	16.14
90.0	0.4700	0.4658	0.3972	0.3993	0.4076	0.4222	0.4118	0.4305	0.6197	1.187
G/C	300.0	315.0	330.0	345.0						
0.0	1716	1716	1716	1716						
3.0	1712	1712	1711	1711						
6.0	1698	1697	1696	1695						
9.0	1674	1672	1672	1670						
12.0	1642	1638	1639	1637						
15.0	1602	1596	1597	1596						
18.0	1554	1547	1550	1550						
21.0	1500	1492	1495	1496						

C Range: 0 - 360DEG

C Interval: 15.0DEG

Test Speed: HIGH

Temperature: 25.3DEG

Operators: Cao Chengpei

Test Date: 2014-08-30

γ Range: 0 - 90DEG

γ Interval: 1.0DEG

Test System: EVERFINE GO-2000B\_V1 SYSTEM V2.0.288

Humidity: 53.0%

Test Distance: 5.780m [K=1.0000]

Remarks:

## Photometric Data Table [cd]

24.0	1439	1431	1434	1436
27.0	1372	1364	1368	1369
30.0	1299	1291	1295	1294
33.0	1221	1213	1218	1211
36.0	1133	1128	1132	1120
39.0	1039	1038	1040	1023
42.0	940.5	942.6	942.5	920.3
45.0	839.0	844.0	842.2	815.2
48.0	737.3	744.5	741.2	711.7
51.0	638.5	647.0	642.5	611.7
54.0	544.9	555.1	548.9	521.5
57.0	457.9	469.3	461.6	436.5
60.0	379.4	388.8	382.6	360.0
63.0	309.9	318.3	312.8	294.0
66.0	249.8	256.0	251.9	236.7
69.0	197.8	202.6	199.7	187.9
72.0	154.0	157.3	155.4	146.8
75.0	117.3	119.3	118.6	112.1
78.0	86.16	87.44	87.05	82.65
81.0	59.76	60.75	60.48	57.76
84.0	36.88	37.44	37.48	35.77
87.0	17.38	17.64	17.92	17.09
90.0	1.705	2.142	2.431	2.643

C Range: 0 - 360DEG  
 C Interval: 15.0DEG  
 Test Speed: HIGH  
 Temperature: 25.3DEG  
 Operators: Cao Chengpei  
 Test Date: 2014-08-30

γ Range: 0 - 90DEG  
 γ Interval: 1.0DEG  
 Test System: EVERFINE GO-2000B\_V1 SYSTEM V2.0.288  
 Humidity: 53.0%  
 Test Distance: 5.780m [K=1.0000]  
 Remarks: