

LED Downlight CATO Series CS6R-20S-830



Light Output Ratio:	100.0%	
Luminaire Power:	21.49 W	
SHR Nominal:	1.25	Calculated using the TM5
SHR Maximum:	1.25	fine grid method.

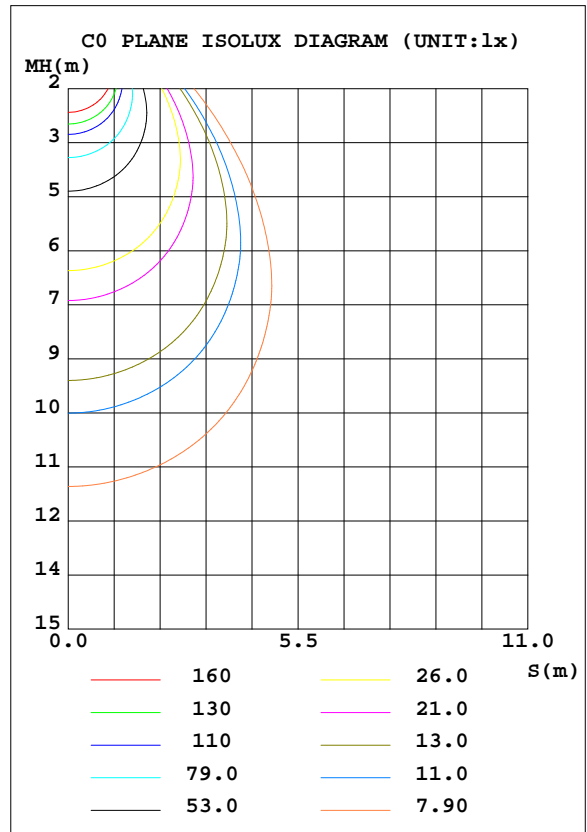
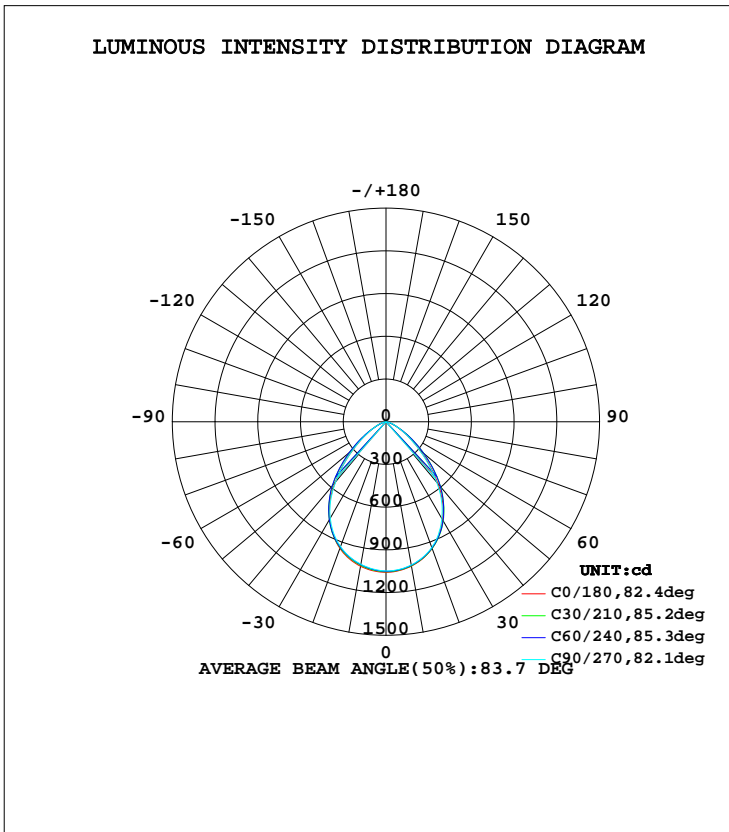
C Range: 0 - 360DEG
 C Interval: 15.0DEG
 Test Speed: HIGH
 Temperature: 25.3DEG
 Operators: Cao Chengpei
 Test Date: 2014-08-29

γ Range: 0 - 90DEG
 γ Interval: 1.0DEG
 Test System: EVERFINE GO-2000B_V1 SYSTEM V2.0.288
 Humidity: 53.0%
 Test Distance: 5.780m [K=1.0000]
 Remarks:

LUMINAIRE PHOTOMETRIC TEST REPORT

Test:U:220.3V I:0.1017A P:21.49W PF:0.9592 Lamp Flux:1870.63x1 lm		
NAME: CS6R-20S-830	TYPE:Downlight	SERIAL No.:
SPEC.:3000K	DIM.: L169mm*W169mm*H66mm	
MFR.: E-LITE LIGHTING CO.,LTD.		

DATA OF LAMP		PHOTOMETRIC DATA Eff: 87.07 lm/W			
MODEL	SAMSUNG-3000K	Imax(cd)	1057	S/MH(C0/180)	1.13
NOMINAL POWER(W)	22	LOR(%)	100.0	S/MH(C90/270)	1.13
RATED VOLTAGE(V)	220	TOTAL FLUX(lm)	1870.6	η UP, DN(C0-180)	0.0, 50.4
NOMINAL FLUX(lm)	1870.63	CIE CLASS	DIRECT	η UP, DN(C180-360)	0.0, 49.6
LAMPS INSIDE	1	η up(%)	0.0	CIBSE SHR NOM	1.25
TEST VOLTAGE(V)	220	η down(%)	100.0	CIBSE SHR MAX	1.25



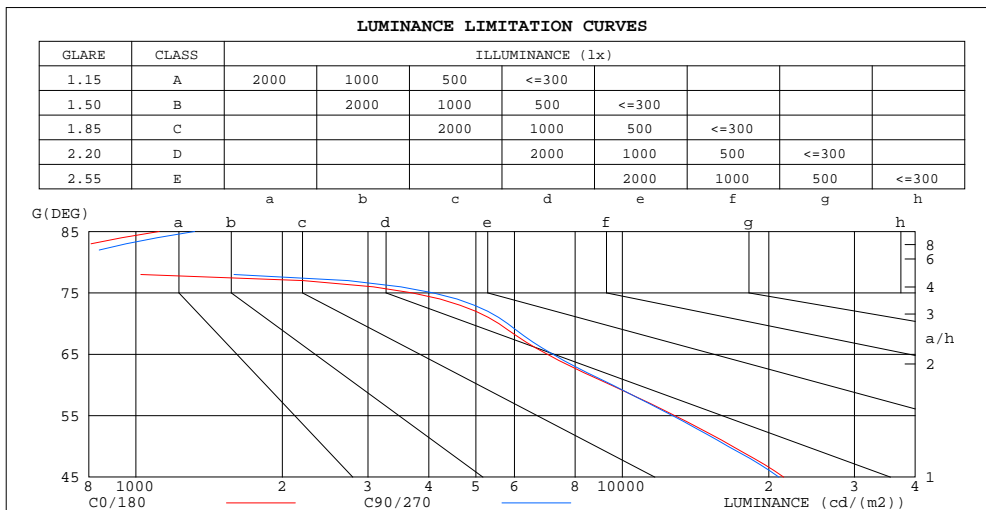
C Range: 0 - 360DEG
 C Interval: 15.0DEG
 Test Speed: HIGH
 Temperature:25.3DEG
 Operators:Cao Chengpei
 Test Date:2014-08-29

γ Range: 0 - 90DEG
 γ Interval: 1.0DEG
 Test System:EVERFINE GO-2000B_V1 SYSTEM V2.0.288
 Humidity:53.0%
 Test Distance:5.780m [K=1.0000]
 Remarks:

**ZONAL FLUX DIAGRAM
AND LUMINANCE LIMITATION CURVES**

ZONAL FLUX DIAGRAM:

γ	C0	C45	C90	C135	C180	C225	C270	C315	γ	Φ zone	Φ total	Φ lum,lamp
10	1029	1026	1022	1019	1030	1021	1017	1014	0- 10	98.78	98.78	5.28,5.28
20	946.6	947.6	939.7	939.2	946.7	939.9	933.3	933.0	10- 20	277.9	376.7	20.1,20.1
30	793.5	810.9	784.9	801.2	789.4	800.1	782.9	794.8	20- 30	401.6	778.3	41.6,41.6
40	567.0	607.1	554.7	596.4	555.6	593.1	549.5	595.4	30- 40	431.2	1210	64.7,64.7
50	309.5	365.6	303.0	353.7	297.5	344.9	298.8	352.8	40- 50	346.3	1556	83.2,83.2
60	135.2	153.5	136.3	147.3	129.4	137.4	129.6	144.8	50- 60	201.2	1757	93.9,93.9
70	54.46	46.77	56.80	44.70	52.95	38.47	50.57	41.56	60- 70	85.45	1842	98.5,98.5
80	2.885	7.668	3.384	6.961	2.187	4.512	1.975	5.109	70- 80	25.02	1867	99.8,99.8
90	0.1414	0.5407	1.013	0.4118	0.1456	0.0832	0.0853	0.0811	80- 90	3.195	1871	100,100
100									90-100			
110									100-110			
120									110-120			
130									120-130			
140									130-140			
150									140-150			
160									150-160			
170									160-170			
180									170-180			
DEG	LUMINOUS INTENSITY:cd									UNIT:lm		



LUMINANCE cd/(m2)		
G(DEG)	C0/180	C90/270
85	1117	1321
80	582	682
75	3702	4087
70	5576	5814
65	7012	7198
60	9471	9542
55	12826	12684
50	16858	16504
45	21469	20983

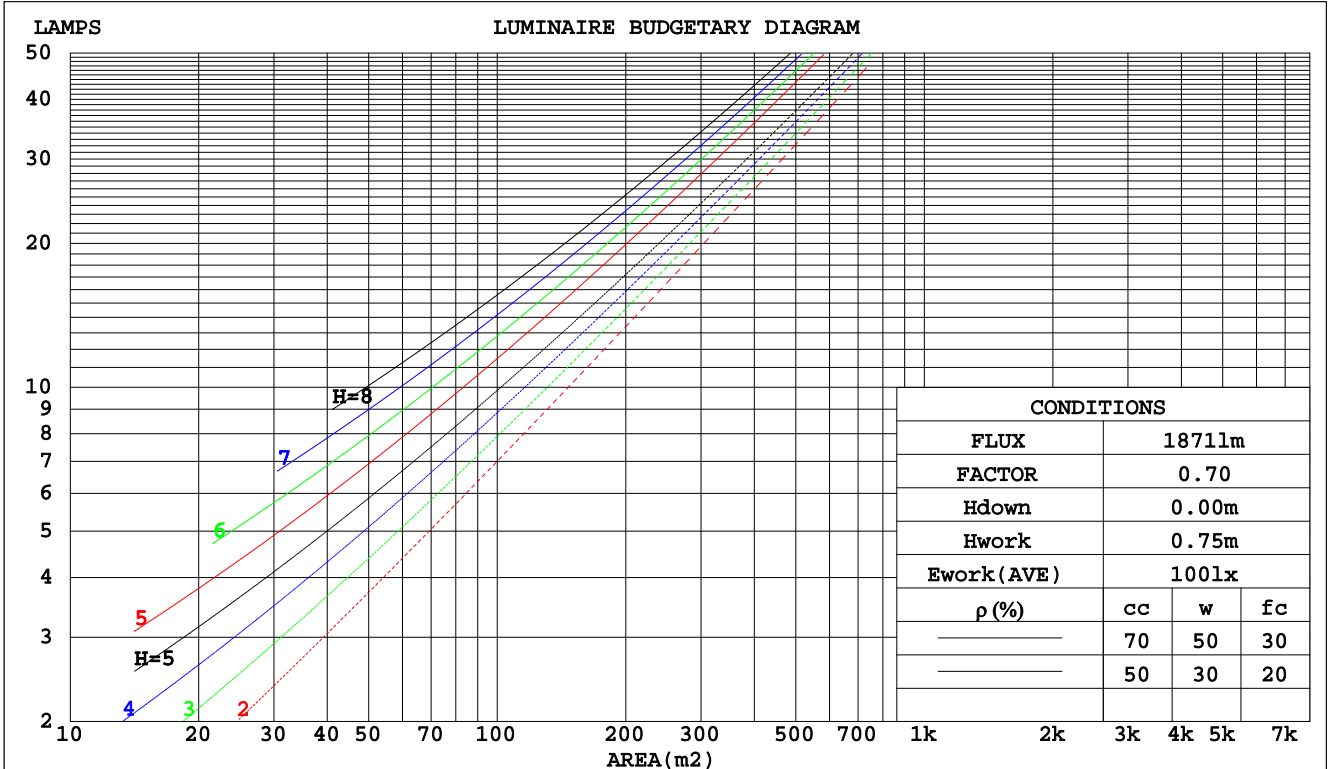
C Range: 0 - 360DEG
 C Interval: 15.0DEG
 Test Speed: HIGH
 Temperature: 25.3DEG
 Operators: Cao Chengpei
 Test Date: 2014-08-29

γ Range: 0 - 90DEG
 γ Interval: 1.0DEG
 Test System: EVERFINE GO-2000B_V1 SYSTEM V2.0.288
 Humidity: 53.0%
 Test Distance: 5.780m [K=1.0000]
 Remarks:

CU AND LUMINAIRE BUDGETARY ESTIMATE DIAGRAM

Test:U:220.3V I:0.1017A P:21.49W PF:0.9592 Lamp Flux:1870.63x1 lm		
NAME: CS6R-20S-830	TYPE:Downlight	SERIAL No.:
SPEC.:3000K	DIM.: L169mm*W169mm*H66mm	
MFR.: E-LITE LIGHTING CO.,LTD.		

pcc	80%			70%			50%			30%			10%			0
	50%	30%	10%	50%	30%	10%	50%	30%	10%	50%	30%	10%	50%	30%	10%	0
pw																
pfc																
RCR	RCR:Room Cavity Ratio															
	Coefficients of Utilization(CU)															
0.0	1.19	1.19	1.19	1.16	1.16	1.16	1.11	1.11	1.11	1.06	1.06	1.06	1.02	1.02	1.02	.00
1.0	1.08	1.05	1.02	1.06	1.03	1.00	1.02	.99	.97	.98	.96	.94	.94	.93	.91	.90
2.0	.97	.92	.88	.96	.91	.87	.92	.88	.85	.89	.86	.83	.86	.83	.81	.79
3.0	.88	.81	.76	.86	.80	.75	.84	.78	.74	.81	.77	.73	.79	.75	.72	.70
4.0	.80	.72	.67	.78	.72	.66	.76	.70	.66	.74	.69	.65	.72	.68	.64	.62
5.0	.72	.65	.59	.71	.64	.59	.69	.63	.58	.68	.62	.58	.66	.61	.57	.55
6.0	.66	.59	.53	.65	.58	.53	.64	.57	.52	.62	.56	.52	.61	.56	.52	.50
7.0	.61	.53	.48	.60	.53	.48	.59	.52	.47	.57	.51	.47	.56	.51	.47	.45
8.0	.56	.49	.43	.55	.48	.43	.54	.48	.43	.53	.47	.43	.52	.47	.43	.41
9.0	.52	.45	.40	.51	.44	.39	.50	.44	.39	.49	.43	.39	.48	.43	.39	.37
10.0	.48	.41	.36	.48	.41	.36	.47	.40	.36	.46	.40	.36	.45	.40	.36	.34



C Range: 0 - 360DEG
 C Interval: 15.0DEG
 Test Speed: HIGH
 Temperature:25.3DEG
 Operators:Cao Chengpei
 Test Date:2014-08-29

γ Range: 0 - 90DEG
 γ Interval: 1.0DEG
 Test System:EVERFINE GO-2000B_V1 SYSTEM V2.0.288
 Humidity:53.0%
 Test Distance:5.780m [K=1.0000]
 Remarks:

WEC AND CCEC

Test:U:220.3V I:0.1017A P:21.49W PF:0.9592 Lamp Flux:1870.63x1 lm		
NAME: CS6R-20S-830	TYPE:Downlight	SERIAL No.:
SPEC.:3000K	DIM.: L169mm*W169mm*H66mm	
MFR.: E-LITE LIGHTING CO.,LTD.		

ρcc	80%			70%			50%			30%			10%			0
ρw	50%	30%	10%	50%	30%	10%	50%	30%	10%	50%	30%	10%	50%	30%	10%	0
ρfc	20%			20%			20%			20%			20%			0
RCR	RCR:Room Cavity Ratio						Wall Exitance Coefficients(WEC)									
0.0																
1.0	.231	.131	.042	.224	.128	.041	.211	.121	.039	.199	.115	.037	.189	.109	.035	
2.0	.226	.124	.038	.220	.121	.037	.209	.116	.036	.198	.111	.035	.189	.107	.034	
3.0	.215	.115	.034	.210	.113	.034	.201	.109	.033	.192	.105	.032	.183	.101	.031	
4.0	.204	.106	.031	.200	.104	.031	.191	.101	.030	.183	.098	.030	.176	.095	.029	
5.0	.193	.098	.028	.189	.097	.028	.181	.094	.028	.174	.092	.027	.168	.090	.027	
6.0	.182	.091	.026	.179	.090	.026	.172	.088	.026	.166	.086	.025	.160	.084	.025	
7.0	.172	.085	.024	.169	.084	.024	.163	.082	.024	.157	.081	.023	.152	.079	.023	
8.0	.163	.080	.022	.160	.079	.022	.155	.077	.022	.150	.076	.022	.145	.074	.022	
9.0	.155	.075	.021	.152	.074	.021	.147	.073	.021	.143	.072	.020	.138	.070	.020	
10.0	.147	.070	.020	.145	.070	.019	.140	.069	.019	.136	.068	.019	.132	.066	.019	

ρcc	80%			70%			50%			30%			10%			0
ρw	50%	30%	10%	50%	30%	10%	50%	30%	10%	50%	30%	10%	50%	30%	10%	0
ρfc	20%			20%			20%			20%			20%			0
RCR	RCR:Room Cavity Ratio						Ceiling Cavity Exitance Coefficients(CCEC)									
0.0	.190	.190	.190	.163	.163	.163	.111	.111	.111	.064	.064	.064	.020	.020	.020	
1.0	.175	.157	.141	.150	.135	.121	.102	.093	.084	.059	.054	.049	.019	.017	.016	
2.0	.163	.132	.106	.140	.114	.092	.096	.079	.064	.055	.046	.037	.018	.015	.012	
3.0	.154	.114	.082	.132	.098	.071	.091	.068	.050	.052	.040	.029	.017	.013	.010	
4.0	.146	.100	.065	.125	.086	.056	.086	.060	.040	.050	.035	.024	.016	.011	.008	
5.0	.138	.089	.053	.119	.077	.046	.082	.054	.032	.047	.032	.019	.015	.010	.006	
6.0	.132	.080	.044	.113	.070	.038	.078	.049	.027	.045	.029	.016	.015	.009	.005	
7.0	.125	.073	.037	.108	.064	.032	.075	.045	.023	.043	.026	.014	.014	.009	.004	
8.0	.120	.067	.032	.103	.058	.028	.071	.041	.020	.041	.024	.012	.013	.008	.004	
9.0	.114	.062	.027	.098	.054	.024	.068	.038	.017	.040	.023	.010	.013	.007	.003	
10.0	.109	.058	.024	.094	.051	.021	.065	.036	.015	.038	.021	.009	.012	.007	.003	

C Range: 0 - 360DEG
 C Interval: 15.0DEG
 Test Speed: HIGH
 Temperature:25.3DEG
 Operators:Cao Chengpei
 Test Date:2014-08-29

γ Range: 0 - 90DEG
 γ Interval: 1.0DEG
 Test System:EVERFINE GO-2000B_V1 SYSTEM V2.0.288
 Humidity:53.0%
 Test Distance:5.780m [K=1.0000]
 Remarks:

UGR(Unified Glare Rating) Table

Test:U:220.3V I:0.1017A P:21.49W PF:0.9592 Lamp Flux:1870.63x1 lm		
NAME: CS6R-20S-830	TYPE:Downlight	SERIAL No.:
SPEC.:3000K	DIM.: L169mm*W169mm*H66mm	
MFR.: E-LITE LIGHTING CO.,LTD.		

ceiling/cavity	0.7	0.7	0.5	0.5	0.3	0.7	0.7	0.5	0.5	0.3
walls	0.5	0.3	0.5	0.3	0.3	0.5	0.3	0.5	0.3	0.3
working plane	0.2	0.2	0.2	0.2	0.2	0.2	0.2	0.2	0.2	0.2
Room dimensions	Viewed crosswise					Viewed endwise				
x = 2H y = 2H	21.3	22.6	21.6	22.8	23.0	21.3	22.6	21.5	22.7	22.9
3H	21.5	22.7	21.8	22.9	23.1	21.5	22.7	21.8	22.9	23.1
4H	21.5	22.6	21.8	22.9	23.1	21.6	22.7	21.9	22.9	23.1
6H	21.5	22.5	21.8	22.7	23.0	21.5	22.5	21.8	22.8	23.0
8H	21.4	22.4	21.7	22.7	22.9	21.4	22.4	21.8	22.7	23.0
12H	21.4	22.3	21.7	22.6	22.9	21.4	22.3	21.7	22.6	22.9
4H 2H	21.4	22.5	21.7	22.7	23.0	21.4	22.5	21.7	22.7	23.0
3H	21.7	22.6	22.0	22.9	23.2	21.7	22.6	22.0	22.9	23.2
4H	21.7	22.6	22.1	22.9	23.2	21.8	22.6	22.1	22.9	23.2
6H	21.7	22.4	22.1	22.8	23.1	21.7	22.5	22.1	22.8	23.2
8H	21.6	22.3	22.0	22.7	23.1	21.7	22.4	22.1	22.7	23.1
12H	21.6	22.2	22.0	22.6	23.0	21.6	22.3	22.0	22.6	23.0
8H 4H	21.7	22.4	22.1	22.7	23.1	21.7	22.4	22.1	22.7	23.1
6H	21.6	22.2	22.0	22.6	23.0	21.6	22.2	22.1	22.6	23.0
8H	21.6	22.1	22.0	22.5	22.9	21.6	22.1	22.1	22.5	23.0
12H	21.5	22.0	22.0	22.4	22.9	21.6	22.0	22.0	22.4	22.9
12H 4H	21.6	22.2	22.0	22.6	23.0	21.6	22.3	22.1	22.6	23.0
6H	21.6	22.1	22.0	22.5	22.9	21.6	22.1	22.0	22.5	23.0
8H	21.5	21.9	22.0	22.4	22.9	21.6	22.0	22.0	22.4	22.9
Variations with the observer position at spacings:										
S = 1.0H	+ 1.2 / - 1.6					+ 1.1 / - 1.6				
1.5H	+ 0.5 / - 1.0					+ 0.5 / - 1.0				
2.0H	+ 2.1 / - 2.4					+ 2.0 / - 2.3				

CIE Pub.117 Corrected 1871 lm Total Lamp Luminous Flux.(8log(F/F0) = 2.2)

C Range: 0 - 360DEG
 C Interval: 15.0DEG
 Test Speed: HIGH
 Temperature:25.3DEG
 Operators:Cao Chengpei
 Test Date:2014-08-29

γ Range: 0 - 90DEG
 γ Interval: 1.0DEG
 Test System:EVERFINE GO-2000B_V1 SYSTEM V2.0.288
 Humidity:53.0%
 Test Distance:5.780m [K=1.0000]
 Remarks:

UTILIZATION FACTORS TABLE

Test:U:220.3V I:0.1017A P:21.49W PF:0.9592 Lamp Flux:1870.63x1 lm		
NAME: CS6R-20S-830	TYPE:Downlight	SERIAL No.:
SPEC.:3000K	DIM.: L169mm*W169mm*H66mm	
MFR.: E-LITE LIGHTING CO.,LTD.		

REFLECTANCE										
Ceiling	0.8	0.8	0.8	0.7	0.7	0.7	0.5	0.5	0.5	0
Walls	0.7	0.5	0.3	0.7	0.5	0.3	0.7	0.5	0.3	0
Working plane	0.2	0.2	0.2	0.2	0.2	0.2	0.2	0.2	0.2	0
ROOM INDEX	UTILIZATION FACTORS(PERCENT) $k(RI) \times RCR = 5$									
k = 0.60	69	59	54	68	59	54	67	59	53	48
0.80	79	70	64	78	69	64	77	69	63	58
1.00	87	78	73	86	78	72	84	78	72	66
1.25	93	85	80	92	84	79	89	83	78	73
1.50	97	90	85	96	89	84	93	87	83	77
2.00	102	96	91	101	95	91	98	93	89	83
2.50	105	99	95	103	98	94	100	96	92	85
3.00	107	102	98	105	101	97	102	98	95	88
4.00	110	106	103	108	104	101	104	101	99	91
5.00	112	108	106	110	107	104	105	103	101	93
ROOM INDEX	UF(total)									Direct
According to DIN EN 13032-2 2004			Suspended				SHRNOM = 1.25			

C Range: 0 - 360DEG
 C Interval: 15.0DEG
 Test Speed: HIGH
 Temperature:25.3DEG
 Operators:Cao Chengpei
 Test Date:2014-08-29

γ Range: 0 - 90DEG
 γ Interval: 1.0DEG
 Test System:EVERFINE GO-2000B_V1 SYSTEM V2.0.288
 Humidity:53.0%
 Test Distance:5.780m [K=1.0000]
 Remarks:

ISOCANDELA DIAGRAM

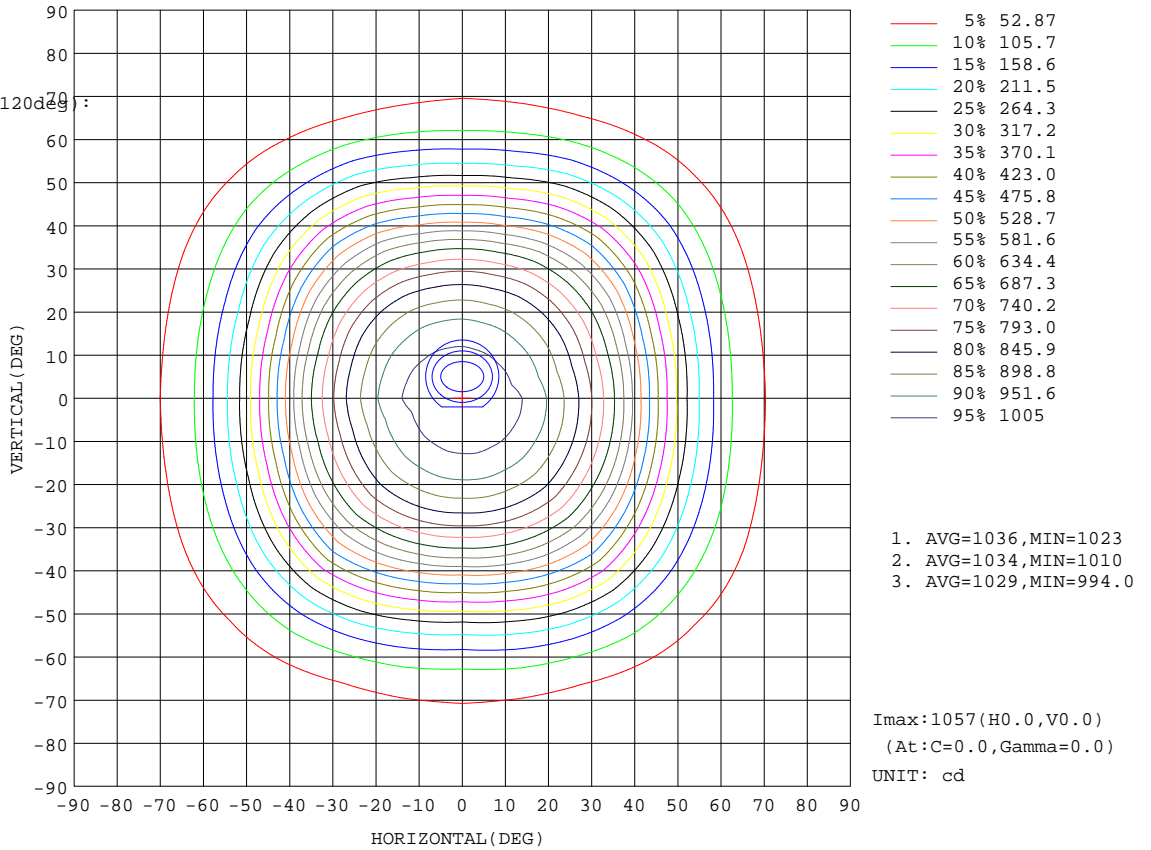
Test:U:220.3V I:0.1017A P:21.49W PF:0.9592 Lamp Flux:1870.63x1 lm		
NAME: CS6R-20S-830	TYPE:Downlight	SERIAL No.:
SPEC.:3000K	DIM.: L169mm*W169mm*H66mm	
MFR.: E-LITE LIGHTING CO.,LTD.		

Conical surface Flux(90deg):

1399.4 lm
%lum = 74.8%
%lamp = 74.8%

Conical surface Flux(120deg):

1757 lm
%lum = 93.9%
%lamp = 93.9%



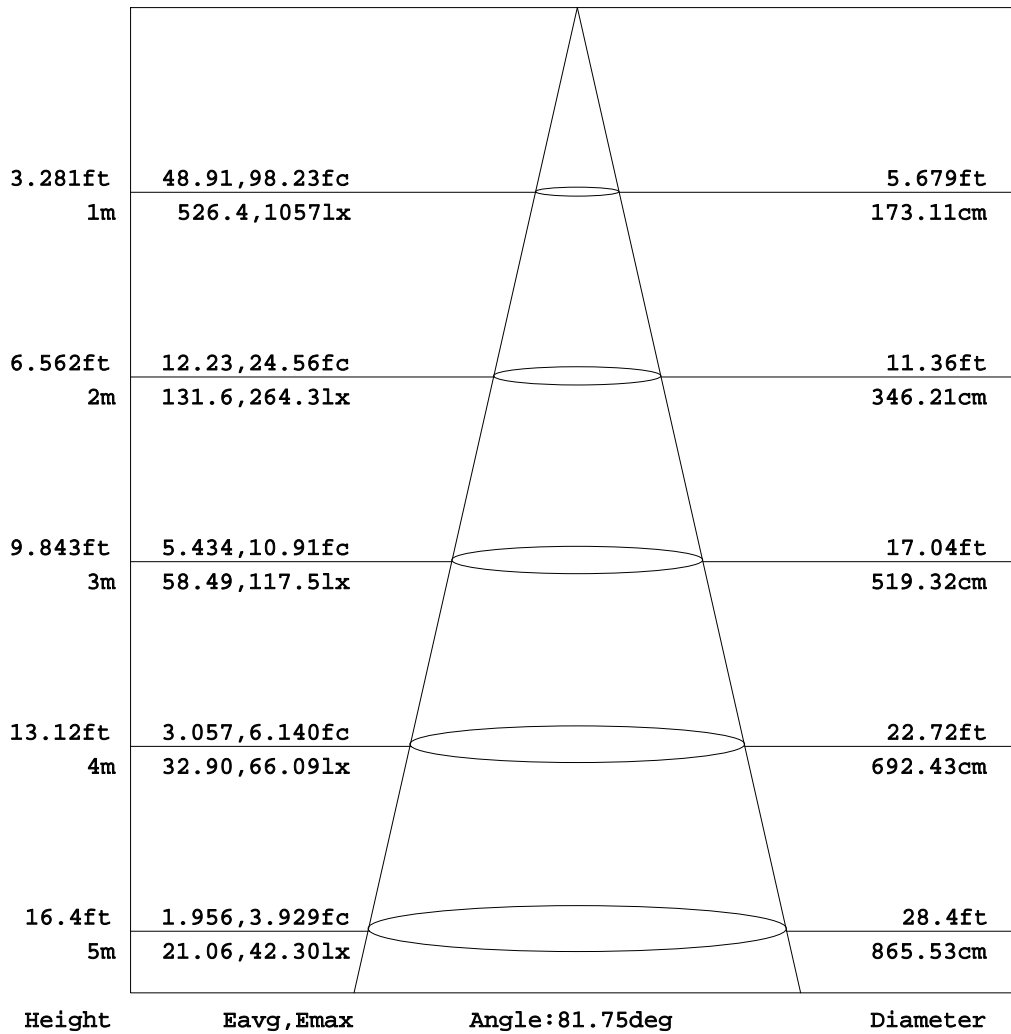
C Range: 0 - 360DEG
C Interval: 15.0DEG
Test Speed: HIGH
Temperature:25.3DEG
Operators:Cao Chengpei
Test Date:2014-08-29

γ Range: 0 - 90DEG
γ Interval: 1.0DEG
Test System:EVERFINE GO-2000B_V1 SYSTEM V2.0.288
Humidity:53.0%
Test Distance:5.780m [K=1.0000]
Remarks:

AAI Figure

Test:U:220.3V I:0.1017A P:21.49W PF:0.9592 Lamp Flux:1870.63x1 lm		
NAME: CS6R-20S-830	TYPE:Downlight	SERIAL No.:
SPEC.:3000K	DIM.: L169mm*W169mm*H66mm	
MFR.: E-LITE LIGHTING CO.,LTD.		

Flux out:1250 lm



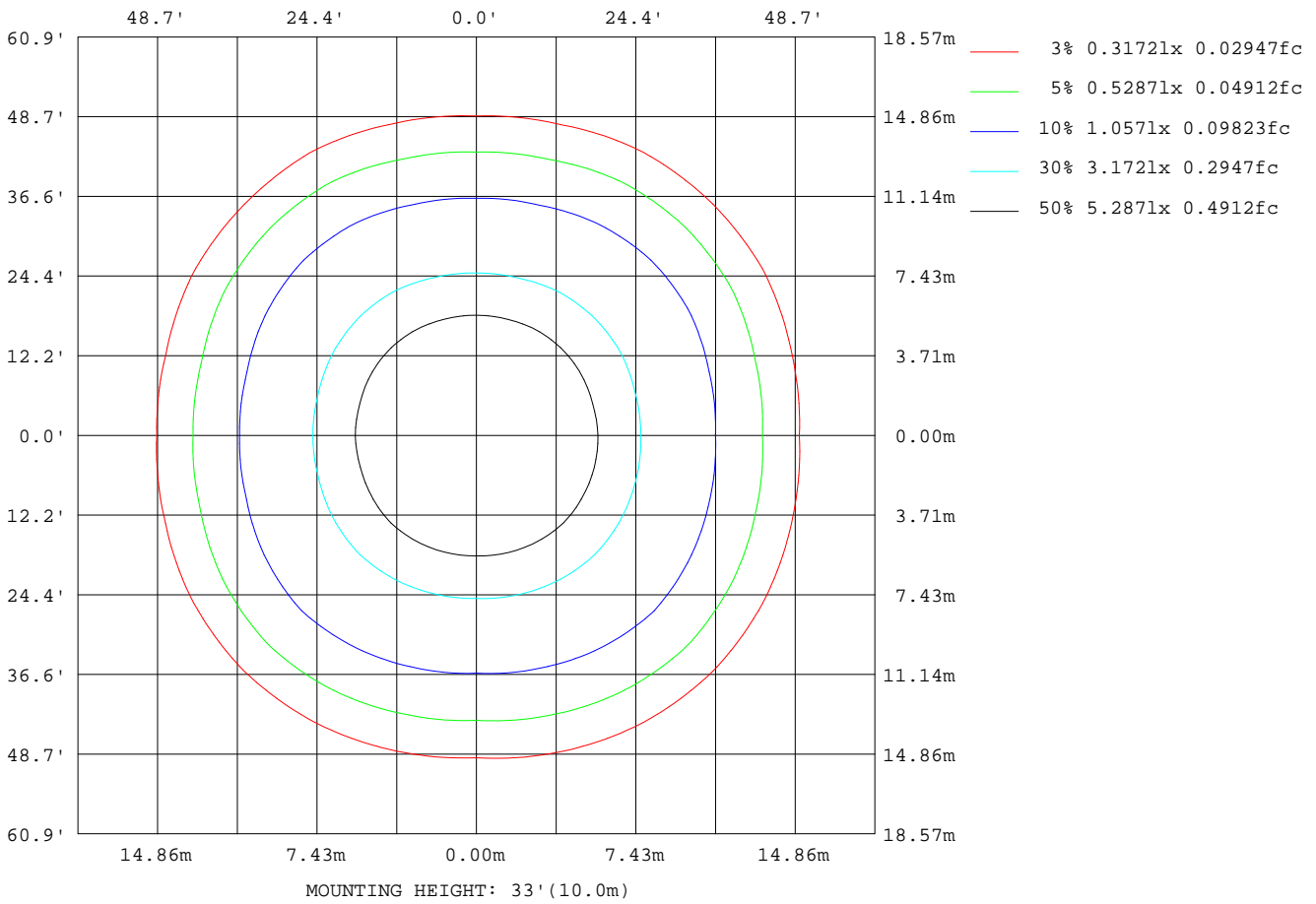
Note:The Curves indicate the illuminated area and the average illumination when the luminaire is at different distance.

C Range: 0 - 360DEG
C Interval: 15.0DEG
Test Speed: HIGH
Temperature:25.3DEG
Operators:Cao Chengpei
Test Date:2014-08-29

γ Range: 0 - 90DEG
γ Interval: 1.0DEG
Test System:EVERFINE GO-2000B_V1 SYSTEM V2.0.288
Humidity:53.0%
Test Distance:5.780m [K=1.0000]
Remarks:

ISOLUX DIAGRAM

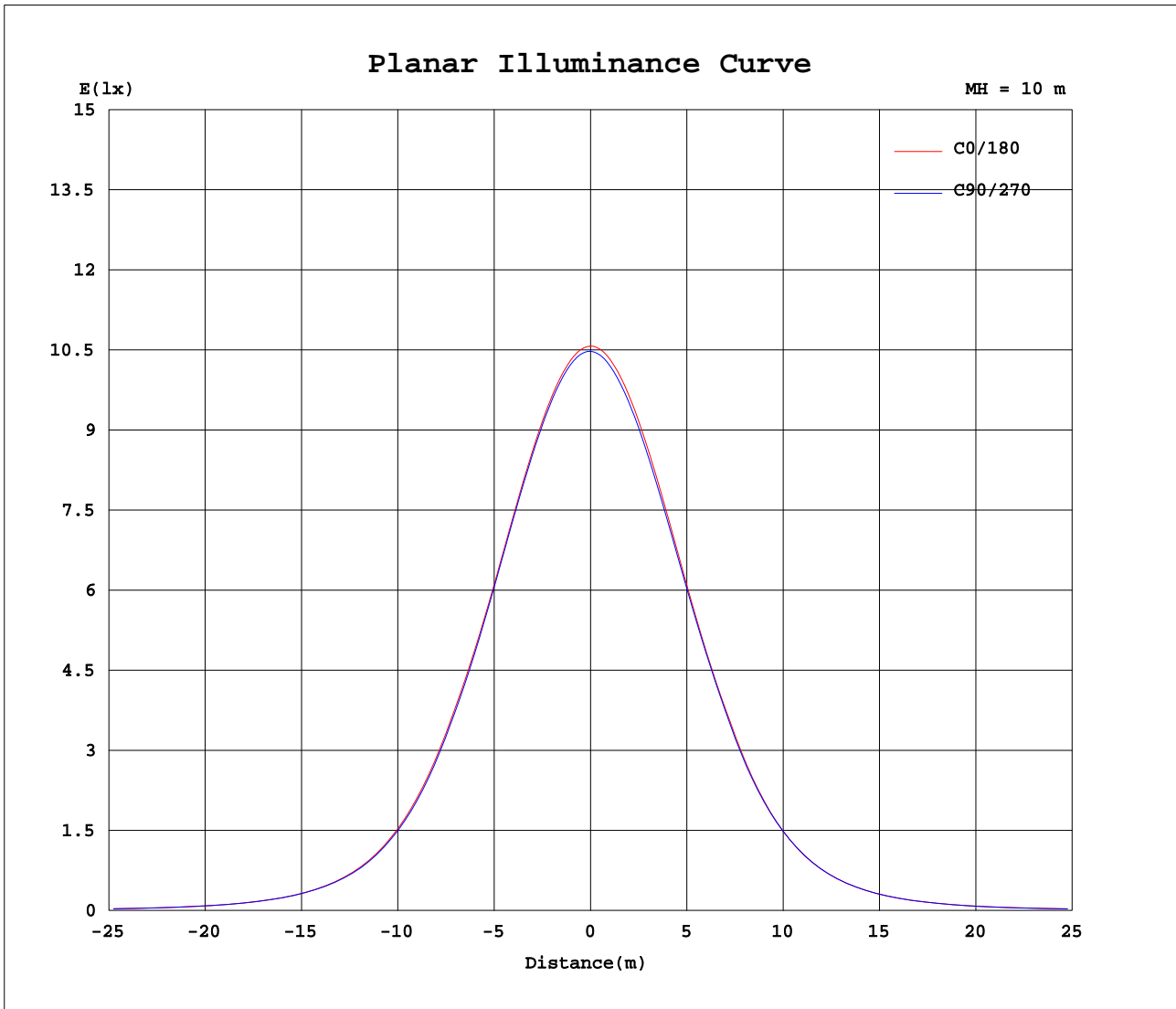
Test:U:220.3V I:0.1017A P:21.49W PF:0.9592 Lamp Flux:1870.63x1 lm		
NAME: CS6R-20S-830	TYPE:Downlight	SERIAL No.:
SPEC.:3000K	DIM.: L169mm*W169mm*H66mm	
MFR.: E-LITE LIGHTING CO.,LTD.		



C Range: 0 - 360DEG
 C Interval: 15.0DEG
 Test Speed: HIGH
 Temperature:25.3DEG
 Operators:Cao Chengpei
 Test Date:2014-08-29

γ Range: 0 - 90DEG
 γ Interval: 1.0DEG
 Test System:EVERFINE GO-2000B_V1 SYSTEM V2.0.288
 Humidity:53.0%
 Test Distance:5.780m [K=1.0000]
 Remarks:

Planar Illuminance Curve



C Range: 0 - 360DEG
 C Interval: 15.0DEG
 Test Speed: HIGH
 Temperature: 25.3DEG
 Operators: Cao Chengpei
 Test Date: 2014-08-29

γ Range: 0 - 90DEG
 γ Interval: 1.0DEG
 Test System: EVERFINE GO-2000B_V1 SYSTEM V2.0.288
 Humidity: 53.0%
 Test Distance: 5.780m [K=1.0000]
 Remarks:

LUMINOUS DISTRIBUTION INTENSITY DATA

Test:U:220.3V I:0.1017A P:21.49W PF:0.9592 Lamp Flux:1870.63x1 lm		
NAME: CS6R-20S-830	TYPE:Downlight	SERIAL No.:
SPEC.:3000K	DIM.: L169mm*W169mm*H66mm	
MFR.: E-LITE LIGHTING CO.,LTD.		

Table--1

UNIT: cd

C (DEG) γ (DEG)	0	15	30	45	60	75	90	105	120	135	150	165	180	195	210	225	240	255	270
0	1057	1055	1054	1052	1050	1049	1048	1047	1046	1045	1044	1043	1057	1055	1054	1052	1050	1049	1048
5	1050	1049	1047	1046	1044	1043	1042	1041	1040	1039	1038	1037	1051	1048	1046	1043	1042	1040	1039
10	1029	1029	1027	1026	1024	1024	1022	1021	1019	1019	1017	1017	1030	1027	1025	1021	1019	1017	1017
15	996	996	994	993	991	990	988	988	986	986	984	984	996	992	990	986	985	983	983
20	947	948	947	948	944	943	940	940	938	939	936	935	947	942	942	940	939	934	933
25	879	883	885	888	882	877	872	874	877	879	873	868	877	874	879	879	876	869	867
30	794	799	804	811	802	792	785	789	796	801	791	783	789	787	797	800	796	785	783
35	694	700	707	715	704	692	682	687	696	705	693	683	687	684	698	703	699	685	679
40	567	579	598	607	595	572	555	565	585	596	585	559	556	560	584	593	588	560	550
45	434	448	472	492	469	442	424	437	459	481	457	428	420	426	455	474	461	430	419
50	309	324	347	366	347	321	303	317	337	354	334	306	298	303	330	345	338	310	299
55	210	221	238	247	238	221	208	217	230	238	228	210	202	205	223	228	228	210	201
60	135	143	150	154	151	146	136	143	146	147	143	135	129	131	138	137	140	134	130
65	84.6	87.3	85.4	88.9	86.5	89.7	86.9	88.1	83.6	85.1	80.2	81.8	81.3	79.0	77.3	76.4	76.9	78.6	79.7
70	54.5	52.5	46.8	46.8	47.8	53.8	56.8	53.6	46.5	44.7	43.9	49.2	53.0	48.2	41.8	38.5	40.4	45.5	50.6
75	27.4	27.3	23.8	22.5	24.2	28.7	30.2	28.5	23.7	21.5	22.1	25.2	27.1	24.4	20.4	17.5	19.0	22.0	24.4
80	2.88	3.57	4.73	7.67	5.65	4.18	3.38	3.87	4.61	6.96	4.53	3.08	2.19	2.62	3.03	4.51	3.02	2.42	1.98
85	2.78	3.32	3.94	4.36	4.22	3.81	3.29	3.62	3.79	3.83	3.43	2.77	2.11	2.41	2.61	2.71	2.54	2.19	1.87
90	0.14	0.16	0.38	0.54	0.75	0.96	1.01	0.85	0.64	0.41	0.19	0.19	0.15	0.10	0.08	0.08	0.08	0.09	0.09

C Range: 0 - 360DEG γ Range: 0 - 90DEG
 C Interval: 15.0DEG γ Interval: 1.0DEG
 Test Speed: HIGH Test System:EVERFINE GO-2000B_V1 SYSTEM V2.0.288
 Temperature:25.3DEG Humidity:53.0%
 Operators:Cao Chengpei Test Distance:5.780m [K=1.0000]
 Test Date:2014-08-29 Remarks:

LUMINOUS DISTRIBUTION INTENSITY DATA

Test:U:220.3V I:0.1017A P:21.49W PF:0.9592 Lamp Flux:1870.63x1 lm		
NAME: CS6R-20S-830	TYPE:Downlight	SERIAL No.:
SPEC.:3000K	DIM.: L169mm*W169mm*H66mm	
MFR.: E-LITE LIGHTING CO.,LTD.		

Table--2

UNIT: cd

C(DEG)	285	300	315	330	345														
0	1047	1046	1045	1044	1043														
5	1037	1037	1036	1036	1036														
10	1015	1015	1014	1015	1015														
15	980	981	980	982	982														
20	931	933	933	934	933														
25	866	871	872	872	867														
30	783	793	795	792	785														
35	681	697	701	699	689														
40	555	582	595	594	570														
45	427	457	479	471	442														
50	308	336	353	347	320														
55	208	229	237	236	219														
60	133	143	145	148	140														
65	79.7	80.5	81.5	82.7	83.5														
70	47.7	43.1	41.6	43.7	49.5														
75	23.2	20.9	18.9	21.1	24.8														
80	2.50	3.33	5.11	3.83	3.23														
85	2.30	2.79	3.16	3.19	3.01														
90	0.09	0.08	0.08	0.08	0.11														

C Range: 0 - 360DEG
 C Interval: 15.0DEG
 Test Speed: HIGH
 Temperature:25.3DEG
 Operators:Cao Chengpei
 Test Date:2014-08-29

γ Range: 0 - 90DEG
 γ Interval: 1.0DEG
 Test System:EVERFINE GO-2000B_V1 SYSTEM V2.0.288
 Humidity:53.0%
 Test Distance:5.780m [K=1.0000]
 Remarks:

Photometric Data Table [cd]

G/C	0.0	15.0	30.0	45.0	60.0	75.0	90.0	105.0	120.0	135.0
0.0	1057	1055	1054	1052	1050	1049	1048	1047	1046	1045
3.0	1055	1053	1051	1050	1048	1047	1046	1045	1044	1043
6.0	1047	1046	1044	1043	1041	1040	1039	1038	1037	1036
9.0	1034	1034	1032	1031	1029	1029	1027	1026	1024	1024
12.0	1018	1017	1015	1014	1012	1012	1010	1009	1007	1007
15.0	996.0	996.1	993.9	993.0	990.6	990.5	988.3	987.7	985.6	985.5
18.0	968.4	969.4	967.5	967.2	964.1	963.8	961.1	960.9	958.9	959.4
21.0	934.4	936.4	935.8	936.8	932.6	931.1	927.7	928.1	927.2	928.2
24.0	893.4	896.9	898.4	900.9	895.7	891.8	887.1	888.7	890.0	892.1
27.0	846.2	850.8	854.6	859.2	852.2	845.5	839.2	842.6	846.5	849.9
30.0	793.5	798.6	804.0	810.9	801.9	792.1	784.9	789.2	795.7	801.2
33.0	735.9	740.7	747.1	755.3	744.7	733.0	724.7	729.2	737.8	744.9
36.0	670.9	678.4	685.8	694.1	682.8	669.9	658.8	665.1	674.6	683.6
39.0	593.8	605.3	621.0	629.4	617.7	597.8	581.4	591.5	608.6	618.8
42.0	513.5	526.5	548.6	562.1	545.4	519.3	501.7	513.6	535.0	551.3
45.0	433.6	447.9	471.7	492.4	468.9	441.9	423.8	436.9	458.9	481.1
48.0	356.9	371.9	395.8	416.3	394.3	368.2	350.2	363.1	384.6	403.9
51.0	287.8	300.9	324.1	340.6	323.7	298.3	282.0	293.9	314.7	328.9
54.0	228.0	239.6	258.2	269.8	258.0	239.5	224.8	234.9	250.0	259.3
57.0	177.3	187.2	199.7	206.3	200.5	188.6	176.3	184.6	193.6	197.6
60.0	135.2	143.4	149.9	153.5	150.9	145.8	136.3	142.6	145.5	147.3
63.0	101.8	107.2	108.4	111.8	109.4	109.6	103.7	107.5	105.6	107.2
66.0	77.23	78.75	75.36	78.74	76.98	81.12	79.58	79.73	74.24	75.31
69.0	59.45	58.13	52.77	53.60	54.16	59.73	61.81	59.24	52.37	51.21
72.0	44.14	42.20	36.72	35.34	37.24	43.24	46.71	43.23	36.53	33.84
75.0	27.37	27.32	23.76	22.55	24.15	28.68	30.21	28.50	23.66	21.51
78.0	6.078	9.943	11.59	12.70	12.45	12.92	9.447	11.93	11.59	11.89
81.0	2.862	3.549	4.513	5.785	4.814	4.111	3.361	3.841	4.271	5.145
84.0	2.795	3.387	4.082	4.530	4.365	3.886	3.305	3.686	3.905	3.973
87.0	2.766	3.160	3.612	3.941	3.891	3.634	3.240	3.462	3.543	3.517
90.0	0.1414	0.1560	0.3785	0.5407	0.7549	0.9587	1.013	0.8485	0.6364	0.4118
G/C	150.0	165.0	180.0	195.0	210.0	225.0	240.0	255.0	270.0	285.0
0.0	1044	1043	1057	1055	1054	1052	1050	1049	1048	1047
3.0	1042	1041	1055	1052	1051	1048	1047	1045	1044	1043
6.0	1035	1034	1048	1044	1043	1040	1038	1036	1035	1033
9.0	1022	1022	1035	1032	1030	1026	1025	1022	1022	1020
12.0	1006	1005	1019	1015	1012	1009	1007	1005	1004	1003
15.0	983.9	983.7	996.5	992.0	990.1	986.5	985.4	983.0	982.6	980.1
18.0	957.0	956.5	968.8	964.2	963.2	960.0	959.1	955.8	955.2	952.7
21.0	924.7	922.9	934.4	930.0	931.0	929.0	927.7	922.6	921.6	919.3
24.0	886.5	882.5	892.8	889.2	893.0	892.5	890.5	883.1	881.7	879.9
27.0	842.3	835.5	844.0	841.3	848.4	849.7	846.3	837.3	835.3	834.8
30.0	791.0	782.7	789.4	787.0	797.2	800.1	795.8	784.6	782.9	782.7
33.0	734.0	723.7	729.3	727.1	739.2	743.5	739.2	726.5	724.0	724.8
36.0	672.4	661.0	663.9	661.7	676.0	681.5	678.2	661.9	654.6	657.1
39.0	608.0	585.6	583.4	586.8	608.1	615.8	612.5	585.9	576.0	581.2
42.0	533.9	505.6	500.8	505.3	534.5	546.6	537.8	507.6	496.6	503.3
45.0	456.8	427.6	420.4	425.5	455.4	474.5	461.4	430.1	419.3	426.6
48.0	381.9	353.2	343.7	350.3	378.4	396.5	385.5	357.5	346.1	354.2
51.0	311.5	285.0	276.7	281.1	306.7	319.6	314.8	287.5	277.0	285.8
54.0	247.3	227.3	219.0	222.9	242.3	249.3	248.4	227.7	218.6	225.6
57.0	191.0	177.0	169.7	172.9	185.8	188.3	189.9	176.7	169.2	175.1
60.0	142.6	135.1	129.4	131.0	137.9	137.4	140.2	133.7	129.6	132.7
63.0	102.2	100.2	97.34	96.87	98.68	97.88	99.04	98.05	96.50	98.32
66.0	71.00	73.82	74.62	71.37	68.25	66.88	67.75	70.38	72.76	71.69
69.0	49.61	54.52	57.90	53.34	47.19	44.46	46.09	50.86	55.59	52.89
72.0	34.33	39.26	43.20	38.68	32.56	28.66	30.96	35.84	40.67	37.82
75.0	22.09	25.19	27.15	24.39	20.43	17.53	19.00	22.03	24.42	23.16
78.0	10.92	9.454	7.234	7.487	8.864	8.842	8.268	6.095	3.681	5.290
81.0	3.961	3.015	2.165	2.589	2.921	3.233	2.904	2.355	1.940	2.463
84.0	3.547	2.834	2.117	2.448	2.674	2.800	2.615	2.230	1.886	2.352
87.0	3.134	2.602	2.079	2.284	2.452	2.497	2.369	2.105	1.844	2.166
90.0	0.1872	0.1851	0.1456	0.1040	0.0832	0.0832	0.0811	0.0873	0.0853	0.0873
G/C	300.0	315.0	330.0	345.0						
0.0	1046	1045	1044	1043						
3.0	1042	1041	1041	1040						
6.0	1033	1033	1033	1033						
9.0	1020	1019	1020	1020						
12.0	1003	1002	1003	1004						
15.0	980.5	979.6	981.6	981.8						
18.0	953.8	953.3	955.1	954.8						
21.0	921.8	922.1	923.2	921.5						

C Range: 0 - 360DEG
 C Interval: 15.0DEG
 Test Speed: HIGH
 Temperature: 25.3DEG
 Operators: Cao Chengpei
 Test Date: 2014-08-29

γ Range: 0 - 90DEG
 γ Interval: 1.0DEG
 Test System: EVERFINE GO-2000B_V1 SYSTEM V2.0.288
 Humidity: 53.0%
 Test Distance: 5.780m [K=1.0000]
 Remarks:

Photometric Data Table [cd]

24.0	885.0	885.8	885.7	881.9
27.0	842.0	843.3	842.0	836.2
30.0	792.7	794.8	792.3	784.7
33.0	736.6	739.9	737.5	728.7
36.0	675.5	680.0	678.8	668.1
39.0	606.7	617.2	616.3	595.9
42.0	532.3	550.8	545.4	518.9
45.0	456.8	478.7	470.8	441.8
48.0	382.9	402.8	395.9	367.9
51.0	313.4	328.2	324.0	297.6
54.0	248.8	258.7	256.7	237.3
57.0	191.2	197.0	198.0	184.9
60.0	142.7	144.8	147.6	140.0
63.0	102.6	103.9	105.8	103.0
66.0	70.98	71.66	72.92	75.02
69.0	48.85	47.90	49.68	55.13
72.0	33.50	31.00	33.64	39.27
75.0	20.86	18.92	21.08	24.79
78.0	8.817	9.669	9.805	8.297
81.0	3.205	3.745	3.592	3.184
84.0	2.885	3.272	3.293	3.051
87.0	2.572	2.869	2.980	2.908
90.0	0.0811	0.0811	0.0790	0.1061

C Range: 0 - 360DEG
 C Interval: 15.0DEG
 Test Speed: HIGH
 Temperature: 25.3DEG
 Operators: Cao Chengpei
 Test Date: 2014-08-29

γ Range: 0 - 90DEG
 γ Interval: 1.0DEG
 Test System: EVERFINE GO-2000B_V1 SYSTEM V2.0.288
 Humidity: 53.0%
 Test Distance: 5.780m [K=1.0000]
 Remarks: