

LED Downlight CATO Series CS6R-10S-840



Light Output Ratio:	100.0%	
Luminaire Power:	13.45 W	
SHR Nominal:	1.25	Calculated using the TM5
SHR Maximum:	1.30	fine grid method.

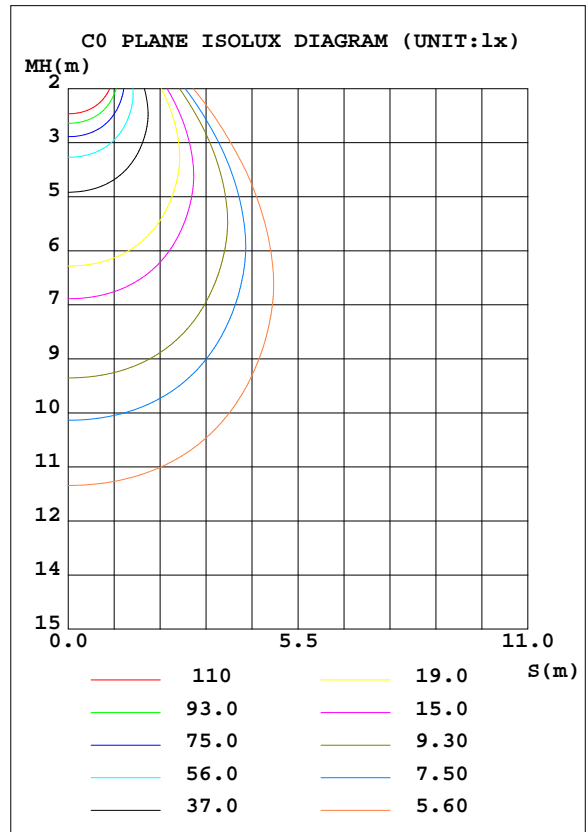
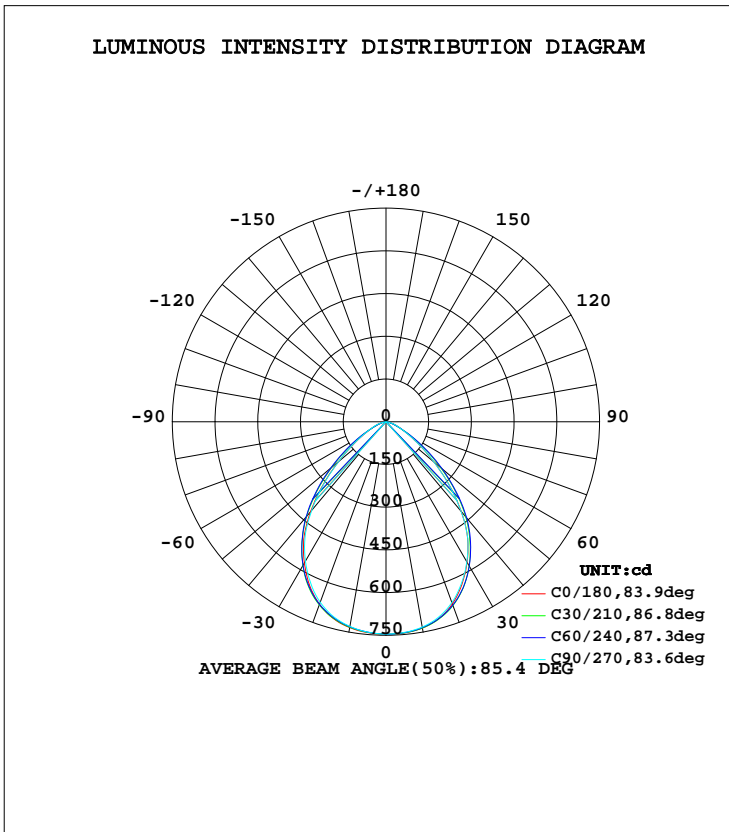
C Range: 0 - 360DEG
 C Interval: 15.0DEG
 Test Speed: HIGH
 Temperature: 25.3DEG
 Operators: Cao Chengpei
 Test Date: 2014-08-29

γ Range: 0 - 90DEG
 γ Interval: 1.0DEG
 Test System: EVERFINE GO-2000B_V1 SYSTEM V2.0.288
 Humidity: 53.0%
 Test Distance: 5.780m [K=1.0000]
 Remarks:

LUMINAIRE PHOTOMETRIC TEST REPORT

Test:U:220.4V I:0.0662A P:13.45W PF:0.9218 Lamp Flux:1365.4lx1 lm		
NAME: CS6R-10S-840	TYPE:Downlight	SERIAL No.:
SPEC.:4000K	DIM.: L169mm*W169mm*H66mm	
MFR.: E-LITE LIGHTING CO.,LTD.		

DATA OF LAMP		PHOTOMETRIC DATA Eff: 101.49 lm/W			
MODEL	SAMSUNG-4000K	Imax(cd)	746.3	S/MH(C0/180)	1.15
NOMINAL POWER(W)	13	LOR(%)	100.0	S/MH(C90/270)	1.15
RATED VOLTAGE(V)	220	TOTAL FLUX(lm)	1365.4	η UP, DN(C0-180)	0.0, 50.1
NOMINAL FLUX(lm)	1365.41	CIE CLASS	DIRECT	η UP, DN(C180-360)	0.0, 49.9
LAMPS INSIDE	1	η up(%)	0.0	CIBSE SHR NOM	1.25
TEST VOLTAGE(V)	220	η down(%)	100.0	CIBSE SHR MAX	1.30



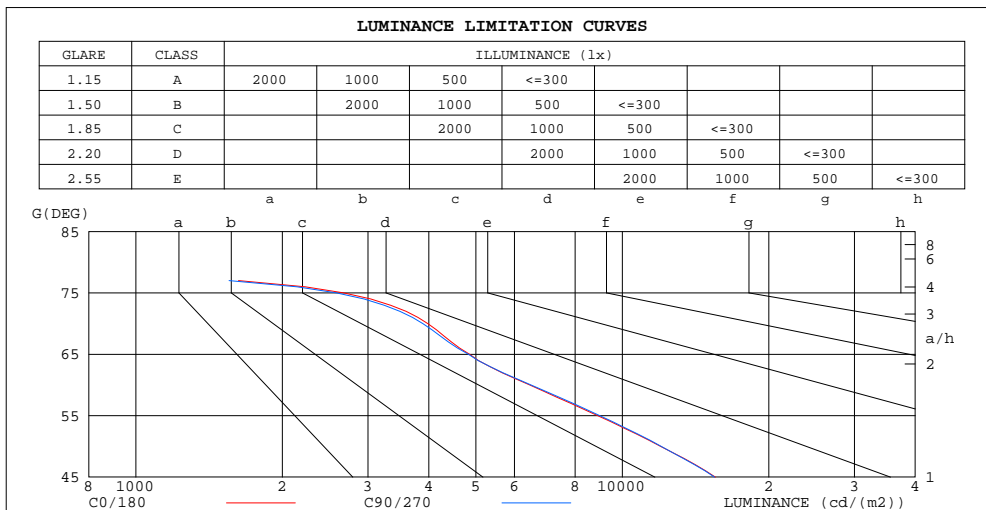
C Range: 0 - 360DEG
 C Interval: 15.0DEG
 Test Speed: HIGH
 Temperature:25.3DEG
 Operators:Cao Chengpei
 Test Date:2014-08-29

γ Range: 0 - 90DEG
 γ Interval: 1.0DEG
 Test System:EVERFINE GO-2000B_V1 SYSTEM V2.0.288
 Humidity:53.0%
 Test Distance:5.780m [K=1.0000]
 Remarks:

**ZONAL FLUX DIAGRAM
AND LUMINANCE LIMITATION CURVES**

ZONAL FLUX DIAGRAM:

γ	C0	C45	C90	C135	C180	C225	C270	C315	γ	Φ zone	Φ total	Φ lum,lamp
10	735.6	735.5	732.1	733.2	734.1	731.5	730.0	732.8	0- 10	70.58	70.58	5.17,5.17
20	680.8	689.2	676.2	687.2	682.5	684.6	675.0	685.6	10- 20	201.0	271.6	19.9,19.9
30	569.6	590.2	568.0	589.7	573.5	586.3	565.8	586.9	20- 30	292.4	564.0	41.3,41.3
40	411.1	443.9	410.1	443.4	411.8	439.0	405.7	440.2	30- 40	316.8	880.8	64.5,64.5
50	220.0	271.3	220.7	269.0	217.8	263.8	216.9	267.3	40- 50	257.2	1138	83.3,83.3
60	92.09	110.4	92.68	108.5	90.37	104.6	92.11	108.8	50- 60	146.9	1285	94.1,94.1
70	38.91	30.42	37.99	29.70	37.80	29.26	38.80	30.79	60- 70	60.24	1345	98.5,98.5
80	2.053	4.380	1.747	4.098	1.896	4.419	2.146	4.684	70- 80	17.95	1363	99.8,99.8
90	0.0832	0.0749	0.0977	0.0749	0.0624	0.0561	0.0665	0.0790	80- 90	2.376	1365	100,100
100									90-100			
110									100-110			
120									110-120			
130									120-130			
140									130-140			
150									140-150			
160									150-160			
170									160-170			
180									170-180			
DEG	LUMINOUS INTENSITY:cd									UNIT:lm		



LUMINANCE cd/(m2)		
G(DEG)	C0/180	C90/270
85	790	673
80	414	352
75	2676	2585
70	3983	3889
65	4851	4824
60	6448	6490
55	8902	8988
50	11986	12022
45	15534	15477

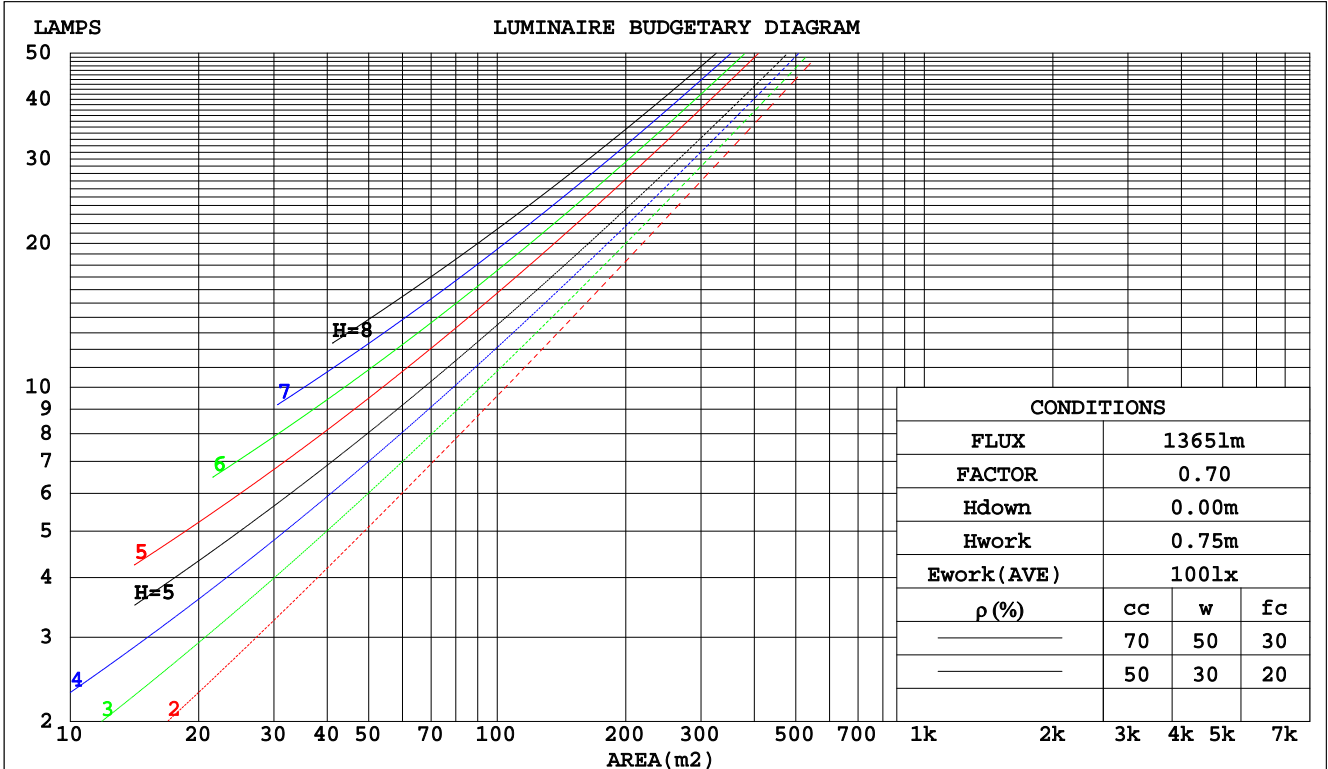
C Range: 0 - 360DEG
 C Interval: 15.0DEG
 Test Speed: HIGH
 Temperature: 25.3DEG
 Operators: Cao Chengpei
 Test Date: 2014-08-29

γ Range: 0 - 90DEG
 γ Interval: 1.0DEG
 Test System: EVERFINE GO-2000B_V1 SYSTEM V2.0.288
 Humidity: 53.0%
 Test Distance: 5.780m [K=1.0000]
 Remarks:

CU AND LUMINAIRE BUDGETARY ESTIMATE DIAGRAM

Test:U:220.4V I:0.0662A P:13.45W PF:0.9218 Lamp Flux:1365.4lx1 lm		
NAME: CS6R-10S-840	TYPE:Downlight	SERIAL No.:
SPEC.:4000K	DIM.: L169mm*W169mm*H66mm	
MFR.: E-LITE LIGHTING CO.,LTD.		

pcc	80%			70%			50%			30%			10%			0
	50%	30%	10%	50%	30%	10%	50%	30%	10%	50%	30%	10%	50%	30%	10%	0
pw																
pfc																
RCR	RCR:Room Cavity Ratio															
	Coefficients of Utilization(CU)															
0.0	1.19	1.19	1.19	1.16	1.16	1.16	1.11	1.11	1.11	1.06	1.06	1.06	1.02	1.02	1.02	1.00
1.0	1.08	1.05	1.02	1.06	1.03	1.00	1.02	.99	.97	.98	.96	.94	.94	.93	.91	.90
2.0	.97	.92	.88	.96	.91	.87	.92	.88	.85	.89	.86	.83	.86	.83	.81	.79
3.0	.88	.81	.76	.86	.80	.75	.84	.78	.74	.81	.77	.73	.79	.75	.72	.70
4.0	.80	.72	.67	.78	.72	.66	.76	.70	.66	.74	.69	.65	.72	.67	.64	.62
5.0	.72	.65	.59	.71	.64	.59	.69	.63	.58	.68	.62	.58	.66	.61	.57	.55
6.0	.66	.58	.53	.65	.58	.53	.64	.57	.52	.62	.56	.52	.61	.55	.52	.50
7.0	.61	.53	.48	.60	.53	.48	.59	.52	.47	.57	.51	.47	.56	.51	.47	.45
8.0	.56	.48	.43	.55	.48	.43	.54	.48	.43	.53	.47	.43	.52	.46	.42	.41
9.0	.52	.44	.39	.51	.44	.39	.50	.44	.39	.49	.43	.39	.48	.43	.39	.37
10.0	.48	.41	.36	.48	.41	.36	.47	.40	.36	.46	.40	.36	.45	.40	.36	.34



C Range: 0 - 360DEG
 C Interval: 15.0DEG
 Test Speed: HIGH
 Temperature:25.3DEG
 Operators:Cao Chengpei
 Test Date:2014-08-29

γ Range: 0 - 90DEG
 γ Interval: 1.0DEG
 Test System:EVERFINE GO-2000B_V1 SYSTEM V2.0.288
 Humidity:53.0%
 Test Distance:5.780m [K=1.0000]
 Remarks:

WEC AND CCEC

Test:U:220.4V I:0.0662A P:13.45W PF:0.9218 Lamp Flux:1365.4lx1 lm		
NAME: CS6R-10S-840	TYPE:Downlight	SERIAL No.:
SPEC.:4000K	DIM.: L169mm*W169mm*H66mm	
MFR.: E-LITE LIGHTING CO.,LTD.		

ρcc	80%			70%			50%			30%			10%			0
ρw	50%	30%	10%	50%	30%	10%	50%	30%	10%	50%	30%	10%	50%	30%	10%	0
ρfc	20%			20%			20%			20%			20%			0
RCR	RCR:Room Cavity Ratio						Wall Exitance Coefficients(WEC)									
0.0																
1.0	.231	.131	.042	.224	.128	.041	.211	.121	.039	.199	.115	.037	.189	.109	.035	
2.0	.226	.124	.038	.220	.121	.037	.209	.116	.036	.198	.111	.035	.189	.107	.034	
3.0	.215	.115	.034	.210	.113	.034	.201	.109	.033	.192	.105	.032	.183	.101	.031	
4.0	.204	.106	.031	.200	.104	.031	.191	.101	.030	.183	.098	.030	.176	.096	.029	
5.0	.193	.098	.028	.189	.097	.028	.181	.094	.028	.174	.092	.027	.168	.090	.027	
6.0	.182	.091	.026	.179	.090	.026	.172	.088	.026	.166	.086	.025	.160	.084	.025	
7.0	.172	.085	.024	.169	.084	.024	.163	.083	.024	.158	.081	.024	.152	.079	.023	
8.0	.163	.080	.022	.160	.079	.022	.155	.077	.022	.150	.076	.022	.145	.075	.022	
9.0	.155	.075	.021	.152	.074	.021	.147	.073	.021	.143	.072	.021	.139	.070	.020	
10.0	.147	.071	.020	.145	.070	.020	.140	.069	.019	.136	.068	.019	.132	.067	.019	

ρcc	80%			70%			50%			30%			10%			0
ρw	50%	30%	10%	50%	30%	10%	50%	30%	10%	50%	30%	10%	50%	30%	10%	0
ρfc	20%			20%			20%			20%			20%			0
RCR	RCR:Room Cavity Ratio						Ceiling Cavity Exitance Coefficients(CCEC)									
0.0	.190	.190	.190	.163	.163	.163	.111	.111	.111	.064	.064	.064	.020	.020	.020	
1.0	.175	.157	.141	.150	.135	.121	.102	.093	.084	.059	.054	.049	.019	.017	.016	
2.0	.163	.132	.106	.140	.114	.092	.096	.079	.064	.055	.046	.037	.018	.015	.012	
3.0	.154	.114	.082	.132	.098	.071	.091	.068	.050	.052	.040	.029	.017	.013	.010	
4.0	.146	.100	.065	.125	.086	.056	.086	.060	.040	.050	.035	.024	.016	.011	.008	
5.0	.138	.089	.053	.119	.077	.046	.082	.054	.032	.047	.032	.019	.015	.010	.006	
6.0	.132	.080	.044	.113	.070	.038	.078	.049	.027	.045	.029	.016	.015	.009	.005	
7.0	.125	.073	.037	.108	.064	.032	.075	.045	.023	.043	.026	.014	.014	.009	.004	
8.0	.120	.067	.032	.103	.059	.028	.071	.041	.020	.041	.024	.012	.013	.008	.004	
9.0	.114	.062	.027	.099	.054	.024	.068	.038	.017	.040	.023	.010	.013	.007	.003	
10.0	.109	.058	.024	.094	.051	.021	.065	.036	.015	.038	.021	.009	.012	.007	.003	

C Range: 0 - 360DEG
 C Interval: 15.0DEG
 Test Speed: HIGH
 Temperature:25.3DEG
 Operators:Cao Chengpei
 Test Date:2014-08-29

γ Range: 0 - 90DEG
 γ Interval: 1.0DEG
 Test System:EVERFINE GO-2000B_V1 SYSTEM V2.0.288
 Humidity:53.0%
 Test Distance:5.780m [K=1.0000]
 Remarks:

UGR(Unified Glare Rating) Table

Test:U:220.4V I:0.0662A P:13.45W PF:0.9218 Lamp Flux:1365.4lx1 lm		
NAME: CS6R-10S-840	TYPE:Downlight	SERIAL No.:
SPEC.:4000K	DIM.: L169mm*W169mm*H66mm	
MFR.: E-LITE LIGHTING CO.,LTD.		

ceiling/cavity	0.7	0.7	0.5	0.5	0.3	0.7	0.7	0.5	0.5	0.3
walls	0.5	0.3	0.5	0.3	0.3	0.5	0.3	0.5	0.3	0.3
working plane	0.2	0.2	0.2	0.2	0.2	0.2	0.2	0.2	0.2	0.2
Room dimensions	Viewed crosswise					Viewed endwise				
x = 2H y = 2H	20.1	21.3	20.3	21.5	21.7	20.2	21.4	20.4	21.6	21.8
3H	20.2	21.4	20.5	21.6	21.8	20.3	21.5	20.6	21.7	21.9
4H	20.3	21.4	20.6	21.6	21.8	20.3	21.4	20.6	21.7	21.9
6H	20.2	21.2	20.5	21.5	21.7	20.2	21.3	20.6	21.5	21.8
8H	20.1	21.1	20.5	21.4	21.7	20.2	21.2	20.5	21.5	21.7
12H	20.1	21.0	20.4	21.3	21.6	20.2	21.1	20.5	21.4	21.7
4H 2H	20.1	21.2	20.4	21.5	21.7	20.2	21.3	20.5	21.6	21.8
3H	20.4	21.3	20.7	21.6	21.9	20.4	21.4	20.8	21.7	22.0
4H	20.4	21.3	20.8	21.6	21.9	20.5	21.3	20.8	21.7	22.0
6H	20.4	21.1	20.8	21.5	21.8	20.4	21.2	20.8	21.5	21.9
8H	20.3	21.0	20.7	21.4	21.8	20.4	21.1	20.8	21.4	21.8
12H	20.3	20.9	20.7	21.3	21.7	20.3	21.0	20.8	21.3	21.7
8H 4H	20.4	21.1	20.8	21.4	21.8	20.4	21.1	20.8	21.5	21.8
6H	20.3	20.9	20.7	21.3	21.7	20.3	20.9	20.8	21.3	21.7
8H	20.3	20.8	20.7	21.2	21.6	20.3	20.8	20.8	21.2	21.7
12H	20.2	20.6	20.7	21.1	21.6	20.3	20.7	20.7	21.1	21.6
12H 4H	20.3	20.9	20.7	21.3	21.7	20.4	21.0	20.8	21.4	21.8
6H	20.3	20.8	20.7	21.2	21.6	20.3	20.8	20.7	21.2	21.7
8H	20.2	20.6	20.7	21.1	21.6	20.3	20.7	20.7	21.1	21.6
Variations with the observer position at spacings:										
S = 1.0H	+ 1.2 / - 1.8					+ 1.2 / - 1.8				
1.5H	+ 0.6 / - 1.1					+ 0.6 / - 1.1				
2.0H	+ 2.2 / - 2.8					+ 2.2 / - 2.8				

CIE Pub.117 Corrected 1365 lm Total Lamp Luminous Flux.(8log(F/F0) = 1.1)

C Range: 0 - 360DEG
 C Interval: 15.0DEG
 Test Speed: HIGH
 Temperature:25.3DEG
 Operators:Cao Chengpei
 Test Date:2014-08-29

γ Range: 0 - 90DEG
 γ Interval: 1.0DEG
 Test System:EVERFINE GO-2000B_V1 SYSTEM V2.0.288
 Humidity:53.0%
 Test Distance:5.780m [K=1.0000]
 Remarks:

UTILIZATION FACTORS TABLE

Test:U:220.4V I:0.0662A P:13.45W PF:0.9218 Lamp Flux:1365.4lx1 lm		
NAME: CS6R-10S-840	TYPE:Downlight	SERIAL No.:
SPEC.:4000K	DIM.: L169mm*W169mm*H66mm	
MFR.: E-LITE LIGHTING CO.,LTD.		

REFLECTANCE										
Ceiling	0.8	0.8	0.8	0.7	0.7	0.7	0.5	0.5	0.5	0
Walls	0.7	0.5	0.3	0.7	0.5	0.3	0.7	0.5	0.3	0
Working plane	0.2	0.2	0.2	0.2	0.2	0.2	0.2	0.2	0.2	0
ROOM INDEX	UTILIZATION FACTORS(PERCENT) $k(RI) \times RCR = 5$									
k = 0.60	69	59	54	68	59	53	67	59	53	48
0.80	79	70	64	78	69	64	76	69	63	58
1.00	87	78	72	86	78	72	84	78	72	66
1.25	93	85	80	92	84	79	89	83	78	73
1.50	97	90	85	96	89	84	93	87	83	77
2.00	102	96	91	101	95	91	98	93	89	83
2.50	105	99	95	103	98	94	100	96	92	85
3.00	107	102	98	105	101	97	102	98	95	88
4.00	110	106	103	108	104	101	104	101	99	91
5.00	112	108	105	110	107	104	105	103	101	92
ROOM INDEX	UF(total)									Direct
According to DIN EN 13032-2 2004			Suspended				SHRNOM = 1.25			

C Range: 0 - 360DEG
 C Interval: 15.0DEG
 Test Speed: HIGH
 Temperature:25.3DEG
 Operators:Cao Chengpei
 Test Date:2014-08-29

γ Range: 0 - 90DEG
 γ Interval: 1.0DEG
 Test System:EVERFINE GO-2000B_V1 SYSTEM V2.0.288
 Humidity:53.0%
 Test Distance:5.780m [K=1.0000]
 Remarks:

ISOCANDELA DIAGRAM

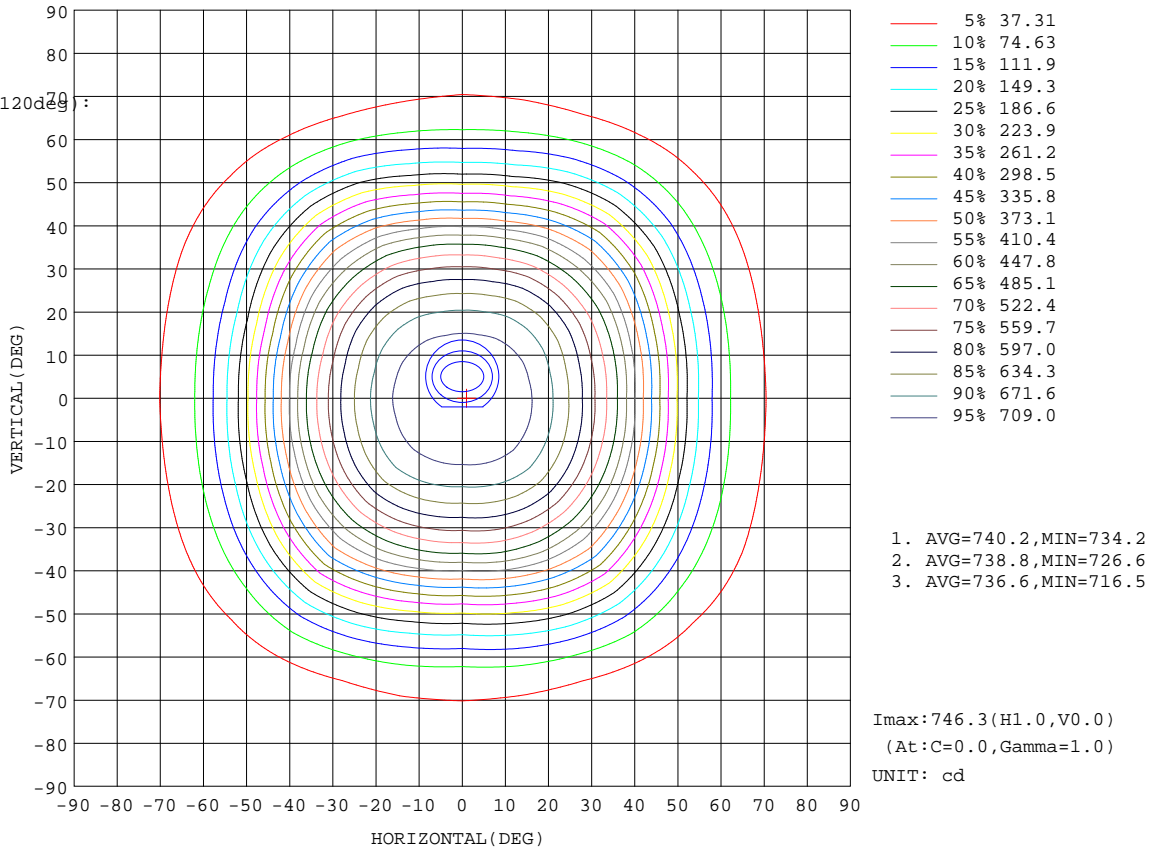
Test:U:220.4V I:0.0662A P:13.45W PF:0.9218 Lamp Flux:1365.4lx1 lm		
NAME: CS6R-10S-840	TYPE:Downlight	SERIAL No.:
SPEC.:4000K	DIM.: L169mm*W169mm*H66mm	
MFR.: E-LITE LIGHTING CO.,LTD.		

Conical surface Flux(90deg):

1021.8 lm
%lum = 74.8%
%lamp = 74.8%

Conical surface Flux(120deg):

1284.8 lm
%lum = 94.1%
%lamp = 94.1%

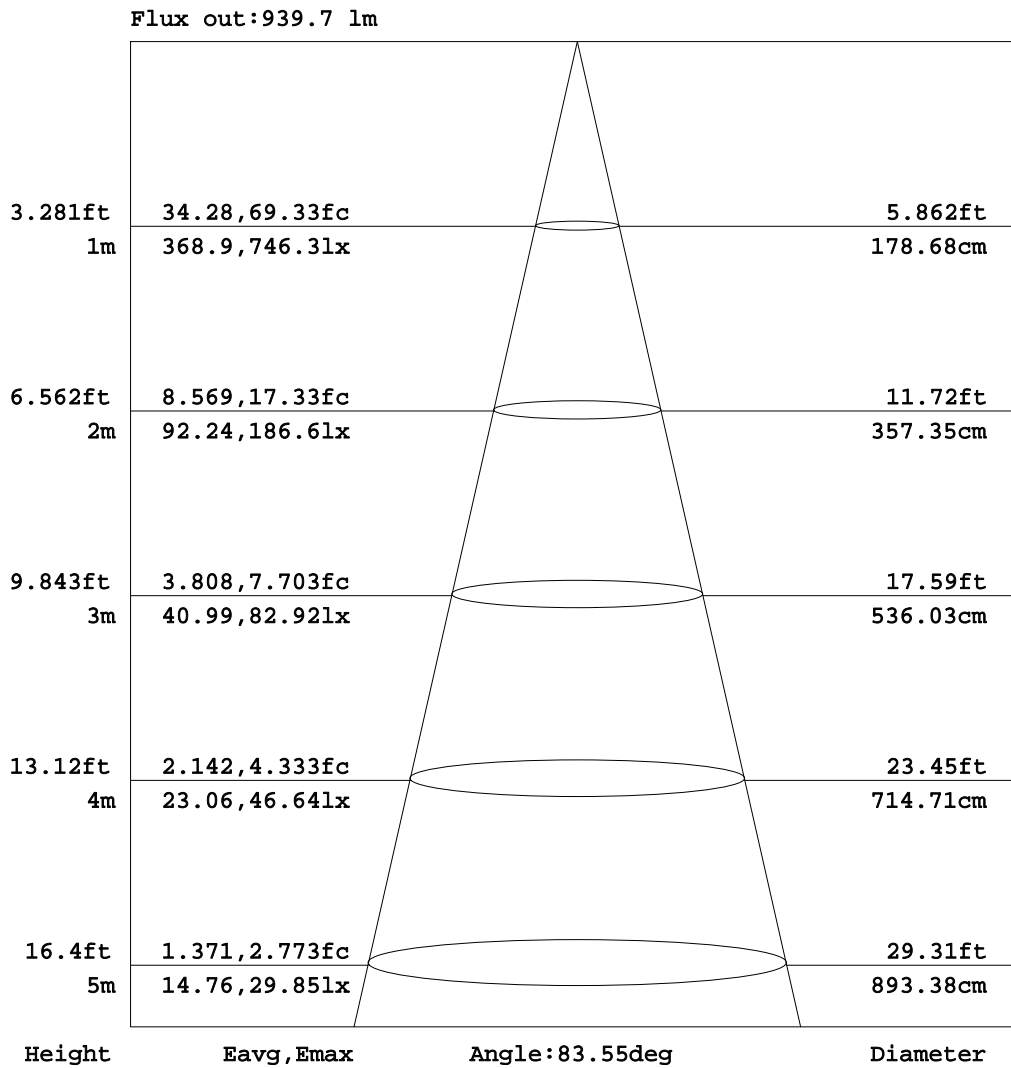


C Range: 0 - 360DEG
C Interval: 15.0DEG
Test Speed: HIGH
Temperature:25.3DEG
Operators:Cao Chengpei
Test Date:2014-08-29

γ Range: 0 - 90DEG
γ Interval: 1.0DEG
Test System:EVERFINE GO-2000B_V1 SYSTEM V2.0.288
Humidity:53.0%
Test Distance:5.780m [K=1.0000]
Remarks:

AAI Figure

Test:U:220.4V I:0.0662A P:13.45W PF:0.9218 Lamp Flux:1365.4lx1 lm		
NAME: CS6R-10S-840	TYPE:Downlight	SERIAL No.:
SPEC.:4000K	DIM.: L169mm*W169mm*H66mm	
MFR.: E-LITE LIGHTING CO.,LTD.		



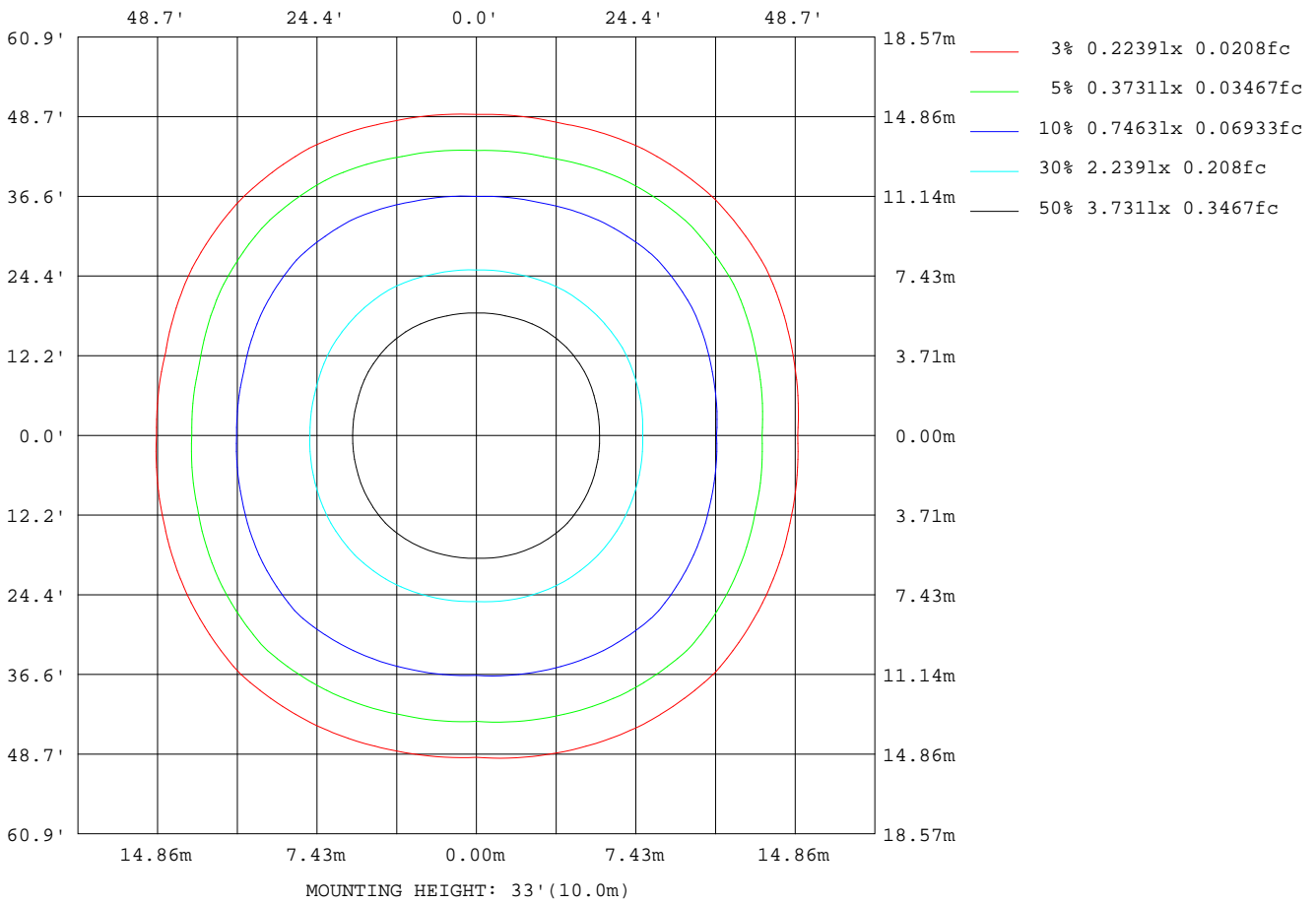
Note:The Curves indicate the illuminated area and the average illumination when the luminaire is at different distance.

C Range: 0 - 360DEG
C Interval: 15.0DEG
Test Speed: HIGH
Temperature:25.3DEG
Operators:Cao Chengpei
Test Date:2014-08-29

γ Range: 0 - 90DEG
γ Interval: 1.0DEG
Test System:EVERFINE GO-2000B_V1 SYSTEM V2.0.288
Humidity:53.0%
Test Distance:5.780m [K=1.0000]
Remarks:

ISOLUX DIAGRAM

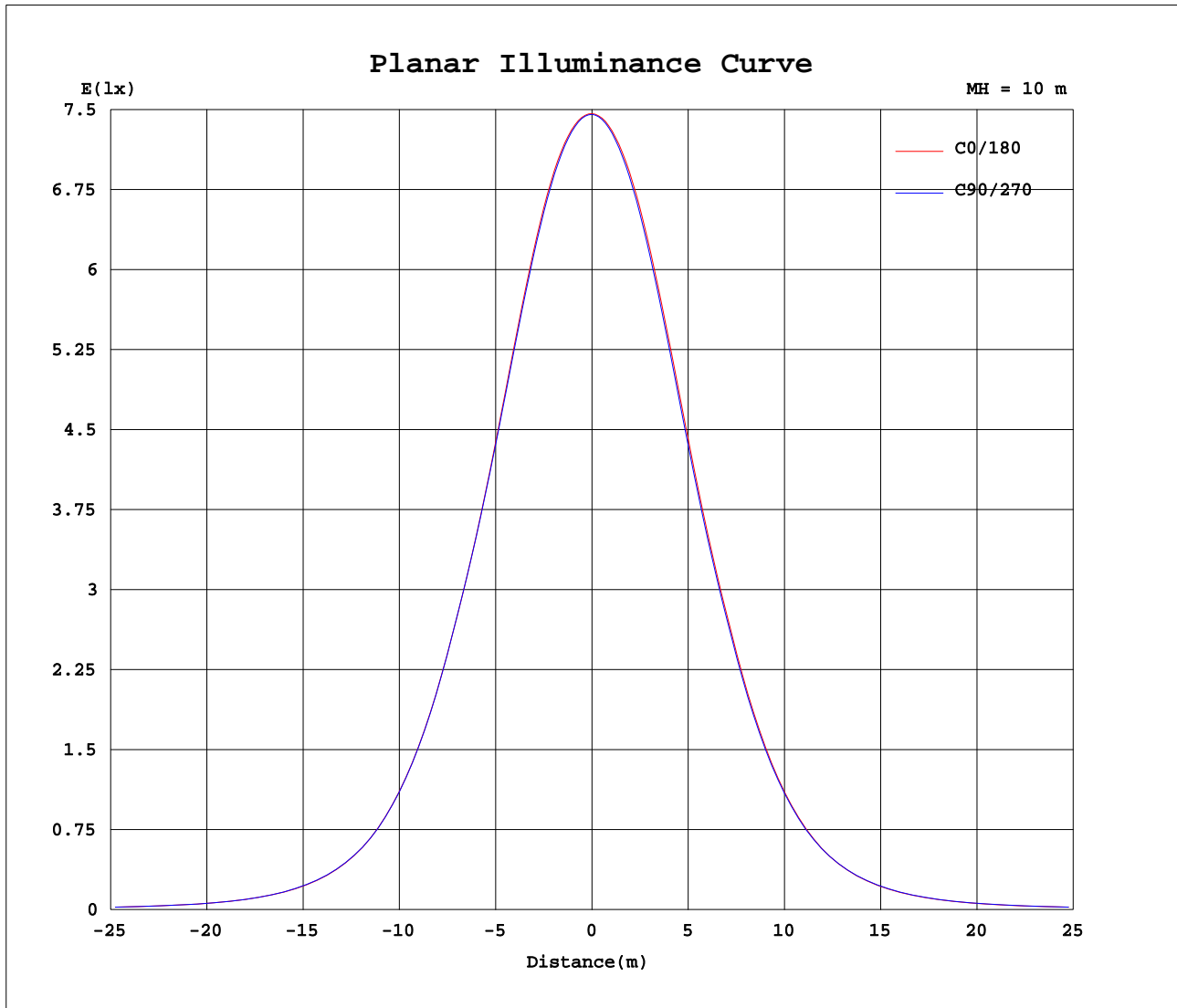
Test:U:220.4V I:0.0662A P:13.45W PF:0.9218 Lamp Flux:1365.4lx1 lm		
NAME: CS6R-10S-840	TYPE:Downlight	SERIAL No.:
SPEC.:4000K	DIM.: L169mm*W169mm*H66mm	
MFR.: E-LITE LIGHTING CO.,LTD.		



C Range: 0 - 360DEG
 C Interval: 15.0DEG
 Test Speed: HIGH
 Temperature:25.3DEG
 Operators:Cao Chengpei
 Test Date:2014-08-29

γ Range: 0 - 90DEG
 γ Interval: 1.0DEG
 Test System:EVERFINE GO-2000B_V1 SYSTEM V2.0.288
 Humidity:53.0%
 Test Distance:5.780m [K=1.0000]
 Remarks:

Planar Illuminance Curve



C Range: 0 - 360DEG
 C Interval: 15.0DEG
 Test Speed: HIGH
 Temperature: 25.3DEG
 Operators: Cao Chengpei
 Test Date: 2014-08-29

γ Range: 0 - 90DEG
 γ Interval: 1.0DEG
 Test System: EVERFINE GO-2000B_V1 SYSTEM V2.0.288
 Humidity: 53.0%
 Test Distance: 5.780m [K=1.0000]
 Remarks:

Photometric Data Table [cd]

G/C	0.0	15.0	30.0	45.0	60.0	75.0	90.0	105.0	120.0	135.0
0.0	746.3	745.9	745.7	745.5	745.5	745.5	745.5	745.5	745.3	745.0
3.0	745.7	745.7	745.4	745.2	745.1	744.9	744.7	744.7	744.4	744.1
6.0	743.3	743.4	743.0	742.7	742.1	741.7	741.4	741.4	741.0	741.1
9.0	738.1	738.4	738.0	737.7	736.7	736.0	735.0	735.2	735.1	735.5
12.0	729.3	729.7	729.7	729.8	728.0	726.6	725.2	725.7	726.2	727.3
15.0	715.7	716.8	717.5	718.1	715.8	713.4	711.0	712.1	713.5	715.5
18.0	696.6	698.7	700.7	702.2	699.1	695.3	691.9	693.9	696.8	699.9
21.0	671.9	675.2	679.0	681.8	677.9	672.2	667.4	670.5	675.5	680.0
24.0	641.7	646.4	652.6	656.7	651.9	644.2	637.7	642.0	649.2	655.2
27.0	607.0	612.9	620.6	626.0	620.9	612.0	604.3	609.4	618.0	625.2
30.0	569.6	575.5	583.9	590.2	585.2	576.7	568.0	573.3	582.7	589.7
33.0	529.0	534.7	543.0	549.0	545.4	538.2	528.9	533.7	542.9	549.1
36.0	484.4	491.1	499.1	505.1	502.8	496.6	484.1	490.7	499.4	505.3
39.0	430.2	439.7	452.7	459.4	457.5	444.6	429.4	439.2	453.0	459.2
42.0	372.5	383.2	400.1	412.3	404.7	387.9	371.2	381.9	400.4	411.4
45.0	313.7	325.2	344.4	363.1	349.3	330.0	312.6	323.8	343.3	361.8
48.0	256.2	267.8	288.5	307.9	293.7	272.7	255.3	266.6	287.1	306.2
51.0	203.7	213.5	234.4	253.0	239.9	219.4	204.7	213.7	233.3	250.3
54.0	159.1	167.6	184.1	199.8	189.6	173.4	160.5	168.4	184.4	197.1
57.0	121.9	129.3	140.3	151.0	144.9	133.8	123.2	130.0	140.9	149.1
60.0	92.09	97.42	103.0	110.4	106.2	100.6	92.68	97.80	103.8	108.5
63.0	69.21	72.23	72.89	77.73	74.37	73.39	69.28	72.31	73.50	76.27
66.0	53.81	53.75	50.28	52.74	51.23	53.53	53.26	53.49	50.46	51.62
69.0	42.43	40.66	35.46	34.97	35.21	39.41	41.54	40.14	35.02	34.17
72.0	31.71	29.91	25.18	23.07	24.11	28.25	30.79	29.23	24.52	22.42
75.0	19.78	19.37	16.13	14.64	15.21	18.12	19.11	18.62	15.47	14.15
78.0	4.700	6.467	7.214	7.856	7.223	6.732	4.623	5.916	6.685	7.478
81.0	2.030	2.321	2.711	3.164	2.704	2.191	1.728	2.040	2.515	2.982
84.0	1.980	2.233	2.474	2.611	2.438	2.058	1.685	1.965	2.293	2.526
87.0	1.949	2.100	2.235	2.288	2.164	1.919	1.658	1.856	2.091	2.241
90.0	0.0832	0.0749	0.1040	0.0749	0.1206	0.1144	0.0977	0.1040	0.1206	0.0749
G/C	150.0	165.0	180.0	195.0	210.0	225.0	240.0	255.0	270.0	285.0
0.0	744.7	744.3	746.3	745.9	745.7	745.5	745.5	745.5	745.5	745.5
3.0	743.6	743.1	745.0	744.6	744.3	744.0	744.0	743.7	743.8	743.9
6.0	740.4	740.0	742.0	741.1	740.8	740.3	739.9	739.6	739.8	739.8
9.0	735.1	734.8	736.5	735.6	735.2	734.1	733.5	732.7	732.9	733.2
12.0	726.9	726.5	728.1	726.9	726.6	725.3	724.5	722.9	723.0	723.6
15.0	715.1	714.2	715.2	714.1	714.6	713.3	712.1	709.1	709.1	710.0
18.0	699.1	697.1	697.4	696.4	698.1	697.4	695.7	691.3	690.5	692.0
21.0	678.1	674.6	674.1	673.4	677.2	677.4	674.8	668.1	666.4	668.8
24.0	652.1	646.7	645.2	645.1	651.3	652.6	649.1	640.0	637.1	640.4
27.0	621.1	614.1	611.3	611.7	620.0	622.3	618.2	607.2	603.0	607.1
30.0	585.0	577.2	573.5	574.1	583.6	586.3	582.7	570.5	565.8	569.7
33.0	544.0	536.9	532.7	532.7	542.9	545.2	542.9	530.8	525.3	529.0
36.0	500.1	493.6	487.2	487.8	498.5	500.8	499.7	487.5	479.9	484.6
39.0	454.5	441.0	431.3	434.3	451.0	454.8	453.7	435.1	424.8	431.8
42.0	402.0	383.3	372.0	376.0	397.7	407.0	401.4	378.4	366.6	374.2
45.0	345.7	324.3	312.1	316.8	340.9	356.5	346.2	320.6	308.5	316.1
48.0	289.3	266.7	254.6	259.7	284.5	301.0	290.4	264.5	251.7	259.8
51.0	235.1	212.0	200.8	206.1	230.3	245.5	236.8	211.8	201.0	207.7
54.0	183.8	165.6	156.3	160.3	180.5	192.5	186.5	166.8	157.7	162.9
57.0	138.7	127.1	120.0	122.7	136.9	144.9	142.1	128.6	121.9	125.7
60.0	100.7	94.87	90.37	92.27	100.7	104.6	104.3	96.50	92.11	94.98
63.0	70.35	69.38	68.06	68.65	71.65	73.57	73.42	70.68	69.68	71.10
66.0	48.81	50.89	52.58	51.48	49.43	50.08	50.60	52.04	53.83	53.34
69.0	33.90	37.82	41.27	39.04	34.90	33.48	34.96	38.75	42.31	40.41
72.0	23.42	27.17	30.79	28.59	24.81	22.35	24.12	27.92	31.65	29.64
75.0	14.77	17.41	19.37	18.26	15.98	14.26	15.40	17.91	20.05	19.00
78.0	6.961	6.297	5.334	5.919	7.435	7.747	7.640	6.648	5.557	6.210
81.0	2.697	2.304	1.876	2.231	2.817	3.317	3.025	2.585	2.125	2.462
84.0	2.444	2.177	1.838	2.161	2.561	2.800	2.742	2.432	2.073	2.367
87.0	2.201	2.044	1.794	2.012	2.288	2.459	2.454	2.269	2.025	2.221
90.0	0.0749	0.0728	0.0624	0.0749	0.0603	0.0561	0.0686	0.0977	0.0665	0.1061
G/C	300.0	315.0	330.0	345.0						
0.0	745.3	745.0	744.7	744.3						
3.0	744.2	744.0	744.0	743.7						
6.0	740.4	740.8	741.2	741.1						
9.0	734.4	735.2	736.1	736.0						
12.0	725.6	726.9	727.8	727.4						
15.0	713.2	714.7	715.7	714.4						
18.0	696.8	698.7	699.1	696.5						
21.0	675.9	678.3	677.8	672.9						

C Range: 0 - 360DEG

C Interval: 15.0DEG

Test Speed: HIGH

Temperature: 25.3DEG

Operators: Cao Chengpei

Test Date: 2014-08-29

γ Range: 0 - 90DEG

γ Interval: 1.0DEG

Test System: EVERFINE GO-2000B_V1 SYSTEM V2.0.288

Humidity: 53.0%

Test Distance: 5.780m [K=1.0000]

Remarks:

Photometric Data Table [cd]

24.0	650.0	653.2	651.5	644.2
27.0	618.8	622.8	620.1	610.9
30.0	582.5	586.9	584.1	573.9
33.0	541.8	545.9	544.4	534.4
36.0	497.9	501.6	501.9	492.2
39.0	451.0	455.9	456.8	442.4
42.0	397.5	408.4	406.2	386.4
45.0	341.2	358.6	351.8	328.7
48.0	285.0	304.1	296.6	272.2
51.0	231.7	249.1	242.9	217.8
54.0	183.2	196.6	191.6	171.4
57.0	140.3	149.2	146.1	131.9
60.0	104.0	108.8	107.3	98.97
63.0	74.50	77.23	75.67	72.42
66.0	51.61	52.95	52.45	53.35
69.0	36.45	35.37	36.36	39.70
72.0	25.99	23.48	25.18	28.73
75.0	16.89	15.00	16.18	18.62
78.0	7.916	8.174	8.005	7.068
81.0	3.012	3.495	3.104	2.569
84.0	2.750	2.935	2.790	2.402
87.0	2.461	2.557	2.475	2.226
90.0	0.1102	0.0790	0.0707	0.1352

C Range: 0 - 360DEG
 C Interval: 15.0DEG
 Test Speed: HIGH
 Temperature: 25.3DEG
 Operators: Cao Chengpei
 Test Date: 2014-08-29

γ Range: 0 - 90DEG
 γ Interval: 1.0DEG
 Test System: EVERFINE GO-2000B_V1 SYSTEM V2.0.288
 Humidity: 53.0%
 Test Distance: 5.780m [K=1.0000]
 Remarks: