

LED Downlight CATO Series CS6R-10S-830



Light Output Ratio:	100.0%	
Luminaire Power:	13.45 W	
SHR Nominal:	1.25	Calculated using the TM5
SHR Maximum:	1.30	fine grid method.

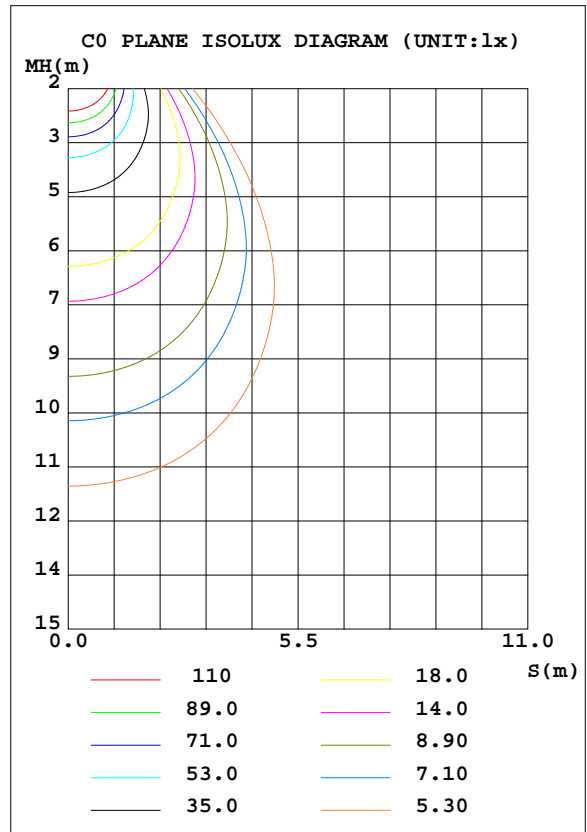
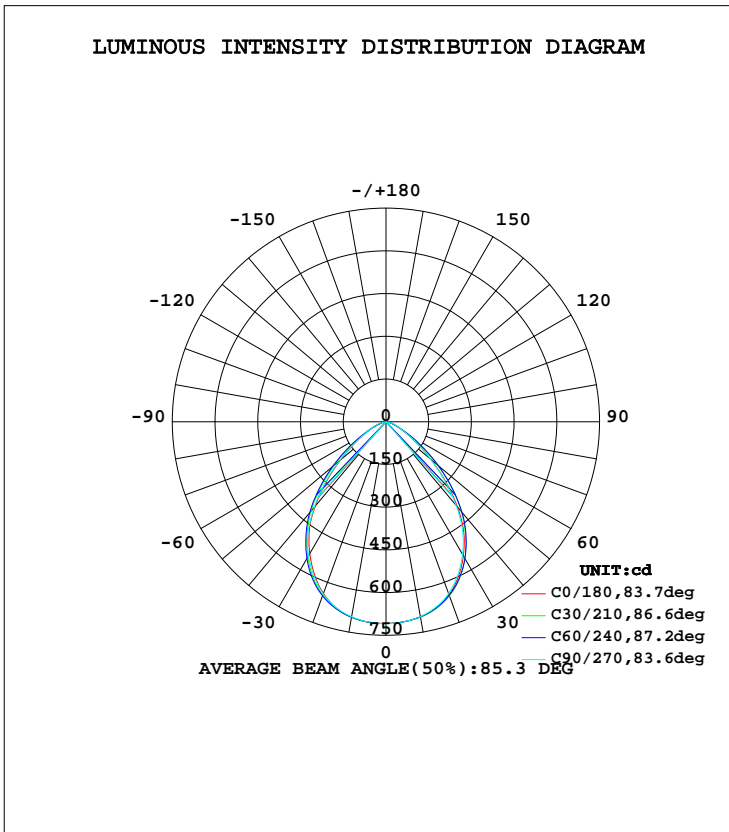
C Range: 0 - 360DEG  
 C Interval: 15.0DEG  
 Test Speed: HIGH  
 Temperature: 25.3DEG  
 Operators: Cao Chengpei  
 Test Date: 2014-08-29

$\gamma$  Range: 0 - 90DEG  
 $\gamma$  Interval: 1.0DEG  
 Test System: EVERFINE GO-2000B\_V1 SYSTEM V2.0.288  
 Humidity: 53.0%  
 Test Distance: 5.780m [K=1.0000]  
 Remarks:

LUMINAIRE PHOTOMETRIC TEST REPORT

Test:U:220.4V I:0.0662A P:13.45W PF:0.9216 Lamp Flux:1294.64x1 lm		
NAME: CS6R-10S-830	TYPE:Downlight	SERIAL No.:
SPEC.:3000K	DIM.: L169mm*W169mm*H66mm	
MFR.: E-LITE LIGHTING CO.,LTD.		

DATA OF LAMP		PHOTOMETRIC DATA Eff: 96.25 lm/W			
MODEL	SAMSUNG-3000K	Imax(cd)	709.1	S/MH(C0/180)	1.14
NOMINAL POWER(W)	13	LOR(%)	100.0	S/MH(C90/270)	1.15
RATED VOLTAGE(V)	220	TOTAL FLUX(lm)	1294.6	η UP, DN(C0-180)	0.0, 49.9
NOMINAL FLUX(lm)	1294.64	CIE CLASS	DIRECT	η UP, DN(C180-360)	0.0, 50.1
LAMPS INSIDE	1	η up(%)	0.0	CIBSE SHR NOM	1.25
TEST VOLTAGE(V)	220	η down(%)	100.0	CIBSE SHR MAX	1.30



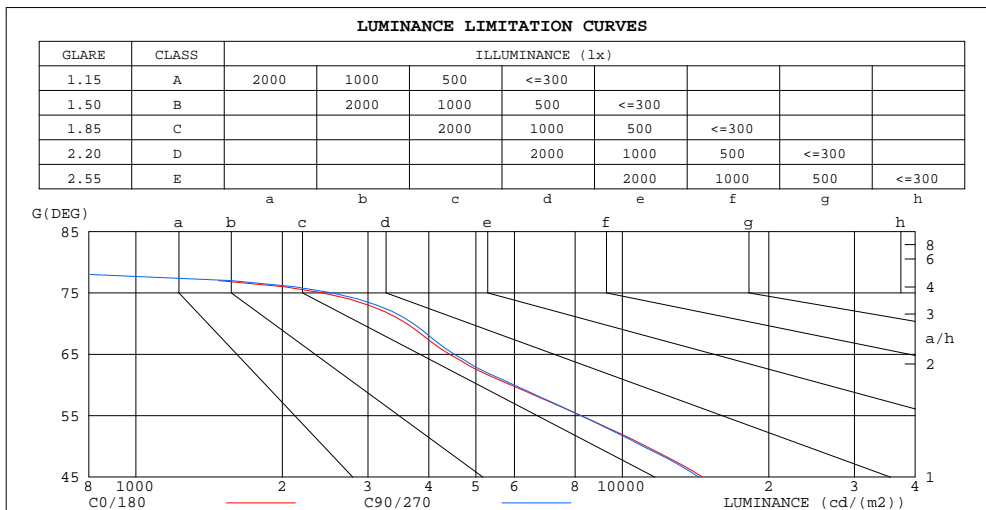
C Range: 0 - 360DEG  
 C Interval: 15.0DEG  
 Test Speed: HIGH  
 Temperature:25.3DEG  
 Operators:Cao Chengpei  
 Test Date:2014-08-29

γ Range: 0 - 90DEG  
 γ Interval: 1.0DEG  
 Test System:EVERFINE GO-2000B\_V1 SYSTEM V2.0.288  
 Humidity:53.0%  
 Test Distance:5.780m [K=1.0000]  
 Remarks:

**ZONAL FLUX DIAGRAM  
AND LUMINANCE LIMITATION CURVES**

**ZONAL FLUX DIAGRAM:**

$\gamma$	C0	C45	C90	C135	C180	C225	C270	C315	$\gamma$	$\Phi$ zone	$\Phi$ total	$\%lum, lamp$
10	696.4	696.2	694.5	696.9	697.0	697.1	695.5	696.1	0- 10	67.07	67.07	5.18,5.18
20	646.9	652.0	642.2	651.0	642.0	650.8	643.9	651.3	10- 20	190.8	257.9	19.9,19.9
30	543.7	560.2	538.1	556.1	535.1	554.6	544.0	558.4	20- 30	277.3	535.2	41.3,41.3
40	390.5	421.6	382.7	415.5	386.9	415.5	392.3	423.2	30- 40	300.4	835.6	64.5,64.5
50	205.4	254.7	202.7	251.6	208.2	252.5	212.0	258.0	40- 50	243.6	1079	83.4,83.4
60	84.20	101.9	85.51	102.7	87.72	102.5	88.95	104.1	50- 60	139.2	1218	94.1,94.1
70	35.20	28.38	36.32	28.81	36.64	28.16	36.52	28.48	60- 70	57.08	1275	98.5,98.5
80	1.832	4.536	2.059	4.335	1.786	3.807	1.626	4.102	70- 80	16.97	1292	99.8,99.8
90	0.1102	0.1768	0.1851	0.0707	0.0416	0.0520	0.0894	0.1976	80- 90	2.227	1295	100,100
100									90-100			
110									100-110			
120									110-120			
130									120-130			
140									130-140			
150									140-150			
160									150-160			
170									160-170			
180									170-180			
DEG	LUMINOUS INTENSITY:cd									UNIT:lm		



LUMINANCE cd/(m2)		
G(DEG)	C0/180	C90/270
85	702	795
80	369	415
75	2421	2532
70	3603	3718
65	4410	4512
60	5896	5988
55	8227	8219
50	11191	11039
45	14610	14356

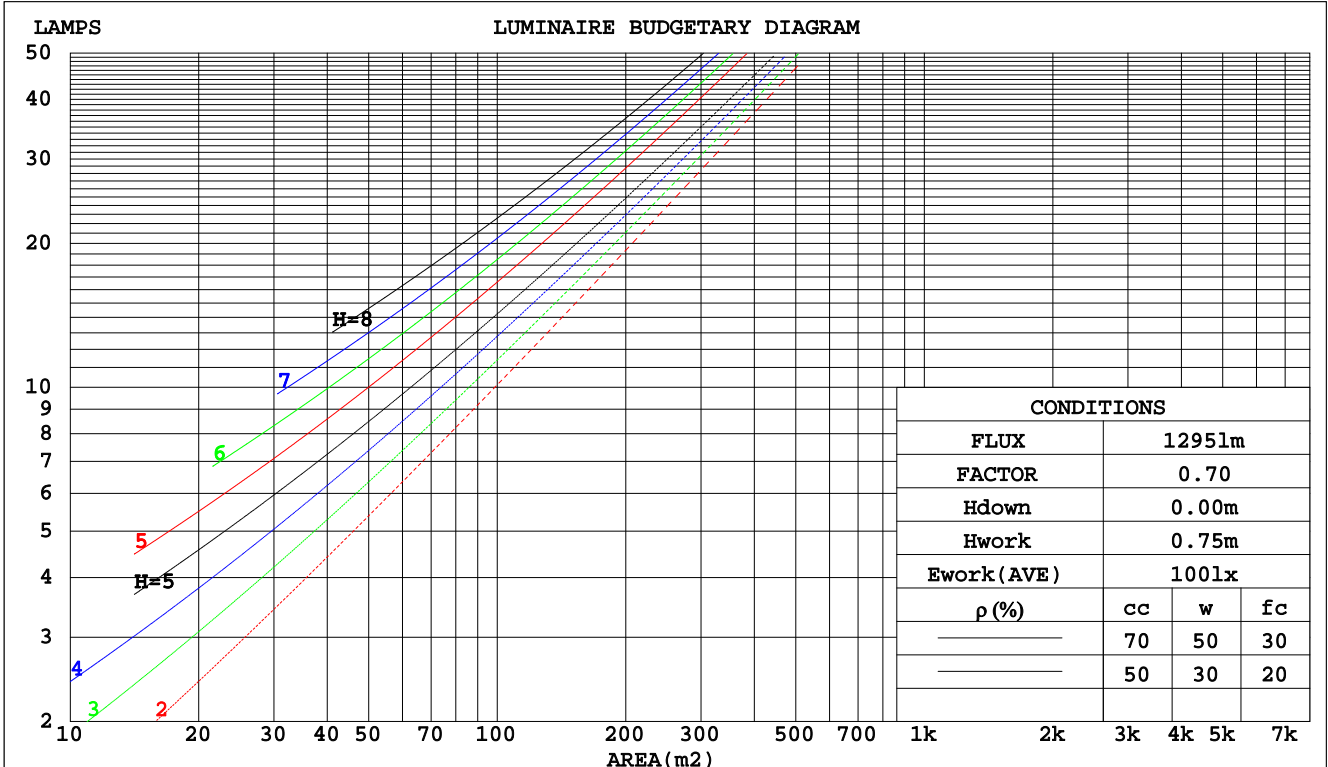
C Range: 0 - 360DEG  
 C Interval: 15.0DEG  
 Test Speed: HIGH  
 Temperature:25.3DEG  
 Operators:Cao Chengpei  
 Test Date:2014-08-29

$\gamma$  Range: 0 - 90DEG  
 $\gamma$  Interval: 1.0DEG  
 Test System:EVERFINE GO-2000B\_V1 SYSTEM V2.0.288  
 Humidity:53.0%  
 Test Distance:5.780m [K=1.0000]  
 Remarks:

CU AND LUMINAIRE BUDGETARY ESTIMATE DIAGRAM

Test:U:220.4V I:0.0662A P:13.45W PF:0.9216 Lamp Flux:1294.64x1 lm		
NAME: CS6R-10S-830	TYPE:Downlight	SERIAL No.:
SPEC.:3000K	DIM.: L169mm*W169mm*H66mm	
MFR.: E-LITE LIGHTING CO.,LTD.		

pcc	80%			70%			50%			30%			10%			0
	50%	30%	10%	50%	30%	10%	50%	30%	10%	50%	30%	10%	50%	30%	10%	0
pw																0
pfc																0
RCR	RCR:Room Cavity Ratio      Coefficients of Utilization(CU)															
0.0	1.19	1.19	1.19	1.16	1.16	1.16	1.11	1.11	1.11	1.06	1.06	1.06	1.02	1.02	1.02	.00
1.0	1.08	1.05	1.02	1.06	1.03	1.00	1.02	.99	.97	.98	.96	.94	.94	.93	.91	.90
2.0	.97	.92	.88	.96	.91	.87	.92	.88	.85	.89	.86	.83	.86	.83	.81	.79
3.0	.88	.81	.76	.86	.80	.75	.84	.78	.74	.81	.77	.73	.79	.75	.72	.70
4.0	.80	.72	.67	.78	.72	.66	.76	.70	.66	.74	.69	.65	.72	.68	.64	.62
5.0	.72	.65	.59	.71	.64	.59	.69	.63	.58	.68	.62	.58	.66	.61	.57	.55
6.0	.66	.58	.53	.65	.58	.53	.64	.57	.52	.62	.56	.52	.61	.56	.52	.50
7.0	.61	.53	.48	.60	.53	.48	.59	.52	.47	.57	.51	.47	.56	.51	.47	.45
8.0	.56	.48	.43	.55	.48	.43	.54	.48	.43	.53	.47	.43	.52	.46	.42	.41
9.0	.52	.44	.39	.51	.44	.39	.50	.44	.39	.49	.43	.39	.48	.43	.39	.37
10.0	.48	.41	.36	.48	.41	.36	.47	.40	.36	.46	.40	.36	.45	.40	.36	.34



C Range: 0 - 360DEG  
 C Interval: 15.0DEG  
 Test Speed: HIGH  
 Temperature: 25.3DEG  
 Operators: Cao Chengpei  
 Test Date: 2014-08-29

γ Range: 0 - 90DEG  
 γ Interval: 1.0DEG  
 Test System: EVERFINE GO-2000B\_V1 SYSTEM V2.0.288  
 Humidity: 53.0%  
 Test Distance: 5.780m [K=1.0000]  
 Remarks:

WEC AND CCEC

Test:U:220.4V I:0.0662A P:13.45W PF:0.9216 Lamp Flux:1294.64x1 lm		
NAME: CS6R-10S-830	TYPE:Downlight	SERIAL No.:
SPEC.:3000K	DIM.: L169mm*W169mm*H66mm	
MFR.: E-LITE LIGHTING CO.,LTD.		

ρcc	80%			70%			50%			30%			10%			0
ρw	50%	30%	10%	50%	30%	10%	50%	30%	10%	50%	30%	10%	50%	30%	10%	0
ρfc	20%			20%			20%			20%			20%			0
RCR	RCR:Room Cavity Ratio						Wall Exitance Coefficients(WEC)									
0.0																
1.0	.231	.131	.042	.224	.128	.041	.211	.121	.039	.199	.115	.037	.188	.109	.035	
2.0	.226	.124	.038	.220	.121	.037	.208	.116	.036	.198	.111	.035	.189	.107	.034	
3.0	.215	.115	.034	.210	.113	.034	.201	.109	.033	.192	.105	.032	.183	.101	.031	
4.0	.204	.106	.031	.200	.104	.031	.191	.101	.030	.183	.098	.030	.176	.096	.029	
5.0	.193	.098	.028	.189	.097	.028	.181	.094	.028	.174	.092	.027	.168	.090	.027	
6.0	.182	.091	.026	.179	.090	.026	.172	.088	.026	.166	.086	.025	.160	.084	.025	
7.0	.172	.085	.024	.169	.084	.024	.163	.083	.024	.158	.081	.024	.152	.079	.023	
8.0	.163	.080	.022	.160	.079	.022	.155	.077	.022	.150	.076	.022	.145	.075	.022	
9.0	.155	.075	.021	.152	.074	.021	.147	.073	.021	.143	.072	.020	.139	.070	.020	
10.0	.147	.070	.020	.145	.070	.019	.140	.069	.019	.136	.068	.019	.132	.067	.019	

ρcc	80%			70%			50%			30%			10%			0
ρw	50%	30%	10%	50%	30%	10%	50%	30%	10%	50%	30%	10%	50%	30%	10%	0
ρfc	20%			20%			20%			20%			20%			0
RCR	RCR:Room Cavity Ratio						Ceiling Cavity Exitance Coefficients(CCEC)									
0.0	.190	.190	.190	.163	.163	.163	.111	.111	.111	.064	.064	.064	.020	.020	.020	
1.0	.175	.157	.141	.150	.135	.121	.102	.093	.084	.059	.054	.049	.019	.017	.016	
2.0	.163	.132	.106	.140	.114	.092	.096	.079	.064	.055	.046	.037	.018	.015	.012	
3.0	.154	.114	.082	.132	.098	.071	.091	.068	.050	.052	.040	.029	.017	.013	.010	
4.0	.146	.100	.065	.125	.086	.056	.086	.060	.040	.050	.035	.024	.016	.011	.008	
5.0	.138	.089	.053	.119	.077	.046	.082	.054	.032	.047	.032	.019	.015	.010	.006	
6.0	.132	.080	.044	.113	.070	.038	.078	.049	.027	.045	.029	.016	.015	.009	.005	
7.0	.125	.073	.037	.108	.064	.032	.075	.045	.023	.043	.026	.014	.014	.009	.004	
8.0	.120	.067	.032	.103	.059	.028	.071	.041	.020	.041	.024	.012	.013	.008	.004	
9.0	.114	.062	.027	.099	.054	.024	.068	.038	.017	.040	.023	.010	.013	.007	.003	
10.0	.109	.058	.024	.094	.051	.021	.065	.036	.015	.038	.021	.009	.012	.007	.003	

C Range: 0 - 360DEG  
 C Interval: 15.0DEG  
 Test Speed: HIGH  
 Temperature:25.3DEG  
 Operators:Cao Chengpei  
 Test Date:2014-08-29

γ Range: 0 - 90DEG  
 γ Interval: 1.0DEG  
 Test System:EVERFINE GO-2000B\_V1 SYSTEM V2.0.288  
 Humidity:53.0%  
 Test Distance:5.780m [K=1.0000]  
 Remarks:

UGR(Unified Glare Rating) Table

Test:U:220.4V I:0.0662A P:13.45W PF:0.9216 Lamp Flux:1294.64x1 lm		
NAME: CS6R-10S-830	TYPE:Downlight	SERIAL No.:
SPEC.:3000K	DIM.: L169mm*W169mm*H66mm	
MFR.: E-LITE LIGHTING CO.,LTD.		

ceiling/cavity	0.7	0.7	0.5	0.5	0.3	0.7	0.7	0.5	0.5	0.3
walls	0.5	0.3	0.5	0.3	0.3	0.5	0.3	0.5	0.3	0.3
working plane	0.2	0.2	0.2	0.2	0.2	0.2	0.2	0.2	0.2	0.2
Room dimensions	Viewed crosswise					Viewed endwise				
x = 2H y = 2H	19.8	21.0	20.0	21.2	21.4	19.8	21.1	20.1	21.3	21.5
3H	19.9	21.1	20.2	21.3	21.5	20.0	21.2	20.3	21.4	21.6
4H	20.0	21.1	20.3	21.3	21.5	20.0	21.1	20.3	21.4	21.6
6H	19.9	20.9	20.2	21.2	21.4	20.0	21.0	20.3	21.2	21.5
8H	19.8	20.8	20.2	21.1	21.4	19.9	20.9	20.2	21.2	21.4
12H	19.8	20.7	20.1	21.0	21.3	19.9	20.8	20.2	21.1	21.4
4H 2H	19.8	20.9	20.1	21.2	21.4	19.9	21.0	20.2	21.2	21.5
3H	20.1	21.0	20.4	21.3	21.6	20.1	21.1	20.5	21.4	21.7
4H	20.1	21.0	20.5	21.3	21.6	20.2	21.1	20.6	21.4	21.7
6H	20.1	20.8	20.4	21.2	21.5	20.1	20.9	20.5	21.2	21.6
8H	20.0	20.7	20.4	21.1	21.4	20.1	20.8	20.5	21.1	21.5
12H	20.0	20.6	20.4	21.0	21.4	20.0	20.7	20.5	21.1	21.5
8H 4H	20.0	20.7	20.4	21.1	21.5	20.1	20.8	20.5	21.2	21.5
6H	20.0	20.6	20.4	20.9	21.4	20.1	20.6	20.5	21.0	21.4
8H	19.9	20.4	20.4	20.9	21.3	20.0	20.5	20.5	20.9	21.4
12H	19.9	20.3	20.4	20.8	21.3	20.0	20.4	20.5	20.9	21.3
12H 4H	20.0	20.6	20.4	21.0	21.4	20.1	20.7	20.5	21.1	21.5
6H	19.9	20.4	20.4	20.9	21.3	20.0	20.5	20.5	20.9	21.4
8H	19.9	20.3	20.4	20.8	21.2	20.0	20.4	20.4	20.8	21.3
Variations with the observer position at spacings:										
S = 1.0H	+ 1.2 / - 1.8					+ 1.3 / - 1.8				
1.5H	+ 0.6 / - 1.1					+ 0.6 / - 1.2				
2.0H	+ 2.3 / - 2.7					+ 2.2 / - 2.7				

CIE Pub.117 Corrected 1295 lm Total Lamp Luminous Flux.(8log(F/F0) = 0.9)

C Range: 0 - 360DEG  
 C Interval: 15.0DEG  
 Test Speed: HIGH  
 Temperature:25.3DEG  
 Operators:Cao Chengpei  
 Test Date:2014-08-29

γ Range: 0 - 90DEG  
 γ Interval: 1.0DEG  
 Test System:EVERFINE GO-2000B\_V1 SYSTEM V2.0.288  
 Humidity:53.0%  
 Test Distance:5.780m [K=1.0000]  
 Remarks:

UTILIZATION FACTORS TABLE

Test:U:220.4V I:0.0662A P:13.45W PF:0.9216 Lamp Flux:1294.64x1 lm		
NAME: CS6R-10S-830	TYPE:Downlight	SERIAL No.:
SPEC.:3000K	DIM.: L169mm*W169mm*H66mm	
MFR.: E-LITE LIGHTING CO.,LTD.		

REFLECTANCE										
Ceiling	0.8	0.8	0.8	0.7	0.7	0.7	0.5	0.5	0.5	0
Walls	0.7	0.5	0.3	0.7	0.5	0.3	0.7	0.5	0.3	0
Working plane	0.2	0.2	0.2	0.2	0.2	0.2	0.2	0.2	0.2	0
ROOM INDEX	UTILIZATION FACTORS(PERCENT) $k(RI) \times RCR = 5$									
k = 0.60	69	59	54	68	59	53	67	59	53	48
0.80	79	70	64	78	69	64	76	69	63	58
1.00	87	78	73	86	78	72	84	78	72	66
1.25	93	85	80	92	84	79	89	83	78	73
1.50	97	90	85	96	89	84	93	87	83	77
2.00	102	96	91	101	95	91	98	93	89	83
2.50	105	99	95	103	98	94	100	96	92	85
3.00	107	102	99	105	101	97	102	98	95	88
4.00	110	106	103	108	104	101	104	101	99	91
5.00	112	108	105	110	107	104	105	103	101	92
ROOM INDEX	UF(total)									Direct
According to DIN EN 13032-2 2004			Suspended				SHRNOM = 1.25			

C Range: 0 - 360DEG  
 C Interval: 15.0DEG  
 Test Speed: HIGH  
 Temperature:25.3DEG  
 Operators:Cao Chengpei  
 Test Date:2014-08-29

$\gamma$  Range: 0 - 90DEG  
 $\gamma$  Interval: 1.0DEG  
 Test System:EVERFINE GO-2000B\_V1 SYSTEM V2.0.288  
 Humidity:53.0%  
 Test Distance:5.780m [K=1.0000]  
 Remarks:

ISOCANDELA DIAGRAM

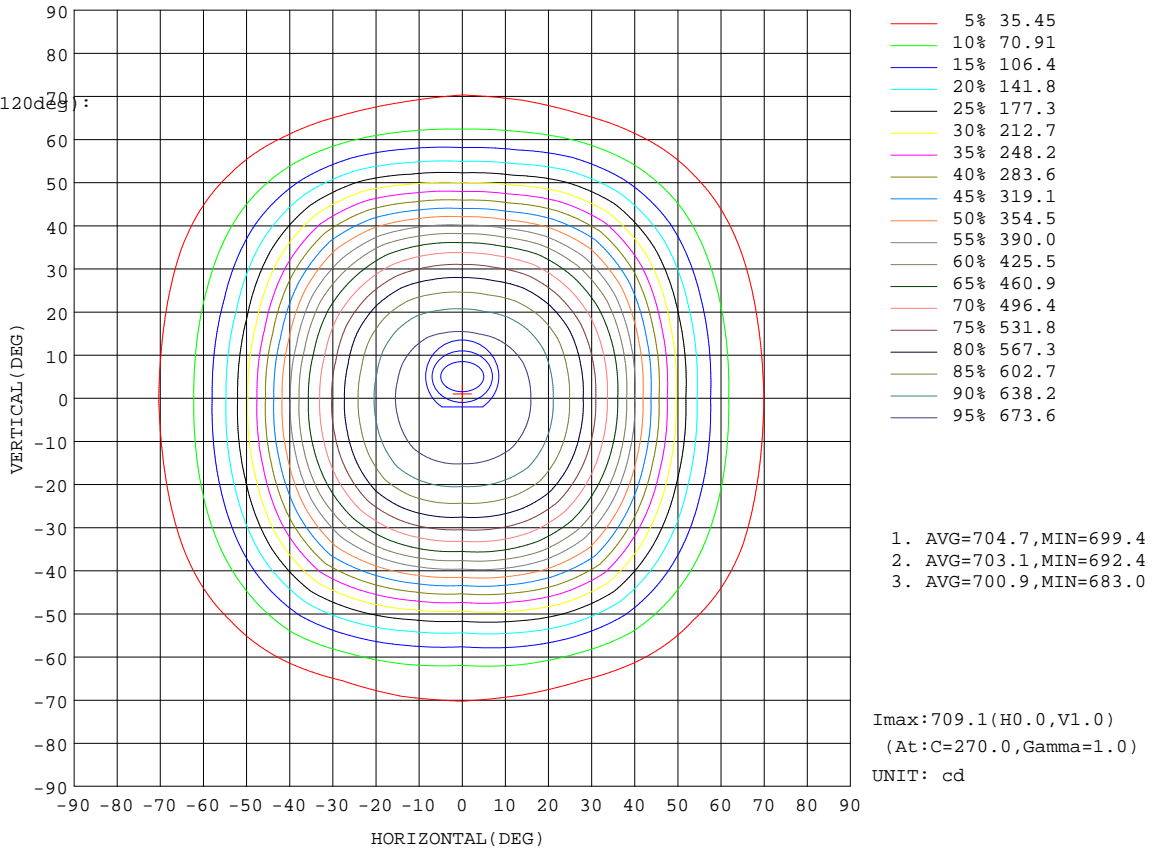
Test:U:220.4V I:0.0662A P:13.45W PF:0.9216 Lamp Flux:1294.64x1 lm		
NAME: CS6R-10S-830	TYPE:Downlight	SERIAL No.:
SPEC.:3000K	DIM.: L169mm*W169mm*H66mm	
MFR.: E-LITE LIGHTING CO.,LTD.		

Conical surface Flux(90deg):

969.14 lm  
 %lum = 74.9%  
 %lamp = 74.9%

Conical surface Flux(120deg):

1218.4 lm  
 %lum = 94.1%  
 %lamp = 94.1%



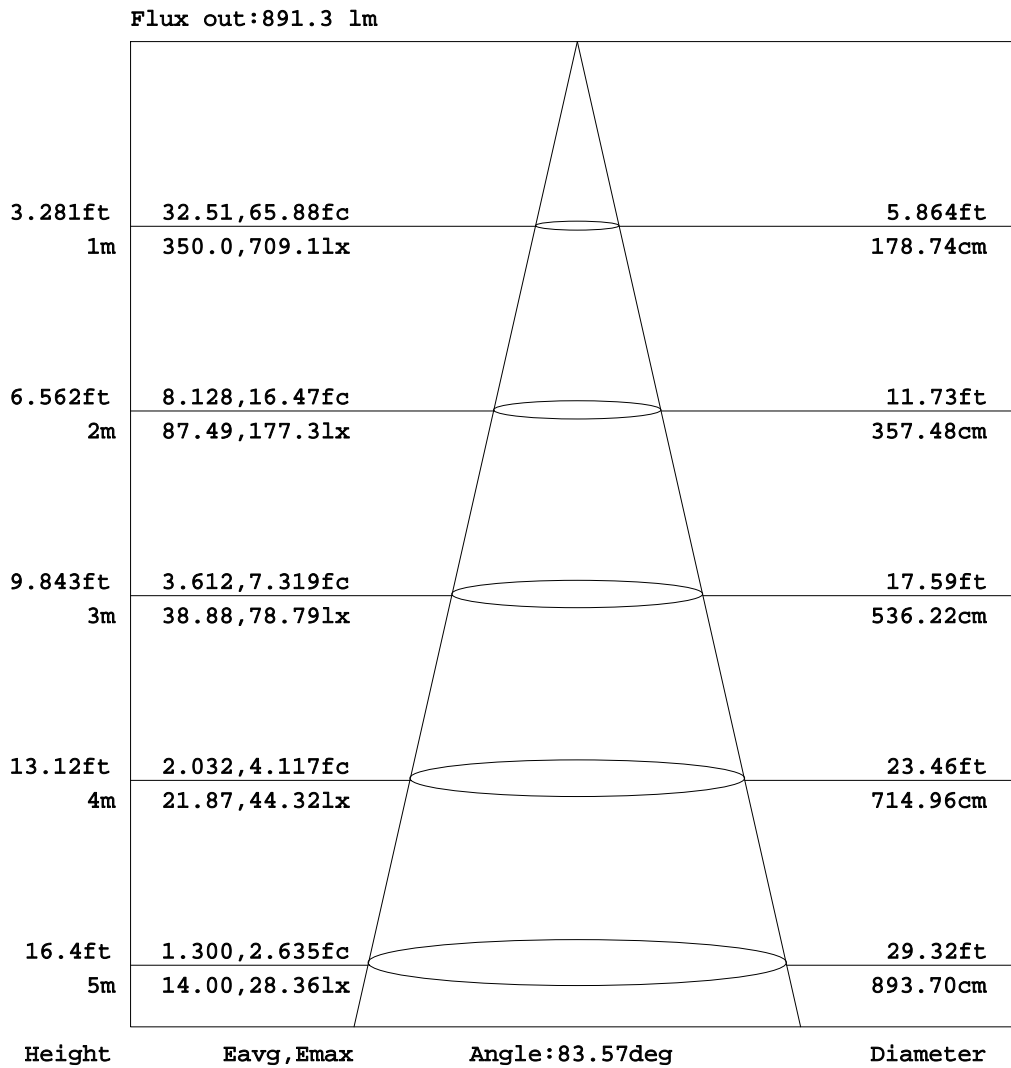
C Range: 0 - 360DEG  
 C Interval: 15.0DEG  
 Test Speed: HIGH  
 Temperature:25.3DEG  
 Operators:Cao Chengpei  
 Test Date:2014-08-29

γ Range: 0 - 90DEG  
 γ Interval: 1.0DEG  
 Test System:EVERFINE GO-2000B\_V1 SYSTEM V2.0.288  
 Humidity:53.0%  
 Test Distance:5.780m [K=1.0000]  
 Remarks:



AAI Figure

Test:U:220.4V I:0.0662A P:13.45W PF:0.9216 Lamp Flux:1294.64x1 lm		
NAME: CS6R-10S-830	TYPE:Downlight	SERIAL No.:
SPEC.:3000K	DIM.: L169mm*W169mm*H66mm	
MFR.: E-LITE LIGHTING CO.,LTD.		



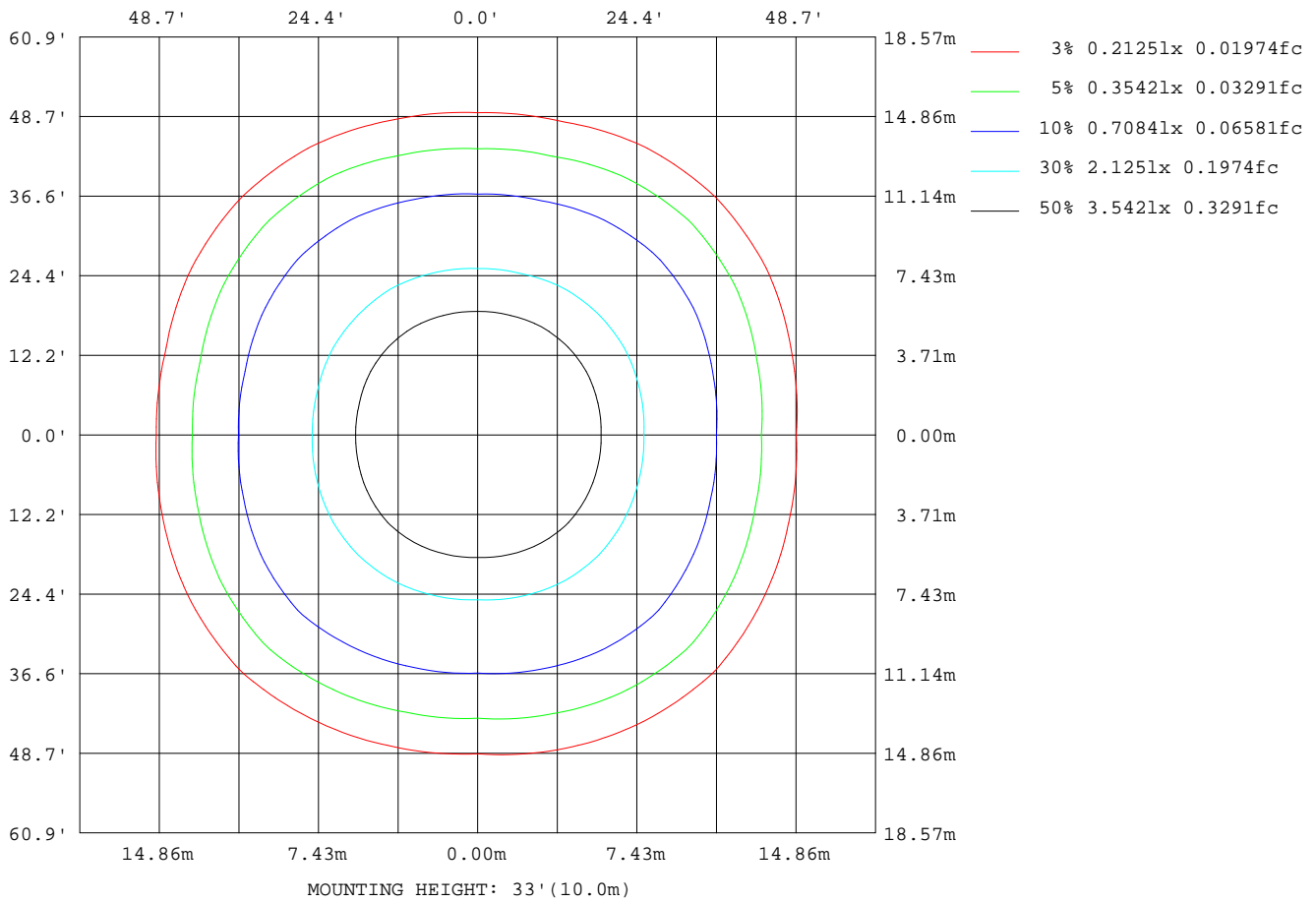
Note:The Curves indicate the illuminated area and the average illumination when the luminaire is at different distance.

C Range: 0 - 360DEG  
C Interval: 15.0DEG  
Test Speed: HIGH  
Temperature:25.3DEG  
Operators:Cao Chengpei  
Test Date:2014-08-29

γ Range: 0 - 90DEG  
γ Interval: 1.0DEG  
Test System:EVERFINE GO-2000B\_V1 SYSTEM V2.0.288  
Humidity:53.0%  
Test Distance:5.780m [K=1.0000]  
Remarks:

ISOLUX DIAGRAM

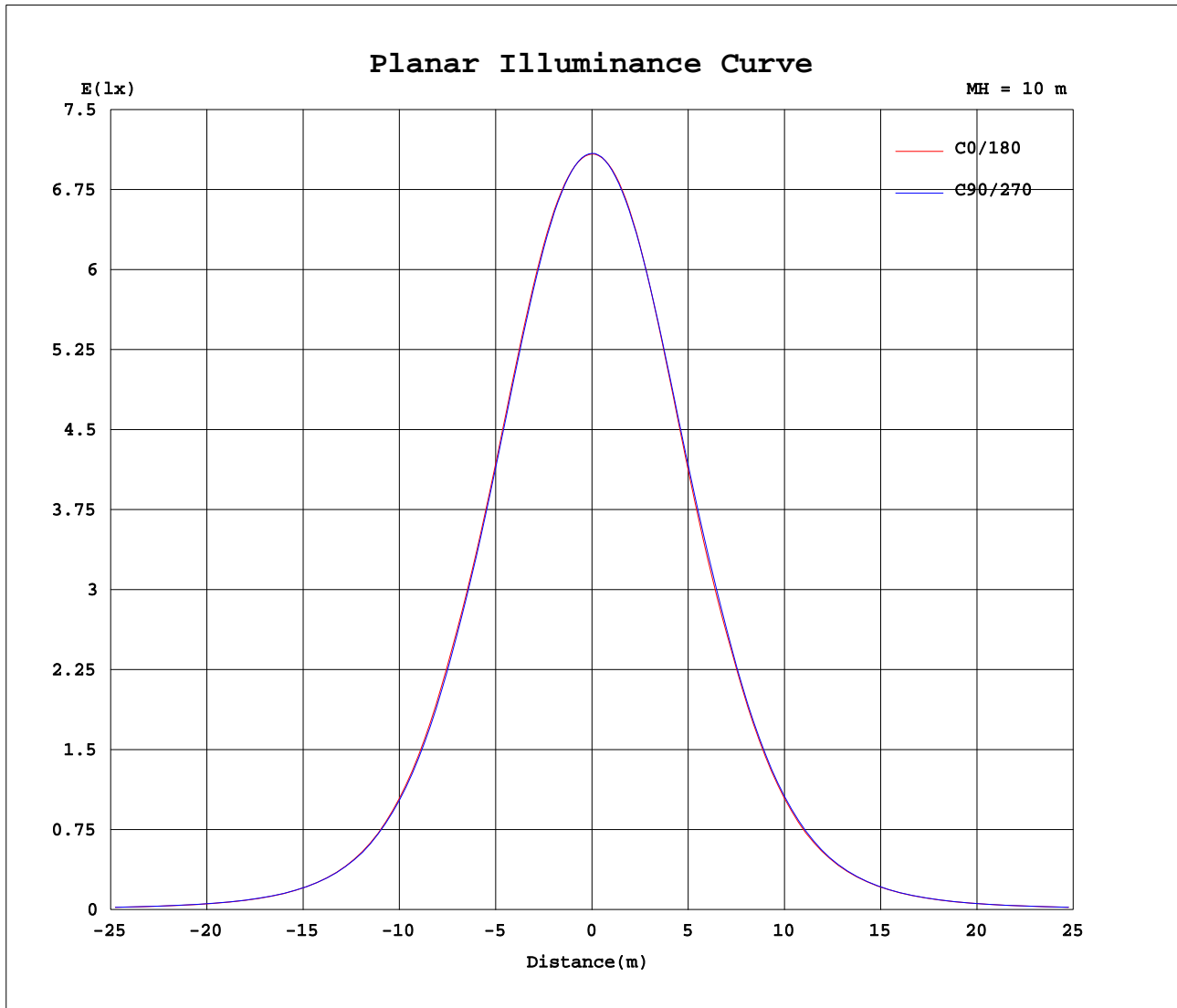
Test:U:220.4V I:0.0662A P:13.45W PF:0.9216 Lamp Flux:1294.64x1 lm		
NAME: CS6R-10S-830	TYPE:Downlight	SERIAL No.:
SPEC.:3000K	DIM.: L169mm*W169mm*H66mm	
MFR.: E-LITE LIGHTING CO.,LTD.		



C Range: 0 - 360DEG  
 C Interval: 15.0DEG  
 Test Speed: HIGH  
 Temperature:25.3DEG  
 Operators:Cao Chengpei  
 Test Date:2014-08-29

γ Range: 0 - 90DEG  
 γ Interval: 1.0DEG  
 Test System:EVERFINE GO-2000B\_V1 SYSTEM V2.0.288  
 Humidity:53.0%  
 Test Distance:5.780m [K=1.0000]  
 Remarks:

Planar Illuminance Curve



C Range: 0 - 360DEG  
 C Interval: 15.0DEG  
 Test Speed: HIGH  
 Temperature: 25.3DEG  
 Operators: Cao Chengpei  
 Test Date: 2014-08-29

$\gamma$  Range: 0 - 90DEG  
 $\gamma$  Interval: 1.0DEG  
 Test System: EVERFINE GO-2000B\_V1 SYSTEM V2.0.288  
 Humidity: 53.0%  
 Test Distance: 5.780m [K=1.0000]  
 Remarks:





## Photometric Data Table [cd]

G/C	0.0	15.0	30.0	45.0	60.0	75.0	90.0	105.0	120.0	135.0
0.0	708.4	708.4	708.6	708.7	708.7	708.8	709.0	709.0	709.1	708.9
3.0	707.1	707.2	707.2	707.3	707.3	707.5	707.6	707.8	707.9	707.9
6.0	704.1	704.2	704.0	704.0	703.7	703.9	703.7	704.3	704.4	704.8
9.0	698.8	699.0	698.5	698.5	697.8	697.7	697.2	698.1	698.6	699.3
12.0	690.6	690.9	690.6	690.4	689.2	688.4	687.9	689.0	690.0	691.0
15.0	678.2	679.0	679.0	679.2	677.3	675.8	674.6	676.3	677.9	679.2
18.0	661.2	662.6	663.6	664.2	661.3	658.6	656.8	659.3	661.8	663.7
21.0	638.9	641.4	643.7	645.3	641.4	637.0	633.9	637.6	641.6	644.0
24.0	611.4	615.0	619.1	621.9	616.9	610.5	606.0	611.0	616.7	619.7
27.0	579.2	583.4	589.3	593.6	587.8	580.1	573.9	579.8	586.8	590.5
30.0	543.7	547.9	554.5	560.2	554.5	545.5	538.1	543.9	551.7	556.1
33.0	504.9	508.6	515.6	521.7	517.2	507.6	498.7	504.4	512.3	516.8
36.0	461.6	465.9	473.1	480.2	476.3	465.2	453.3	461.3	469.7	474.2
39.0	409.2	416.8	428.2	436.6	431.3	415.5	401.0	410.6	424.2	430.4
42.0	352.5	361.2	378.2	390.9	381.0	361.5	345.7	356.2	372.6	385.2
45.0	295.1	304.6	324.2	342.6	328.1	306.6	289.9	301.1	319.0	338.1
48.0	239.3	249.4	270.3	290.1	275.0	253.2	236.9	247.5	266.1	286.2
51.0	189.8	198.6	218.5	237.1	224.0	202.1	187.5	196.7	216.1	234.3
54.0	147.3	154.7	171.3	186.3	175.6	159.0	146.7	154.2	169.3	185.0
57.0	112.2	119.1	130.1	140.5	133.4	123.0	112.8	119.4	129.2	140.0
60.0	84.20	88.89	95.57	101.9	97.63	92.71	85.51	90.33	95.34	102.7
63.0	63.16	65.69	67.67	71.80	68.67	68.19	64.43	67.46	67.81	72.79
66.0	48.98	49.00	46.68	48.91	47.65	49.99	50.17	50.39	47.06	49.73
69.0	38.46	37.21	32.63	32.59	33.03	37.14	39.58	38.17	33.47	33.11
72.0	28.56	27.30	23.14	21.61	22.79	26.81	29.67	28.00	23.84	21.85
75.0	17.90	17.62	14.93	13.91	14.58	17.53	18.72	18.17	15.33	13.94
78.0	4.504	6.035	6.977	7.702	7.263	7.208	4.784	9.239	6.997	7.577
81.0	1.816	2.148	2.702	3.363	2.899	2.491	2.040	4.060	2.769	3.206
84.0	1.768	2.073	2.461	2.713	2.615	2.335	1.995	2.268	2.526	2.673
87.0	1.734	1.971	2.226	2.376	2.320	2.166	1.945	2.129	2.289	2.374
90.0	0.1102	0.1040	0.1580	0.1768	0.2350	0.2371	0.1851	0.1373	0.0894	0.0707
G/C	150.0	165.0	180.0	195.0	210.0	225.0	240.0	255.0	270.0	285.0
0.0	708.7	708.4	708.4	708.4	708.6	708.7	708.7	708.8	709.0	709.0
3.0	707.8	707.7	707.8	707.7	708.0	708.0	708.2	708.0	708.2	707.9
6.0	704.8	704.9	705.3	705.1	705.3	705.1	705.1	704.4	704.4	704.1
9.0	699.2	699.3	699.7	699.5	699.9	699.6	699.5	698.5	698.3	697.8
12.0	690.5	690.0	690.4	690.3	691.2	691.2	691.1	689.7	689.0	688.7
15.0	677.8	676.5	676.5	676.6	678.7	679.3	679.3	677.1	676.1	675.5
18.0	661.1	658.3	657.6	657.9	661.9	663.5	663.8	660.2	658.4	658.3
21.0	639.8	635.0	633.3	634.4	640.7	643.7	643.8	638.4	635.8	636.0
24.0	613.8	607.0	604.1	606.0	614.7	619.1	619.1	612.1	608.4	609.2
27.0	583.2	575.0	570.9	573.3	583.7	589.5	589.4	581.7	577.6	579.3
30.0	548.5	539.6	535.1	537.5	548.8	554.6	555.2	547.9	544.0	545.8
33.0	510.2	501.8	497.1	499.3	510.7	515.5	517.3	510.8	506.5	508.7
36.0	469.4	462.2	456.3	458.4	469.7	473.5	476.6	469.3	461.7	464.6
39.0	426.8	414.5	404.9	409.3	426.3	430.2	433.0	419.7	410.3	414.5
42.0	378.2	361.0	350.2	355.4	376.5	385.7	383.7	366.2	355.8	361.1
45.0	325.8	306.7	295.2	300.7	323.5	339.0	331.9	311.4	300.3	306.5
48.0	273.8	252.6	240.9	247.1	270.6	287.1	279.4	258.0	246.6	253.3
51.0	223.2	203.4	192.9	197.9	220.1	235.2	228.8	206.3	196.0	202.8
54.0	176.4	160.4	151.3	155.5	174.2	185.7	180.4	161.9	153.2	158.4
57.0	134.4	123.9	116.3	119.7	133.4	141.1	137.0	124.6	117.7	121.7
60.0	98.42	92.82	87.72	90.07	98.71	102.5	100.4	93.38	88.95	91.70
63.0	69.01	68.01	66.12	66.98	70.44	72.07	70.66	68.21	66.80	68.18
66.0	47.85	49.92	51.00	50.16	48.98	48.81	48.81	49.71	51.16	50.63
69.0	33.01	37.01	40.00	37.98	34.16	32.37	33.57	36.50	39.92	38.04
72.0	22.68	26.56	29.83	27.80	24.02	21.26	22.88	26.08	29.65	27.75
75.0	14.32	16.90	18.61	17.58	15.31	13.35	14.40	16.57	18.46	17.61
78.0	6.849	5.911	4.743	5.251	6.774	7.008	6.834	5.669	4.616	5.507
81.0	2.772	2.279	1.767	2.050	2.382	2.745	2.459	2.024	1.605	1.882
84.0	2.501	2.142	1.728	1.963	2.183	2.324	2.201	1.893	1.557	1.822
87.0	2.237	1.998	1.690	1.839	1.993	2.066	1.974	1.762	1.512	1.699
90.0	0.0728	0.0665	0.0416	0.0437	0.0416	0.0520	0.0458	0.0977	0.0894	0.1851
G/C	300.0	315.0	330.0	345.0						
0.0	709.1	708.9	708.7	708.4						
3.0	708.0	707.8	707.6	707.2						
6.0	704.6	704.4	704.5	704.1						
9.0	698.5	698.6	699.2	698.8						
12.0	689.7	690.2	691.1	690.8						
15.0	677.7	678.9	679.7	678.7						
18.0	661.9	663.6	664.5	662.3						
21.0	641.7	644.4	644.7	641.0						

C Range: 0 - 360DEG  
 C Interval: 15.0DEG  
 Test Speed: HIGH  
 Temperature: 25.3DEG  
 Operators: Cao Chengpei  
 Test Date: 2014-08-29

γ Range: 0 - 90DEG  
 γ Interval: 1.0DEG  
 Test System: EVERFINE GO-2000B\_V1 SYSTEM V2.0.288  
 Humidity: 53.0%  
 Test Distance: 5.780m [K=1.0000]  
 Remarks:

## Photometric Data Table [cd]

24.0	617.0	620.8	620.6	614.8
27.0	588.1	592.0	591.3	583.9
30.0	555.6	558.4	557.5	549.1
33.0	518.9	520.8	519.5	511.3
36.0	478.6	480.2	478.9	470.3
39.0	432.6	437.9	435.8	421.4
42.0	382.6	393.0	387.6	366.8
45.0	330.4	344.7	335.6	310.7
48.0	277.6	293.0	282.3	256.1
51.0	226.7	240.6	230.2	204.2
54.0	179.1	190.3	180.7	160.0
57.0	136.7	144.1	137.7	122.3
60.0	101.2	104.1	100.9	90.84
63.0	72.11	73.29	71.20	65.92
66.0	49.55	49.76	48.48	48.47
69.0	34.26	32.81	33.17	36.11
72.0	24.01	21.47	22.76	26.05
75.0	15.40	13.54	14.61	16.82
78.0	7.049	7.284	7.319	6.680
81.0	2.366	2.954	2.553	2.159
84.0	2.145	2.367	2.305	2.038
87.0	1.927	2.087	2.068	1.924
90.0	0.1851	0.1976	0.2038	0.2225

C Range: 0 - 360DEG  
 C Interval: 15.0DEG  
 Test Speed: HIGH  
 Temperature: 25.3DEG  
 Operators: Cao Chengpei  
 Test Date: 2014-08-29

γ Range: 0 - 90DEG  
 γ Interval: 1.0DEG  
 Test System: EVERFINE GO-2000B\_V1 SYSTEM V2.0.288  
 Humidity: 53.0%  
 Test Distance: 5.780m [K=1.0000]  
 Remarks: