

LED Downlight CATO Series CS6F-20S-840



Light Output Ratio:	100.0%	
Luminaire Power:	21.58 W	
SHR Nominal:	1.25	Calculated using the TM5
SHR Maximum:	1.25	fine grid method.

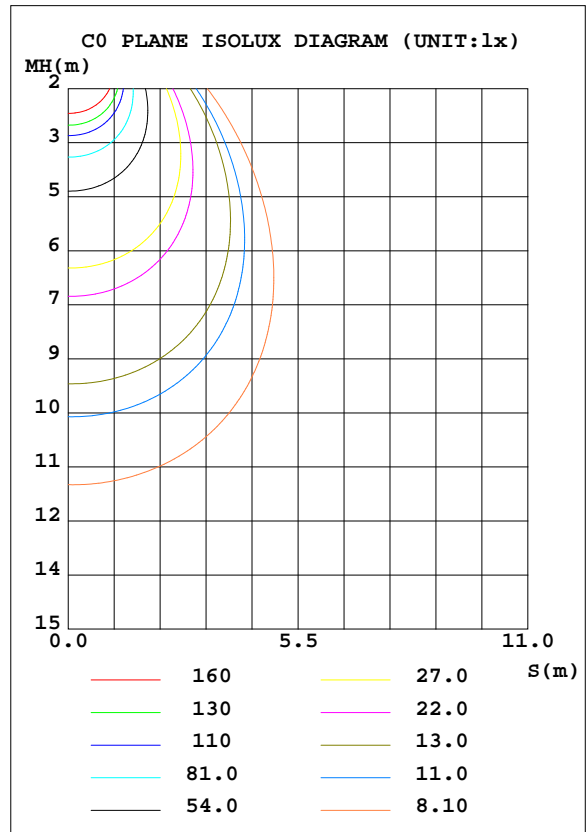
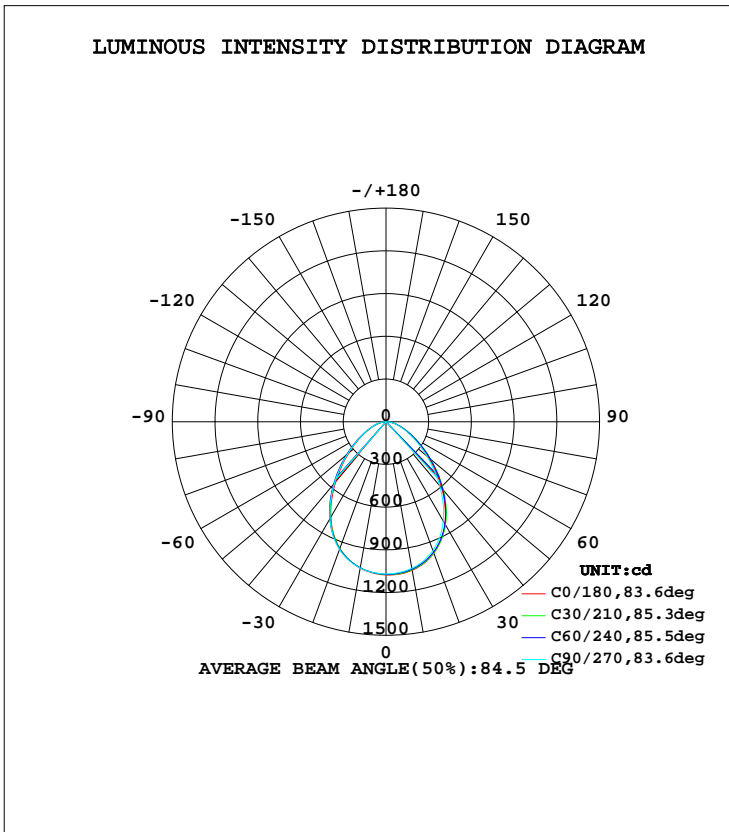
C Range: 0 - 360DEG
 C Interval: 15.0DEG
 Test Speed: HIGH
 Temperature: 25.3DEG
 Operators: Cao Chengpei
 Test Date: 2014-08-29

γ Range: 0 - 90DEG
 γ Interval: 1.0DEG
 Test System: EVERFINE GO-2000B_V1 SYSTEM V2.0.288
 Humidity: 53.0%
 Test Distance: 5.780m [K=1.0000]
 Remarks:

LUMINAIRE PHOTOMETRIC TEST REPORT

Test:U:220.3V I:0.1021A P:21.58W PF:0.9596 Lamp Flux:2119.58x1 lm		
NAME: CS6F-20S-840	TYPE:Downlight	SERIAL No.:
SPEC.:4000K	DIM.: L169mm*W169mm*H66mm	
MFR.: E-LITE LIGHTING CO.,LTD.		

DATA OF LAMP		PHOTOMETRIC DATA				Eff: 98.21 lm/W
MODEL	SAMSUNG-4000K	Imax(cd)	1077	S/MH(C0/180)	1.10	
NOMINAL POWER(W)	22	LOR(%)	100.0	S/MH(C90/270)	1.12	
RATED VOLTAGE(V)	220	TOTAL FLUX(lm)	2119.6	η UP, DN(C0-180)	0.0, 50.8	
NOMINAL FLUX(lm)	2119.58	CIE CLASS	DIRECT	η UP, DN(C180-360)	0.0, 49.2	
LAMPS INSIDE	1	η up(%)	0.0	CIBSE SHR NOM	1.25	
TEST VOLTAGE(V)	220	η down(%)	100.0	CIBSE SHR MAX	1.25	



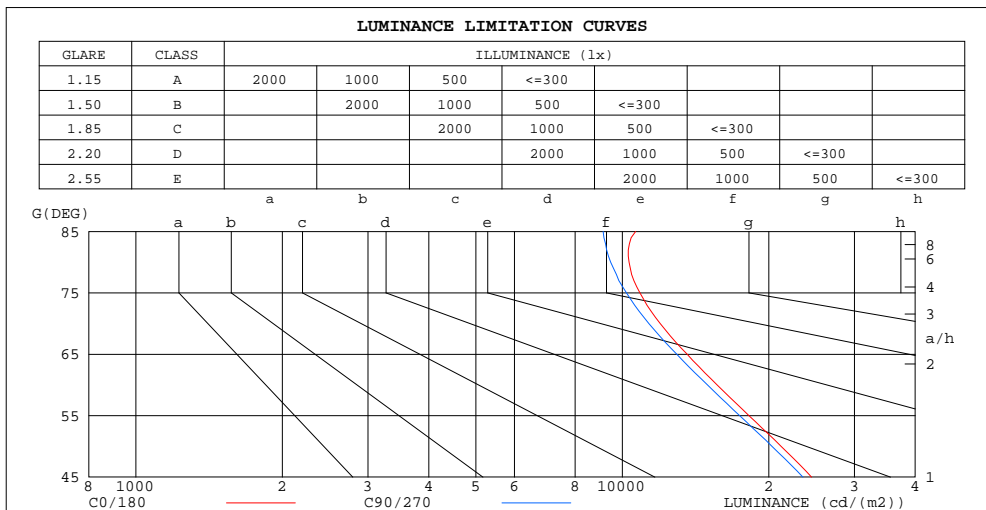
C Range: 0 - 360DEG
 C Interval: 15.0DEG
 Test Speed: HIGH
 Temperature:25.3DEG
 Operators:Cao Chengpei
 Test Date:2014-08-29

γ Range: 0 - 90DEG
 γ Interval: 1.0DEG
 Test System:EVERFINE GO-2000B_V1 SYSTEM V2.0.288
 Humidity:53.0%
 Test Distance:5.780m [K=1.0000]
 Remarks:

**ZONAL FLUX DIAGRAM
AND LUMINANCE LIMITATION CURVES**

ZONAL FLUX DIAGRAM:

γ	C0	C45	C90	C135	C180	C225	C270	C315	γ	Φ zone	Φ total	Φ lum,lamp
10	1059	1054	1045	1038	1044	1040	1043	1047	0- 10	101.0	101.0	4.76,4.76
20	982.4	981.0	962.8	952.0	947.9	948.2	954.6	969.4	10- 20	284.7	385.7	18.2,18.2
30	827.4	838.4	804.5	798.8	774.7	785.6	787.3	821.1	20- 30	409.1	794.8	37.5,37.5
40	608.8	635.6	586.4	591.8	549.8	572.2	564.6	615.2	30- 40	436.6	1231	58.1,58.1
50	389.4	418.9	372.9	381.6	341.4	362.3	353.4	400.8	40- 50	369.8	1601	75.5,75.5
60	223.7	242.2	213.7	216.8	192.0	202.5	199.6	229.6	50- 60	259.5	1861	87.8,87.8
70	116.9	124.6	110.8	109.0	97.68	100.4	102.2	116.7	60- 70	156.2	2017	95.2,95.2
80	51.21	53.25	46.93	43.53	37.75	38.46	41.24	48.99	70- 80	79.15	2096	98.9,98.9
90	6.850	5.563	1.949	0.7029	0.5906	0.5740	0.2433	2.737	80- 90	23.52	2120	100,100
100									90-100			
110									100-110			
120									110-120			
130									120-130			
140									130-140			
150									140-150			
160									150-160			
170									160-170			
180									170-180			
DEG	LUMINOUS INTENSITY:cd									UNIT:lm		



LUMINANCE cd/(m2)		
G(DEG)	C0/180	C90/270
85	10649	9133
80	10325	9463
75	10869	10198
70	11964	11343
65	13590	12944
60	15666	14962
55	18217	17424
50	21212	20314
45	24490	23510

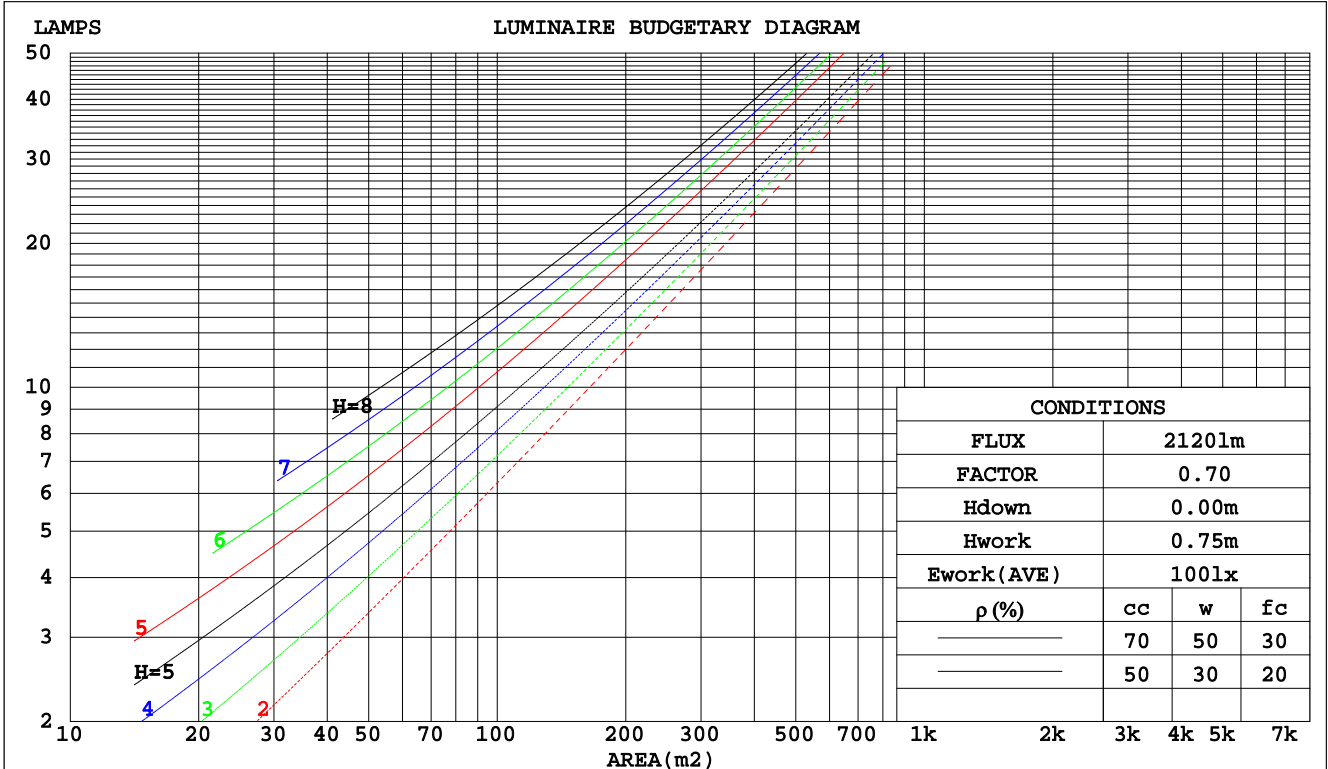
C Range: 0 - 360DEG
 C Interval: 15.0DEG
 Test Speed: HIGH
 Temperature:25.3DEG
 Operators:Cao Chengpei
 Test Date:2014-08-29

γ Range: 0 - 90DEG
 γ Interval: 1.0DEG
 Test System:EVERFINE GO-2000B_V1 SYSTEM V2.0.288
 Humidity:53.0%
 Test Distance:5.780m [K=1.0000]
 Remarks:

CU AND LUMINAIRE BUDGETARY ESTIMATE DIAGRAM

Test:U:220.3V I:0.1021A P:21.58W PF:0.9596 Lamp Flux:2119.58x1 lm		
NAME: CS6F-20S-840	TYPE:Downlight	SERIAL No.:
SPEC.:4000K	DIM.: L169mm*W169mm*H66mm	
MFR.: E-LITE LIGHTING CO.,LTD.		

pcc	80%			70%			50%			30%			10%			0
	50%	30%	10%	50%	30%	10%	50%	30%	10%	50%	30%	10%	50%	30%	10%	0
pw																0
pfc																0
RCR	RCR:Room Cavity Ratio Coefficients of Utilization(CU)															
0.0	1.19	1.19	1.19	1.16	1.16	1.16	1.11	1.11	1.11	1.06	1.06	1.06	1.02	1.02	1.02	.00
1.0	1.06	1.03	.99	1.04	1.01	.98	.90	.97	.95	.96	.94	.92	.93	.91	.89	.87
2.0	.95	.89	.84	.93	.87	.83	.89	.85	.81	.86	.82	.79	.83	.80	.77	.75
3.0	.85	.78	.72	.83	.77	.71	.80	.75	.70	.78	.73	.69	.75	.71	.68	.66
4.0	.76	.68	.63	.75	.68	.62	.73	.66	.61	.70	.65	.60	.68	.64	.60	.58
5.0	.69	.61	.55	.68	.60	.55	.66	.59	.54	.64	.58	.54	.62	.57	.53	.51
6.0	.63	.55	.49	.62	.54	.49	.60	.53	.48	.59	.53	.48	.57	.52	.48	.46
7.0	.58	.50	.44	.57	.49	.44	.55	.48	.43	.54	.48	.43	.53	.47	.43	.41
8.0	.53	.45	.40	.52	.45	.40	.51	.44	.39	.50	.44	.39	.49	.43	.39	.37
9.0	.49	.41	.36	.48	.41	.36	.47	.41	.36	.46	.40	.36	.45	.40	.36	.34
10.0	.45	.38	.33	.45	.38	.33	.44	.37	.33	.43	.37	.33	.42	.37	.33	.31



C Range: 0 - 360DEG
 C Interval: 15.0DEG
 Test Speed: HIGH
 Temperature:25.3DEG
 Operators:Cao Chengpei
 Test Date:2014-08-29

γ Range: 0 - 90DEG
 γ Interval: 1.0DEG
 Test System:EVERFINE GO-2000B_V1 SYSTEM V2.0.288
 Humidity:53.0%
 Test Distance:5.780m [K=1.0000]
 Remarks:

WEC AND CCEC

Test:U:220.3V I:0.1021A P:21.58W PF:0.9596 Lamp Flux:2119.58x1 lm		
NAME: CS6F-20S-840	TYPE:Downlight	SERIAL No.:
SPEC.:4000K	DIM.: L169mm*W169mm*H66mm	
MFR.: E-LITE LIGHTING CO.,LTD.		

ρcc	80%			70%			50%			30%			10%			0
ρw	50%	30%	10%	50%	30%	10%	50%	30%	10%	50%	30%	10%	50%	30%	10%	0
ρfc	20%			20%			20%			20%			20%			0
RCR	RCR:Room Cavity Ratio						Wall Exitance Coefficients(WEC)									
0.0																
1.0	.263	.150	.047	.256	.146	.046	.243	.139	.045	.231	.133	.043	.220	.127	.041	
2.0	.251	.137	.042	.245	.135	.042	.233	.130	.040	.223	.125	.039	.213	.121	.038	
3.0	.235	.125	.038	.230	.123	.037	.220	.119	.036	.211	.116	.035	.202	.112	.035	
4.0	.220	.114	.034	.215	.113	.033	.207	.110	.033	.199	.107	.032	.191	.104	.032	
5.0	.206	.105	.030	.202	.104	.030	.194	.101	.030	.187	.099	.029	.180	.096	.029	
6.0	.193	.097	.028	.189	.096	.028	.182	.093	.027	.176	.091	.027	.170	.089	.027	
7.0	.181	.090	.025	.178	.089	.025	.172	.087	.025	.166	.085	.025	.161	.083	.025	
8.0	.170	.083	.023	.168	.083	.023	.162	.081	.023	.157	.079	.023	.152	.078	.023	
9.0	.161	.078	.022	.158	.077	.022	.153	.076	.021	.149	.074	.021	.144	.073	.021	
10.0	.152	.073	.020	.150	.072	.020	.145	.071	.020	.141	.070	.020	.137	.069	.020	

ρcc	80%			70%			50%			30%			10%			0
ρw	50%	30%	10%	50%	30%	10%	50%	30%	10%	50%	30%	10%	50%	30%	10%	0
ρfc	20%			20%			20%			20%			20%			0
RCR	RCR:Room Cavity Ratio						Ceiling Cavity Exitance Coefficients(CCEC)									
0.0	.190	.190	.190	.163	.163	.163	.111	.111	.111	.064	.064	.064	.020	.020	.020	
1.0	.177	.157	.138	.152	.134	.119	.104	.092	.082	.060	.053	.048	.019	.017	.015	
2.0	.167	.132	.103	.143	.114	.089	.098	.079	.062	.056	.046	.036	.018	.015	.012	
3.0	.158	.114	.079	.135	.098	.069	.093	.068	.048	.054	.040	.028	.017	.013	.009	
4.0	.150	.100	.063	.128	.087	.054	.088	.060	.038	.051	.035	.023	.016	.012	.007	
5.0	.142	.090	.051	.122	.078	.044	.084	.054	.031	.049	.032	.019	.016	.010	.006	
6.0	.135	.081	.042	.116	.070	.037	.080	.049	.026	.047	.029	.015	.015	.009	.005	
7.0	.129	.074	.036	.111	.064	.031	.077	.045	.022	.044	.026	.013	.014	.009	.004	
8.0	.123	.068	.031	.106	.059	.027	.073	.041	.019	.043	.024	.011	.014	.008	.004	
9.0	.117	.063	.027	.101	.055	.023	.070	.039	.017	.041	.023	.010	.013	.007	.003	
10.0	.112	.059	.024	.096	.051	.021	.067	.036	.015	.039	.021	.009	.013	.007	.003	

C Range: 0 - 360DEG
 C Interval: 15.0DEG
 Test Speed: HIGH
 Temperature:25.3DEG
 Operators:Cao Chengpei
 Test Date:2014-08-29

γ Range: 0 - 90DEG
 γ Interval: 1.0DEG
 Test System:EVERFINE GO-2000B_V1 SYSTEM V2.0.288
 Humidity:53.0%
 Test Distance:5.780m [K=1.0000]
 Remarks:

UGR(Unified Glare Rating) Table

Test:U:220.3V I:0.1021A P:21.58W PF:0.9596 Lamp Flux:2119.58x1 lm		
NAME: CS6F-20S-840	TYPE:Downlight	SERIAL No.:
SPEC.:4000K	DIM.: L169mm*W169mm*H66mm	
MFR.: E-LITE LIGHTING CO.,LTD.		

ceiling/cavity	0.7	0.7	0.5	0.5	0.3	0.7	0.7	0.5	0.5	0.3
walls	0.5	0.3	0.5	0.3	0.3	0.5	0.3	0.5	0.3	0.3
working plane	0.2	0.2	0.2	0.2	0.2	0.2	0.2	0.2	0.2	0.2
Room dimensions	Viewed crosswise					Viewed endwise				
x = 2H y = 2H	22.6	24.0	22.9	24.2	24.4	22.5	23.8	22.7	24.0	24.2
3H	23.4	24.7	23.7	24.9	25.1	23.2	24.5	23.5	24.7	24.9
4H	23.7	24.9	24.1	25.2	25.4	23.5	24.7	23.8	25.0	25.2
6H	24.0	25.1	24.3	25.4	25.7	23.8	24.9	24.1	25.2	25.4
8H	24.1	25.2	24.4	25.5	25.7	23.9	24.9	24.2	25.2	25.5
12H	24.2	25.2	24.5	25.5	25.8	23.9	25.0	24.3	25.2	25.5
4H 2H	23.0	24.2	23.3	24.4	24.6	22.8	24.0	23.1	24.3	24.5
3H	24.0	25.0	24.3	25.3	25.6	23.8	24.8	24.2	25.1	25.4
4H	24.4	25.4	24.8	25.7	26.0	24.3	25.2	24.6	25.5	25.8
6H	24.8	25.6	25.2	26.0	26.3	24.6	25.4	25.0	25.8	26.1
8H	25.0	25.7	25.4	26.1	26.5	24.8	25.5	25.2	25.9	26.3
12H	25.1	25.8	25.5	26.2	26.6	24.9	25.6	25.3	25.9	26.3
8H 4H	24.6	25.4	25.0	25.7	26.1	24.4	25.2	24.8	25.6	25.9
6H	25.1	25.8	25.6	26.2	26.6	24.9	25.6	25.4	26.0	26.4
8H	25.4	25.9	25.8	26.3	26.8	25.2	25.7	25.6	26.1	26.6
12H	25.6	26.1	26.1	26.5	27.0	25.3	25.8	25.8	26.3	26.7
12H 4H	24.6	25.3	25.0	25.7	26.1	24.4	25.1	24.8	25.5	25.9
6H	25.2	25.7	25.6	26.1	26.6	25.0	25.5	25.4	26.0	26.4
8H	25.5	25.9	25.9	26.4	26.9	25.2	25.7	25.7	26.2	26.6
Variations with the observer position at spacings:										
S = 1.0H	+ 0.4 / - 0.5					+ 0.4 / - 0.5				
1.5H	+ 0.1 / - 0.3					+ 0.1 / - 0.3				
2.0H	+ 0.6 / - 0.7					+ 0.6 / - 0.7				

CIE Pub.117 Corrected 2120 lm Total Lamp Luminous Flux.(8log(F/F0) = 2.6)

C Range: 0 - 360DEG
 C Interval: 15.0DEG
 Test Speed: HIGH
 Temperature:25.3DEG
 Operators:Cao Chengpei
 Test Date:2014-08-29

γ Range: 0 - 90DEG
 γ Interval: 1.0DEG
 Test System:EVERFINE GO-2000B_V1 SYSTEM V2.0.288
 Humidity:53.0%
 Test Distance:5.780m [K=1.0000]
 Remarks:

UTILIZATION FACTORS TABLE

Test:U:220.3V I:0.1021A P:21.58W PF:0.9596 Lamp Flux:2119.58x1 lm		
NAME: CS6F-20S-840	TYPE:Downlight	SERIAL No.:
SPEC.:4000K	DIM.: L169mm*W169mm*H66mm	
MFR.: E-LITE LIGHTING CO.,LTD.		

REFLECTANCE										
Ceiling	0.8	0.8	0.8	0.7	0.7	0.7	0.5	0.5	0.5	0
Walls	0.7	0.5	0.3	0.7	0.5	0.3	0.7	0.5	0.3	0
Working plane	0.2	0.2	0.2	0.2	0.2	0.2	0.2	0.2	0.2	0
ROOM INDEX	UTILIZATION FACTORS(PERCENT) $k(RI) \times RCR = 5$									
k = 0.60	65	55	49	65	55	49	64	54	49	43
0.80	75	65	59	74	65	59	73	64	58	52
1.00	83	74	67	82	73	67	80	74	67	60
1.25	89	81	75	88	80	74	86	79	73	67
1.50	94	86	80	92	85	79	90	83	78	72
2.00	100	92	87	98	91	86	95	89	85	78
2.50	103	96	91	101	95	90	97	92	88	81
3.00	105	100	95	103	98	94	100	95	92	84
4.00	109	104	100	106	102	99	102	99	96	88
5.00	111	107	103	108	105	102	104	101	99	90
ROOM INDEX	UF(total)									Direct
According to DIN EN 13032-2 2004			Suspended				SHRNOM = 1.25			

C Range: 0 - 360DEG
 C Interval: 15.0DEG
 Test Speed: HIGH
 Temperature:25.3DEG
 Operators:Cao Chengpei
 Test Date:2014-08-29

γ Range: 0 - 90DEG
 γ Interval: 1.0DEG
 Test System:EVERFINE GO-2000B_V1 SYSTEM V2.0.288
 Humidity:53.0%
 Test Distance:5.780m [K=1.0000]
 Remarks:

ISOCANDELA DIAGRAM

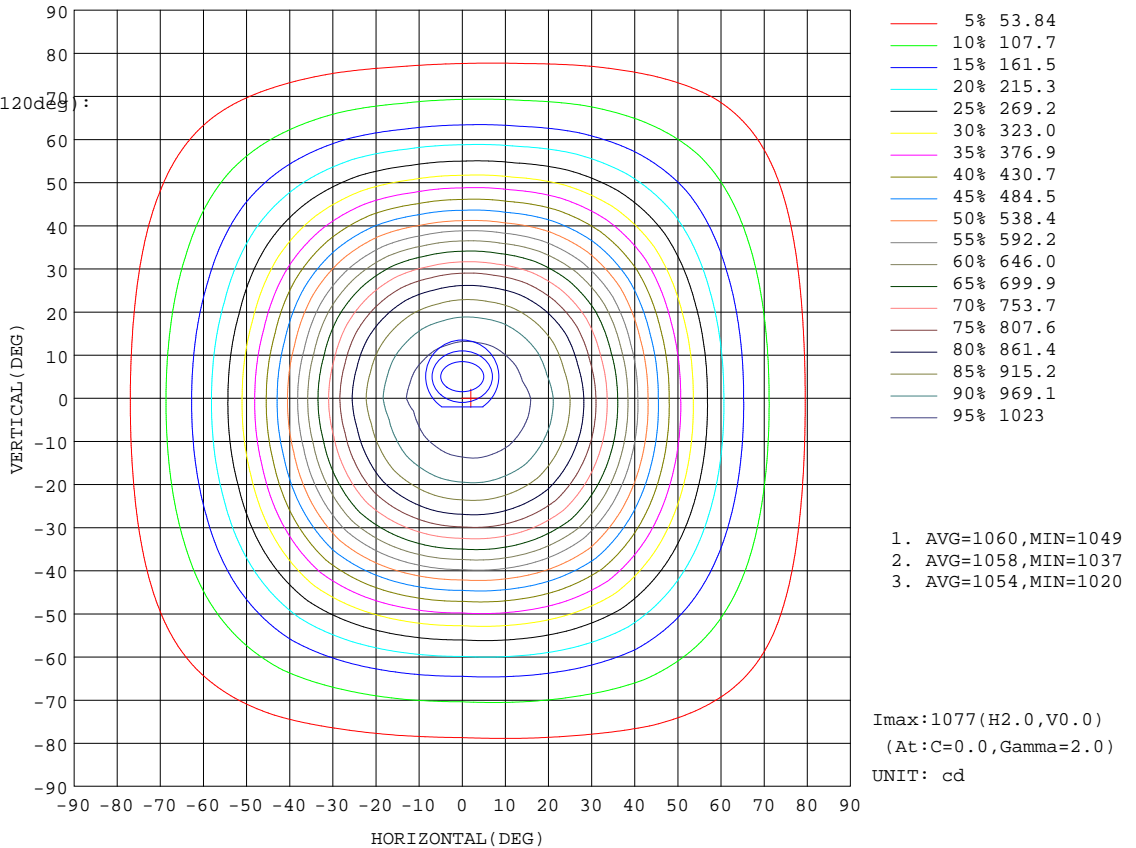
Test:U:220.3V I:0.1021A P:21.58W PF:0.9596 Lamp Flux:2119.58x1 lm		
NAME: CS6F-20S-840	TYPE:Downlight	SERIAL No.:
SPEC.:4000K	DIM.: L169mm*W169mm*H66mm	
MFR.: E-LITE LIGHTING CO.,LTD.		

Conical surface Flux(90deg):

1428.9 lm
%lum = 67.4%
%lamp = 67.4%

Conical surface Flux(120deg):

1860.8 lm
%lum = 87.8%
%lamp = 87.8%



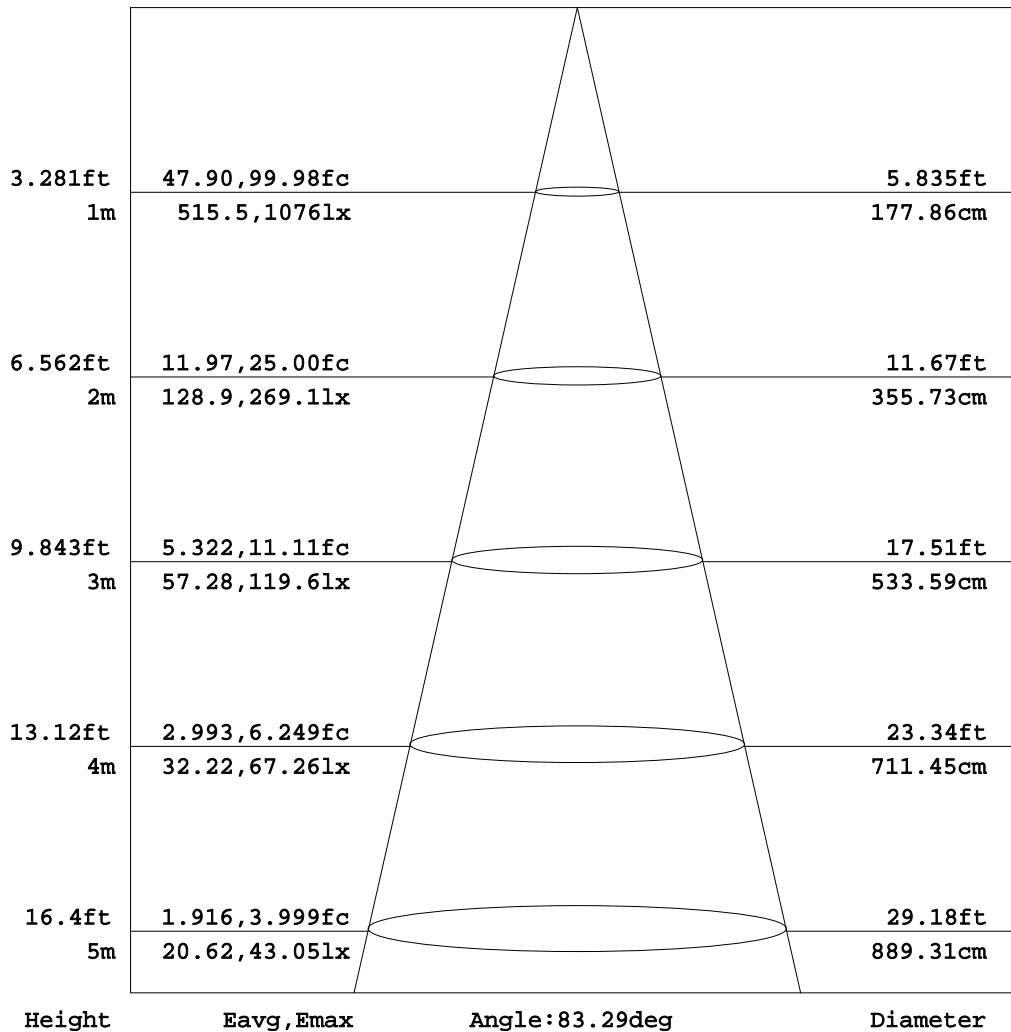
C Range: 0 - 360DEG
C Interval: 15.0DEG
Test Speed: HIGH
Temperature:25.3DEG
Operators:Cao Chengpei
Test Date:2014-08-29

γ Range: 0 - 90DEG
γ Interval: 1.0DEG
Test System:EVERFINE GO-2000B_V1 SYSTEM V2.0.288
Humidity:53.0%
Test Distance:5.780m [K=1.0000]
Remarks:

AAI Figure

Test:U:220.3V I:0.1021A P:21.58W PF:0.9596 Lamp Flux:2119.58x1 lm		
NAME: CS6F-20S-840	TYPE:Downlight	SERIAL No.:
SPEC.:4000K	DIM.: L169mm*W169mm*H66mm	
MFR.: E-LITE LIGHTING CO.,LTD.		

Flux out:1313 lm



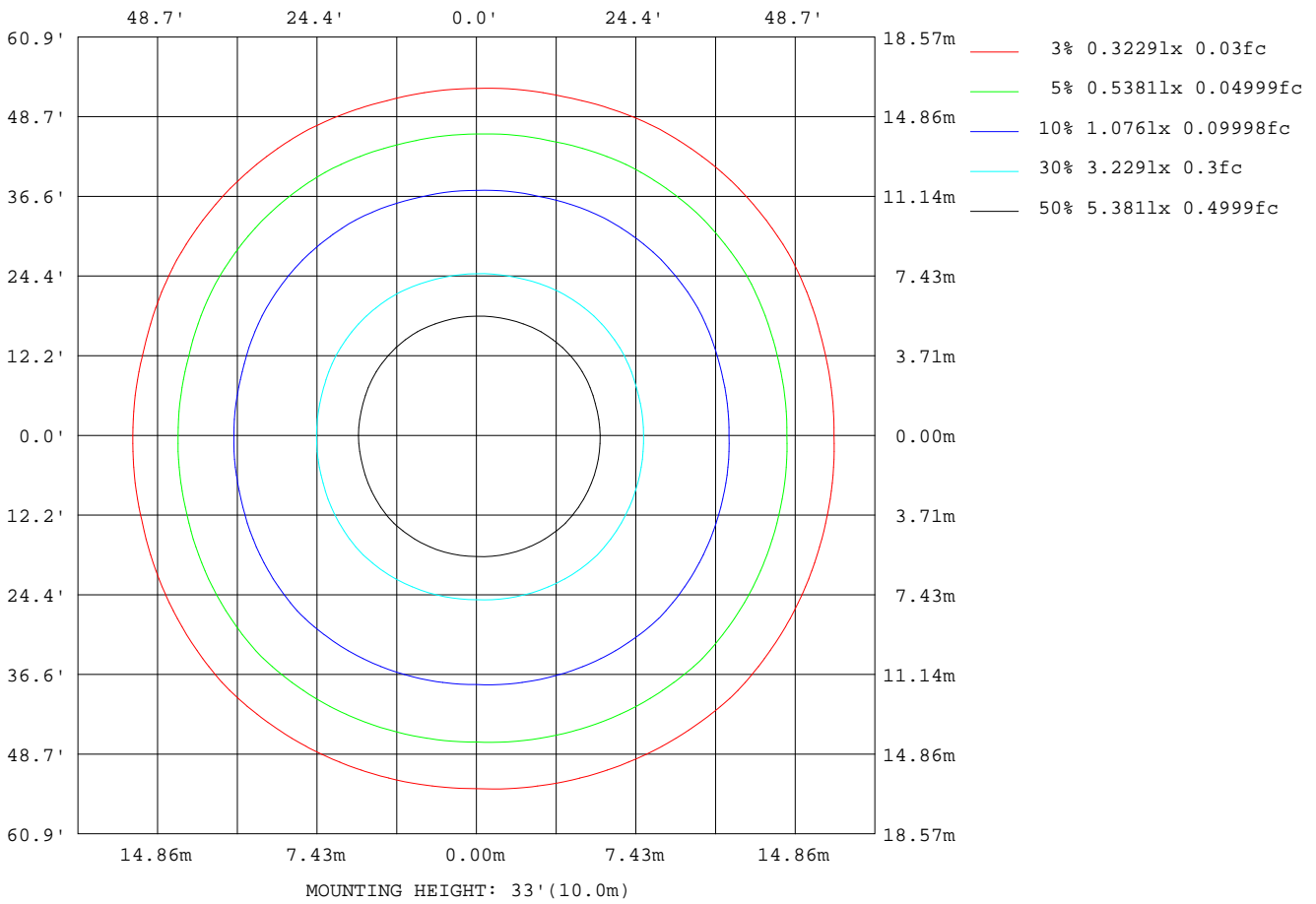
Note:The Curves indicate the illuminated area and the average illumination when the luminaire is at different distance.

C Range: 0 - 360DEG
C Interval: 15.0DEG
Test Speed: HIGH
Temperature:25.3DEG
Operators:Cao Chengpei
Test Date:2014-08-29

γ Range: 0 - 90DEG
γ Interval: 1.0DEG
Test System:EVERFINE GO-2000B_V1 SYSTEM V2.0.288
Humidity:53.0%
Test Distance:5.780m [K=1.0000]
Remarks:

ISOLUX DIAGRAM

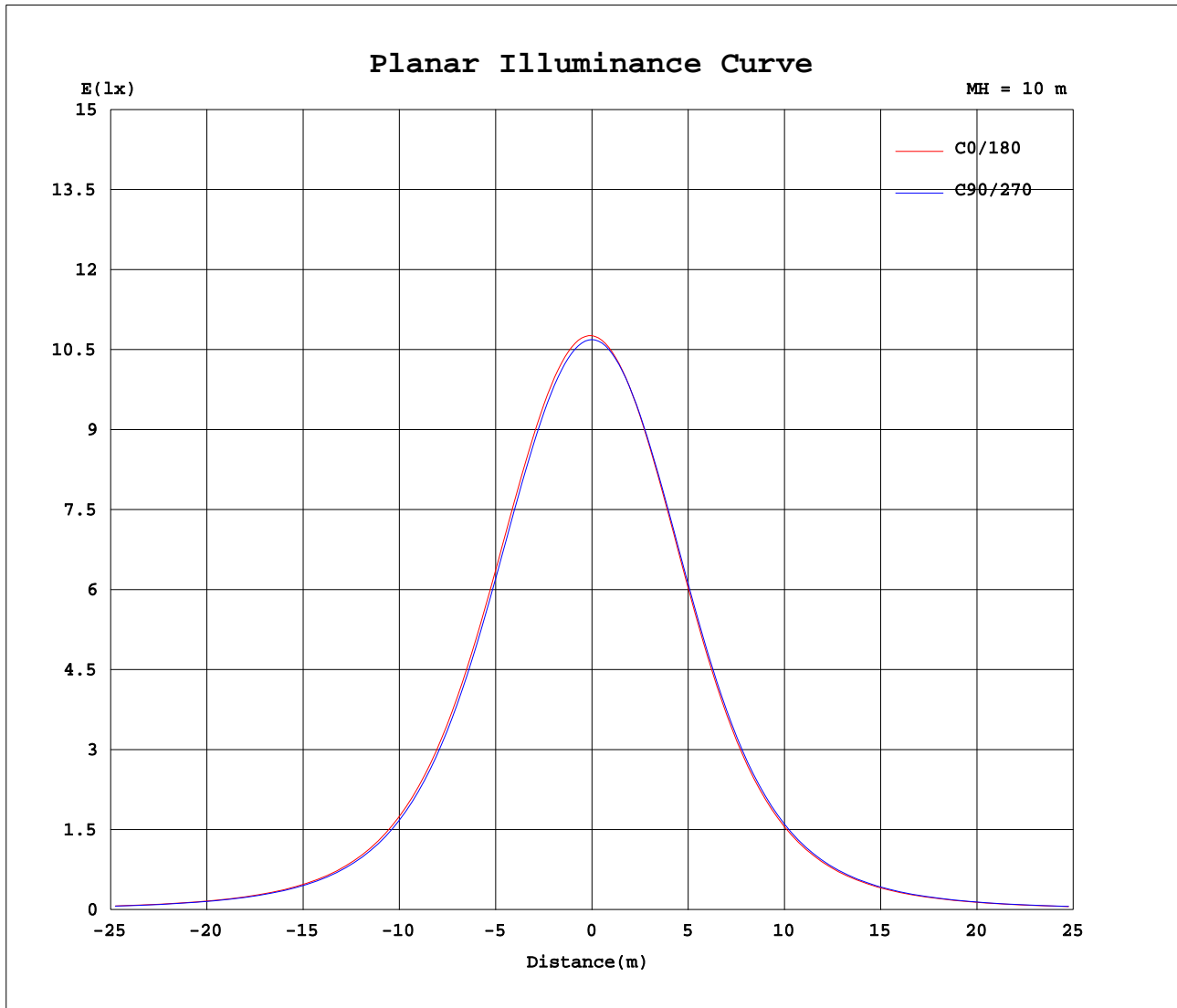
Test:U:220.3V I:0.1021A P:21.58W PF:0.9596 Lamp Flux:2119.58x1 lm		
NAME: CS6F-20S-840	TYPE:Downlight	SERIAL No.:
SPEC.:4000K	DIM.: L169mm*W169mm*H66mm	
MFR.: E-LITE LIGHTING CO.,LTD.		



C Range: 0 - 360DEG
 C Interval: 15.0DEG
 Test Speed: HIGH
 Temperature:25.3DEG
 Operators:Cao Chengpei
 Test Date:2014-08-29

γ Range: 0 - 90DEG
 γ Interval: 1.0DEG
 Test System:EVERFINE GO-2000B_V1 SYSTEM V2.0.288
 Humidity:53.0%
 Test Distance:5.780m [K=1.0000]
 Remarks:

Planar Illuminance Curve



C Range: 0 - 360DEG
 C Interval: 15.0DEG
 Test Speed: HIGH
 Temperature: 25.3DEG
 Operators: Cao Chengpei
 Test Date: 2014-08-29

γ Range: 0 - 90DEG
 γ Interval: 1.0DEG
 Test System: EVERFINE GO-2000B_V1 SYSTEM V2.0.288
 Humidity: 53.0%
 Test Distance: 5.780m [K=1.0000]
 Remarks:

Photometric Data Table [cd]

G/C	0.0	15.0	30.0	45.0	60.0	75.0	90.0	105.0	120.0	135.0
0.0	1076	1075	1073	1072	1071	1070	1069	1068	1067	1066
3.0	1076	1075	1073	1072	1070	1069	1067	1065	1064	1063
6.0	1072	1071	1069	1067	1065	1063	1061	1059	1056	1055
9.0	1063	1062	1060	1058	1055	1053	1050	1048	1044	1043
12.0	1049	1049	1046	1045	1041	1038	1034	1031	1028	1025
15.0	1030	1029	1027	1026	1021	1018	1013	1010	1005	1003
18.0	1004	1004	1002	1001	995.5	991.2	984.8	981.8	977.1	974.3
21.0	970.4	971.7	970.4	969.9	963.5	958.1	950.5	947.4	942.7	939.7
24.0	930.0	932.3	932.1	932.4	925.0	918.0	908.7	906.1	901.7	898.8
27.0	882.1	885.7	887.1	888.5	879.7	870.8	859.9	857.7	854.2	851.5
30.0	827.4	832.3	835.7	838.4	828.3	817.0	804.5	802.9	800.8	798.8
33.0	766.4	772.4	778.2	782.4	770.7	756.9	743.0	742.1	741.8	740.3
36.0	700.5	708.3	715.9	721.9	708.6	692.9	677.2	677.6	678.6	678.4
39.0	632.1	640.8	650.6	657.8	643.4	625.8	609.4	610.4	613.2	613.8
42.0	562.7	572.0	583.5	591.6	576.5	557.8	541.2	542.9	547.1	548.0
45.0	494.6	504.5	516.5	525.3	510.1	491.5	474.8	477.1	481.7	483.4
48.0	430.0	439.4	451.7	460.4	446.1	427.8	412.2	414.4	419.3	421.0
51.0	370.0	378.9	390.6	398.6	385.6	368.5	354.3	356.3	361.0	362.4
54.0	315.3	323.6	333.9	341.5	329.7	314.7	301.8	303.7	307.5	308.7
57.0	266.7	273.8	282.6	289.0	279.0	266.2	254.9	256.3	259.3	260.0
60.0	223.7	229.8	236.9	242.2	233.8	223.3	213.7	214.7	216.5	216.8
63.0	186.2	191.3	196.6	200.9	194.0	185.6	177.5	178.1	178.9	178.8
66.0	153.5	157.8	161.5	164.9	159.2	152.9	146.2	146.4	146.2	145.9
69.0	125.4	128.9	131.2	133.7	129.1	124.7	119.0	119.3	118.1	117.5
72.0	101.1	103.9	105.3	107.1	103.3	100.1	95.60	95.40	94.01	93.39
75.0	80.35	82.57	83.20	84.55	81.48	79.17	75.39	75.05	73.37	72.72
78.0	62.04	63.86	64.04	64.92	62.43	60.70	57.73	57.04	55.43	54.50
81.0	45.95	47.24	47.38	47.72	45.87	44.32	41.83	41.01	39.45	38.33
84.0	31.12	32.19	32.13	32.33	30.84	29.56	27.37	26.55	25.06	23.90
87.0	17.76	18.70	18.53	18.35	16.95	15.68	13.70	12.85	11.29	10.15
90.0	6.850	6.821	6.222	5.563	4.563	3.190	1.949	0.7403	0.5698	0.7029
G/C	150.0	165.0	180.0	195.0	210.0	225.0	240.0	255.0	270.0	285.0
0.0	1066	1066	1076	1075	1073	1072	1071	1070	1069	1068
3.0	1062	1061	1072	1070	1069	1068	1067	1067	1067	1066
6.0	1053	1053	1063	1061	1060	1059	1059	1059	1060	1060
9.0	1040	1039	1049	1047	1047	1046	1047	1046	1048	1049
12.0	1022	1020	1030	1028	1028	1027	1029	1029	1031	1032
15.0	998.3	996.0	1005	1002	1003	1003	1005	1005	1008	1010
18.0	968.3	965.0	973.2	970.2	972.3	972.1	974.6	974.4	978.4	981.1
21.0	932.3	927.4	934.2	931.1	934.6	935.1	937.9	937.2	941.5	945.3
24.0	889.4	882.5	887.8	885.0	890.0	891.4	894.4	892.6	897.1	902.3
27.0	840.1	831.0	834.3	831.7	838.8	841.5	844.2	841.1	845.5	851.8
30.0	785.2	773.3	774.7	772.3	781.8	785.6	788.3	783.0	787.3	794.8
33.0	724.9	710.3	709.7	708.1	719.7	724.9	727.0	720.0	723.5	732.4
36.0	661.1	644.5	641.9	640.6	654.6	660.6	662.3	653.3	656.5	666.2
39.0	595.4	576.9	572.7	572.3	587.2	594.5	595.3	585.4	587.5	598.2
42.0	529.4	509.9	504.8	504.5	520.5	528.0	528.5	517.4	519.4	530.2
45.0	464.8	445.5	439.8	439.6	455.4	462.9	463.4	452.0	453.6	464.2
48.0	403.4	384.8	378.9	379.1	393.9	401.1	401.3	390.7	391.7	402.2
51.0	346.4	329.4	323.7	323.6	337.1	343.5	343.9	334.1	335.1	344.8
54.0	294.3	279.4	274.1	273.9	285.8	291.2	291.7	283.2	284.3	292.9
57.0	247.6	234.8	230.4	230.0	239.8	244.3	244.9	238.0	239.1	246.7
60.0	206.2	195.9	192.0	191.3	199.3	202.5	203.6	198.0	199.6	205.9
63.0	170.0	161.7	158.7	157.9	164.0	166.5	167.6	163.5	165.3	170.5
66.0	138.6	132.4	130.0	128.8	133.6	135.2	136.4	133.6	135.5	139.7
69.0	111.6	107.0	105.2	103.9	107.4	108.4	109.8	107.9	110.0	113.3
72.0	88.55	85.18	83.77	82.53	85.09	85.70	87.01	85.84	87.88	90.57
75.0	68.71	66.23	65.01	63.82	65.75	66.04	67.38	66.72	68.77	70.98
78.0	51.44	49.21	48.17	47.30	48.54	49.02	50.04	50.03	51.70	53.88
81.0	35.67	33.75	32.78	31.98	33.00	33.39	34.43	34.61	36.26	38.25
84.0	21.42	19.59	18.57	17.90	18.55	18.91	20.05	20.50	22.03	23.95
87.0	8.424	7.239	6.588	5.775	5.744	5.690	6.873	7.943	9.318	10.98
90.0	0.7299	0.8713	0.5906	0.6280	0.6218	0.5740	0.6738	0.4118	0.2433	0.3078
G/C	300.0	315.0	330.0	345.0						
0.0	1067	1066	1066	1066						
3.0	1066	1066	1066	1066						
6.0	1061	1061	1062	1061						
9.0	1051	1051	1053	1053						
12.0	1035	1037	1039	1039						
15.0	1014	1016	1019	1019						
18.0	987.3	990.3	993.8	993.6						
21.0	953.7	957.8	962.0	961.1						

C Range: 0 - 360DEG

C Interval: 15.0DEG

Test Speed: HIGH

Temperature: 25.3DEG

Operators: Cao Chengpei

Test Date: 2014-08-29

γ Range: 0 - 90DEG

γ Interval: 1.0DEG

Test System: EVERFINE GO-2000B_V1 SYSTEM V2.0.288

Humidity: 53.0%

Test Distance: 5.780m [K=1.0000]

Remarks:

Photometric Data Table [cd]

24.0	913.1	918.8	923.4	921.6
27.0	865.6	873.1	878.0	874.9
30.0	811.8	821.1	826.3	821.5
33.0	752.3	763.7	768.9	762.1
36.0	688.7	702.0	707.0	698.1
39.0	622.5	637.3	641.7	631.3
42.0	555.8	571.0	575.0	563.3
45.0	489.8	505.1	508.8	496.3
48.0	426.7	441.4	444.6	432.3
51.0	367.4	381.0	384.0	372.4
54.0	313.3	325.4	328.2	317.7
57.0	264.4	275.0	277.5	268.8
60.0	220.9	229.6	232.3	225.1
63.0	182.8	190.1	192.7	187.2
66.0	149.8	155.4	158.1	154.0
69.0	121.5	125.7	128.3	125.5
72.0	96.88	100.3	102.8	101.0
75.0	76.03	78.68	81.03	79.99
78.0	57.81	59.99	62.15	61.64
81.0	41.61	43.65	45.48	45.53
84.0	26.80	28.67	30.36	30.75
87.0	13.25	14.93	16.67	17.36
90.0	0.8547	2.737	4.702	6.158

C Range: 0 - 360DEG
 C Interval: 15.0DEG
 Test Speed: HIGH
 Temperature: 25.3DEG
 Operators: Cao Chengpei
 Test Date: 2014-08-29

γ Range: 0 - 90DEG
 γ Interval: 1.0DEG
 Test System: EVERFINE GO-2000B_V1 SYSTEM V2.0.288
 Humidity: 53.0%
 Test Distance: 5.780m [K=1.0000]
 Remarks: