

LED Downlight CATO Series CS6F-10S-830



Light Output Ratio:	100.0%	
Luminaire Power:	13.46 W	
SHR Nominal:	1.25	Calculated using the TM5
SHR Maximum:	1.25	fine grid method.

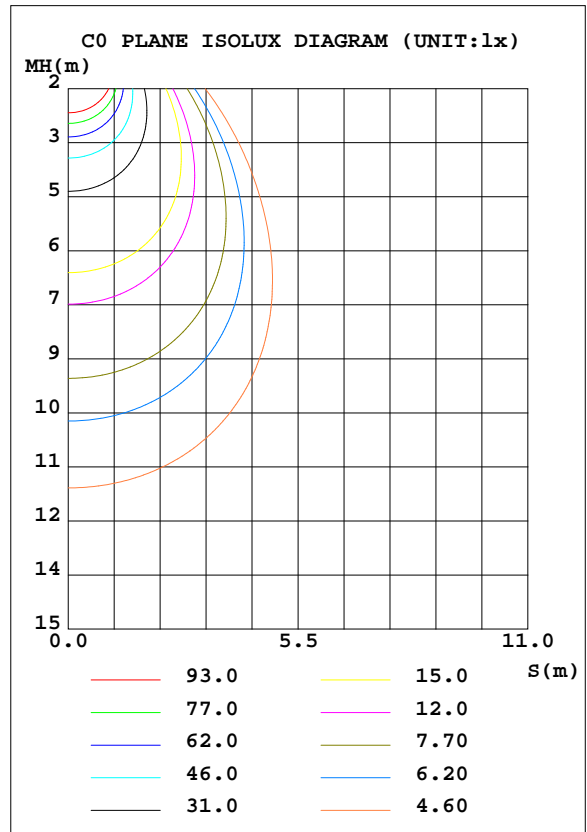
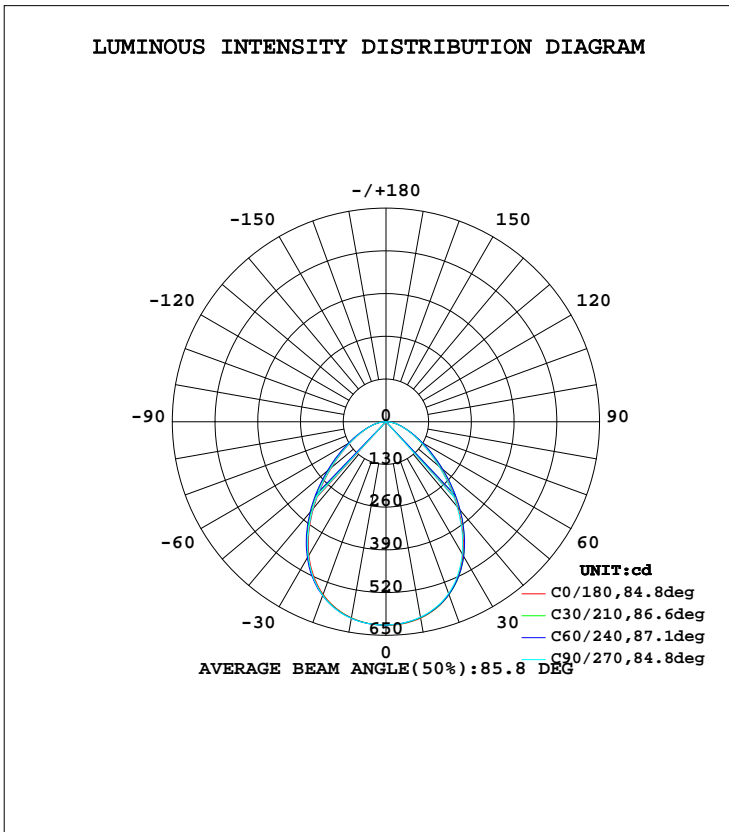
C Range: 0 - 360DEG
 C Interval: 15.0DEG
 Test Speed: HIGH
 Temperature: 25.3DEG
 Operators: Cao Chengpei
 Test Date: 2014-08-29

γ Range: 0 - 90DEG
 γ Interval: 1.0DEG
 Test System: EVERFINE GO-2000B_V1 SYSTEM V2.0.288
 Humidity: 53.0%
 Test Distance: 5.780m [K=1.0000]
 Remarks:

LUMINAIRE PHOTOMETRIC TEST REPORT

Test:U:220.4V I:0.0663A P:13.46W PF:0.9220 Lamp Flux:1248.54x1 lm		
NAME: CS6F-10S-830	TYPE:Downlight	SERIAL No.:
SPEC.:3000K	DIM.: L169mm*W169mm*H66mm	
MFR.: E-LITE LIGHTING CO.,LTD.		

DATA OF LAMP		PHOTOMETRIC DATA Eff: 92.76 lm/W			
MODEL	SAMSUNG-3000K	Imax(cd)	619.3	S/MH(C0/180)	1.15
NOMINAL POWER(W)	13	LOR(%)	100.0	S/MH(C90/270)	1.15
RATED VOLTAGE(V)	220	TOTAL FLUX(lm)	1248.5	η UP, DN(C0-180)	0.0,49.6
NOMINAL FLUX(lm)	1248.54	CIE CLASS	DIRECT	η UP, DN(C180-360)	0.0,50.4
LAMPS INSIDE	1	η up(%)	0.0	CIBSE SHR NOM	1.25
TEST VOLTAGE(V)	220	η down(%)	100.0	CIBSE SHR MAX	1.25



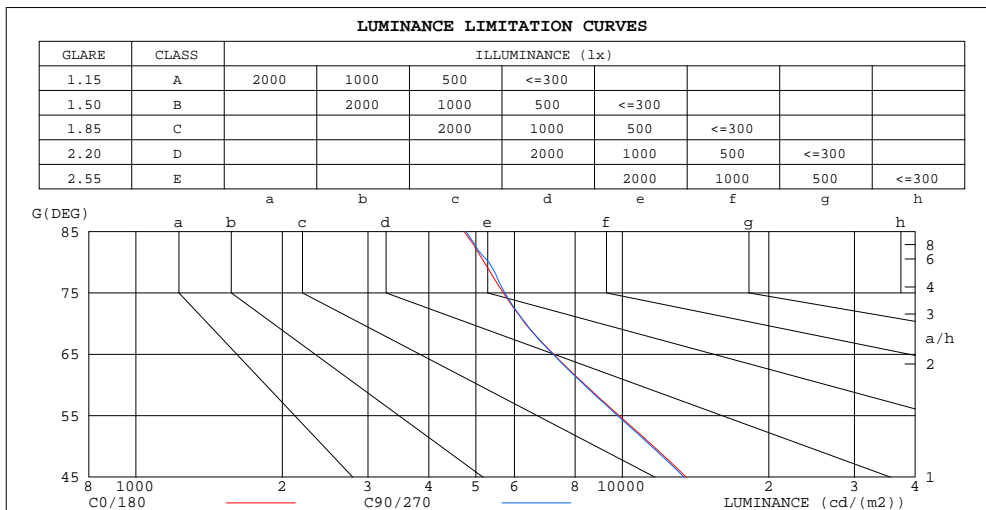
C Range: 0 - 360DEG
 C Interval: 15.0DEG
 Test Speed: HIGH
 Temperature:25.3DEG
 Operators:Cao Chengpei
 Test Date:2014-08-29

γ Range: 0 - 90DEG
 γ Interval: 1.0DEG
 Test System:EVERFINE GO-2000B_V1 SYSTEM V2.0.288
 Humidity:53.0%
 Test Distance:5.780m [K=1.0000]
 Remarks:

**ZONAL FLUX DIAGRAM
AND LUMINANCE LIMITATION CURVES**

ZONAL FLUX DIAGRAM:

γ	C0	C45	C90	C135	C180	C225	C270	C315	γ	Φ zone	Φ total	$\#lum, lamp$
10	606.8	605.3	603.7	603.9	606.0	606.7	607.8	607.3	0- 10	58.44	58.44	4.68,4.68
20	560.0	561.0	556.3	559.0	559.2	562.5	562.6	563.9	10- 20	165.5	224.0	17.9,17.9
30	468.0	476.2	464.1	474.6	469.4	478.3	472.8	479.6	20- 30	239.5	463.5	37.1,37.1
40	339.4	356.7	336.1	356.4	343.5	360.4	346.6	361.1	30- 40	257.9	721.4	57.8,57.8
50	212.7	231.1	210.8	232.0	217.2	235.5	219.7	235.7	40- 50	219.7	941.0	75.4,75.4
60	119.9	131.0	119.3	132.3	123.5	134.2	124.9	134.0	50- 60	153.9	1095	87.7,87.7
70	61.69	66.03	61.91	66.85	63.79	67.54	64.40	67.25	60- 70	92.38	1187	95.1,95.1
80	25.79	27.45	26.37	28.02	26.74	28.13	27.20	27.96	70- 80	47.15	1234	98.9,98.9
90	0.1955	0.2662	0.2163	0.2392	0.2038	0.2288	0.1976	0.2350	80- 90	14.06	1249	100,100
100									90-100			
110									100-110			
120									110-120			
130									120-130			
140									130-140			
150									140-150			
160									150-160			
170									160-170			
180									170-180			
DEG	LUMINOUS INTENSITY:cd									UNIT:lm		



LUMINANCE cd/(m2)		
G(DEG)	C0/180	C90/270
85	4727	4773
80	5200	5317
75	5697	5734
70	6315	6338
65	7224	7207
60	8395	8356
55	9849	9778
50	11584	11483
45	13519	13392

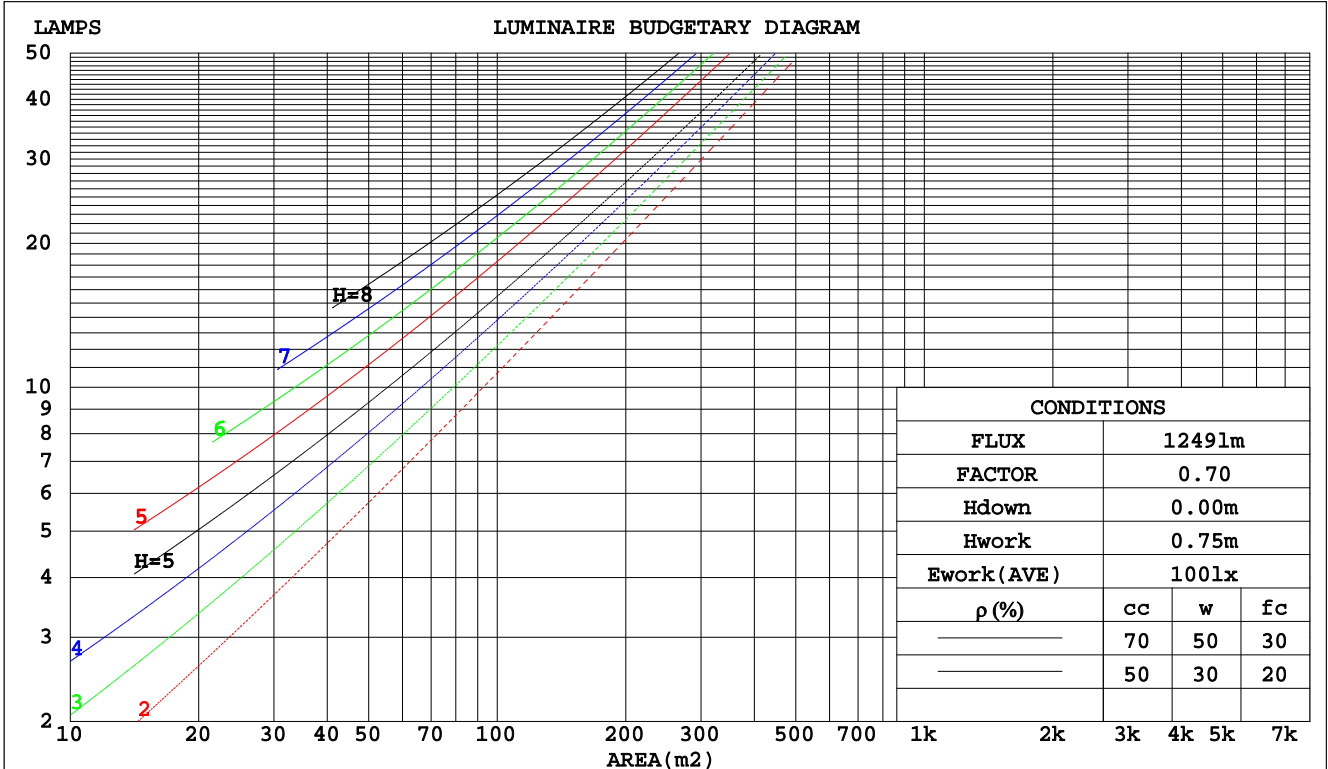
C Range: 0 - 360DEG
 C Interval: 15.0DEG
 Test Speed: HIGH
 Temperature: 25.3DEG
 Operators: Cao Chengpei
 Test Date: 2014-08-29

γ Range: 0 - 90DEG
 γ Interval: 1.0DEG
 Test System: EVERFINE GO-2000B_V1 SYSTEM V2.0.288
 Humidity: 53.0%
 Test Distance: 5.780m [K=1.0000]
 Remarks:

CU AND LUMINAIRE BUDGETARY ESTIMATE DIAGRAM

Test:U:220.4V I:0.0663A P:13.46W PF:0.9220 Lamp Flux:1248.54x1 lm		
NAME: CS6F-10S-830	TYPE:Downlight	SERIAL No.:
SPEC.:3000K	DIM.: L169mm*W169mm*H66mm	
MFR.: E-LITE LIGHTING CO.,LTD.		

pcc	80%			70%			50%			30%			10%			0
	50%	30%	10%	50%	30%	10%	50%	30%	10%	50%	30%	10%	50%	30%	10%	0
pw																0
pfc																0
RCR	RCR:Room Cavity Ratio															
	Coefficients of Utilization(CU)															
0.0	1.19	1.19	1.19	1.16	1.16	1.16	1.11	1.11	1.11	1.06	1.06	1.06	1.02	1.02	1.02	.00
1.0	1.06	1.03	.99	1.04	1.01	.98	.90	.97	.95	.96	.94	.92	.92	.91	.89	.87
2.0	.95	.89	.84	.93	.87	.83	.89	.85	.81	.86	.82	.79	.83	.80	.77	.75
3.0	.85	.77	.72	.83	.76	.71	.80	.75	.70	.78	.73	.69	.75	.71	.68	.66
4.0	.76	.68	.62	.75	.68	.62	.72	.66	.61	.70	.65	.60	.68	.63	.60	.58
5.0	.69	.61	.55	.68	.60	.55	.66	.59	.54	.64	.58	.53	.62	.57	.53	.51
6.0	.63	.55	.49	.62	.54	.49	.60	.53	.48	.58	.52	.48	.57	.52	.47	.45
7.0	.57	.49	.44	.57	.49	.44	.55	.48	.43	.54	.48	.43	.52	.47	.43	.41
8.0	.53	.45	.40	.52	.45	.39	.51	.44	.39	.50	.43	.39	.49	.43	.39	.37
9.0	.49	.41	.36	.48	.41	.36	.47	.40	.36	.46	.40	.36	.45	.39	.35	.34
10.0	.45	.38	.33	.45	.38	.33	.44	.37	.33	.43	.37	.33	.42	.36	.32	.31



C Range: 0 - 360DEG
 C Interval: 15.0DEG
 Test Speed: HIGH
 Temperature:25.3DEG
 Operators:Cao Chengpei
 Test Date:2014-08-29

γ Range: 0 - 90DEG
 γ Interval: 1.0DEG
 Test System:EVERFINE GO-2000B_V1 SYSTEM V2.0.288
 Humidity:53.0%
 Test Distance:5.780m [K=1.0000]
 Remarks:

WEC AND CCEC

Test:U:220.4V I:0.0663A P:13.46W PF:0.9220 Lamp Flux:1248.54x1 lm		
NAME: CS6F-10S-830	TYPE:Downlight	SERIAL No.:
SPEC.:3000K	DIM.: L169mm*W169mm*H66mm	
MFR.: E-LITE LIGHTING CO.,LTD.		

ρcc	80%			70%			50%			30%			10%			0
ρw	50%	30%	10%	50%	30%	10%	50%	30%	10%	50%	30%	10%	50%	30%	10%	0
ρfc	20%			20%			20%			20%			20%			0
RCR	RCR:Room Cavity Ratio						Wall Exitance Coefficients(WEC)									
0.0																
1.0	.264	.150	.048	.257	.147	.047	.244	.140	.045	.232	.134	.043	.221	.128	.041	
2.0	.252	.138	.042	.246	.135	.042	.234	.130	.040	.224	.126	.039	.214	.121	.038	
3.0	.236	.126	.038	.231	.124	.037	.221	.120	.036	.212	.116	.036	.203	.113	.035	
4.0	.221	.115	.034	.216	.113	.033	.207	.110	.033	.199	.107	.032	.192	.104	.032	
5.0	.206	.105	.030	.202	.104	.030	.195	.101	.030	.187	.099	.029	.181	.097	.029	
6.0	.193	.097	.028	.190	.096	.028	.183	.094	.027	.176	.092	.027	.170	.090	.027	
7.0	.182	.090	.025	.178	.089	.025	.172	.087	.025	.166	.085	.025	.161	.084	.025	
8.0	.171	.084	.023	.168	.083	.023	.162	.081	.023	.157	.080	.023	.152	.078	.023	
9.0	.161	.078	.022	.159	.077	.022	.154	.076	.022	.149	.075	.021	.145	.073	.021	
10.0	.152	.073	.020	.150	.073	.020	.146	.071	.020	.141	.070	.020	.137	.069	.020	

ρcc	80%			70%			50%			30%			10%			0
ρw	50%	30%	10%	50%	30%	10%	50%	30%	10%	50%	30%	10%	50%	30%	10%	0
ρfc	20%			20%			20%			20%			20%			0
RCR	RCR:Room Cavity Ratio						Ceiling Cavity Exitance Coefficients(CCEC)									
0.0	.190	.190	.190	.163	.163	.163	.111	.111	.111	.064	.064	.064	.020	.020	.020	
1.0	.177	.157	.138	.152	.134	.119	.104	.092	.082	.060	.053	.048	.019	.017	.015	
2.0	.167	.132	.103	.143	.114	.089	.098	.079	.062	.056	.046	.036	.018	.015	.012	
3.0	.158	.114	.079	.135	.098	.069	.093	.068	.048	.054	.040	.028	.017	.013	.009	
4.0	.150	.100	.063	.129	.087	.054	.088	.060	.038	.051	.035	.023	.016	.012	.007	
5.0	.142	.090	.051	.122	.078	.044	.084	.054	.031	.049	.032	.018	.016	.010	.006	
6.0	.135	.081	.042	.116	.070	.037	.080	.049	.026	.047	.029	.015	.015	.009	.005	
7.0	.129	.074	.036	.111	.064	.031	.077	.045	.022	.045	.027	.013	.014	.009	.004	
8.0	.123	.068	.031	.106	.059	.027	.073	.042	.019	.043	.024	.011	.014	.008	.004	
9.0	.117	.063	.027	.101	.055	.023	.070	.039	.017	.041	.023	.010	.013	.007	.003	
10.0	.112	.059	.024	.096	.051	.021	.067	.036	.015	.039	.021	.009	.013	.007	.003	

C Range: 0 - 360DEG
 C Interval: 15.0DEG
 Test Speed: HIGH
 Temperature:25.3DEG
 Operators:Cao Chengpei
 Test Date:2014-08-29

γ Range: 0 - 90DEG
 γ Interval: 1.0DEG
 Test System:EVERFINE GO-2000B_V1 SYSTEM V2.0.288
 Humidity:53.0%
 Test Distance:5.780m [K=1.0000]
 Remarks:

UGR(Unified Glare Rating) Table

Test:U:220.4V I:0.0663A P:13.46W PF:0.9220 Lamp Flux:1248.54x1 lm		
NAME: CS6F-10S-830	TYPE:Downlight	SERIAL No.:
SPEC.:3000K	DIM.: L169mm*W169mm*H66mm	
MFR.: E-LITE LIGHTING CO.,LTD.		

ceiling/cavity	0.7	0.7	0.5	0.5	0.3	0.7	0.7	0.5	0.5	0.3
walls	0.5	0.3	0.5	0.3	0.3	0.5	0.3	0.5	0.3	0.3
working plane	0.2	0.2	0.2	0.2	0.2	0.2	0.2	0.2	0.2	0.2
Room dimensions	Viewed crosswise					Viewed endwise				
x = 2H y = 2H	20.2	21.6	20.5	21.8	22.0	20.2	21.6	20.5	21.8	22.0
3H	21.0	22.2	21.3	22.4	22.7	21.0	22.2	21.3	22.5	22.7
4H	21.3	22.5	21.6	22.7	22.9	21.3	22.5	21.6	22.7	23.0
6H	21.5	22.6	21.8	22.9	23.1	21.5	22.7	21.9	22.9	23.2
8H	21.6	22.6	21.9	22.9	23.2	21.6	22.7	22.0	23.0	23.2
12H	21.6	22.7	22.0	22.9	23.2	21.7	22.7	22.0	23.0	23.3
4H 2H	20.6	21.7	20.9	22.0	22.2	20.6	21.8	20.9	22.0	22.3
3H	21.5	22.5	21.8	22.8	23.1	21.5	22.6	21.9	22.8	23.1
4H	21.9	22.9	22.3	23.2	23.5	22.0	22.9	22.3	23.2	23.5
6H	22.3	23.1	22.7	23.4	23.8	22.3	23.1	22.7	23.5	23.9
8H	22.4	23.2	22.8	23.5	23.9	22.4	23.2	22.9	23.6	24.0
12H	22.5	23.2	22.9	23.6	24.0	22.5	23.2	23.0	23.6	24.0
8H 4H	22.1	22.8	22.5	23.2	23.6	22.1	22.9	22.5	23.2	23.6
6H	22.5	23.2	23.0	23.6	24.0	22.6	23.2	23.0	23.6	24.1
8H	22.8	23.3	23.2	23.7	24.2	22.8	23.4	23.3	23.8	24.2
12H	22.9	23.4	23.4	23.8	24.3	23.0	23.4	23.4	23.9	24.4
12H 4H	22.1	22.8	22.5	23.2	23.6	22.1	22.8	22.5	23.2	23.6
6H	22.6	23.1	23.0	23.6	24.0	22.6	23.2	23.1	23.6	24.1
8H	22.8	23.3	23.3	23.8	24.2	22.9	23.4	23.3	23.8	24.3
Variations with the observer position at spacings:										
S = 1.0H	+ 0.4 / - 0.5					+ 0.4 / - 0.5				
1.5H	+ 0.1 / - 0.3					+ 0.1 / - 0.3				
2.0H	+ 0.7 / - 0.7					+ 0.7 / - 0.7				

CIE Pub.117 Corrected 1249 lm Total Lamp Luminous Flux.(8log(F/F0) = 0.8)

C Range: 0 - 360DEG
 C Interval: 15.0DEG
 Test Speed: HIGH
 Temperature:25.3DEG
 Operators:Cao Chengpei
 Test Date:2014-08-29

γ Range: 0 - 90DEG
 γ Interval: 1.0DEG
 Test System:EVERFINE GO-2000B_V1 SYSTEM V2.0.288
 Humidity:53.0%
 Test Distance:5.780m [K=1.0000]
 Remarks:

UTILIZATION FACTORS TABLE

Test:U:220.4V I:0.0663A P:13.46W PF:0.9220 Lamp Flux:1248.54x1 lm		
NAME: CS6F-10S-830	TYPE:Downlight	SERIAL No.:
SPEC.:3000K	DIM.: L169mm*W169mm*H66mm	
MFR.: E-LITE LIGHTING CO.,LTD.		

REFLECTANCE										
Ceiling	0.8	0.8	0.8	0.7	0.7	0.7	0.5	0.5	0.5	0
Walls	0.7	0.5	0.3	0.7	0.5	0.3	0.7	0.5	0.3	0
Working plane	0.2	0.2	0.2	0.2	0.2	0.2	0.2	0.2	0.2	0
ROOM INDEX	UTILIZATION FACTORS(PERCENT) $k(RI) \times RCR = 5$									
k = 0.60	65	55	49	64	55	49	63	54	48	43
0.80	75	65	59	74	65	58	72	64	58	52
1.00	83	73	67	82	73	67	80	74	66	60
1.25	89	80	74	88	80	74	86	78	73	67
1.50	94	85	80	92	85	79	89	83	78	71
2.00	99	92	87	98	91	86	95	89	85	78
2.50	103	96	91	101	95	90	97	92	88	81
3.00	105	100	95	103	98	94	100	95	92	84
4.00	109	104	100	106	102	99	102	99	96	88
5.00	111	107	103	108	105	102	104	101	99	90
ROOM INDEX	UF(total)									Direct
According to DIN EN 13032-2 2004			Suspended				SHRNOM = 1.25			

C Range: 0 - 360DEG
 C Interval: 15.0DEG
 Test Speed: HIGH
 Temperature:25.3DEG
 Operators:Cao Chengpei
 Test Date:2014-08-29

γ Range: 0 - 90DEG
 γ Interval: 1.0DEG
 Test System:EVERFINE GO-2000B_V1 SYSTEM V2.0.288
 Humidity:53.0%
 Test Distance:5.780m [K=1.0000]
 Remarks:

ISOCANDELA DIAGRAM

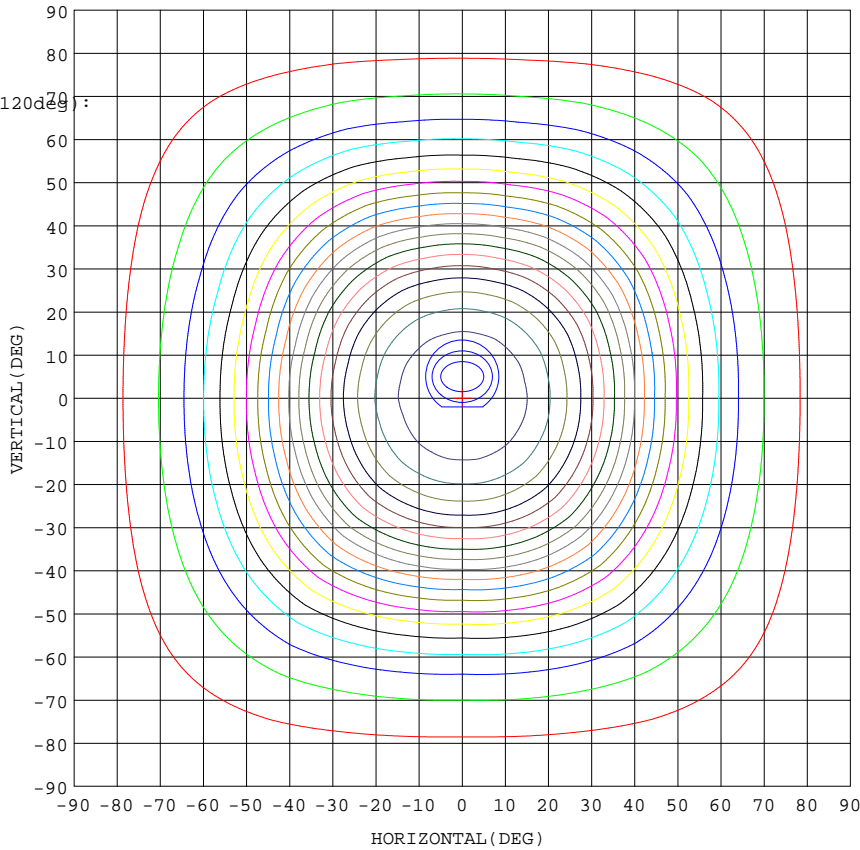
Test:U:220.4V I:0.0663A P:13.46W PF:0.9220 Lamp Flux:1248.54x1 lm		
NAME: CS6F-10S-830	TYPE:Downlight	SERIAL No.:
SPEC.:3000K	DIM.: L169mm*W169mm*H66mm	
MFR.: E-LITE LIGHTING CO.,LTD.		

Conical surface Flux(90deg):

838.61 lm
%lum = 67.2%
%lamp = 67.2%

Conical surface Flux(120deg):

1095 lm
%lum = 87.7%
%lamp = 87.7%



1. AVG=615.2, MIN=611.1
2. AVG=613.7, MIN=605.0
3. AVG=611.5, MIN=596.6

Imax:619.3(H0.0,V0.0)
(At:C=0.0,Gamma=0.0)
UNIT: cd

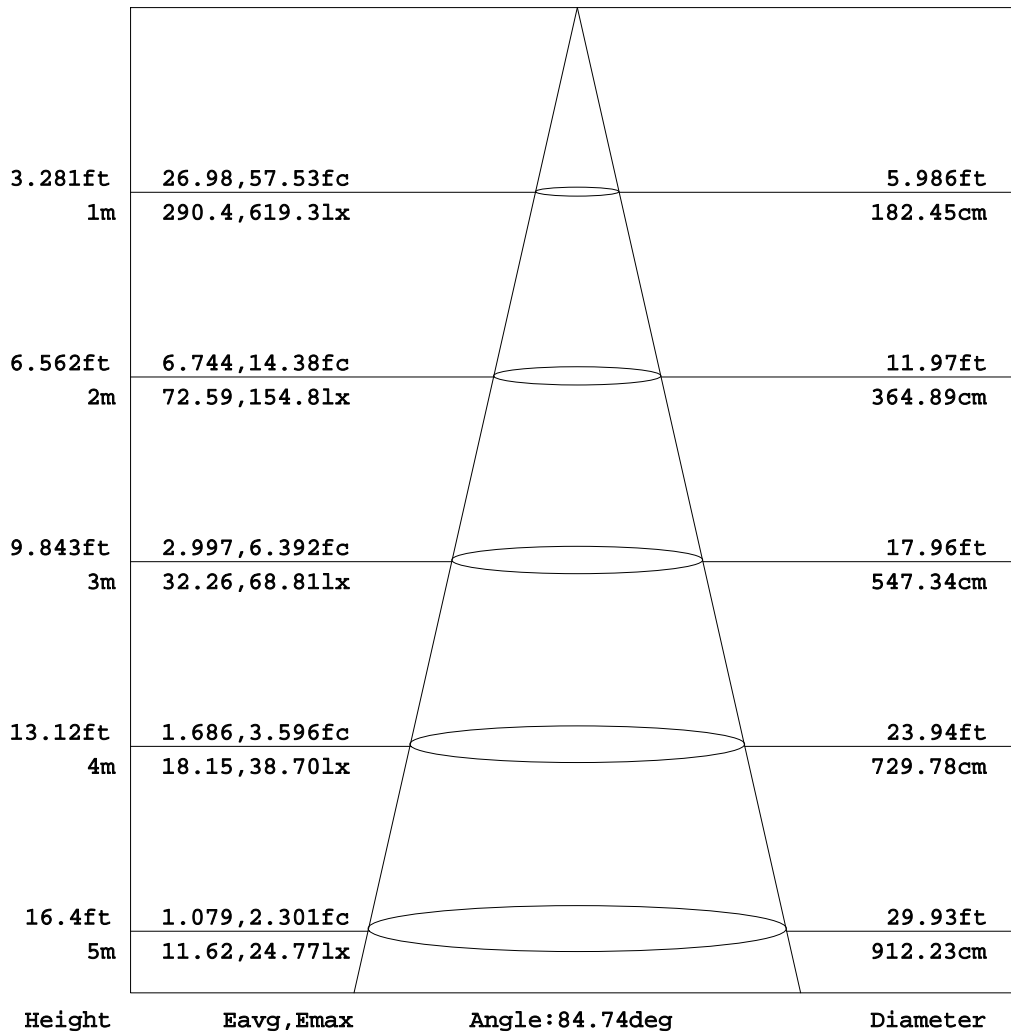
C Range: 0 - 360DEG
C Interval: 15.0DEG
Test Speed: HIGH
Temperature:25.3DEG
Operators:Cao Chengpei
Test Date:2014-08-29

γ Range: 0 - 90DEG
γ Interval: 1.0DEG
Test System:EVERFINE GO-2000B_V1 SYSTEM V2.0.288
Humidity:53.0%
Test Distance:5.780m [K=1.0000]
Remarks:

AAI Figure

Test:U:220.4V I:0.0663A P:13.46W PF:0.9220 Lamp Flux:1248.54x1 lm		
NAME: CS6F-10S-830	TYPE:Downlight	SERIAL No.:
SPEC.:3000K	DIM.: L169mm*W169mm*H66mm	
MFR.: E-LITE LIGHTING CO.,LTD.		

Flux out:793.3 lm



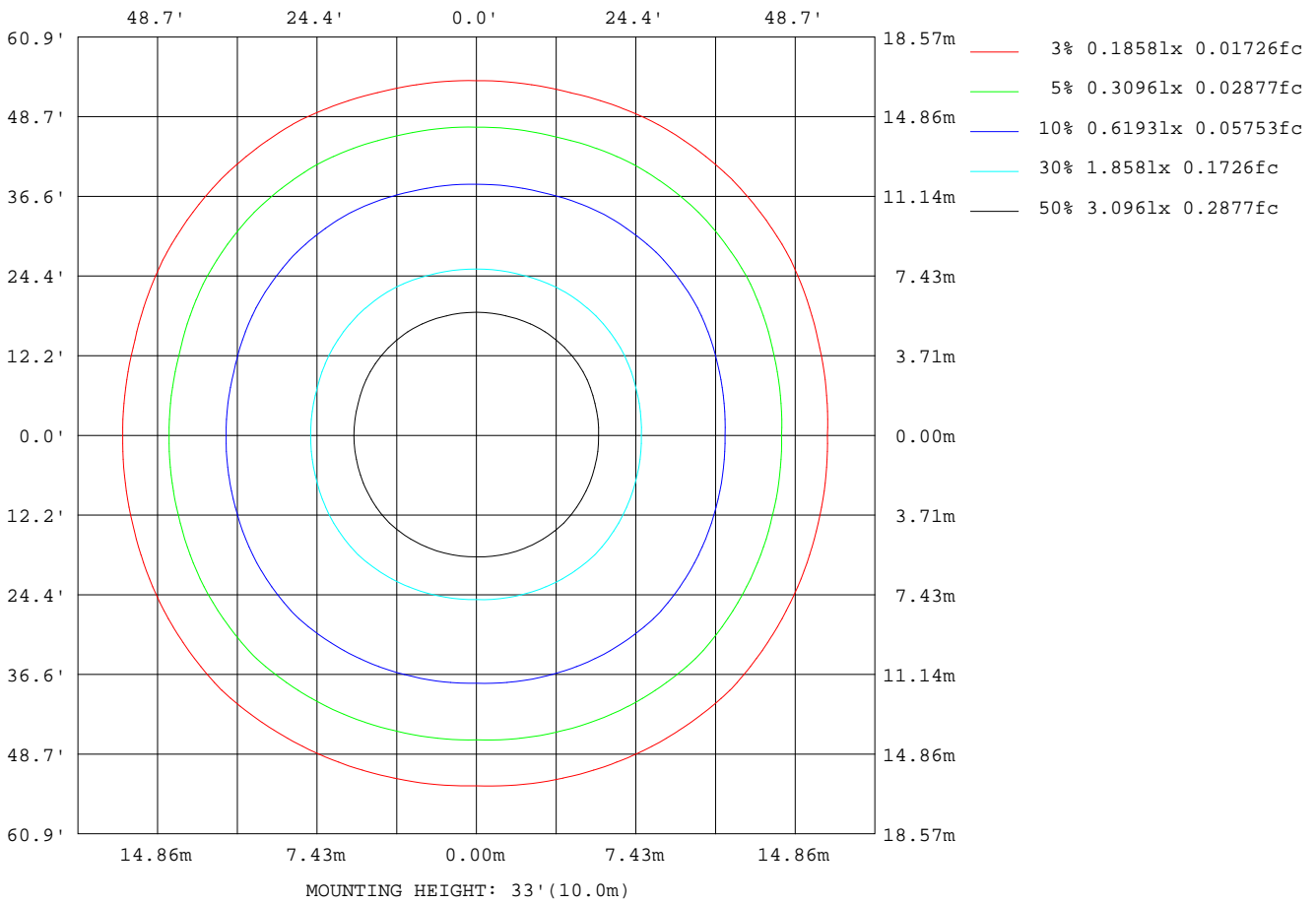
Note:The Curves indicate the illuminated area and the average illumination when the luminaire is at different distance.

C Range: 0 - 360DEG
C Interval: 15.0DEG
Test Speed: HIGH
Temperature:25.3DEG
Operators:Cao Chengpei
Test Date:2014-08-29

γ Range: 0 - 90DEG
γ Interval: 1.0DEG
Test System:EVERFINE GO-2000B_V1 SYSTEM V2.0.288
Humidity:53.0%
Test Distance:5.780m [K=1.0000]
Remarks:

ISOLUX DIAGRAM

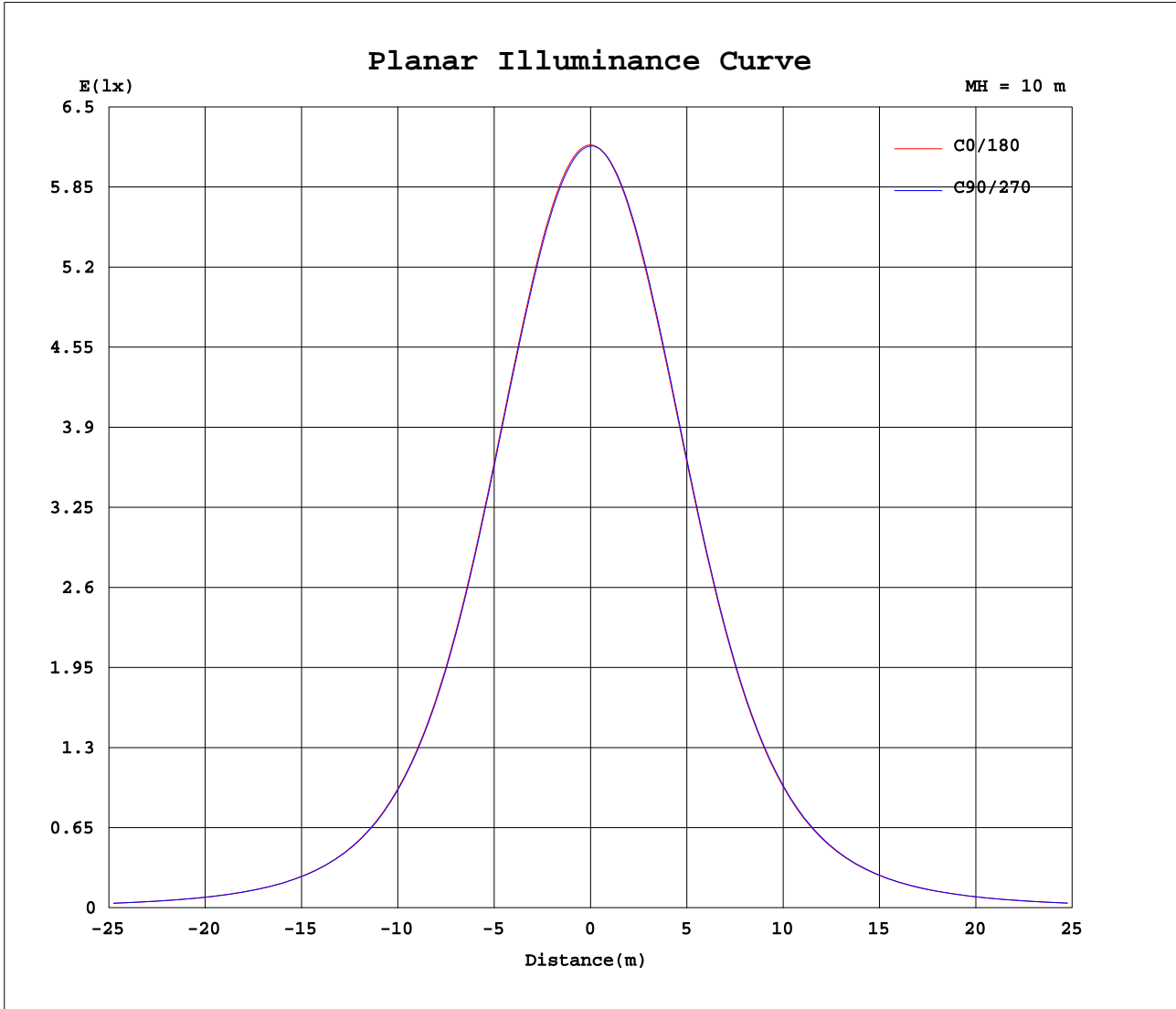
Test:U:220.4V I:0.0663A P:13.46W PF:0.9220 Lamp Flux:1248.54x1 lm		
NAME: CS6F-10S-830	TYPE:Downlight	SERIAL No.:
SPEC.:3000K	DIM.: L169mm*W169mm*H66mm	
MFR.: E-LITE LIGHTING CO.,LTD.		



C Range: 0 - 360DEG
 C Interval: 15.0DEG
 Test Speed: HIGH
 Temperature:25.3DEG
 Operators:Cao Chengpei
 Test Date:2014-08-29

γ Range: 0 - 90DEG
 γ Interval: 1.0DEG
 Test System:EVERFINE GO-2000B_V1 SYSTEM V2.0.288
 Humidity:53.0%
 Test Distance:5.780m [K=1.0000]
 Remarks:

Planar Illuminance Curve



C Range: 0 - 360DEG
 C Interval: 15.0DEG
 Test Speed: HIGH
 Temperature: 25.3DEG
 Operators: Cao Chengpei
 Test Date: 2014-08-29

γ Range: 0 - 90DEG
 γ Interval: 1.0DEG
 Test System: EVERFINE GO-2000B_V1 SYSTEM V2.0.288
 Humidity: 53.0%
 Test Distance: 5.780m [K=1.0000]
 Remarks:

LUMINOUS DISTRIBUTION INTENSITY DATA

Test:U:220.4V I:0.0663A P:13.46W PF:0.9220 Lamp Flux:1248.54x1 lm		
NAME: CS6F-10S-830	TYPE:Downlight	SERIAL No.:
SPEC.:3000K	DIM.: L169mm*W169mm*H66mm	
MFR.: E-LITE LIGHTING CO.,LTD.		

Table--1

UNIT: cd

C(DEG) γ (DEG)	0	15	30	45	60	75	90	105	120	135	150	165	180	195	210	225	240	255	270
0	619	619	619	619	618	618	618	618	618	618	618	617	619	619	619	619	618	618	618
5	616	616	615	615	615	615	614	614	614	614	614	614	616	616	616	616	616	616	616
10	607	606	606	605	605	604	604	604	604	604	603	603	606	606	607	607	607	607	608
15	589	588	588	588	587	586	585	586	585	586	585	585	588	587	589	589	590	590	590
20	560	560	560	561	559	558	556	557	558	559	558	557	559	559	562	563	563	562	563
25	520	521	522	524	521	519	516	518	519	522	520	518	520	520	524	525	526	524	523
30	468	470	473	476	473	469	464	467	470	475	472	469	469	470	476	478	479	474	473
35	406	409	414	419	415	409	402	406	412	419	415	410	409	410	418	422	422	415	412
40	339	343	350	357	351	343	336	340	348	356	353	346	343	345	355	360	359	350	347
45	273	277	285	292	287	278	270	275	284	293	289	281	278	279	291	296	295	285	281
50	213	216	224	231	226	218	211	215	223	232	228	220	217	219	230	236	234	224	220
55	161	164	171	176	172	166	160	164	171	178	174	168	165	167	176	181	179	171	167
60	120	122	126	131	128	124	119	122	127	132	129	125	123	124	131	134	134	127	125
65	87.2	88.9	91.3	94.5	92.3	89.8	87.0	89.1	92.0	95.5	93.5	90.9	89.9	90.3	95.0	96.9	96.6	92.2	90.8
70	61.7	62.9	64.0	66.0	64.5	63.5	61.9	63.2	64.6	66.9	65.4	64.2	63.8	63.7	66.7	67.5	67.7	64.9	64.4
75	42.1	42.7	43.3	44.4	43.8	43.3	42.4	43.2	43.9	45.1	44.2	43.5	43.4	43.5	45.1	45.6	45.7	44.3	44.0
80	25.8	26.3	26.6	27.5	27.3	27.0	26.4	27.0	27.4	28.0	27.2	26.7	26.7	26.7	27.8	28.1	28.3	27.4	27.2
85	11.8	12.1	12.4	12.5	12.3	12.3	11.9	12.3	12.4	12.8	12.7	12.5	12.4	12.4	13.0	12.8	12.9	12.4	12.3
90	0.20	0.24	0.27	0.27	0.28	0.26	0.22	0.24	0.27	0.24	0.24	0.23	0.20	0.23	0.20	0.23	0.25	0.24	0.20

C Range: 0 - 360DEG γ Range: 0 - 90DEG
 C Interval: 15.0DEG γ Interval: 1.0DEG
 Test Speed: HIGH Test System:EVERFINE GO-2000B_V1 SYSTEM V2.0.288
 Temperature:25.3DEG Humidity:53.0%
 Operators:Cao Chengpei Test Distance:5.780m [K=1.0000]
 Test Date:2014-08-29 Remarks:

LUMINOUS DISTRIBUTION INTENSITY DATA

Test:U:220.4V I:0.0663A P:13.46W PF:0.9220 Lamp Flux:1248.54x1 lm		
NAME: CS6F-10S-830	TYPE:Downlight	SERIAL No.:
SPEC.:3000K	DIM.: L169mm*W169mm*H66mm	
MFR.: E-LITE LIGHTING CO.,LTD.		

Table--2

UNIT: cd

C(DEG) γ (DEG)	285	300	315	330	345													
0	618	618	618	618	617													
5	617	616	616	616	615													
10	608	608	607	607	606													
15	590	591	590	590	588													
20	563	564	564	564	561													
25	524	527	527	526	522													
30	473	478	480	478	471													
35	413	421	423	421	412													
40	348	358	361	358	346													
45	282	293	297	293	281													
50	221	231	236	232	220													
55	169	177	181	178	167													
60	125	132	134	132	124													
65	91.1	95.4	96.6	95.4	90.2													
70	64.3	66.9	67.2	66.8	63.5													
75	43.9	45.2	45.3	45.0	43.3													
80	27.2	28.0	28.0	27.7	26.6													
85	12.2	12.7	12.7	13.0	12.3													
90	0.22	0.23	0.23	0.24	0.25													

C Range: 0 - 360DEG	γ Range: 0 - 90DEG
C Interval: 15.0DEG	γ Interval: 1.0DEG
Test Speed: HIGH	Test System:EVERFINE GO-2000B_V1 SYSTEM V2.0.288
Temperature:25.3DEG	Humidity:53.0%
Operators:Cao Chengpei	Test Distance:5.780m [K=1.0000]
Test Date:2014-08-29	Remarks:

Photometric Data Table [cd]

G/C	0.0	15.0	30.0	45.0	60.0	75.0	90.0	105.0	120.0	135.0
0.0	619.3	619.1	618.7	618.7	618.4	618.5	618.4	618.4	618.3	618.1
3.0	618.3	617.9	617.5	617.3	616.9	616.8	616.8	616.7	616.5	616.4
6.0	615.1	614.6	614.0	613.8	613.2	613.1	612.8	612.8	612.6	612.6
9.0	609.4	608.8	608.1	607.9	607.1	607.0	606.5	606.7	606.3	606.5
12.0	600.7	600.2	599.4	599.3	598.5	598.2	597.4	597.4	597.8	597.7
15.0	588.6	588.4	587.6	587.7	586.6	586.3	585.1	585.6	585.3	586.0
18.0	572.7	572.9	572.3	572.9	571.4	570.7	569.1	569.9	570.0	571.0
21.0	552.8	553.3	553.3	554.4	552.6	551.2	549.2	550.2	550.8	552.4
24.0	528.8	529.5	530.3	532.2	529.8	527.8	525.0	526.4	527.8	530.1
27.0	500.3	501.6	503.4	506.0	503.2	500.1	496.5	498.4	500.8	504.2
30.0	468.0	469.8	472.7	476.2	472.9	468.6	464.1	466.6	470.1	474.6
33.0	431.9	434.2	438.4	442.9	439.0	433.5	428.0	431.1	436.0	441.8
36.0	393.1	396.3	401.4	407.3	402.6	395.9	389.4	393.3	399.3	406.5
39.0	352.9	356.6	363.0	369.5	364.4	356.7	349.6	353.7	361.2	369.1
42.0	312.6	316.4	323.8	330.9	325.4	316.9	309.5	313.9	322.3	330.9
45.0	273.0	277.1	284.7	292.4	286.6	277.9	270.5	275.1	283.7	292.7
48.0	235.9	239.6	247.5	254.9	249.4	240.8	233.7	238.1	246.7	255.6
51.0	201.7	205.1	212.5	219.4	214.5	206.5	199.9	204.1	212.2	220.5
54.0	170.8	174.0	180.5	186.8	182.3	175.4	169.5	173.4	180.5	188.0
57.0	143.7	146.3	151.8	157.2	153.4	147.7	142.8	146.0	152.1	158.4
60.0	119.9	122.5	126.4	131.0	127.9	123.6	119.3	122.3	126.9	132.3
63.0	99.29	101.3	104.3	108.1	105.5	102.3	98.95	101.4	104.9	109.2
66.0	81.53	83.14	85.23	88.16	86.09	83.98	81.35	83.39	85.82	89.22
69.0	66.28	67.60	68.89	71.14	69.55	68.26	66.24	67.91	69.48	72.03
72.0	53.43	54.23	55.22	56.67	55.71	54.78	53.52	54.59	55.78	57.43
75.0	42.11	42.74	43.34	44.45	43.77	43.28	42.39	43.23	43.92	45.06
78.0	32.00	32.50	32.90	33.82	33.45	33.26	32.64	33.32	33.66	34.36
81.0	22.83	23.26	23.56	24.43	24.22	23.85	23.11	23.82	24.37	25.02
84.0	14.41	14.80	15.09	15.47	14.98	14.96	14.53	14.99	15.21	15.65
87.0	6.779	7.079	7.074	7.273	7.098	7.143	6.881	7.185	7.177	7.429
90.0	0.1955	0.2371	0.2703	0.2662	0.2807	0.2599	0.2163	0.2371	0.2703	0.2392
G/C	150.0	165.0	180.0	195.0	210.0	225.0	240.0	255.0	270.0	285.0
0.0	617.8	617.4	619.3	619.1	618.7	618.7	618.4	618.5	618.4	618.4
3.0	616.2	615.9	618.1	617.9	617.8	617.8	617.9	617.9	618.0	618.0
6.0	612.2	612.3	614.6	614.4	614.8	614.7	615.1	615.1	615.3	615.3
9.0	606.0	606.1	608.7	608.3	609.1	609.2	609.8	609.7	610.1	610.0
12.0	597.1	597.2	599.7	599.5	600.6	600.9	601.6	601.4	602.0	601.8
15.0	585.2	585.1	587.5	587.4	588.9	589.3	590.2	589.7	590.5	590.2
18.0	570.0	569.6	571.8	571.9	573.9	574.4	575.4	574.5	575.1	574.9
21.0	551.2	550.2	552.3	552.4	555.1	555.9	557.0	555.4	555.7	555.6
24.0	528.5	527.1	528.7	528.8	532.5	533.7	534.6	532.2	532.2	532.3
27.0	502.1	500.0	501.0	501.2	506.1	507.8	508.5	505.0	504.4	504.7
30.0	472.3	469.2	469.4	469.7	476.0	478.3	478.7	473.8	472.8	473.2
33.0	439.0	434.7	434.2	434.9	442.4	445.6	445.6	439.2	437.5	438.1
36.0	403.2	397.7	396.4	397.3	406.3	410.1	409.9	402.0	399.7	400.5
39.0	365.5	358.8	356.8	358.3	368.2	373.1	372.1	363.3	360.0	361.3
42.0	327.0	319.5	316.9	318.5	329.5	334.9	333.8	323.7	319.9	321.4
45.0	288.5	280.6	277.7	279.3	290.9	296.5	295.2	284.5	280.6	282.2
48.0	251.4	243.5	240.5	242.2	253.5	259.4	257.8	247.2	243.1	244.9
51.0	216.5	209.0	206.0	207.7	218.3	223.9	222.3	212.3	208.4	210.0
54.0	184.3	177.6	175.0	176.5	186.0	191.0	189.6	180.5	177.1	178.4
57.0	155.2	149.6	147.3	148.7	156.8	161.1	159.9	152.1	149.1	150.3
60.0	129.5	125.2	123.5	124.1	131.1	134.2	133.6	126.9	124.9	125.4
63.0	106.8	103.6	102.3	102.9	108.4	110.8	110.4	105.1	103.5	103.9
66.0	87.18	84.99	84.18	84.39	88.78	90.35	90.28	86.14	85.02	85.16
69.0	70.43	68.99	68.53	68.56	71.86	72.84	72.94	69.83	69.20	69.08
72.0	56.40	55.28	55.06	55.24	57.41	58.20	58.22	56.20	55.61	55.66
75.0	44.22	43.52	43.40	43.48	45.05	45.60	45.69	44.30	43.96	43.93
78.0	33.61	33.08	33.08	33.09	34.28	34.64	34.87	33.89	33.66	33.58
81.0	24.22	23.71	23.74	23.69	24.66	25.03	25.15	24.09	23.93	23.91
84.0	15.60	15.15	15.14	15.10	15.86	15.68	15.78	15.18	15.05	15.01
87.0	7.244	7.325	7.340	7.309	7.549	7.441	7.476	7.189	7.098	7.070
90.0	0.2433	0.2350	0.2038	0.2308	0.1996	0.2288	0.2475	0.2412	0.1976	0.2163
G/C	300.0	315.0	330.0	345.0						
0.0	618.3	618.1	617.8	617.4						
3.0	617.9	617.7	617.4	616.8						
6.0	615.2	614.9	614.5	613.8						
9.0	610.2	609.7	609.3	608.3						
12.0	602.3	601.6	601.2	599.8						
15.0	591.2	590.4	590.1	588.1						
18.0	576.3	575.7	575.4	572.8						
21.0	557.8	557.5	557.0	553.7						

C Range: 0 - 360DEG

C Interval: 15.0DEG

Test Speed: HIGH

Temperature: 25.3DEG

Operators: Cao Chengpei

Test Date: 2014-08-29

γ Range: 0 - 90DEG

γ Interval: 1.0DEG

Test System: EVERFINE GO-2000B_V1 SYSTEM V2.0.288

Humidity: 53.0%

Test Distance: 5.780m [K=1.0000]

Remarks:

Photometric Data Table [cd]

24.0	535.2	535.3	534.6	530.3
27.0	508.7	509.3	508.2	502.9
30.0	478.5	479.6	478.2	471.3
33.0	444.9	446.7	444.8	436.5
36.0	408.7	411.1	408.9	398.9
39.0	370.6	373.8	370.8	359.7
42.0	331.7	335.4	332.1	319.7
45.0	292.9	297.0	293.4	280.6
48.0	255.3	259.6	255.8	243.3
51.0	220.0	224.1	220.4	208.5
54.0	187.4	191.0	187.7	177.1
57.0	158.0	161.0	158.2	149.0
60.0	131.9	134.0	132.0	124.2
63.0	109.0	110.6	109.0	102.9
66.0	89.19	90.06	89.09	84.26
69.0	72.07	72.50	71.98	68.31
72.0	57.56	57.92	57.44	55.03
75.0	45.21	45.35	45.04	43.29
78.0	34.52	34.49	34.21	32.94
81.0	24.89	24.80	24.60	23.58
84.0	15.54	15.54	15.79	15.04
87.0	7.360	7.315	7.451	7.255
90.0	0.2329	0.2350	0.2371	0.2454

C Range: 0 - 360DEG
 C Interval: 15.0DEG
 Test Speed: HIGH
 Temperature: 25.3DEG
 Operators: Cao Chengpei
 Test Date: 2014-08-29

γ Range: 0 - 90DEG
 γ Interval: 1.0DEG
 Test System: EVERFINE GO-2000B_V1 SYSTEM V2.0.288
 Humidity: 53.0%
 Test Distance: 5.780m [K=1.0000]
 Remarks: