

LED Downlight CATO Series C8R-30S-840



Light Output Ratio:	100.0%	
Luminaire Power:	34.18 W	
SHR Nominal:	1.00	Calculated using the TM5
SHR Maximum:	1.15	fine grid method.

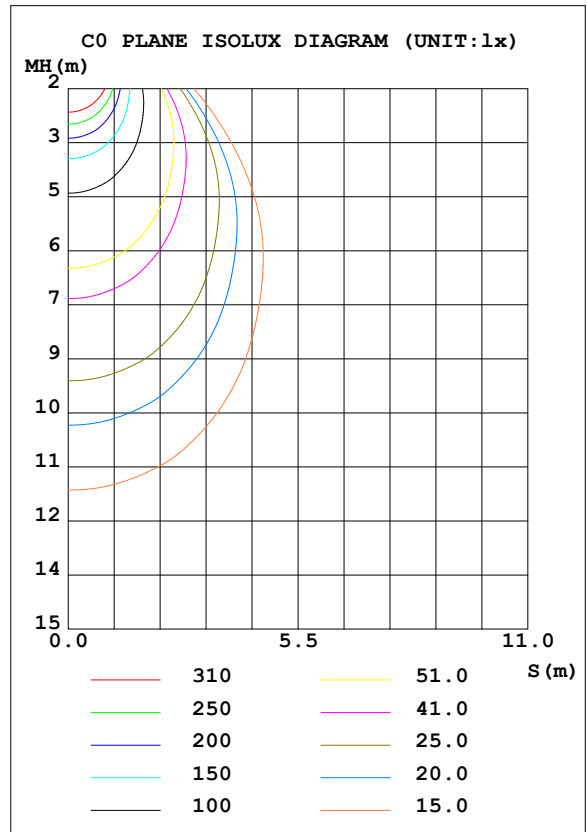
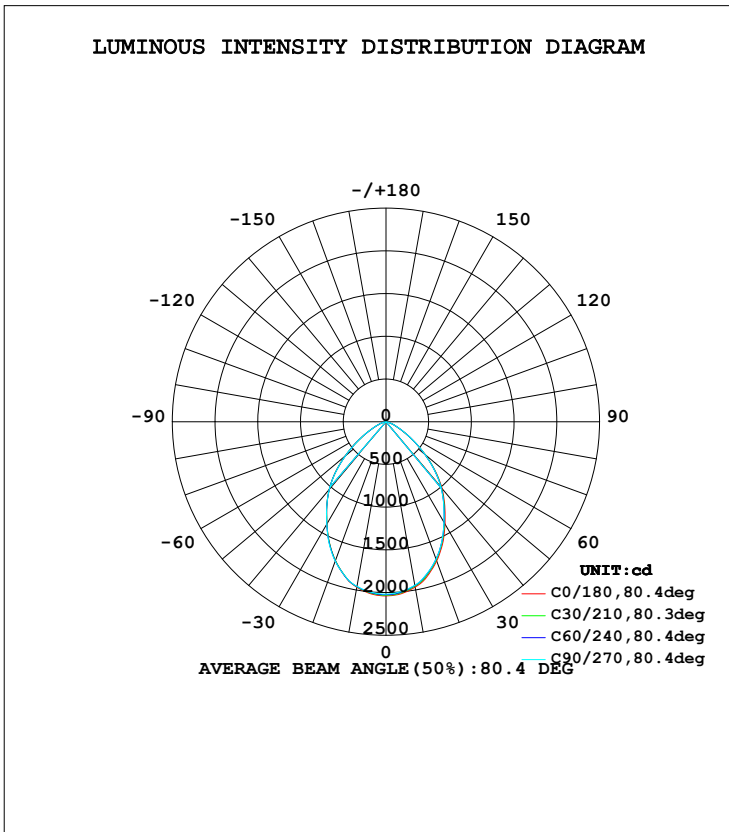
C Range: 0 - 360DEG
 C Interval: 15.0DEG
 Test Speed: HIGH
 Temperature: 25.3DEG
 Operators: Cao Chengpei
 Test Date: 2014-09-02

γ Range: 0 - 90DEG
 γ Interval: 1.0DEG
 Test System: EVERFINE GO-2000B_V1 SYSTEM V2.0.288
 Humidity: 53.0%
 Test Distance: 5.780m [K=1.0000]
 Remarks:

LUMINAIRE PHOTOMETRIC TEST REPORT

Test:U:220.4V I:0.1567A P:34.18W PF:0.9895 Lamp Flux:3369.43x1 lm		
NAME: C8R-30S-840	TYPE:Downlight	SERIAL No.:
SPEC.:4000K	DIM.: φ230mm*H76mm	
MFR.: E-LITE LIGHTING CO.,LTD.		

DATA OF LAMP		PHOTOMETRIC DATA Eff: 98.59 lm/W			
MODEL	SAMSUNG-4000K	I _{max} (cd)	2039	S/MH (C0/180)	1.05
NOMINAL POWER (W)	35	LOR (%)	100.0	S/MH (C90/270)	1.06
RATED VOLTAGE (V)	220	TOTAL FLUX (lm)	3369.4	η UP, DN (C0-180)	0.0, 49.6
NOMINAL FLUX (lm)	3369.43	CIE CLASS	DIRECT	η UP, DN (C180-360)	0.0, 50.4
LAMPS INSIDE	1	η up (%)	0.0	CIBSE SHR NOM	1.00
TEST VOLTAGE (V)	220	η down (%)	100.0	CIBSE SHR MAX	1.15



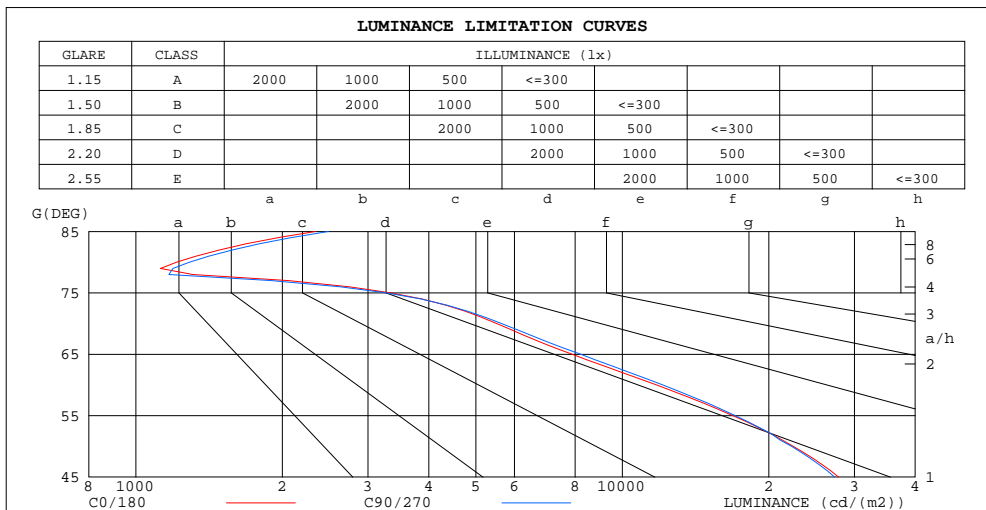
C Range: 0 - 360DEG
 C Interval: 15.0DEG
 Test Speed: HIGH
 Temperature: 25.3DEG
 Operators: Cao Chengpei
 Test Date: 2014-09-02

γ Range: 0 - 90DEG
 γ Interval: 1.0DEG
 Test System: EVERFINE GO-2000B_V1 SYSTEM V2.0.288
 Humidity: 53.0%
 Test Distance: 5.780m [K=1.0000]
 Remarks:

ZONAL FLUX DIAGRAM AND LUMINANCE LIMITATION CURVES

ZONAL FLUX DIAGRAM:

γ	C0	C45	C90	C135	C180	C225	C270	C315	γ	Φ zone	Φ total	Φ lum,lamp
10	1966	1952	1945	1939	1966	1959	1958	1948	0- 10	189.5	189.5	5.62,5.62
20	1735	1720	1713	1709	1731	1729	1737	1727	10- 20	520.9	710.4	21.1,21.1
30	1382	1368	1358	1361	1384	1379	1387	1379	20- 30	714.6	1425	42.3,42.3
40	1021	1014	1001	1011	1035	1026	1033	1021	30- 40	746.2	2171	64.4,64.4
50	599.4	602.6	595.2	605.4	622.4	615.3	620.6	604.9	40- 50	628.5	2800	83.1,83.1
60	244.1	249.5	251.5	252.1	258.2	257.3	261.7	249.4	50- 60	371.5	3171	94.1,94.1
70	78.46	80.38	80.31	80.41	81.39	82.16	83.79	80.27	60- 70	149.4	3321	98.6,98.6
80	8.744	8.991	9.295	9.349	9.143	8.690	8.538	8.473	70- 80	40.16	3361	99.7,99.7
90	0.5220	0.2766	0.2516	0.2433	0.1809	0.2038	0.5864	1.318	80- 90	8.660	3369	100,100
100									90-100			
110									100-110			
120									110-120			
130									120-130			
140									130-140			
150									140-150			
160									150-160			
170									160-170			
180									170-180			
DEG	LUMINOUS INTENSITY:cd									UNIT:lm		



LUMINANCE cd/(m2)		
G(DEG)	C0/180	C90/270
85	2339	2488
80	1213	1289
75	3344	3278
70	5525	5654
65	7884	8207
60	11758	12111
55	16881	17068
50	22455	22298
45	27839	27341

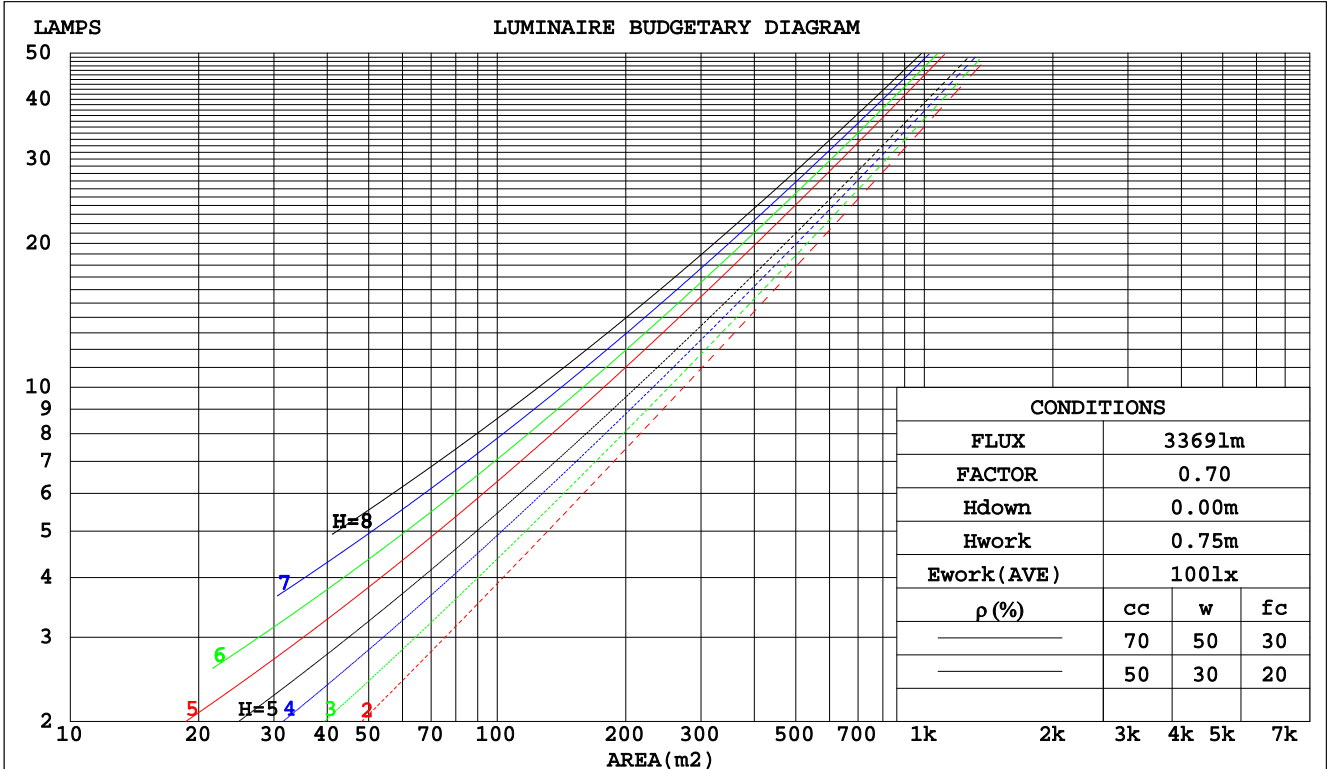
C Range: 0 - 360DEG
C Interval: 15.0DEG
Test Speed: HIGH
Temperature: 25.3DEG
Operators: Cao Chengpei
Test Date: 2014-09-02

γ Range: 0 - 90DEG
 γ Interval: 1.0DEG
Test System: EVERFINE GO-2000B_V1 SYSTEM V2.0.288
Humidity: 53.0%
Test Distance: 5.780m [K=1.0000]
Remarks:

CU AND LUMINAIRE BUDGETARY ESTIMATE DIAGRAM

Test:U:220.4V I:0.1567A P:34.18W PF:0.9895 Lamp Flux:3369.43x1 lm		
NAME: C8R-30S-840	TYPE:Downlight	SERIAL No.:
SPEC.:4000K	DIM.: φ230mm*H76mm	
MFR.: E-LITE LIGHTING CO.,LTD.		

ρcc	80%			70%			50%			30%			10%			0
ρw	50%	30%	10%	50%	30%	10%	50%	30%	10%	50%	30%	10%	50%	30%	10%	0
ρfc	20%			20%			20%			20%			20%			0
RCR	RCR:Room Cavity Ratio															
	Coefficients of Utilization(CU)															
0.0	1.19	1.19	1.19	1.16	1.16	1.16	1.11	1.11	1.11	1.06	1.06	1.06	1.02	1.02	1.02	1.00
1.0	1.08	1.05	1.02	1.06	1.03	1.00	1.02	.99	.97	.98	.96	.94	.94	.93	.91	.90
2.0	.97	.92	.88	.96	.91	.87	.92	.88	.85	.89	.86	.83	.86	.84	.81	.79
3.0	.88	.81	.76	.87	.81	.76	.84	.79	.74	.81	.77	.73	.79	.75	.72	.70
4.0	.80	.73	.67	.79	.72	.67	.76	.70	.66	.74	.69	.65	.72	.68	.64	.62
5.0	.73	.65	.60	.72	.65	.59	.70	.63	.59	.68	.62	.58	.66	.61	.58	.56
6.0	.66	.59	.53	.66	.58	.53	.64	.57	.53	.62	.57	.52	.61	.56	.52	.50
7.0	.61	.53	.48	.60	.53	.48	.59	.52	.48	.58	.52	.47	.56	.51	.47	.45
8.0	.56	.49	.44	.56	.49	.44	.54	.48	.43	.53	.47	.43	.52	.47	.43	.41
9.0	.52	.45	.40	.52	.45	.40	.51	.44	.40	.50	.44	.40	.49	.43	.39	.38
10.0	.49	.41	.37	.48	.41	.37	.47	.41	.37	.46	.40	.36	.45	.40	.36	.35



C Range: 0 - 360DEG
 C Interval: 15.0DEG
 Test Speed: HIGH
 Temperature:25.3DEG
 Operators:Cao Chengpei
 Test Date:2014-09-02

γ Range: 0 - 90DEG
 γ Interval: 1.0DEG
 Test System:EVERFINE GO-2000B_V1 SYSTEM V2.0.288
 Humidity:53.0%
 Test Distance:5.780m [K=1.0000]
 Remarks:

WEC AND CCEC

Test:U:220.4V I:0.1567A P:34.18W PF:0.9895 Lamp Flux:3369.43x1 lm		
NAME: C8R-30S-840	TYPE:Downlight	SERIAL No.:
SPEC.:4000K	DIM.: φ230mm*H76mm	
MFR.: E-LITE LIGHTING CO.,LTD.		

ρcc	80%			70%			50%			30%			10%			0
ρw	50%	30%	10%	50%	30%	10%	50%	30%	10%	50%	30%	10%	50%	30%	10%	0
ρfc	20%			20%			20%			20%			20%			0
RCR	RCR:Room Cavity Ratio						Wall Exitance Coefficients(WEC)									
0.0																
1.0	.230	.131	.042	.224	.128	.041	.211	.121	.039	.199	.115	.037	.188	.109	.035	
2.0	.225	.123	.038	.219	.121	.037	.208	.115	.036	.197	.111	.035	.188	.106	.034	
3.0	.214	.114	.034	.209	.112	.034	.200	.108	.033	.191	.104	.032	.182	.101	.031	
4.0	.203	.106	.031	.199	.104	.031	.190	.101	.030	.182	.098	.030	.175	.095	.029	
5.0	.192	.098	.028	.188	.097	.028	.180	.094	.028	.173	.092	.027	.167	.089	.027	
6.0	.181	.091	.026	.178	.090	.026	.171	.088	.026	.165	.086	.025	.159	.084	.025	
7.0	.172	.085	.024	.168	.084	.024	.162	.082	.024	.157	.080	.023	.152	.079	.023	
8.0	.162	.079	.022	.160	.079	.022	.154	.077	.022	.149	.076	.022	.144	.074	.022	
9.0	.154	.074	.021	.151	.074	.021	.147	.072	.021	.142	.071	.020	.138	.070	.020	
10.0	.146	.070	.019	.144	.069	.019	.139	.068	.019	.135	.067	.019	.131	.066	.019	

ρcc	80%			70%			50%			30%			10%			0
ρw	50%	30%	10%	50%	30%	10%	50%	30%	10%	50%	30%	10%	50%	30%	10%	0
ρfc	20%			20%			20%			20%			20%			0
RCR	RCR:Room Cavity Ratio						Ceiling Cavity Exitance Coefficients(CCEC)									
0.0	.190	.190	.190	.163	.163	.163	.111	.111	.111	.064	.064	.064	.020	.020	.020	
1.0	.175	.157	.141	.150	.135	.121	.102	.093	.084	.059	.054	.049	.019	.017	.016	
2.0	.163	.132	.106	.140	.114	.092	.096	.079	.064	.055	.046	.038	.018	.015	.012	
3.0	.154	.114	.082	.132	.098	.071	.091	.068	.050	.052	.040	.029	.017	.013	.010	
4.0	.146	.100	.065	.125	.086	.057	.086	.060	.040	.050	.035	.024	.016	.011	.008	
5.0	.138	.089	.053	.119	.077	.046	.082	.054	.032	.047	.032	.019	.015	.010	.006	
6.0	.131	.080	.044	.113	.070	.038	.078	.049	.027	.045	.029	.016	.015	.009	.005	
7.0	.125	.073	.037	.108	.063	.032	.074	.045	.023	.043	.026	.014	.014	.009	.004	
8.0	.119	.067	.032	.103	.058	.028	.071	.041	.020	.041	.024	.012	.013	.008	.004	
9.0	.114	.062	.028	.098	.054	.024	.068	.038	.017	.040	.022	.010	.013	.007	.003	
10.0	.109	.058	.024	.094	.050	.021	.065	.036	.015	.038	.021	.009	.012	.007	.003	

C Range: 0 - 360DEG
 C Interval: 15.0DEG
 Test Speed: HIGH
 Temperature:25.3DEG
 Operators:Cao Chengpei
 Test Date:2014-09-02

γ Range: 0 - 90DEG
 γ Interval: 1.0DEG
 Test System:EVERFINE GO-2000B_V1 SYSTEM V2.0.288
 Humidity:53.0%
 Test Distance:5.780m [K=1.0000]
 Remarks:

UGR(Unified Glare Rating) Table

Test:U:220.4V I:0.1567A P:34.18W PF:0.9895 Lamp Flux:3369.43x1 lm		
NAME: C8R-30S-840	TYPE:Downlight	SERIAL No.:
SPEC.:4000K	DIM.: φ230mm*H76mm	
MFR.: E-LITE LIGHTING CO.,LTD.		

ceiling/cavity	0.7	0.7	0.5	0.5	0.3	0.7	0.7	0.5	0.5	0.3
walls	0.5	0.3	0.5	0.3	0.3	0.5	0.3	0.5	0.3	0.3
working plane	0.2	0.2	0.2	0.2	0.2	0.2	0.2	0.2	0.2	0.2
Room dimensions	Viewed crosswise					Viewed endwise				
x = 2H y = 2H	21.9	23.1	22.1	23.3	23.5	21.9	23.1	22.1	23.3	23.5
3H	22.0	23.1	22.3	23.4	23.6	22.0	23.2	22.3	23.4	23.6
4H	22.0	23.1	22.3	23.3	23.5	22.0	23.1	22.3	23.3	23.6
6H	21.9	22.9	22.2	23.2	23.4	21.9	22.9	22.2	23.2	23.4
8H	21.8	22.8	22.2	23.1	23.4	21.9	22.8	22.2	23.1	23.4
12H	21.8	22.7	22.1	23.0	23.3	21.8	22.8	22.2	23.0	23.3
4H 2H	21.9	23.0	22.2	23.2	23.5	21.9	23.0	22.2	23.2	23.5
3H	22.1	23.1	22.4	23.3	23.6	22.1	23.1	22.5	23.4	23.6
4H	22.1	23.0	22.5	23.3	23.6	22.1	23.0	22.5	23.3	23.6
6H	22.0	22.8	22.4	23.1	23.5	22.1	22.8	22.4	23.1	23.5
8H	22.0	22.7	22.4	23.1	23.4	22.0	22.7	22.4	23.1	23.4
12H	22.0	22.6	22.4	23.0	23.4	22.0	22.6	22.4	23.0	23.4
8H 4H	22.0	22.7	22.4	23.1	23.5	22.0	22.7	22.4	23.1	23.5
6H	22.0	22.5	22.4	22.9	23.3	22.0	22.5	22.4	22.9	23.4
8H	21.9	22.4	22.4	22.8	23.3	21.9	22.4	22.4	22.9	23.3
12H	21.9	22.3	22.4	22.8	23.2	21.9	22.4	22.4	22.8	23.3
12H 4H	22.0	22.6	22.4	23.0	23.4	22.0	22.6	22.4	23.0	23.4
6H	21.9	22.4	22.4	22.8	23.3	21.9	22.4	22.4	22.8	23.3
8H	21.9	22.3	22.4	22.8	23.2	21.9	22.3	22.4	22.8	23.2
Variations with the observer position at spacings:										
S = 1.0H	+ 1.1 / - 1.6					+ 1.1 / - 1.5				
1.5H	+ 0.6 / - 0.8					+ 0.6 / - 0.8				
2.0H	+ 2.4 / - 3.0					+ 2.3 / - 3.0				

CIE Pub.117 Corrected 3369 lm Total Lamp Luminous Flux.(8log(F/F0) = 4.2)

C Range: 0 - 360DEG
 C Interval: 15.0DEG
 Test Speed: HIGH
 Temperature:25.3DEG
 Operators:Cao Chengpei
 Test Date:2014-09-02

γ Range: 0 - 90DEG
 γ Interval: 1.0DEG
 Test System:EVERFINE GO-2000B_V1 SYSTEM V2.0.288
 Humidity:53.0%
 Test Distance:5.780m [K=1.0000]
 Remarks:

UTILIZATION FACTORS TABLE

Test:U:220.4V I:0.1567A P:34.18W PF:0.9895 Lamp Flux:3369.43x1 lm		
NAME: C8R-30S-840	TYPE:Downlight	SERIAL No.:
SPEC.:4000K	DIM.: φ230mm*H76mm	
MFR.: E-LITE LIGHTING CO.,LTD.		

REFLECTANCE										
Ceiling	0.8	0.8	0.8	0.7	0.7	0.7	0.5	0.5	0.5	0
Walls	0.7	0.5	0.3	0.7	0.5	0.3	0.7	0.5	0.3	0
Working plane	0.2	0.2	0.2	0.2	0.2	0.2	0.2	0.2	0.2	0
ROOM INDEX	UTILIZATION FACTORS(PERCENT) $k(RI) \times RCR = 5$									
k = 0.60	69	59	53	68	59	53	67	59	53	48
0.80	79	70	64	78	69	64	76	68	63	58
1.00	87	78	72	86	78	72	84	78	72	66
1.25	93	85	80	92	84	79	89	83	78	73
1.50	97	90	85	96	89	84	93	87	83	77
2.00	102	96	91	101	95	91	98	93	89	83
2.50	105	99	95	103	98	94	100	95	92	85
3.00	107	102	98	105	101	97	102	98	95	88
4.00	110	106	103	108	104	101	104	101	99	91
5.00	112	108	105	110	106	104	105	103	101	92
ROOM INDEX	UF(total)									Direct
According to DIN EN 13032-2 2004			Suspended				SHRNOM = 1.25			

C Range: 0 - 360DEG
 C Interval: 15.0DEG
 Test Speed: HIGH
 Temperature:25.3DEG
 Operators:Cao Chengpei
 Test Date:2014-09-02

γ Range: 0 - 90DEG
 γ Interval: 1.0DEG
 Test System:EVERFINE GO-2000B_V1 SYSTEM V2.0.288
 Humidity:53.0%
 Test Distance:5.780m [K=1.0000]
 Remarks:

ISOCANDELA DIAGRAM

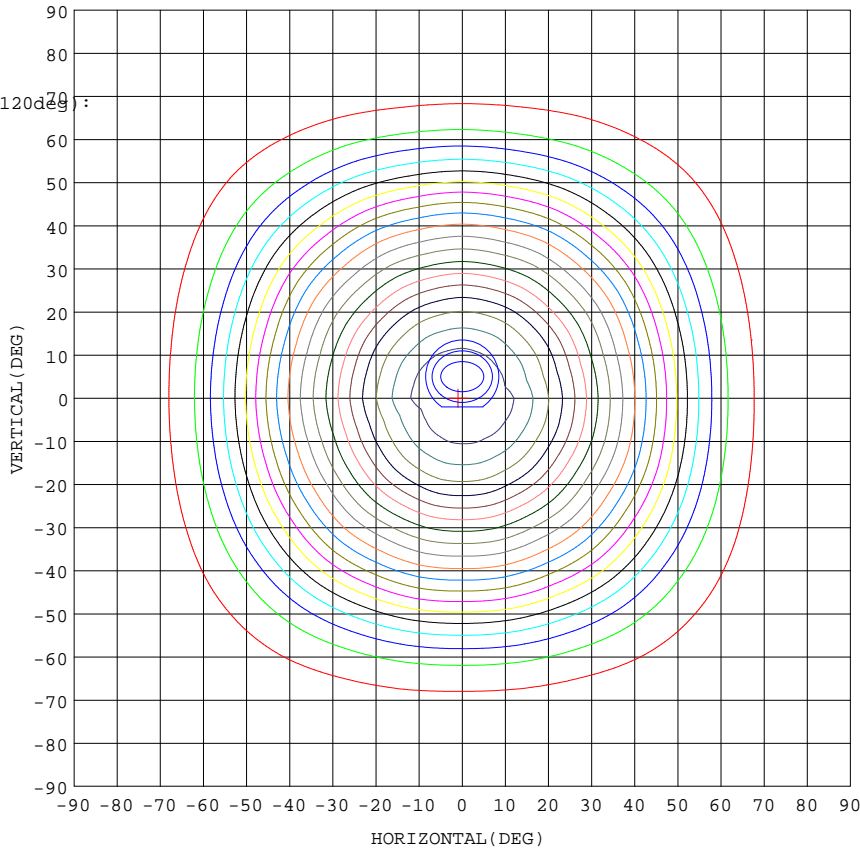
Test:U:220.4V I:0.1567A P:34.18W PF:0.9895 Lamp Flux:3369.43x1 lm		
NAME: C8R-30S-840	TYPE:Downlight	SERIAL No.:
SPEC.:4000K	DIM.: φ230mm*H76mm	
MFR.: E-LITE LIGHTING CO.,LTD.		

Conical surface Flux(90deg):

2511.8 lm
%lum = 74.5%
%lamp = 74.5%

Conical surface Flux(120deg):

3171.2 lm
%lum = 94.1%
%lamp = 94.1%



1. AVG=1997,MIN=1971
2. AVG=1990,MIN=1945
3. AVG=1980,MIN=1902

Imax:2039(H-1.0,V0.0)
(At:C=180.0,Gamma=1.0)

UNIT: cd

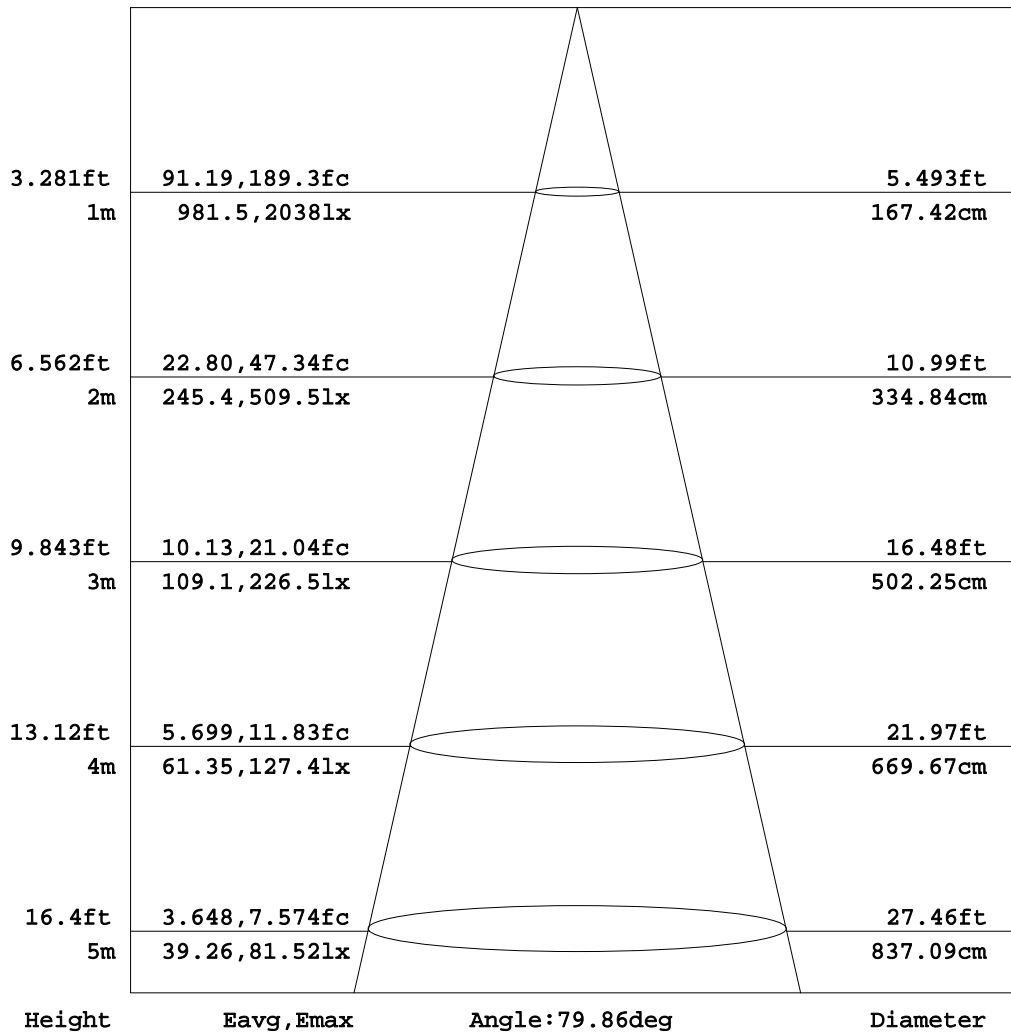
C Range: 0 - 360DEG
C Interval: 15.0DEG
Test Speed: HIGH
Temperature:25.3DEG
Operators:Cao Chengpei
Test Date:2014-09-02

γ Range: 0 - 90DEG
γ Interval: 1.0DEG
Test System:EVERFINE GO-2000B_V1 SYSTEM V2.0.288
Humidity:53.0%
Test Distance:5.780m [K=1.0000]
Remarks:

AAI Figure

Test:U:220.4V I:0.1567A P:34.18W PF:0.9895 Lamp Flux:3369.43x1 lm		
NAME: C8R-30S-840	TYPE:Downlight	SERIAL No.:
SPEC.:4000K	DIM.: φ230mm*H76mm	
MFR.: E-LITE LIGHTING CO.,LTD.		

Flux out:2171 lm



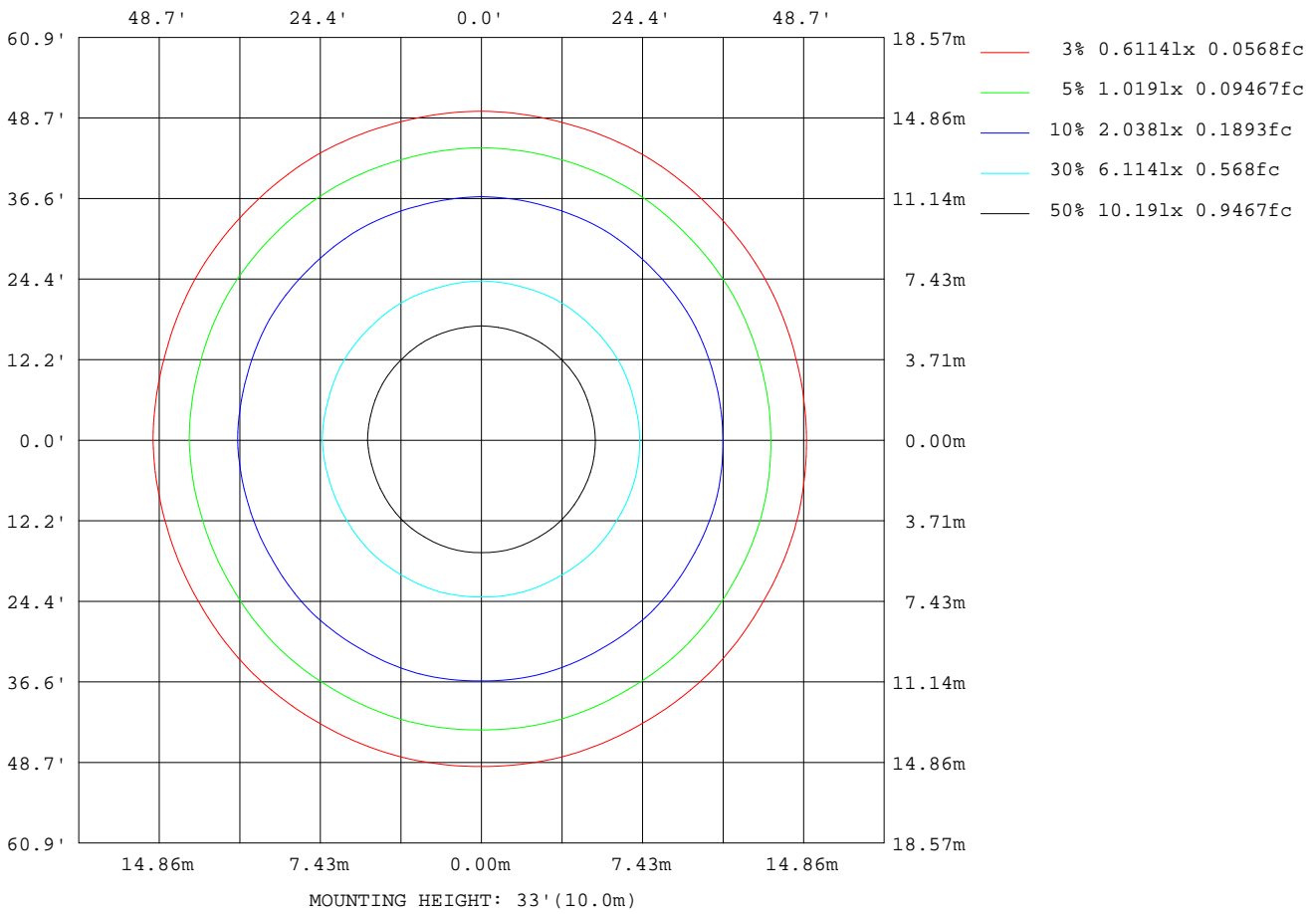
Note:The Curves indicate the illuminated area and the average illumination when the luminaire is at different distance.

C Range: 0 - 360DEG
C Interval: 15.0DEG
Test Speed: HIGH
Temperature:25.3DEG
Operators:Cao Chengpei
Test Date:2014-09-02

γ Range: 0 - 90DEG
γ Interval: 1.0DEG
Test System:EVERFINE GO-2000B_V1 SYSTEM V2.0.288
Humidity:53.0%
Test Distance:5.780m [K=1.0000]
Remarks:

ISOLUX DIAGRAM

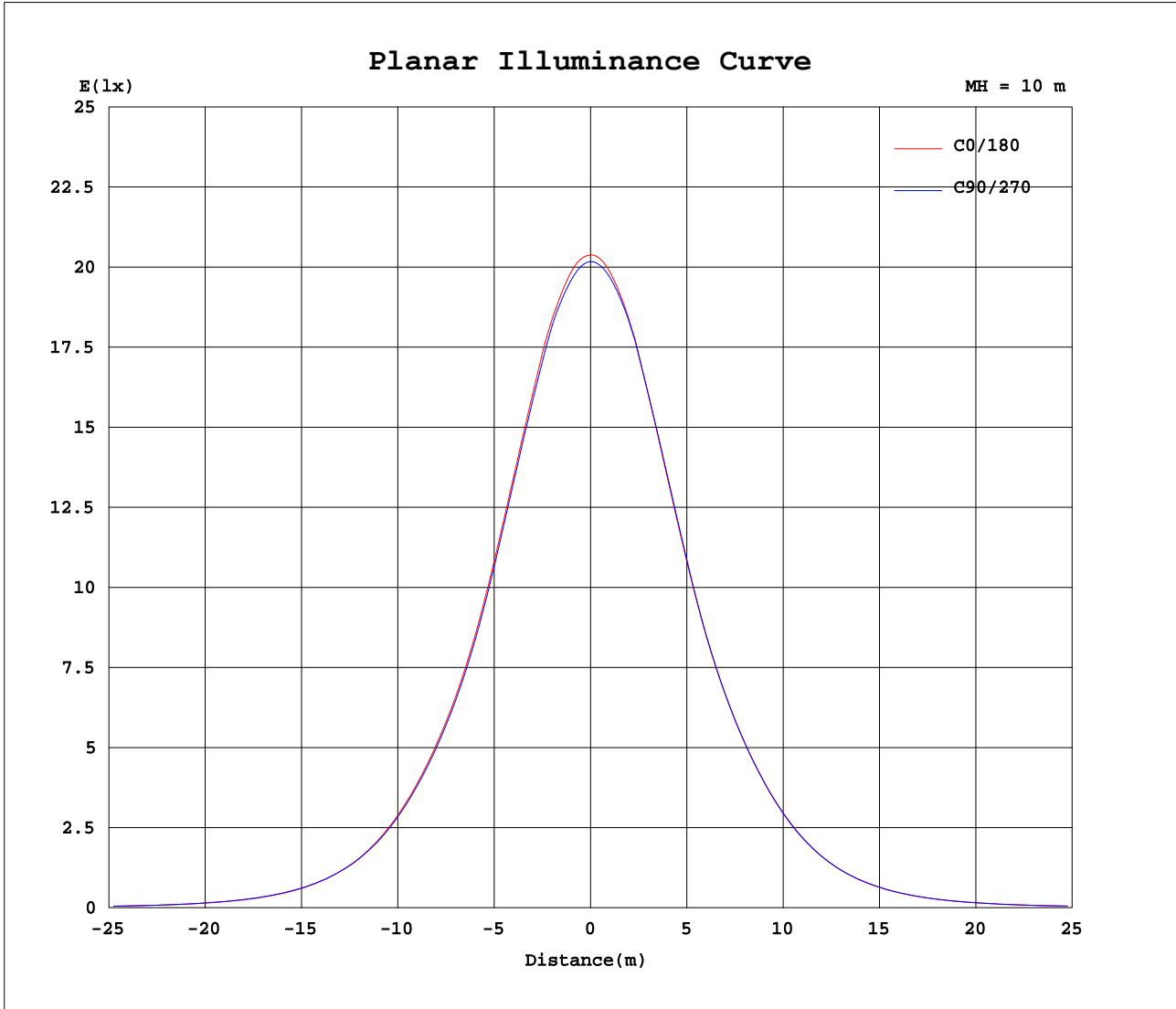
Test:U:220.4V I:0.1567A P:34.18W PF:0.9895 Lamp Flux:3369.43x1 lm		
NAME: C8R-30S-840	TYPE:Downlight	SERIAL No.:
SPEC.:4000K	DIM.: φ230mm*H76mm	
MFR.: E-LITE LIGHTING CO.,LTD.		



C Range: 0 - 360DEG
 C Interval: 15.0DEG
 Test Speed: HIGH
 Temperature:25.3DEG
 Operators:Cao Chengpei
 Test Date:2014-09-02

γ Range: 0 - 90DEG
 γ Interval: 1.0DEG
 Test System:EVERFINE GO-2000B_V1 SYSTEM V2.0.288
 Humidity:53.0%
 Test Distance:5.780m [K=1.0000]
 Remarks:

Planar Illuminance Curve



C Range: 0 - 360DEG
 C Interval: 15.0DEG
 Test Speed: HIGH
 Temperature: 25.3DEG
 Operators: Cao Chengpei
 Test Date: 2014-09-02

γ Range: 0 - 90DEG
 γ Interval: 1.0DEG
 Test System: EVERFINE GO-2000B_V1 SYSTEM V2.0.288
 Humidity: 53.0%
 Test Distance: 5.780m [K=1.0000]
 Remarks:

LUMINOUS DISTRIBUTION INTENSITY DATA

Test:U:220.4V I:0.1567A P:34.18W PF:0.9895 Lamp Flux:3369.43x1 lm		
NAME: C8R-30S-840	TYPE:Downlight	SERIAL No.:
SPEC.:4000K	DIM.: φ230mm*H76mm	
MFR.: E-LITE LIGHTING CO.,LTD.		

Table--1

UNIT: cd

C (DEG) \ γ (DEG)	0	15	30	45	60	75	90	105	120	135	150	165	180	195	210	225	240	255	270
0	2038	2033	2029	2026	2023	2020	2017	2015	2012	2011	2009	2007	2038	2033	2029	2026	2023	2020	2017
5	2021	2017	2012	2009	2003	2000	1995	1994	1991	1990	1989	1989	2021	2017	2015	2011	2009	2005	2003
10	1966	1962	1954	1952	1947	1947	1945	1945	1941	1939	1935	1935	1966	1962	1962	1959	1959	1956	1958
15	1871	1868	1857	1855	1847	1848	1844	1846	1841	1841	1834	1835	1868	1862	1865	1863	1868	1863	1866
20	1735	1732	1721	1720	1713	1716	1713	1716	1710	1709	1701	1701	1731	1725	1730	1729	1734	1732	1737
25	1570	1566	1556	1556	1548	1551	1547	1551	1545	1547	1539	1541	1567	1560	1566	1564	1571	1569	1575
30	1382	1379	1367	1368	1360	1363	1358	1362	1357	1361	1355	1358	1384	1376	1382	1379	1386	1382	1387
35	1198	1200	1186	1190	1179	1185	1177	1184	1176	1185	1177	1185	1209	1200	1209	1201	1210	1202	1210
40	1021	1023	1009	1014	1003	1010	1001	1009	1003	1011	1004	1013	1035	1026	1034	1026	1034	1026	1033
45	817	822	810	815	803	811	803	813	807	816	807	817	838	829	838	828	836	824	833
50	599	607	597	603	592	601	595	605	598	605	596	604	622	616	625	615	621	612	621
55	402	405	401	406	403	409	407	410	406	409	404	408	421	417	423	419	424	419	423
60	244	246	244	250	250	255	251	254	251	252	248	250	258	253	258	257	264	260	262
65	138	141	140	143	142	145	144	146	143	143	139	140	145	143	147	146	149	148	150
70	78.5	80.1	79.0	80.4	79.1	80.9	80.3	82.0	80.1	80.4	77.9	78.7	81.4	80.6	82.7	82.2	83.5	82.2	83.8
75	35.9	37.0	35.9	36.6	35.3	36.0	35.2	36.2	34.9	35.4	33.9	35.0	36.9	36.5	37.9	37.4	38.5	37.8	38.9
80	8.74	8.80	8.85	8.99	9.09	9.21	9.30	9.40	9.37	9.35	9.24	9.16	9.14	8.96	8.83	8.69	8.62	8.55	8.54
85	8.47	8.53	8.59	8.70	8.81	8.92	9.01	9.07	9.06	9.03	8.94	8.86	8.84	8.70	8.58	8.46	8.39	8.31	8.26
90	0.52	0.40	0.33	0.28	0.26	0.25	0.25	0.25	0.25	0.24	0.24	0.24	0.18	0.19	0.18	0.20	0.24	0.38	0.59

C Range: 0 - 360DEG
 C Interval: 15.0DEG
 Test Speed: HIGH
 Temperature:25.3DEG
 Operators:Cao Chengpei
 Test Date:2014-09-02

γ Range: 0 - 90DEG
 γ Interval: 1.0DEG
 Test System:EVERFINE GO-2000B_V1 SYSTEM V2.0.288
 Humidity:53.0%
 Test Distance:5.780m [K=1.0000]
 Remarks:

LUMINOUS DISTRIBUTION INTENSITY DATA

Test:U:220.4V I:0.1567A P:34.18W PF:0.9895 Lamp Flux:3369.43x1 lm		
NAME: C8R-30S-840	TYPE:Downlight	SERIAL No.:
SPEC.:4000K	DIM.: φ 230mm*H76mm	
MFR.: E-LITE LIGHTING CO.,LTD.		

Table--2

UNIT: cd

γ (DEG) \ C (DEG)	285	300	315	330	345																
0	2015	2012	2011	2009	2007																
5	1999	1997	1994	1993	1991																
10	1955	1954	1948	1946	1940																
15	1862	1863	1856	1854	1846																
20	1733	1734	1727	1726	1717																
25	1570	1572	1565	1566	1556																
30	1382	1387	1379	1380	1370																
35	1202	1209	1198	1202	1189																
40	1025	1032	1021	1025	1013																
45	824	832	820	825	812																
50	613	618	605	608	596																
55	417	418	409	409	401																
60	256	257	249	250	245																
65	147	146	142	142	138																
70	82.7	83.2	80.3	79.9	78.1																
75	38.3	38.9	37.2	37.3	36.2																
80	8.50	8.50	8.47	8.50	8.49																
85	8.21	8.19	8.18	8.20	8.21																
90	0.92	1.12	1.32	1.34	1.35																

C Range: 0 - 360DEG
C Interval: 15.0DEG
Test Speed: HIGH
Temperature:25.3DEG
Operators:Cao Chengpei
Test Date:2014-09-02

γ Range: 0 - 90DEG
 γ Interval: 1.0DEG
Test System:EVERFINE GO-2000B_V1 SYSTEM V2.0.288
Humidity:53.0%
Test Distance:5.780m [K=1.0000]
Remarks:

Photometric Data Table [cd]

G/C	0.0	15.0	30.0	45.0	60.0	75.0	90.0	105.0	120.0	135.0
0.0	2038	2033	2029	2026	2023	2020	2017	2015	2012	2011
3.0	2033	2030	2026	2021	2016	2013	2009	2007	2004	2003
6.0	2012	2009	2003	1999	1994	1991	1987	1985	1982	1982
9.0	1979	1975	1968	1965	1960	1959	1957	1956	1952	1951
12.0	1937	1932	1925	1922	1916	1916	1913	1914	1910	1910
15.0	1871	1868	1857	1855	1847	1848	1844	1846	1841	1841
18.0	1792	1789	1779	1777	1770	1772	1769	1772	1766	1765
21.0	1704	1700	1690	1689	1682	1685	1682	1685	1679	1679
24.0	1605	1601	1590	1590	1583	1586	1583	1587	1581	1581
27.0	1496	1493	1481	1481	1473	1476	1472	1476	1470	1473
30.0	1382	1379	1367	1368	1360	1363	1358	1362	1357	1361
33.0	1270	1270	1256	1260	1249	1255	1247	1254	1247	1254
36.0	1164	1165	1151	1156	1145	1151	1142	1150	1142	1151
39.0	1058	1059	1046	1051	1040	1046	1038	1046	1039	1047
42.0	943.0	945.6	932.8	937.3	926.7	932.8	924.6	933.4	927.1	935.9
45.0	817.5	822.4	809.7	815.2	803.5	811.0	802.8	813.3	806.8	815.8
48.0	686.4	692.7	681.8	687.1	676.4	683.9	677.6	688.1	681.8	689.5
51.0	557.6	564.3	552.8	560.7	553.8	560.0	551.9	564.1	557.4	563.8
54.0	439.3	443.4	438.1	442.8	439.2	445.2	442.5	447.2	442.4	446.2
57.0	333.2	335.7	332.0	337.7	337.2	342.2	339.7	342.2	339.0	341.2
60.0	244.1	246.2	243.6	249.5	250.0	254.6	251.5	254.2	250.6	252.1
63.0	174.2	176.4	174.8	179.3	178.9	182.8	181.0	183.2	179.6	180.3
66.0	123.2	126.6	124.6	128.0	125.7	129.7	128.0	131.2	127.6	128.5
69.0	87.94	89.93	88.80	90.28	89.01	91.05	90.48	92.40	90.30	90.48
72.0	61.07	62.40	61.27	62.40	61.05	62.46	61.78	63.24	61.55	61.99
75.0	35.94	37.01	35.88	36.62	35.26	35.95	35.24	36.21	34.90	35.41
78.0	11.30	12.12	10.96	11.44	10.53	10.92	10.09	10.41	10.01	10.22
81.0	8.644	8.694	8.754	8.881	8.985	9.106	9.187	9.278	9.262	9.231
84.0	8.500	8.561	8.625	8.738	8.843	8.961	9.040	9.110	9.101	9.071
87.0	8.367	8.415	8.465	8.566	8.661	8.767	8.852	8.923	8.916	8.877
90.0	0.5220	0.3993	0.3307	0.2766	0.2620	0.2516	0.2516	0.2475	0.2475	0.2433
G/C	150.0	165.0	180.0	195.0	210.0	225.0	240.0	255.0	270.0	285.0
0.0	2009	2007	2038	2033	2029	2026	2023	2020	2017	2015
3.0	2001	2001	2033	2028	2025	2021	2018	2015	2012	2009
6.0	1980	1980	2013	2008	2007	2003	2001	1998	1996	1993
9.0	1947	1948	1980	1975	1975	1971	1971	1968	1969	1965
12.0	1905	1904	1936	1931	1933	1930	1932	1929	1930	1926
15.0	1834	1835	1868	1862	1865	1863	1868	1863	1866	1862
18.0	1758	1758	1788	1783	1787	1785	1791	1788	1792	1789
21.0	1670	1671	1700	1694	1700	1698	1704	1701	1707	1703
24.0	1573	1574	1601	1595	1601	1599	1606	1604	1610	1605
27.0	1466	1468	1494	1488	1494	1491	1498	1495	1501	1495
30.0	1355	1358	1384	1376	1382	1379	1386	1382	1387	1382
33.0	1246	1254	1277	1269	1277	1271	1279	1272	1280	1273
36.0	1143	1152	1175	1166	1175	1167	1175	1167	1176	1167
39.0	1040	1049	1071	1063	1070	1063	1071	1063	1070	1062
42.0	928.8	937.7	959.9	950.6	958.6	949.8	957.9	948.4	956.0	947.9
45.0	807.2	817.0	837.8	828.8	837.8	828.0	835.6	824.4	833.2	824.4
48.0	680.2	689.2	708.8	701.8	710.4	700.5	706.8	696.7	705.1	697.6
51.0	551.7	562.3	579.9	573.8	582.9	573.3	579.5	570.2	578.8	570.8
54.0	440.5	444.9	458.7	454.7	460.8	456.7	460.8	455.3	460.3	454.5
57.0	336.7	340.2	350.1	346.1	351.0	349.3	354.8	350.5	352.7	347.1
60.0	247.7	250.5	258.2	253.4	258.1	257.3	263.5	259.8	261.7	255.7
63.0	176.1	177.6	183.2	180.9	184.8	184.5	188.7	186.6	188.3	184.1
66.0	123.5	125.3	129.7	127.8	131.9	130.2	132.8	131.0	133.3	130.8
69.0	87.60	88.33	91.32	90.52	92.98	92.24	93.86	92.33	94.20	92.94
72.0	60.07	60.93	63.22	62.52	64.34	63.72	65.10	63.92	65.47	64.42
75.0	33.94	35.00	36.93	36.53	37.90	37.40	38.47	37.75	38.94	38.29
78.0	9.854	10.33	11.58	11.04	11.70	11.08	12.16	11.48	12.53	11.94
81.0	9.131	9.041	9.031	8.860	8.732	8.598	8.519	8.454	8.426	8.382
84.0	8.982	8.904	8.879	8.728	8.611	8.495	8.414	8.335	8.277	8.233
87.0	8.788	8.698	8.690	8.554	8.455	8.344	8.279	8.209	8.165	8.105
90.0	0.2412	0.2412	0.1809	0.1851	0.1830	0.2038	0.2412	0.3806	0.5864	0.9150
G/C	300.0	315.0	330.0	345.0						
0.0	2012	2011	2009	2007						
3.0	2007	2005	2003	2002						
6.0	1991	1987	1986	1983						
9.0	1964	1959	1957	1952						
12.0	1925	1919	1917	1911						
15.0	1863	1856	1854	1846						
18.0	1791	1783	1781	1772						
21.0	1704	1697	1696	1686						

C Range: 0 - 360DEG

C Interval: 15.0DEG

Test Speed: HIGH

Temperature: 25.3DEG

Operators: Cao Chengpei

Test Date: 2014-09-02

γ Range: 0 - 90DEG

γ Interval: 1.0DEG

Test System: EVERFINE GO-2000B_V1 SYSTEM V2.0.288

Humidity: 53.0%

Test Distance: 5.780m [K=1.0000]

Remarks:

Photometric Data Table [cd]

24.0	1608	1601	1601	1591
27.0	1499	1492	1493	1483
30.0	1387	1379	1380	1370
33.0	1279	1269	1272	1260
36.0	1175	1163	1167	1155
39.0	1069	1058	1062	1050
42.0	955.2	944.0	948.5	936.2
45.0	832.4	819.8	824.7	812.1
48.0	703.9	690.9	694.5	683.0
51.0	576.1	562.9	565.8	552.0
54.0	455.7	446.5	446.0	438.3
57.0	347.8	339.8	339.9	333.6
60.0	256.5	249.4	250.4	245.0
63.0	183.9	178.7	179.0	175.0
66.0	131.6	126.4	127.0	122.8
69.0	93.42	90.04	89.57	87.43
72.0	65.02	62.56	62.52	60.97
75.0	38.88	37.17	37.25	36.19
78.0	12.83	11.97	12.59	12.05
81.0	8.371	8.353	8.382	8.384
84.0	8.216	8.202	8.231	8.238
87.0	8.100	8.082	8.113	8.117
90.0	1.123	1.318	1.339	1.350

C Range: 0 - 360DEG
 C Interval: 15.0DEG
 Test Speed: HIGH
 Temperature: 25.3DEG
 Operators: Cao Chengpei
 Test Date: 2014-09-02

γ Range: 0 - 90DEG
 γ Interval: 1.0DEG
 Test System: EVERFINE GO-2000B_V1 SYSTEM V2.0.288
 Humidity: 53.0%
 Test Distance: 5.780m [K=1.0000]
 Remarks: