

LED Downlight CATO Series C8R-20S-830



Light Output Ratio:	100.0%	
Luminaire Power:	21.43 W	
SHR Nominal:	1.00	Calculated using the TM5
SHR Maximum:	1.15	fine grid method.

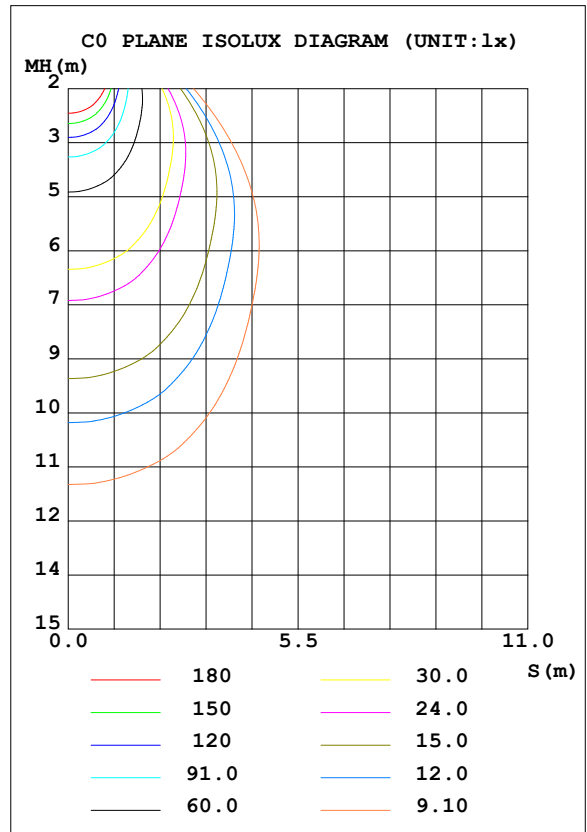
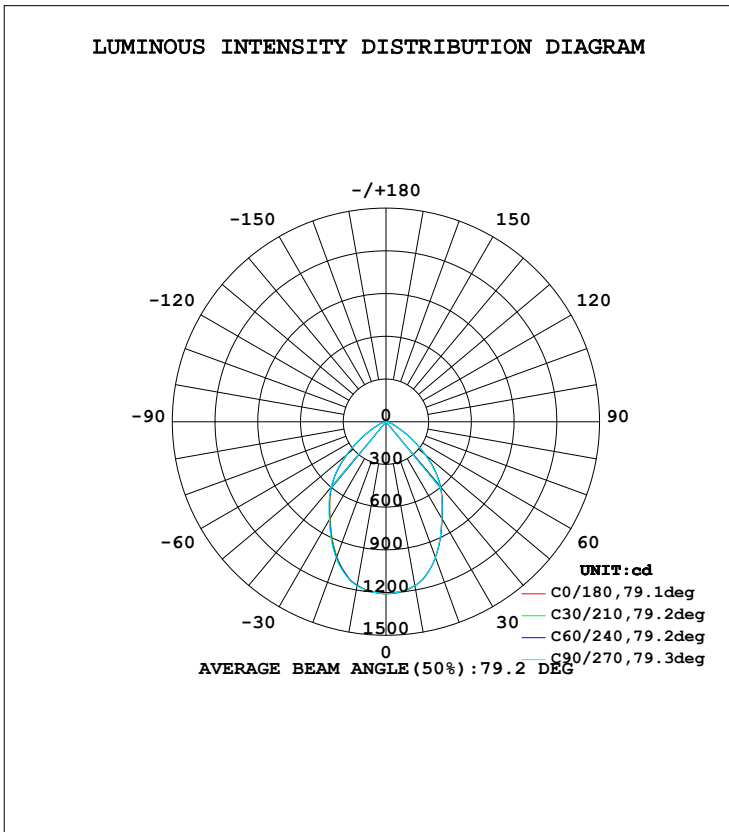
C Range: 0 - 360DEG
 C Interval: 15.0DEG
 Test Speed: HIGH
 Temperature: 25.3DEG
 Operators: Cao Chengpei
 Test Date: 2014-09-02

γ Range: 0 - 90DEG
 γ Interval: 1.0DEG
 Test System: EVERFINE GO-2000B_V1 SYSTEM V2.0.288
 Humidity: 53.0%
 Test Distance: 5.780m [K=1.0000]
 Remarks:

LUMINAIRE PHOTOMETRIC TEST REPORT

Test:U:220.3V I:0.1014A P:21.43W PF:0.9591 Lamp Flux:1969.22x1 lm		
NAME: C8R-20S-830	TYPE:Downlight	SERIAL No.:
SPEC.:3000K	DIM.: φ230mm*H76mm	
MFR.: E-LITE LIGHTING CO.,LTD.		

DATA OF LAMP		PHOTOMETRIC DATA			
MODEL	SAMSUNG-3000K	Imax (cd)	1208	S/MH (C0/180)	1.02
NOMINAL POWER (W)	22	LOR (%)	100.0	S/MH (C90/270)	1.03
RATED VOLTAGE (V)	220	TOTAL FLUX (lm)	1969.2	η UP, DN (C0-180)	0.0, 49.8
NOMINAL FLUX (lm)	1969.22	CIE CLASS	DIRECT	η UP, DN (C180-360)	0.0, 50.2
LAMPS INSIDE	1	η up (%)	0.0	CIBSE SHR NOM	1.00
TEST VOLTAGE (V)	220	η down (%)	100.0	CIBSE SHR MAX	1.15



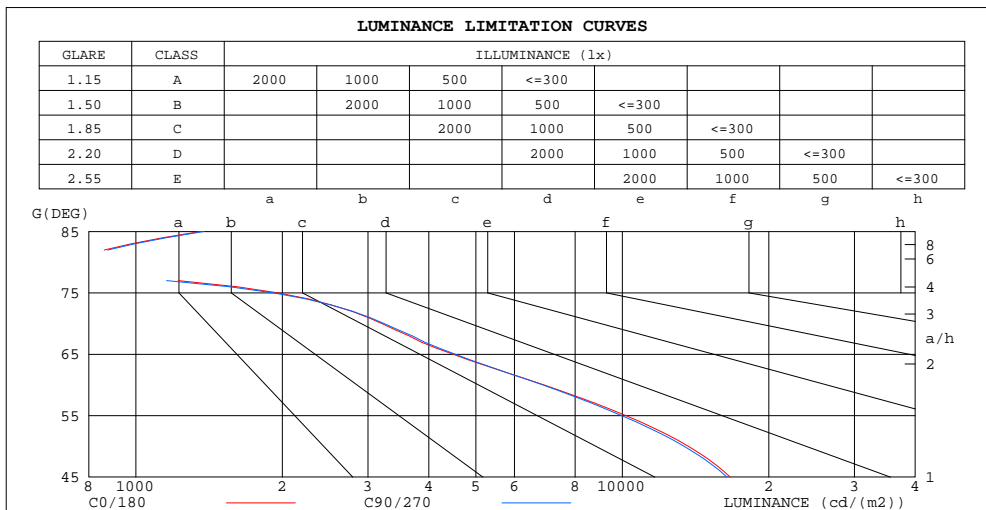
C Range: 0 - 360DEG
 C Interval: 15.0DEG
 Test Speed: HIGH
 Temperature: 25.3DEG
 Operators: Cao Chengpei
 Test Date: 2014-09-02

γ Range: 0 - 90DEG
 γ Interval: 1.0DEG
 Test System: EVERFINE GO-2000B_V1 SYSTEM V2.0.288
 Humidity: 53.0%
 Test Distance: 5.780m [K=1.0000]
 Remarks:

**ZONAL FLUX DIAGRAM
AND LUMINANCE LIMITATION CURVES**

ZONAL FLUX DIAGRAM:

γ	C0	C45	C90	C135	C180	C225	C270	C315	γ	Φ zone	Φ total	Φ lum,lamp
10	1169	1169	1168	1165	1165	1167	1171	1172	0- 10	113.4	113.4	5.76,5.76
20	1016	1017	1013	1010	1008	1011	1023	1021	10- 20	310.1	423.4	21.5,21.5
30	789.2	788.2	783.9	783.2	785.1	787.7	796.6	793.8	20- 30	414.3	837.7	42.5,42.5
40	597.7	597.3	591.5	590.2	593.8	594.9	602.5	602.1	30- 40	431.7	1269	64.5,64.5
50	365.0	365.6	357.8	354.9	356.3	357.0	366.3	367.2	40- 50	372.0	1641	83.4,83.4
60	143.3	145.4	142.6	139.1	138.2	139.1	146.5	145.0	50- 60	216.8	1858	94.4,94.4
70	45.53	46.79	46.03	44.88	44.21	44.53	46.39	46.14	60- 70	83.10	1941	98.6,98.6
80	5.065	5.047	5.154	5.269	5.169	5.264	5.404	5.225	70- 80	22.84	1964	99.7,99.7
90	0.2662	0.1373	0.1331	0.1289	0.0894	0.1123	0.3702	0.7674	80- 90	5.066	1969	100,100
100									90-100			
110									100-110			
120									110-120			
130									120-130			
140									130-140			
150									140-150			
160									150-160			
170									160-170			
180									170-180			
DEG	LUMINOUS INTENSITY:cd									UNIT:lm		



LUMINANCE cd/(m2)		
G(DEG)	C0/180	C90/270
85	1360	1381
80	702	715
75	1959	1921
70	3206	3241
65	4485	4534
60	6902	6867
55	10174	9971
50	13675	13405
45	16664	16410

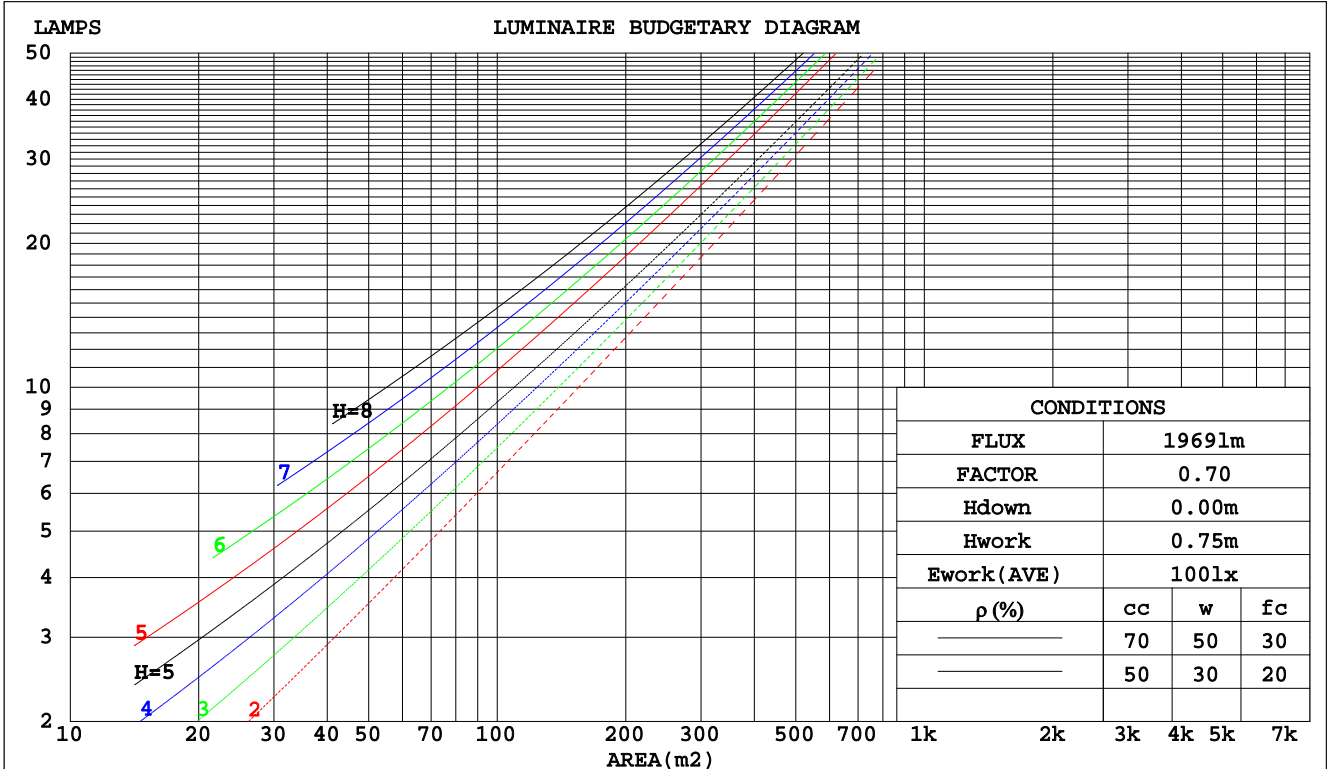
C Range: 0 - 360DEG
 C Interval: 15.0DEG
 Test Speed: HIGH
 Temperature:25.3DEG
 Operators:Cao Chengpei
 Test Date:2014-09-02

γ Range: 0 - 90DEG
 γ Interval: 1.0DEG
 Test System:EVERFINE GO-2000B_V1 SYSTEM V2.0.288
 Humidity:53.0%
 Test Distance:5.780m [K=1.0000]
 Remarks:

CU AND LUMINAIRE BUDGETARY ESTIMATE DIAGRAM

Test:U:220.3V I:0.1014A P:21.43W PF:0.9591 Lamp Flux:1969.22x1 lm		
NAME: C8R-20S-830	TYPE:Downlight	SERIAL No.:
SPEC.:3000K	DIM.: φ230mm*H76mm	
MFR.: E-LITE LIGHTING CO.,LTD.		

ρcc	80%			70%			50%			30%			10%			0
ρw	50%	30%	10%	50%	30%	10%	50%	30%	10%	50%	30%	10%	50%	30%	10%	0
ρfc	20%			20%			20%			20%			20%			0
RCR	RCR:Room Cavity Ratio															
	Coefficients of Utilization(CU)															
0.0	1.19	1.19	1.19	1.16	1.16	1.16	1.11	1.11	1.11	1.06	1.06	1.06	1.02	1.02	1.02	1.00
1.0	1.08	1.05	1.02	1.06	1.03	1.00	1.02	.99	.97	.98	.96	.94	.94	.93	.92	.90
2.0	.98	.92	.88	.96	.91	.87	.92	.88	.85	.89	.86	.83	.86	.84	.81	.79
3.0	.88	.82	.76	.87	.81	.76	.84	.79	.75	.81	.77	.73	.79	.75	.72	.70
4.0	.80	.73	.67	.79	.72	.67	.76	.71	.66	.74	.69	.65	.72	.68	.64	.63
5.0	.73	.65	.60	.72	.65	.59	.70	.64	.59	.68	.63	.58	.66	.62	.58	.56
6.0	.67	.59	.54	.66	.59	.53	.64	.58	.53	.63	.57	.53	.61	.56	.52	.50
7.0	.61	.54	.48	.60	.53	.48	.59	.53	.48	.58	.52	.48	.56	.51	.47	.46
8.0	.57	.49	.44	.56	.49	.44	.55	.48	.44	.53	.48	.43	.52	.47	.43	.41
9.0	.52	.45	.40	.52	.45	.40	.51	.44	.40	.50	.44	.40	.49	.43	.40	.38
10.0	.49	.42	.37	.48	.41	.37	.47	.41	.37	.46	.41	.37	.46	.40	.36	.35



C Range: 0 - 360DEG
 C Interval: 15.0DEG
 Test Speed: HIGH
 Temperature:25.3DEG
 Operators:Cao Chengpei
 Test Date:2014-09-02

γ Range: 0 - 90DEG
 γ Interval: 1.0DEG
 Test System:EVERFINE GO-2000B_V1 SYSTEM V2.0.288
 Humidity:53.0%
 Test Distance:5.780m [K=1.0000]
 Remarks:

WEC AND CCEC

Test:U:220.3V I:0.1014A P:21.43W PF:0.9591 Lamp Flux:1969.22x1 lm		
NAME: C8R-20S-830	TYPE:Downlight	SERIAL No.:
SPEC.:3000K	DIM.: φ230mm*H76mm	
MFR.: E-LITE LIGHTING CO.,LTD.		

ρcc	80%			70%			50%			30%			10%			0
ρw	50%	30%	10%	50%	30%	10%	50%	30%	10%	50%	30%	10%	50%	30%	10%	0
ρfc	20%			20%			20%			20%			20%			0
RCR	RCR:Room Cavity Ratio						Wall Exitance Coefficients(WEC)									
0.0																
1.0	.230	.131	.041	.223	.127	.040	.210	.120	.038	.198	.114	.037	.187	.108	.035	
2.0	.224	.123	.038	.218	.120	.037	.207	.115	.036	.197	.110	.035	.187	.106	.033	
3.0	.214	.114	.034	.208	.112	.034	.199	.108	.033	.190	.104	.032	.182	.101	.031	
4.0	.202	.105	.031	.198	.104	.031	.189	.100	.030	.182	.097	.029	.174	.095	.029	
5.0	.191	.098	.028	.187	.096	.028	.180	.094	.028	.173	.091	.027	.166	.089	.027	
6.0	.181	.091	.026	.177	.090	.026	.171	.087	.025	.164	.085	.025	.159	.083	.025	
7.0	.171	.085	.024	.168	.084	.024	.162	.082	.024	.156	.080	.023	.151	.078	.023	
8.0	.162	.079	.022	.159	.078	.022	.154	.077	.022	.149	.075	.022	.144	.074	.022	
9.0	.153	.074	.021	.151	.074	.021	.146	.072	.020	.142	.071	.020	.137	.070	.020	
10.0	.146	.070	.019	.143	.069	.019	.139	.068	.019	.135	.067	.019	.131	.066	.019	

ρcc	80%			70%			50%			30%			10%			0
ρw	50%	30%	10%	50%	30%	10%	50%	30%	10%	50%	30%	10%	50%	30%	10%	0
ρfc	20%			20%			20%			20%			20%			0
RCR	RCR:Room Cavity Ratio						Ceiling Cavity Exitance Coefficients(CCEC)									
0.0	.190	.190	.190	.163	.163	.163	.111	.111	.111	.064	.064	.064	.020	.020	.020	
1.0	.175	.157	.141	.150	.135	.121	.102	.093	.084	.059	.054	.049	.019	.017	.016	
2.0	.163	.132	.106	.140	.114	.092	.096	.079	.064	.055	.046	.038	.018	.015	.012	
3.0	.154	.114	.082	.132	.098	.071	.090	.068	.050	.052	.040	.029	.017	.013	.010	
4.0	.145	.100	.065	.125	.086	.057	.086	.060	.040	.050	.035	.024	.016	.011	.008	
5.0	.138	.089	.053	.118	.077	.046	.082	.054	.033	.047	.032	.019	.015	.010	.006	
6.0	.131	.080	.044	.113	.070	.038	.078	.049	.027	.045	.029	.016	.015	.009	.005	
7.0	.125	.073	.037	.107	.063	.032	.074	.044	.023	.043	.026	.014	.014	.009	.004	
8.0	.119	.067	.032	.103	.058	.028	.071	.041	.020	.041	.024	.012	.013	.008	.004	
9.0	.114	.062	.028	.098	.054	.024	.068	.038	.017	.040	.022	.010	.013	.007	.003	
10.0	.109	.058	.024	.094	.050	.021	.065	.035	.015	.038	.021	.009	.012	.007	.003	

C Range: 0 - 360DEG
 C Interval: 15.0DEG
 Test Speed: HIGH
 Temperature:25.3DEG
 Operators:Cao Chengpei
 Test Date:2014-09-02

γ Range: 0 - 90DEG
 γ Interval: 1.0DEG
 Test System:EVERFINE GO-2000B_V1 SYSTEM V2.0.288
 Humidity:53.0%
 Test Distance:5.780m [K=1.0000]
 Remarks:

UGR(Unified Glare Rating) Table

Test:U:220.3V I:0.1014A P:21.43W PF:0.9591 Lamp Flux:1969.22x1 lm		
NAME: C8R-20S-830	TYPE:Downlight	SERIAL No.:
SPEC.:3000K	DIM.: φ230mm*H76mm	
MFR.: E-LITE LIGHTING CO.,LTD.		

ceiling/cavity	0.7	0.7	0.5	0.5	0.3	0.7	0.7	0.5	0.5	0.3
walls	0.5	0.3	0.5	0.3	0.3	0.5	0.3	0.5	0.3	0.3
working plane	0.2	0.2	0.2	0.2	0.2	0.2	0.2	0.2	0.2	0.2
Room dimensions	Viewed crosswise					Viewed endwise				
x = 2H y = 2H	20.1	21.4	20.4	21.6	21.8	20.1	21.3	20.3	21.5	21.7
3H	20.2	21.4	20.5	21.6	21.8	20.2	21.3	20.5	21.6	21.8
4H	20.2	21.3	20.5	21.5	21.8	20.2	21.3	20.5	21.5	21.7
6H	20.1	21.1	20.4	21.4	21.7	20.1	21.1	20.4	21.4	21.6
8H	20.1	21.1	20.4	21.3	21.6	20.0	21.0	20.4	21.3	21.6
12H	20.0	21.0	20.4	21.3	21.6	20.0	20.9	20.3	21.2	21.5
4H 2H	20.2	21.3	20.5	21.5	21.7	20.1	21.2	20.4	21.4	21.7
3H	20.3	21.3	20.7	21.6	21.9	20.3	21.2	20.6	21.5	21.8
4H	20.3	21.2	20.7	21.5	21.8	20.3	21.2	20.7	21.5	21.8
6H	20.3	21.0	20.7	21.4	21.7	20.2	21.0	20.6	21.3	21.7
8H	20.2	20.9	20.6	21.3	21.7	20.2	20.9	20.6	21.2	21.6
12H	20.2	20.8	20.6	21.2	21.6	20.2	20.8	20.6	21.2	21.6
8H 4H	20.3	20.9	20.7	21.3	21.7	20.2	20.9	20.6	21.3	21.6
6H	20.2	20.8	20.6	21.1	21.6	20.1	20.7	20.6	21.1	21.5
8H	20.2	20.7	20.6	21.1	21.5	20.1	20.6	20.6	21.0	21.5
12H	20.1	20.6	20.6	21.0	21.5	20.1	20.5	20.6	21.0	21.4
12H 4H	20.2	20.8	20.6	21.2	21.6	20.2	20.8	20.6	21.2	21.6
6H	20.1	20.6	20.6	21.1	21.5	20.1	20.6	20.6	21.0	21.5
8H	20.1	20.5	20.6	21.0	21.5	20.1	20.5	20.5	20.9	21.4
Variations with the observer position at spacings:										
S = 1.0H	+ 1.1 / - 1.5					+ 1.1 / - 1.6				
1.5H	+ 0.6 / - 0.8					+ 0.6 / - 0.8				
2.0H	+ 2.4 / - 3.3					+ 2.4 / - 3.2				

CIE Pub.117 Corrected 1969 lm Total Lamp Luminous Flux.(8log(F/F0) = 2.4)

C Range: 0 - 360DEG
 C Interval: 15.0DEG
 Test Speed: HIGH
 Temperature:25.3DEG
 Operators:Cao Chengpei
 Test Date:2014-09-02

γ Range: 0 - 90DEG
 γ Interval: 1.0DEG
 Test System:EVERFINE GO-2000B_V1 SYSTEM V2.0.288
 Humidity:53.0%
 Test Distance:5.780m [K=1.0000]
 Remarks:

UTILIZATION FACTORS TABLE

Test:U:220.3V I:0.1014A P:21.43W PF:0.9591 Lamp Flux:1969.22x1 lm		
NAME: C8R-20S-830	TYPE:Downlight	SERIAL No.:
SPEC.:3000K	DIM.: φ230mm*H76mm	
MFR.: E-LITE LIGHTING CO.,LTD.		

REFLECTANCE										
Ceiling	0.8	0.8	0.8	0.7	0.7	0.7	0.5	0.5	0.5	0
Walls	0.7	0.5	0.3	0.7	0.5	0.3	0.7	0.5	0.3	0
Working plane	0.2	0.2	0.2	0.2	0.2	0.2	0.2	0.2	0.2	0
ROOM INDEX	UTILIZATION FACTORS(PERCENT) $k(RI) \times RCR = 5$									
k = 0.60	69	59	53	68	59	53	67	58	53	48
0.80	79	70	64	78	69	64	76	68	63	58
1.00	87	78	72	86	78	72	84	78	72	66
1.25	93	85	80	92	84	79	89	83	79	73
1.50	97	90	85	96	89	84	93	87	83	77
2.00	102	96	91	101	95	91	98	93	89	83
2.50	105	99	95	103	98	94	100	96	92	85
3.00	107	102	99	105	101	97	102	98	95	88
4.00	110	106	103	108	104	101	104	101	99	91
5.00	112	108	105	110	106	104	105	103	101	92
ROOM INDEX	UF(total)									Direct
According to DIN EN 13032-2 2004			Suspended				SHRNOM = 1.25			

C Range: 0 - 360DEG
 C Interval: 15.0DEG
 Test Speed: HIGH
 Temperature:25.3DEG
 Operators:Cao Chengpei
 Test Date:2014-09-02

γ Range: 0 - 90DEG
 γ Interval: 1.0DEG
 Test System:EVERFINE GO-2000B_V1 SYSTEM V2.0.288
 Humidity:53.0%
 Test Distance:5.780m [K=1.0000]
 Remarks:

ISOCANDELA DIAGRAM

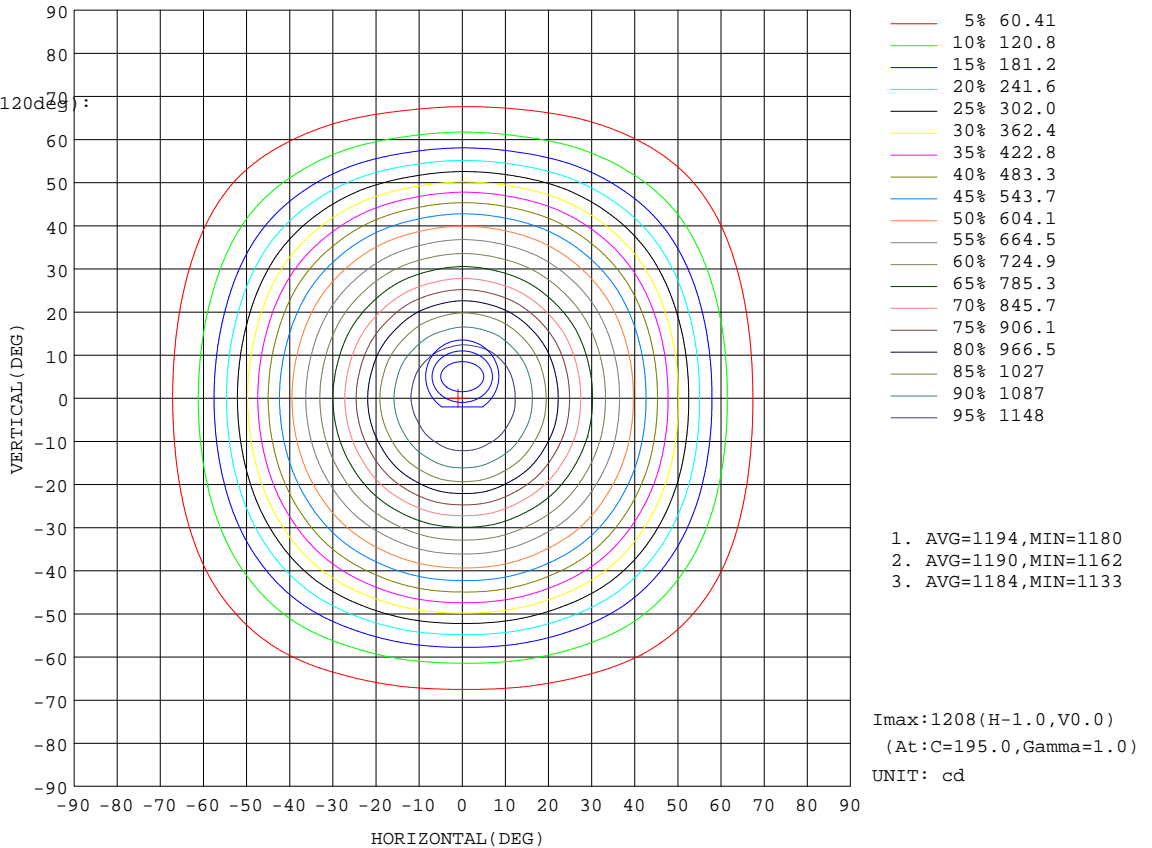
Test:U:220.3V I:0.1014A P:21.43W PF:0.9591 Lamp Flux:1969.22x1 lm		
NAME: C8R-20S-830	TYPE:Downlight	SERIAL No.:
SPEC.:3000K	DIM.: φ230mm*H76mm	
MFR.: E-LITE LIGHTING CO.,LTD.		

Conical surface Flux(90deg):

1470.2 lm
%lum = 74.7%
%lamp = 74.7%

Conical surface Flux(120deg):

1858.2 lm
%lum = 94.4%
%lamp = 94.4%



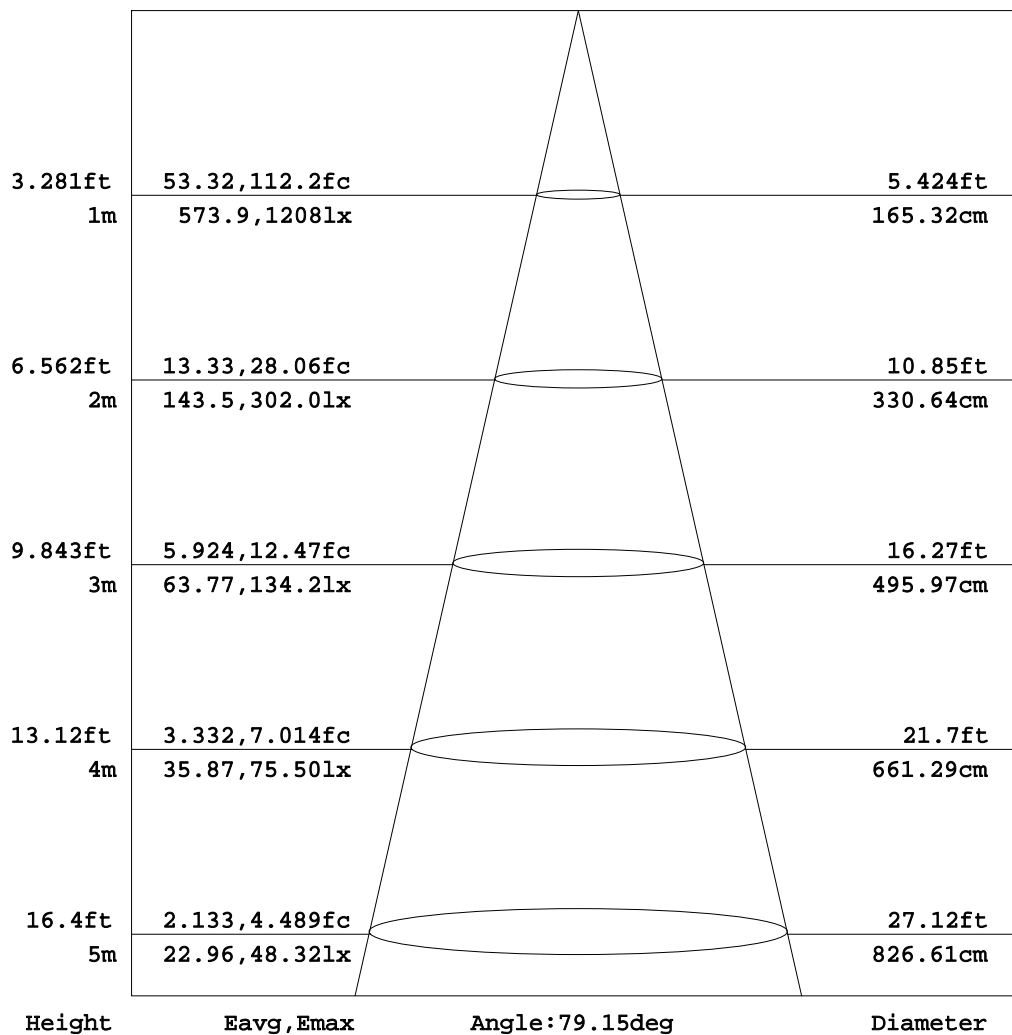
C Range: 0 - 360DEG
C Interval: 15.0DEG
Test Speed: HIGH
Temperature:25.3DEG
Operators:Cao Chengpei
Test Date:2014-09-02

γ Range: 0 - 90DEG
γ Interval: 1.0DEG
Test System:EVERFINE GO-2000B_V1 SYSTEM V2.0.288
Humidity:53.0%
Test Distance:5.780m [K=1.0000]
Remarks:

AAI Figure

Test:U:220.3V I:0.1014A P:21.43W PF:0.9591 Lamp Flux:1969.22x1 lm		
NAME: C8R-20S-830	TYPE:Downlight	SERIAL No.:
SPEC.:3000K	DIM.: φ230mm*H76mm	
MFR.: E-LITE LIGHTING CO.,LTD.		

Flux out:1269 lm



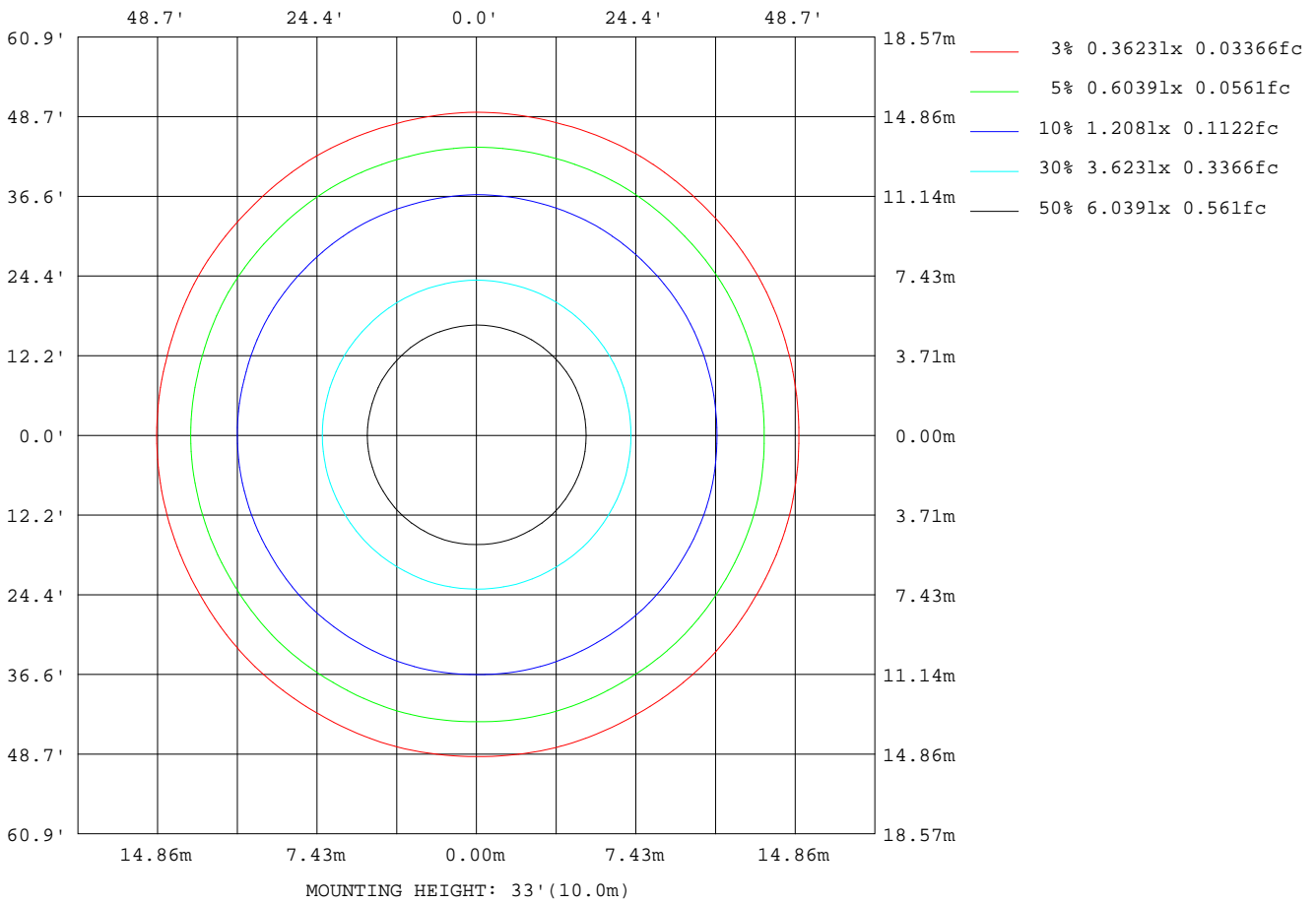
Note:The Curves indicate the illuminated area and the average illumination when the luminaire is at different distance.

C Range: 0 - 360DEG
C Interval: 15.0DEG
Test Speed: HIGH
Temperature:25.3DEG
Operators:Cao Chengpei
Test Date:2014-09-02

γ Range: 0 - 90DEG
γ Interval: 1.0DEG
Test System:EVERFINE GO-2000B_V1 SYSTEM V2.0.288
Humidity:53.0%
Test Distance:5.780m [K=1.0000]
Remarks:

ISOLUX DIAGRAM

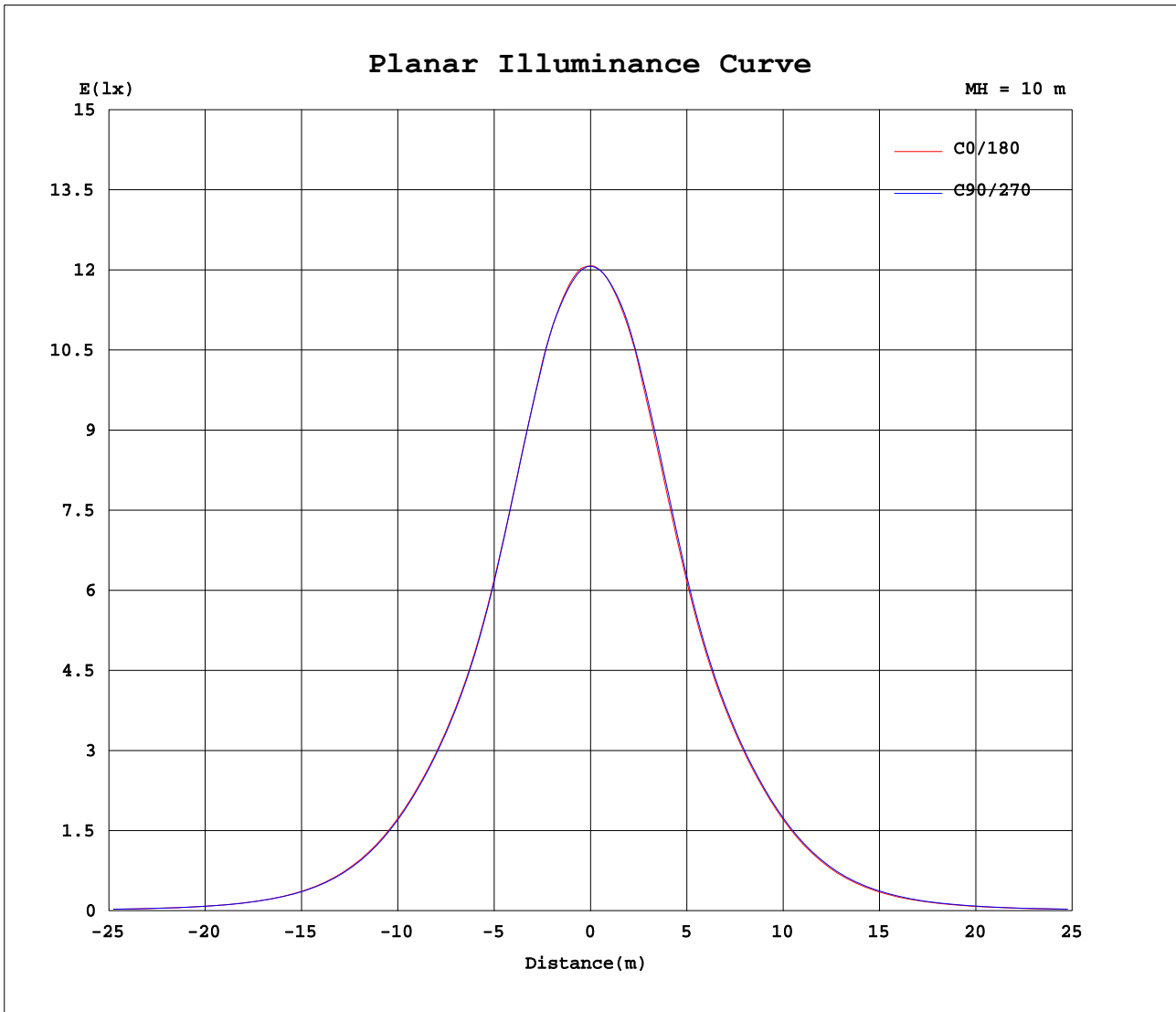
Test:U:220.3V I:0.1014A P:21.43W PF:0.9591 Lamp Flux:1969.22x1 lm		
NAME: C8R-20S-830	TYPE:Downlight	SERIAL No.:
SPEC.:3000K	DIM.: φ230mm*H76mm	
MFR.: E-LITE LIGHTING CO.,LTD.		



C Range: 0 - 360DEG
 C Interval: 15.0DEG
 Test Speed: HIGH
 Temperature:25.3DEG
 Operators:Cao Chengpei
 Test Date:2014-09-02

γ Range: 0 - 90DEG
 γ Interval: 1.0DEG
 Test System:EVERFINE GO-2000B_V1 SYSTEM V2.0.288
 Humidity:53.0%
 Test Distance:5.780m [K=1.0000]
 Remarks:

Planar Illuminance Curve



C Range: 0 - 360DEG
 C Interval: 15.0DEG
 Test Speed: HIGH
 Temperature: 25.3DEG
 Operators: Cao Chengpei
 Test Date: 2014-09-02

γ Range: 0 - 90DEG
 γ Interval: 1.0DEG
 Test System: EVERFINE GO-2000B_V1 SYSTEM V2.0.288
 Humidity: 53.0%
 Test Distance: 5.780m [K=1.0000]
 Remarks:

Photometric Data Table [cd]

G/C	0.0	15.0	30.0	45.0	60.0	75.0	90.0	105.0	120.0	135.0
0.0	1208	1208	1208	1208	1207	1207	1207	1207	1207	1208
3.0	1207	1207	1206	1205	1204	1203	1203	1203	1202	1203
6.0	1196	1196	1195	1194	1192	1192	1191	1191	1190	1192
9.0	1177	1177	1176	1176	1175	1175	1174	1174	1172	1173
12.0	1151	1152	1151	1151	1150	1151	1150	1150	1147	1146
15.0	1109	1110	1108	1109	1106	1108	1106	1107	1103	1102
18.0	1055	1057	1055	1057	1055	1056	1054	1054	1051	1050
21.0	993.9	995.7	993.4	995.2	992.9	994.4	991.3	992.4	988.9	988.7
24.0	926.2	927.7	925.0	926.9	924.6	926.4	923.1	924.0	921.0	920.8
27.0	856.6	858.3	854.7	855.9	853.0	854.8	851.4	853.1	850.2	850.6
30.0	789.2	790.6	787.6	788.2	785.5	787.0	783.9	785.3	782.6	783.2
33.0	728.5	729.7	726.8	727.3	724.4	725.5	722.7	723.9	721.4	722.4
36.0	672.7	674.2	671.1	672.0	668.4	669.7	666.8	668.1	665.4	666.6
39.0	617.3	618.5	615.6	616.6	613.2	614.2	611.3	612.0	609.1	610.1
42.0	556.8	558.3	555.5	556.7	552.9	553.7	550.1	550.7	547.2	548.2
45.0	489.3	491.7	488.5	490.1	485.2	486.1	481.8	483.0	478.6	479.7
48.0	415.7	418.7	415.5	416.5	411.2	412.0	408.3	409.5	405.1	405.2
51.0	339.7	342.8	339.7	340.0	334.9	336.0	332.7	334.1	329.9	329.6
54.0	265.7	268.8	265.6	266.2	261.9	263.5	260.2	261.6	257.3	257.4
57.0	199.2	201.2	199.0	200.2	197.4	199.1	196.1	196.9	192.7	192.7
60.0	143.3	144.8	143.3	145.4	143.5	145.0	142.6	142.7	138.7	139.1
63.0	99.98	101.5	100.7	102.7	101.5	102.8	100.4	100.7	97.60	97.56
66.0	70.02	71.68	71.02	72.46	71.40	72.60	71.02	71.54	69.20	68.97
69.0	50.73	51.75	51.48	52.25	51.68	52.31	51.46	51.76	50.48	50.11
72.0	35.68	36.37	36.02	36.58	36.07	36.60	35.80	36.07	35.11	34.88
75.0	21.06	21.73	21.19	21.59	20.88	21.38	20.64	20.97	20.09	20.02
78.0	6.742	7.195	6.649	7.001	6.294	6.610	6.038	6.311	5.745	5.912
81.0	5.008	4.966	4.960	4.991	5.056	5.088	5.098	5.120	5.110	5.205
84.0	4.935	4.893	4.889	4.920	4.983	5.014	5.018	5.039	5.039	5.124
87.0	4.850	4.805	4.804	4.828	4.892	4.915	4.927	4.938	4.942	5.010
90.0	0.2662	0.1892	0.1601	0.1373	0.1352	0.1289	0.1331	0.1289	0.1310	0.1289
G/C	150.0	165.0	180.0	195.0	210.0	225.0	240.0	255.0	270.0	285.0
0.0	1208	1208	1208	1208	1208	1208	1207	1207	1207	1207
3.0	1203	1203	1204	1203	1204	1203	1203	1203	1204	1204
6.0	1191	1191	1192	1192	1193	1192	1193	1192	1194	1194
9.0	1171	1172	1173	1173	1174	1174	1175	1176	1178	1179
12.0	1144	1145	1147	1147	1149	1149	1150	1150	1153	1153
15.0	1099	1100	1101	1100	1104	1103	1106	1106	1111	1112
18.0	1046	1047	1048	1047	1051	1051	1056	1057	1062	1062
21.0	984.7	986.0	987.2	985.4	989.4	989.5	996.0	996.7	1002	1001
24.0	917.2	918.5	920.1	918.3	922.5	923.2	929.7	930.5	935.0	933.5
27.0	847.3	849.6	850.9	849.3	853.7	853.7	859.4	859.5	863.8	862.2
30.0	781.2	783.3	785.1	783.7	787.9	787.7	792.8	792.4	796.6	794.8
33.0	720.8	723.3	725.2	724.2	727.9	727.8	732.0	731.6	735.4	734.0
36.0	665.1	668.1	669.9	668.4	672.1	671.6	675.7	675.2	679.2	677.6
39.0	609.0	611.9	613.6	612.2	615.5	615.1	618.9	618.6	622.4	621.5
42.0	546.9	549.9	552.1	550.2	553.8	552.8	556.8	556.1	560.6	559.7
45.0	477.1	480.6	483.3	481.0	485.2	483.1	487.5	486.5	491.8	490.9
48.0	401.7	404.6	407.9	406.4	410.2	408.3	412.3	411.8	417.2	417.0
51.0	325.4	327.5	330.7	329.1	333.4	331.6	335.9	335.3	340.9	340.4
54.0	253.1	254.7	257.0	255.1	259.6	258.6	263.4	262.9	267.9	267.0
57.0	189.4	190.5	191.8	189.7	193.7	193.7	198.3	198.2	201.9	200.7
60.0	136.3	137.3	138.2	136.0	139.4	139.1	143.5	143.2	146.5	145.0
63.0	95.04	96.11	97.16	95.98	98.07	97.56	100.6	100.6	103.3	102.3
66.0	66.91	67.71	68.53	67.91	69.45	68.59	70.31	70.13	72.35	72.04
69.0	48.83	49.09	49.41	49.19	50.14	49.71	50.61	50.52	51.86	51.82
72.0	33.91	34.26	34.55	34.31	35.06	34.78	35.53	35.43	36.39	36.30
75.0	19.28	19.74	20.04	19.75	20.48	20.20	20.89	20.70	21.58	21.43
78.0	5.643	5.901	6.055	5.765	6.095	5.894	6.386	6.273	6.838	6.538
81.0	5.150	5.093	5.109	5.141	5.165	5.204	5.213	5.262	5.338	5.341
84.0	5.074	5.022	5.034	5.068	5.103	5.137	5.136	5.182	5.255	5.268
87.0	4.967	4.917	4.927	4.954	4.982	5.044	5.046	5.112	5.192	5.205
90.0	0.1310	0.1289	0.0894	0.0936	0.0915	0.1123	0.1331	0.2392	0.3702	0.5656
G/C	300.0	315.0	330.0	345.0						
0.0	1207	1208	1208	1208						
3.0	1204	1205	1206	1207						
6.0	1195	1195	1196	1196						
9.0	1180	1179	1179	1177						
12.0	1156	1155	1154	1152						
15.0	1114	1112	1113	1110						
18.0	1064	1061	1061	1057						
21.0	1003	999.8	999.8	995.1						

C Range: 0 - 360DEG

C Interval: 15.0DEG

Test Speed: HIGH

Temperature: 25.3DEG

Operators: Cao Chengpei

Test Date: 2014-09-02

γ Range: 0 - 90DEG

γ Interval: 1.0DEG

Test System: EVERFINE GO-2000B_V1 SYSTEM V2.0.288

Humidity: 53.0%

Test Distance: 5.780m [K=1.0000]

Remarks:

Photometric Data Table [cd]

24.0	935.6	932.1	932.3	927.7
27.0	864.3	861.3	862.0	858.0
30.0	797.0	793.8	794.7	790.6
33.0	735.8	733.2	733.7	730.0
36.0	679.8	677.4	678.1	674.3
39.0	623.6	621.8	622.5	619.2
42.0	562.8	560.8	562.3	558.7
45.0	494.9	492.6	494.9	491.3
48.0	420.8	418.7	420.8	417.7
51.0	344.3	341.5	343.8	340.9
54.0	270.2	267.2	269.5	267.2
57.0	203.3	200.8	203.0	201.0
60.0	147.4	145.0	147.4	145.2
63.0	104.0	102.3	103.7	101.8
66.0	73.40	71.74	72.26	70.70
69.0	52.58	51.52	51.64	50.85
72.0	36.84	36.20	36.36	35.84
75.0	22.02	21.52	21.80	21.32
78.0	7.094	6.956	7.510	7.192
81.0	5.313	5.160	5.134	5.091
84.0	5.232	5.085	5.047	5.012
87.0	5.169	5.016	4.969	4.925
90.0	0.6717	0.7674	0.7611	0.7549

C Range: 0 - 360DEG
 C Interval: 15.0DEG
 Test Speed: HIGH
 Temperature: 25.3DEG
 Operators: Cao Chengpei
 Test Date: 2014-09-02

γ Range: 0 - 90DEG
 γ Interval: 1.0DEG
 Test System: EVERFINE GO-2000B_V1 SYSTEM V2.0.288
 Humidity: 53.0%
 Test Distance: 5.780m [K=1.0000]
 Remarks: