

LED Downlight CATO Series C6F-20S-830



Light Output Ratio:	100.0%	
Luminaire Power:	21.38 W	
SHR Nominal:	1.00	Calculated using the TM5
SHR Maximum:	1.15	fine grid method.

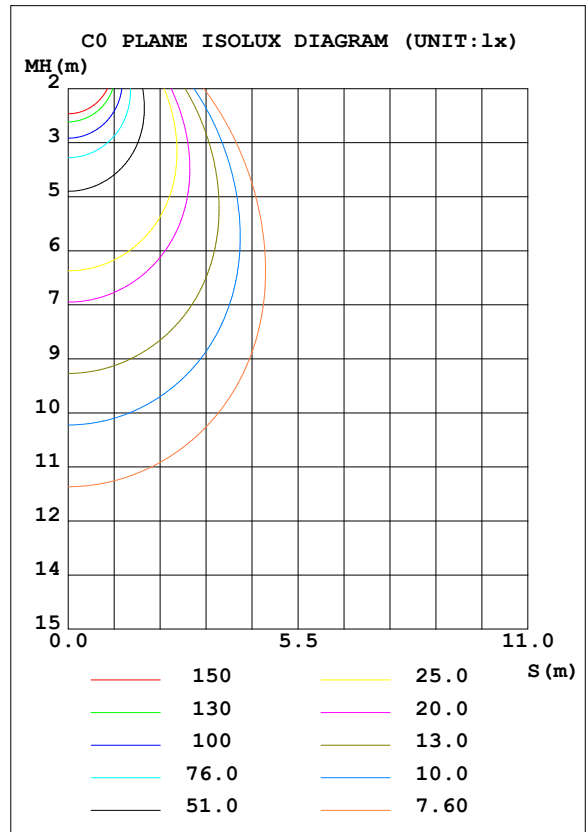
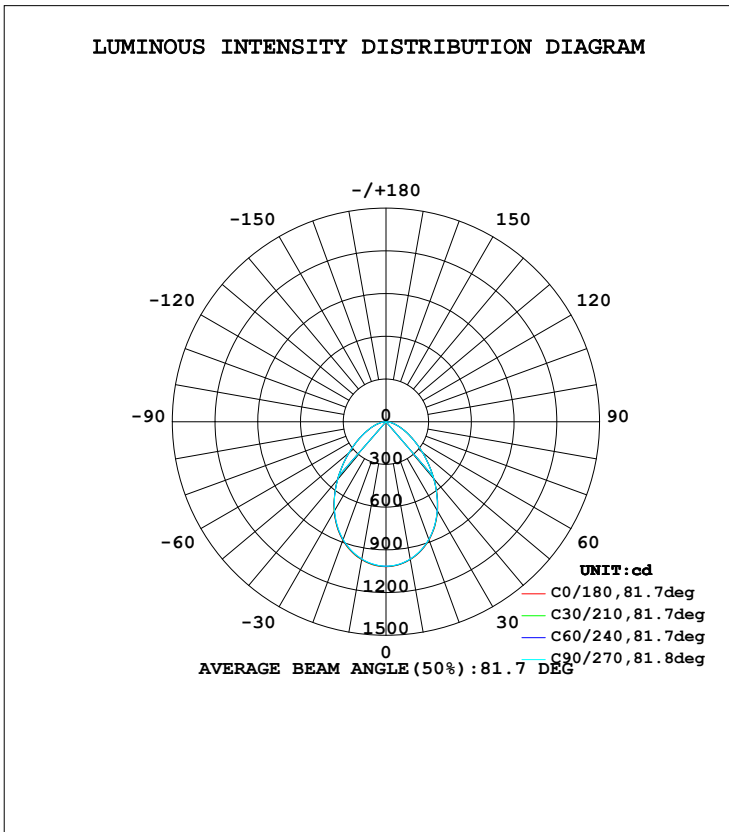
C Range: 0 - 360DEG  
 C Interval: 15.0DEG  
 Test Speed: HIGH  
 Temperature: 25.3DEG  
 Operators: Cao Chengpei  
 Test Date: 2014-08-30

$\gamma$  Range: 0 - 90DEG  
 $\gamma$  Interval: 1.0DEG  
 Test System: EVERFINE GO-2000B\_V1 SYSTEM V2.0.288  
 Humidity: 53.0%  
 Test Distance: 5.780m [K=1.0000]  
 Remarks:

LUMINAIRE PHOTOMETRIC TEST REPORT

Test:U:220.3V I:0.1012A P:21.38W PF:0.9589 Lamp Flux:1903.79x1 lm		
NAME: C6F-20S-830	TYPE:Downlight	SERIAL No.:
SPEC.:3000K	DIM.: φ169mm*H66mm	
MFR.: E-LITE LIGHTING CO.,LTD.		

DATA OF LAMP		PHOTOMETRIC DATA Eff: 89.03 lm/W			
MODEL	SAMSUNG-3000K	I <sub>max</sub> (cd)	1018	S/MH (C0/180)	1.09
NOMINAL POWER (W)	22	LOR (%)	100.0	S/MH (C90/270)	1.09
RATED VOLTAGE (V)	220	TOTAL FLUX (lm)	1903.8	η UP, DN (C0-180)	0.0, 49.8
NOMINAL FLUX (lm)	1903.79	CIE CLASS	DIRECT	η UP, DN (C180-360)	0.0, 50.2
LAMPS INSIDE	1	η up (%)	0.0	CIBSE SHR NOM	1.00
TEST VOLTAGE (V)	220	η down (%)	100.0	CIBSE SHR MAX	1.15



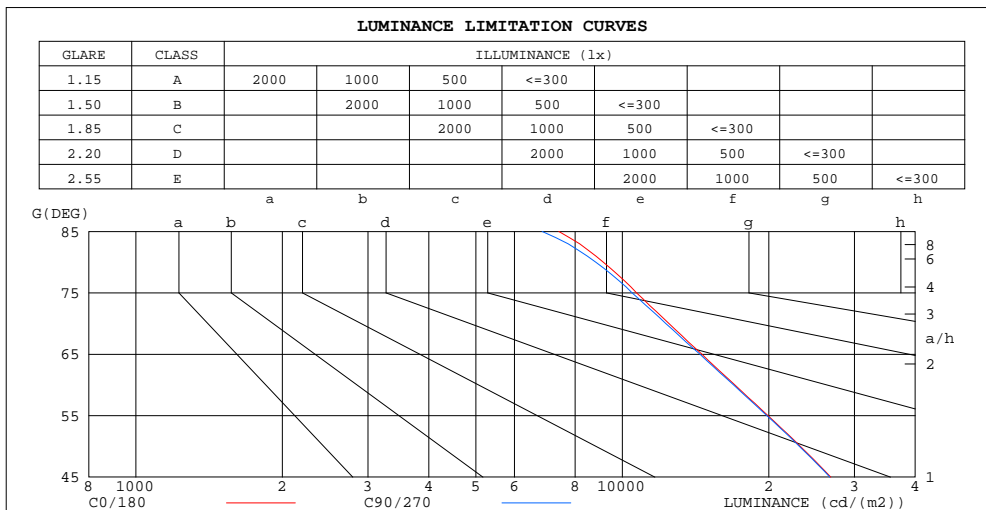
C Range: 0 - 360DEG  
 C Interval: 15.0DEG  
 Test Speed: HIGH  
 Temperature: 25.3DEG  
 Operators: Cao Chengpei  
 Test Date: 2014-08-30

γ Range: 0 - 90DEG  
 γ Interval: 1.0DEG  
 Test System: EVERFINE GO-2000B\_V1 SYSTEM V2.0.288  
 Humidity: 53.0%  
 Test Distance: 5.780m [K=1.0000]  
 Remarks:

**ZONAL FLUX DIAGRAM  
AND LUMINANCE LIMITATION CURVES**

**ZONAL FLUX DIAGRAM:**

$\gamma$	C0	C45	C90	C135	C180	C225	C270	C315	$\gamma$	$\Phi$ zone	$\Phi$ total	$\#lum, lamp$
10	983.1	981.5	978.9	978.8	984.6	980.1	978.6	977.6	0- 10	95.18	95.18	5,5
20	883.9	882.2	879.4	880.4	886.6	881.8	879.7	878.8	10- 20	263.7	358.9	18.9,18.9
30	724.0	722.6	719.8	721.8	727.9	723.7	723.0	720.6	20- 30	371.0	729.9	38.3,38.3
40	524.4	523.9	521.5	523.3	529.0	526.6	527.7	524.7	30- 40	390.2	1120	58.8,58.8
50	334.8	334.7	333.3	334.4	339.0	337.6	340.4	337.4	40- 50	329.3	1449	76.1,76.1
60	191.0	190.9	189.8	190.7	193.6	192.8	195.8	193.2	50- 60	231.9	1681	88.3,88.3
70	95.65	95.59	94.27	95.20	96.84	96.26	98.40	97.17	60- 70	139.0	1820	95.6,95.6
80	35.58	35.23	34.34	34.72	35.58	35.46	36.56	36.45	70- 80	66.94	1887	99.1,99.1
90	0.3119	0.2204	0.2225	0.2184	0.1851	0.2059	0.3868	0.5885	80- 90	16.76	1904	100,100
100									90-100			
110									100-110			
120									110-120			
130									120-130			
140									130-140			
150									140-150			
160									150-160			
170									160-170			
180									170-180			
DEG	LUMINOUS INTENSITY:cd									UNIT:lm		



LUMINANCE cd/(m2)		
G(DEG)	C0/180	C90/270
85	7402	6841
80	9140	8821
75	10697	10471
70	12474	12294
65	14573	14439
60	17041	16930
55	19928	19826
50	23229	23128
45	26820	26695

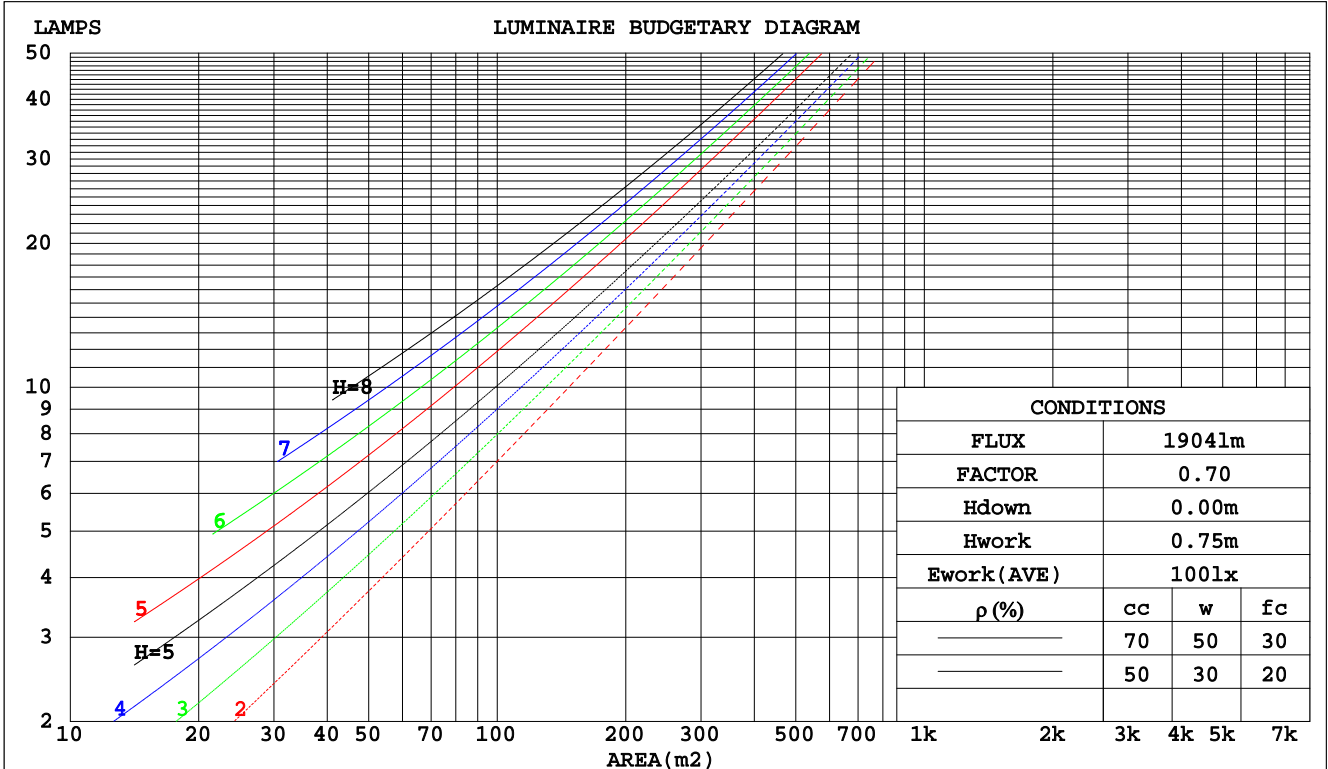
C Range: 0 - 360DEG  
 C Interval: 15.0DEG  
 Test Speed: HIGH  
 Temperature: 25.3DEG  
 Operators: Cao Chengpei  
 Test Date: 2014-08-30

$\gamma$  Range: 0 - 90DEG  
 $\gamma$  Interval: 1.0DEG  
 Test System: EVERFINE GO-2000B\_V1 SYSTEM V2.0.288  
 Humidity: 53.0%  
 Test Distance: 5.780m [K=1.0000]  
 Remarks:

CU AND LUMINAIRE BUDGETARY ESTIMATE DIAGRAM

Test:U:220.3V I:0.1012A P:21.38W PF:0.9589 Lamp Flux:1903.79x1 lm		
NAME: C6F-20S-830	TYPE:Downlight	SERIAL No.:
SPEC.:3000K	DIM.: φ169mm*H66mm	
MFR.: E-LITE LIGHTING CO.,LTD.		

pcc	80%			70%			50%			30%			10%			0
pw	50%	30%	10%	50%	30%	10%	50%	30%	10%	50%	30%	10%	50%	30%	10%	0
pfc	20%			20%			20%			20%			20%			0
RCR	RCR:Room Cavity Ratio															
	Coefficients of Utilization(CU)															
0.0	1.19	1.19	1.19	1.16	1.16	1.16	1.11	1.11	1.11	1.06	1.06	1.06	1.02	1.02	1.02	.00
1.0	1.07	1.03	.00	1.04	1.01	.98	1.00	.97	.95	.96	.94	.92	.93	.91	.89	.87
2.0	.95	.89	.84	.93	.88	.83	.90	.85	.81	.87	.83	.80	.84	.81	.78	.76
3.0	.85	.78	.72	.84	.77	.72	.81	.75	.71	.78	.73	.69	.76	.72	.68	.66
4.0	.77	.69	.63	.75	.68	.63	.73	.67	.62	.71	.65	.61	.69	.64	.60	.58
5.0	.70	.62	.56	.68	.61	.55	.66	.60	.55	.65	.59	.54	.63	.58	.54	.52
6.0	.63	.55	.50	.62	.55	.49	.61	.54	.49	.59	.53	.49	.58	.52	.48	.46
7.0	.58	.50	.44	.57	.50	.44	.56	.49	.44	.54	.48	.44	.53	.48	.43	.42
8.0	.53	.46	.40	.53	.45	.40	.52	.45	.40	.50	.44	.40	.49	.44	.40	.38
9.0	.49	.42	.37	.49	.42	.37	.48	.41	.36	.47	.41	.36	.46	.40	.36	.34
10.0	.46	.39	.34	.45	.38	.34	.44	.38	.33	.44	.38	.33	.43	.37	.33	.32



C Range: 0 - 360DEG  
 C Interval: 15.0DEG  
 Test Speed: HIGH  
 Temperature:25.3DEG  
 Operators:Cao Chengpei  
 Test Date:2014-08-30

γ Range: 0 - 90DEG  
 γ Interval: 1.0DEG  
 Test System:EVERFINE GO-2000B\_V1 SYSTEM V2.0.288  
 Humidity:53.0%  
 Test Distance:5.780m [K=1.0000]  
 Remarks:

WEC AND CCEC

Test:U:220.3V I:0.1012A P:21.38W PF:0.9589 Lamp Flux:1903.79x1 lm		
NAME: C6F-20S-830	TYPE:Downlight	SERIAL No.:
SPEC.:3000K	DIM.: φ169mm*H66mm	
MFR.: E-LITE LIGHTING CO.,LTD.		

ρcc	80%			70%			50%			30%			10%			0
ρw	50%	30%	10%	50%	30%	10%	50%	30%	10%	50%	30%	10%	50%	30%	10%	0
ρfc	20%			20%			20%			20%			20%			0
RCR	RCR:Room Cavity Ratio						Wall Exitance Coefficients(WEC)									
0.0																
1.0	.259	.147	.047	.252	.143	.046	.239	.137	.044	.227	.131	.042	.216	.125	.040	
2.0	.248	.136	.042	.242	.133	.041	.230	.128	.040	.220	.123	.039	.210	.119	.037	
3.0	.233	.124	.037	.228	.122	.037	.218	.118	.036	.209	.114	.035	.200	.111	.034	
4.0	.218	.113	.033	.213	.112	.033	.205	.109	.032	.197	.106	.032	.189	.103	.031	
5.0	.204	.104	.030	.200	.103	.030	.192	.100	.029	.185	.098	.029	.178	.095	.029	
6.0	.191	.096	.027	.188	.095	.027	.181	.093	.027	.175	.091	.027	.168	.089	.026	
7.0	.180	.089	.025	.177	.088	.025	.170	.086	.025	.165	.084	.025	.159	.083	.024	
8.0	.169	.083	.023	.166	.082	.023	.161	.080	.023	.156	.079	.023	.151	.077	.023	
9.0	.160	.077	.022	.157	.077	.022	.152	.075	.021	.148	.074	.021	.143	.073	.021	
10.0	.151	.073	.020	.149	.072	.020	.144	.071	.020	.140	.070	.020	.136	.069	.020	

ρcc	80%			70%			50%			30%			10%			0
ρw	50%	30%	10%	50%	30%	10%	50%	30%	10%	50%	30%	10%	50%	30%	10%	0
ρfc	20%			20%			20%			20%			20%			0
RCR	RCR:Room Cavity Ratio						Ceiling Cavity Exitance Coefficients(CCEC)									
0.0	.190	.190	.190	.163	.163	.163	.111	.111	.111	.064	.064	.064	.020	.020	.020	
1.0	.177	.157	.138	.151	.134	.119	.103	.092	.082	.060	.054	.048	.019	.017	.015	
2.0	.166	.132	.103	.142	.114	.089	.098	.079	.062	.056	.046	.037	.018	.015	.012	
3.0	.157	.114	.080	.135	.098	.069	.093	.068	.048	.053	.040	.029	.017	.013	.009	
4.0	.149	.100	.063	.128	.087	.055	.088	.060	.039	.051	.035	.023	.016	.012	.007	
5.0	.142	.090	.051	.122	.077	.044	.084	.054	.031	.049	.032	.019	.016	.010	.006	
6.0	.135	.081	.042	.116	.070	.037	.080	.049	.026	.046	.029	.016	.015	.009	.005	
7.0	.128	.074	.036	.110	.064	.031	.076	.045	.022	.044	.026	.013	.014	.009	.004	
8.0	.122	.068	.031	.105	.059	.027	.073	.041	.019	.042	.024	.011	.014	.008	.004	
9.0	.117	.063	.027	.100	.055	.023	.070	.038	.017	.041	.023	.010	.013	.007	.003	
10.0	.111	.059	.024	.096	.051	.021	.067	.036	.015	.039	.021	.009	.013	.007	.003	

C Range: 0 - 360DEG  
 C Interval: 15.0DEG  
 Test Speed: HIGH  
 Temperature:25.3DEG  
 Operators:Cao Chengpei  
 Test Date:2014-08-30

γ Range: 0 - 90DEG  
 γ Interval: 1.0DEG  
 Test System:EVERFINE GO-2000B\_V1 SYSTEM V2.0.288  
 Humidity:53.0%  
 Test Distance:5.780m [K=1.0000]  
 Remarks:

UGR(Unified Glare Rating) Table

Test:U:220.3V I:0.1012A P:21.38W PF:0.9589 Lamp Flux:1903.79x1 lm		
NAME: C6F-20S-830	TYPE:Downlight	SERIAL No.:
SPEC.:3000K	DIM.: φ169mm*H66mm	
MFR.: E-LITE LIGHTING CO.,LTD.		

ceiling/cavity	0.7	0.7	0.5	0.5	0.3	0.7	0.7	0.5	0.5	0.3
walls	0.5	0.3	0.5	0.3	0.3	0.5	0.3	0.5	0.3	0.3
working plane	0.2	0.2	0.2	0.2	0.2	0.2	0.2	0.2	0.2	0.2
Room dimensions	Viewed crosswise					Viewed endwise				
x = 2H y = 2H	22.5	23.9	22.8	24.1	24.3	22.5	23.9	22.8	24.1	24.3
3H	23.3	24.6	23.6	24.8	25.0	23.3	24.5	23.6	24.7	25.0
4H	23.6	24.8	23.9	25.0	25.3	23.6	24.7	23.9	25.0	25.2
6H	23.8	24.9	24.1	25.1	25.4	23.7	24.8	24.1	25.1	25.4
8H	23.8	24.9	24.2	25.2	25.4	23.8	24.8	24.1	25.1	25.4
12H	23.8	24.9	24.2	25.1	25.4	23.8	24.8	24.1	25.1	25.4
4H 2H	22.9	24.0	23.2	24.3	24.5	22.8	24.0	23.1	24.3	24.5
3H	23.8	24.8	24.1	25.1	25.4	23.8	24.8	24.1	25.1	25.4
4H	24.2	25.1	24.5	25.4	25.7	24.2	25.1	24.5	25.4	25.7
6H	24.5	25.3	24.9	25.6	26.0	24.4	25.2	24.8	25.6	25.9
8H	24.6	25.3	25.0	25.7	26.1	24.5	25.3	24.9	25.6	26.0
12H	24.6	25.3	25.0	25.7	26.1	24.5	25.2	25.0	25.6	26.0
8H 4H	24.3	25.0	24.7	25.4	25.8	24.3	25.0	24.7	25.4	25.8
6H	24.7	25.3	25.1	25.7	26.1	24.6	25.3	25.1	25.7	26.1
8H	24.8	25.4	25.3	25.8	26.2	24.8	25.3	25.2	25.7	26.2
12H	24.9	25.4	25.4	25.8	26.3	24.9	25.3	25.3	25.8	26.3
12H 4H	24.3	25.0	24.7	25.4	25.8	24.2	24.9	24.7	25.3	25.7
6H	24.7	25.2	25.2	25.7	26.1	24.7	25.2	25.1	25.6	26.1
8H	24.9	25.3	25.3	25.8	26.3	24.8	25.3	25.3	25.7	26.2
Variations with the observer position at spacings:										
S = 1.0H	+ 0.4 / - 0.5					+ 0.4 / - 0.5				
1.5H	+ 0.2 / - 0.2					+ 0.2 / - 0.3				
2.0H	+ 0.8 / - 0.7					+ 0.8 / - 0.7				

CIE Pub.117 Corrected 1904 lm Total Lamp Luminous Flux.(8log(F/F0) = 2.2)

C Range: 0 - 360DEG  
 C Interval: 15.0DEG  
 Test Speed: HIGH  
 Temperature:25.3DEG  
 Operators:Cao Chengpei  
 Test Date:2014-08-30

γ Range: 0 - 90DEG  
 γ Interval: 1.0DEG  
 Test System:EVERFINE GO-2000B\_V1 SYSTEM V2.0.288  
 Humidity:53.0%  
 Test Distance:5.780m [K=1.0000]  
 Remarks:

UTILIZATION FACTORS TABLE

Test:U:220.3V I:0.1012A P:21.38W PF:0.9589 Lamp Flux:1903.79x1 lm		
NAME: C6F-20S-830	TYPE:Downlight	SERIAL No.:
SPEC.:3000K	DIM.: φ169mm*H66mm	
MFR.: E-LITE LIGHTING CO.,LTD.		

REFLECTANCE										
Ceiling	0.8	0.8	0.8	0.7	0.7	0.7	0.5	0.5	0.5	0
Walls	0.7	0.5	0.3	0.7	0.5	0.3	0.7	0.5	0.3	0
Working plane	0.2	0.2	0.2	0.2	0.2	0.2	0.2	0.2	0.2	0
ROOM INDEX	UTILIZATION FACTORS(PERCENT) $k(RI) \times RCR = 5$									
k = 0.60	66	56	50	65	55	49	64	55	49	44
0.80	76	66	59	75	65	59	73	65	59	53
1.00	83	74	68	82	73	68	80	74	67	61
1.25	90	81	75	88	80	75	86	79	74	68
1.50	94	86	80	93	85	80	90	84	79	72
2.00	100	93	88	98	92	87	95	90	85	78
2.50	103	97	92	101	95	91	97	93	89	81
3.00	106	100	96	104	99	94	100	96	92	85
4.00	109	104	100	107	103	99	103	99	96	88
5.00	111	107	104	109	105	102	104	101	99	90
ROOM INDEX	UF(total)									Direct
According to DIN EN 13032-2 2004			Suspended				SHRNOM = 1.25			

C Range: 0 - 360DEG  
 C Interval: 15.0DEG  
 Test Speed: HIGH  
 Temperature:25.3DEG  
 Operators:Cao Chengpei  
 Test Date:2014-08-30

$\gamma$  Range: 0 - 90DEG  
 $\gamma$  Interval: 1.0DEG  
 Test System:EVERFINE GO-2000B\_V1 SYSTEM V2.0.288  
 Humidity:53.0%  
 Test Distance:5.780m [K=1.0000]  
 Remarks:

ISOCANDELA DIAGRAM

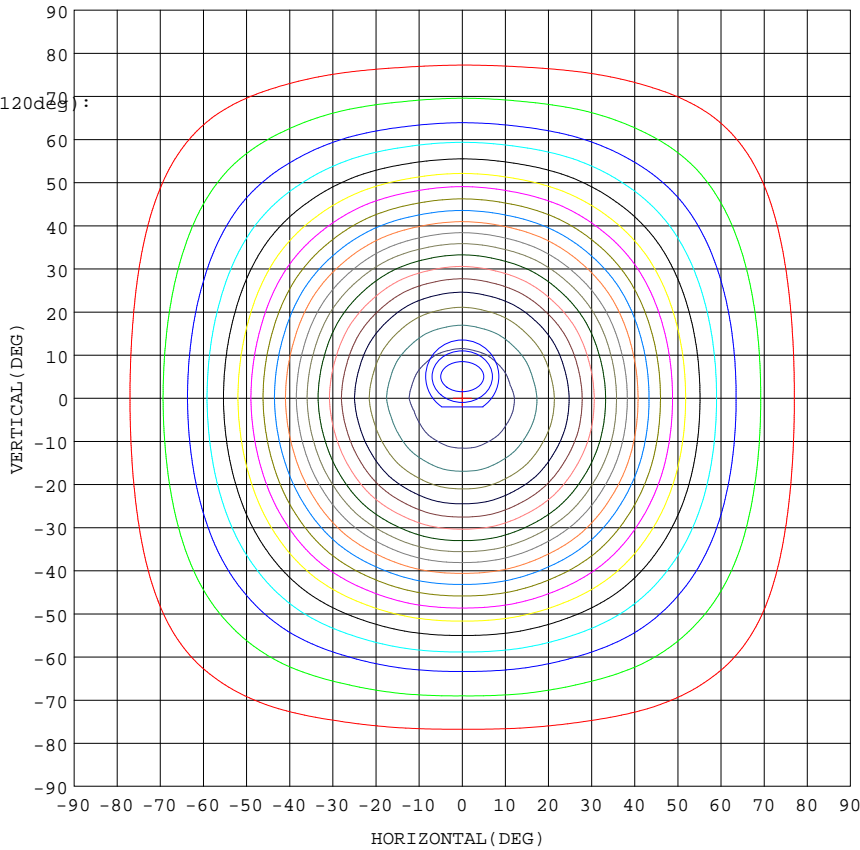
Test:U:220.3V I:0.1012A P:21.38W PF:0.9589 Lamp Flux:1903.79x1 lm		
NAME: C6F-20S-830	TYPE:Downlight	SERIAL No.:
SPEC.:3000K	DIM.: φ169mm*H66mm	
MFR.: E-LITE LIGHTING CO.,LTD.		

Conical surface Flux(90deg):

1295.7 lm  
%lum = 68.1%  
%lamp = 68.1%

Conical surface Flux(120deg):

1681.2 lm  
%lum = 88.3%  
%lamp = 88.3%



1. AVG=1001,MIN=987.8
2. AVG=997.8,MIN=971.3
3. AVG=992.3,MIN=950.7

Imax:1018(H0.0,V0.0)  
(At:C=0.0,Gamma=0.0)  
UNIT: cd

C Range: 0 - 360DEG  
C Interval: 15.0DEG  
Test Speed: HIGH  
Temperature:25.3DEG  
Operators:Cao Chengpei  
Test Date:2014-08-30

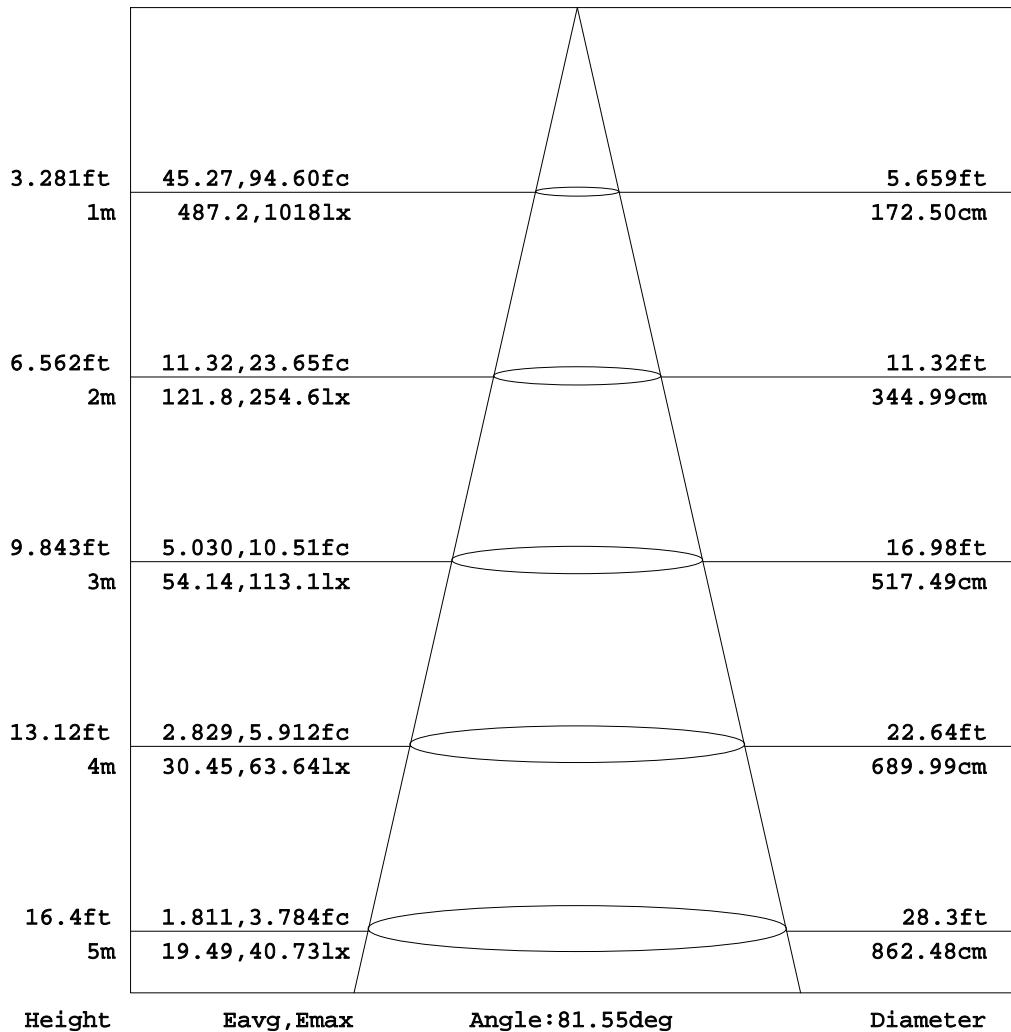
γ Range: 0 - 90DEG  
γ Interval: 1.0DEG  
Test System:EVERFINE GO-2000B\_V1 SYSTEM V2.0.288  
Humidity:53.0%  
Test Distance:5.780m [K=1.0000]  
Remarks:



**AAI Figure**

Test:U:220.3V I:0.1012A P:21.38W PF:0.9589 Lamp Flux:1903.79x1 lm		
NAME: C6F-20S-830	TYPE:Downlight	SERIAL No.:
SPEC.:3000K	DIM.: φ169mm*H66mm	
MFR.: E-LITE LIGHTING CO.,LTD.		

Flux out:1157 lm



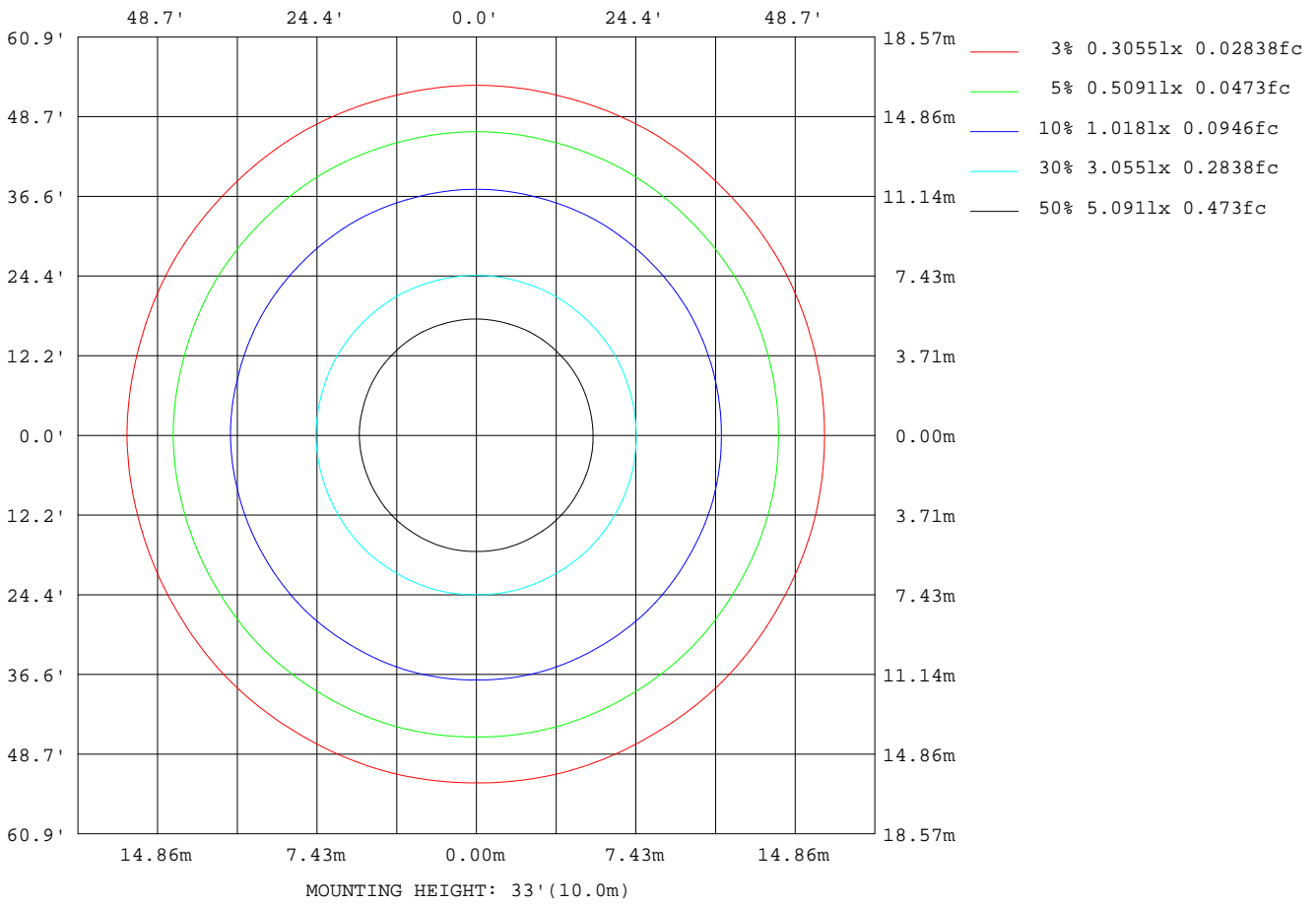
Note:The Curves indicate the illuminated area and the average illumination when the luminaire is at different distance.

C Range: 0 - 360DEG  
C Interval: 15.0DEG  
Test Speed: HIGH  
Temperature:25.3DEG  
Operators:Cao Chengpei  
Test Date:2014-08-30

γ Range: 0 - 90DEG  
γ Interval: 1.0DEG  
Test System:EVERFINE GO-2000B\_V1 SYSTEM V2.0.288  
Humidity:53.0%  
Test Distance:5.780m [K=1.0000]  
Remarks:

ISOLUX DIAGRAM

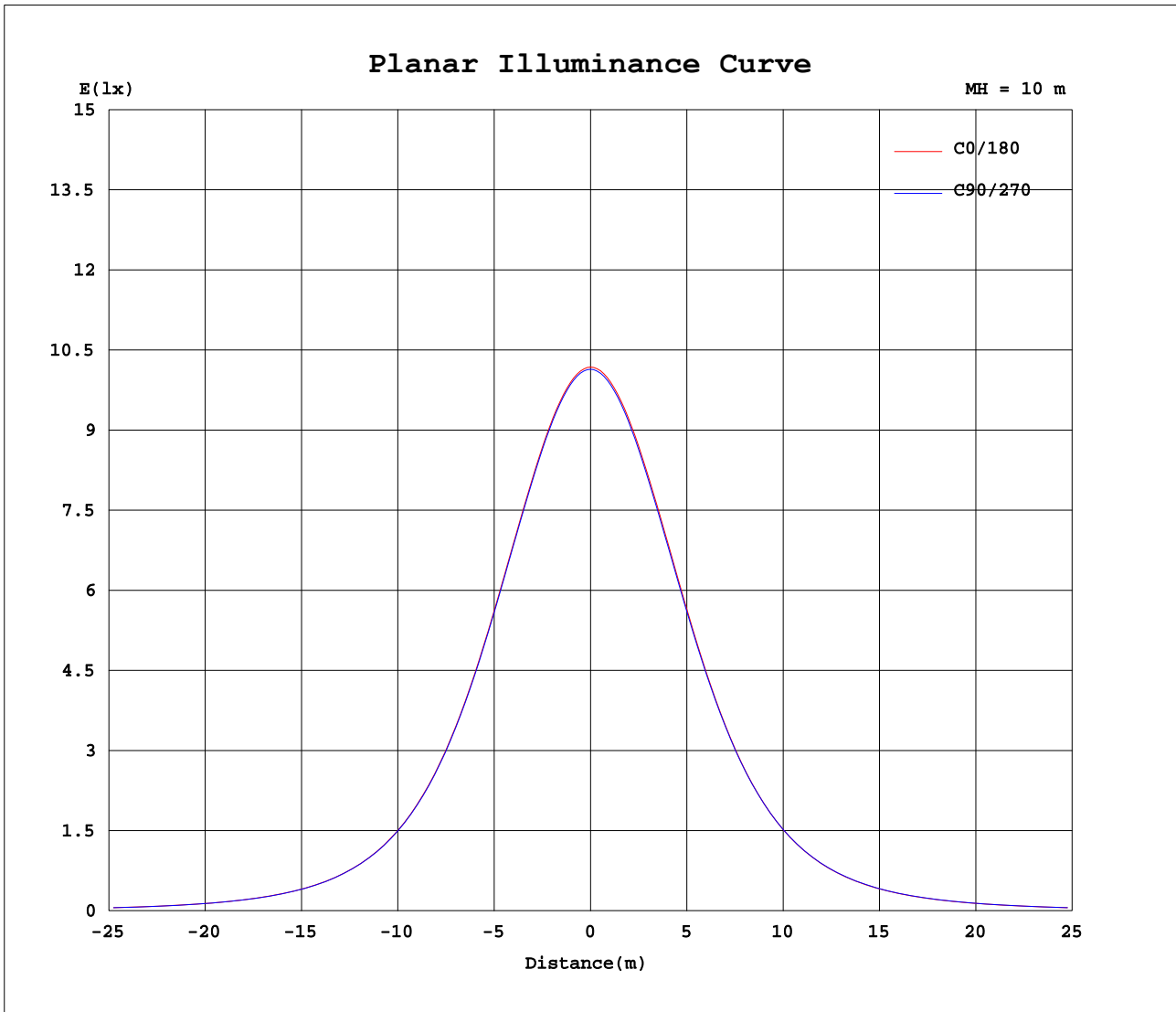
Test:U:220.3V I:0.1012A P:21.38W PF:0.9589 Lamp Flux:1903.79x1 lm		
NAME: C6F-20S-830	TYPE:Downlight	SERIAL No.:
SPEC.:3000K	DIM.: φ169mm*H66mm	
MFR.: E-LITE LIGHTING CO.,LTD.		



C Range: 0 - 360DEG  
 C Interval: 15.0DEG  
 Test Speed: HIGH  
 Temperature:25.3DEG  
 Operators:Cao Chengpei  
 Test Date:2014-08-30

γ Range: 0 - 90DEG  
 γ Interval: 1.0DEG  
 Test System:EVERFINE GO-2000B\_V1 SYSTEM V2.0.288  
 Humidity:53.0%  
 Test Distance:5.780m [K=1.0000]  
 Remarks:

Planar Illuminance Curve



C Range: 0 - 360DEG  
 C Interval: 15.0DEG  
 Test Speed: HIGH  
 Temperature: 25.3DEG  
 Operators: Cao Chengpei  
 Test Date: 2014-08-30

$\gamma$  Range: 0 - 90DEG  
 $\gamma$  Interval: 1.0DEG  
 Test System: EVERFINE GO-2000B\_V1 SYSTEM V2.0.288  
 Humidity: 53.0%  
 Test Distance: 5.780m [K=1.0000]  
 Remarks:

LUMINOUS DISTRIBUTION INTENSITY DATA

Test:U:220.3V I:0.1012A P:21.38W PF:0.9589 Lamp Flux:1903.79x1 lm		
NAME: C6F-20S-830	TYPE:Downlight	SERIAL No.:
SPEC.:3000K	DIM.: $\phi$ 169mm*H66mm	
MFR.: E-LITE LIGHTING CO.,LTD.		

Table--1

UNIT: cd

C (DEG) γ (DEG)	0	15	30	45	60	75	90	105	120	135	150	165	180	195	210	225	240	255	270
0	1018	1017	1016	1016	1015	1015	1014	1014	1013	1013	1013	1013	1018	1017	1016	1016	1015	1015	1014
5	1009	1009	1008	1007	1006	1006	1005	1005	1004	1004	1004	1004	1010	1008	1007	1006	1006	1005	1005
10	983	983	981	982	980	980	979	979	978	979	978	978	985	982	982	980	980	978	979
15	941	941	939	940	938	938	937	937	936	937	936	937	943	941	941	938	938	936	937
20	884	884	882	882	880	881	879	880	879	880	879	881	887	884	884	882	882	879	880
25	811	812	809	809	807	809	807	808	806	808	807	808	814	811	812	810	810	808	808
30	724	725	722	723	720	722	720	722	720	722	720	722	728	725	726	724	725	722	723
35	626	628	624	625	623	625	623	625	623	625	623	625	631	628	630	628	629	626	628
40	524	526	522	524	521	524	522	524	521	523	521	523	529	527	529	527	529	526	528
45	425	426	423	425	423	425	423	425	423	425	422	425	430	428	430	428	430	428	430
50	335	336	333	335	333	335	333	335	333	334	332	334	339	337	339	338	340	338	340
55	256	257	255	256	255	257	255	256	255	256	254	256	260	258	260	259	261	260	262
60	191	191	190	191	190	191	190	191	189	191	189	191	194	192	194	193	195	194	196
65	138	139	137	138	137	138	137	138	137	138	137	138	140	139	140	139	141	140	142
70	95.7	96.2	94.7	95.6	94.4	95.4	94.3	95.3	94.2	95.2	94.2	95.2	96.8	95.8	97.0	96.3	97.7	97.0	98.4
75	62.1	62.6	61.3	62.0	60.9	61.7	60.8	61.7	60.7	61.6	60.7	61.6	62.7	61.9	62.9	62.2	63.4	62.8	64.0
80	35.6	35.8	35.0	35.2	34.6	34.9	34.3	34.8	34.3	34.7	34.2	34.7	35.6	35.2	35.7	35.5	36.0	35.9	36.6
85	14.5	14.5	14.0	14.0	13.6	13.7	13.4	13.6	13.3	13.5	13.3	13.6	14.1	14.0	14.3	14.1	14.4	14.4	14.9
90	0.31	0.26	0.24	0.22	0.22	0.22	0.22	0.22	0.22	0.22	0.22	0.22	0.19	0.19	0.18	0.21	0.23	0.31	0.39

C Range: 0 - 360DEG  
C Interval: 15.0DEG  
Test Speed: HIGH  
Temperature:25.3DEG  
Operators:Cao Chengpei  
Test Date:2014-08-30

γ Range: 0 - 90DEG  
γ Interval: 1.0DEG  
Test System:EVERFINE GO-2000B\_V1 SYSTEM V2.0.288  
Humidity:53.0%  
Test Distance:5.780m [K=1.0000]  
Remarks:

LUMINOUS DISTRIBUTION INTENSITY DATA

Test:U:220.3V I:0.1012A P:21.38W PF:0.9589 Lamp Flux:1903.79x1 lm		
NAME: C6F-20S-830	TYPE:Downlight	SERIAL No.:
SPEC.:3000K	DIM.: φ169mm*H66mm	
MFR.: E-LITE LIGHTING CO.,LTD.		

Table--2

UNIT: cd

C (DEG) γ (DEG)	285	300	315	330	345														
0	1014	1013	1013	1013	1013														
5	1004	1004	1004	1004	1004														
10	977	978	978	979	978														
15	935	936	936	938	937														
20	878	879	879	881	880														
25	806	807	806	809	808														
30	720	722	721	723	722														
35	625	627	625	627	625														
40	525	527	525	527	524														
45	428	430	427	429	426														
50	338	340	337	338	336														
55	260	261	259	260	257														
60	194	195	193	194	192														
65	141	142	140	141	139														
70	97.5	98.5	97.2	97.8	96.3														
75	63.3	64.2	63.2	63.8	62.7														
80	36.4	36.9	36.5	36.7	36.2														
85	14.9	15.3	15.1	15.3	14.9														
90	0.49	0.55	0.59	0.57	0.56														

C Range: 0 - 360DEG  
 C Interval: 15.0DEG  
 Test Speed: HIGH  
 Temperature:25.3DEG  
 Operators:Cao Chengpei  
 Test Date:2014-08-30

γ Range: 0 - 90DEG  
 γ Interval: 1.0DEG  
 Test System:EVERFINE GO-2000B\_V1 SYSTEM V2.0.288  
 Humidity:53.0%  
 Test Distance:5.780m [K=1.0000]  
 Remarks:

Photometric Data Table [cd]

G/C	0.0	15.0	30.0	45.0	60.0	75.0	90.0	105.0	120.0	135.0
0.0	1018	1017	1016	1016	1015	1015	1014	1014	1013	1013
3.0	1015	1014	1013	1013	1012	1012	1011	1011	1010	1010
6.0	1005	1005	1004	1003	1002	1002	1001	1001	1000	1001
9.0	989.5	989.5	988.0	988.0	986.5	986.7	985.3	985.8	984.7	985.3
12.0	968.2	968.2	966.6	966.7	965.2	965.4	964.0	964.3	963.4	964.1
15.0	941.2	941.3	939.4	939.7	938.0	938.4	936.7	937.5	936.3	937.3
18.0	908.6	908.9	906.6	907.2	905.3	905.9	904.1	905.0	903.7	905.1
21.0	870.4	870.8	868.3	868.9	866.9	867.8	865.9	867.0	865.6	867.3
24.0	826.7	827.2	824.4	825.2	823.0	824.1	822.1	823.5	822.0	823.8
27.0	777.7	778.3	775.3	776.2	773.9	775.3	773.3	774.9	773.1	775.2
30.0	724.0	725.0	721.7	722.6	720.1	721.8	719.8	721.6	719.7	721.8
33.0	666.4	667.2	664.0	664.9	662.5	664.4	662.3	664.2	662.3	664.3
36.0	606.0	607.4	603.7	605.3	602.4	604.7	602.5	604.8	602.4	604.8
39.0	544.9	546.2	542.8	544.3	541.7	543.9	541.8	544.1	541.8	543.8
42.0	484.2	485.1	482.2	483.6	481.4	483.6	481.7	483.6	481.4	483.2
45.0	425.2	426.4	423.3	425.2	423.0	425.4	423.2	425.2	422.7	424.7
48.0	369.6	370.5	367.7	369.6	367.8	370.0	367.8	369.7	367.4	369.1
51.0	318.1	318.7	316.3	317.9	316.5	318.4	316.7	318.1	316.1	317.5
54.0	270.9	271.6	269.3	270.9	269.4	271.3	269.6	271.2	269.2	270.7
57.0	228.6	229.1	227.1	228.5	227.2	228.8	227.3	228.7	227.0	228.3
60.0	191.0	191.5	189.6	190.9	189.6	191.1	189.8	191.0	189.4	190.7
63.0	157.8	158.3	156.6	157.7	156.5	157.8	156.5	157.7	156.3	157.4
66.0	128.7	129.4	127.6	128.8	127.5	128.8	127.4	128.7	127.3	128.5
69.0	103.4	104.0	102.4	103.3	102.1	103.3	102.0	103.2	101.9	103.0
72.0	81.31	81.81	80.45	81.17	80.08	80.98	79.93	80.90	79.90	80.82
75.0	62.07	62.62	61.33	62.03	60.92	61.74	60.76	61.67	60.72	61.61
78.0	45.57	45.77	44.91	45.20	44.48	44.86	44.30	44.79	44.25	44.74
81.0	30.95	31.08	30.37	30.54	29.93	30.20	29.71	30.11	29.67	30.05
84.0	18.25	18.35	17.75	17.87	17.33	17.53	17.11	17.40	17.05	17.36
87.0	7.692	7.704	7.309	7.310	6.939	7.000	6.766	6.896	6.703	6.867
90.0	0.3119	0.2620	0.2392	0.2204	0.2204	0.2163	0.2225	0.2184	0.2204	0.2184
G/C	150.0	165.0	180.0	195.0	210.0	225.0	240.0	255.0	270.0	285.0
0.0	1013	1013	1018	1017	1016	1016	1015	1015	1014	1014
3.0	1010	1010	1015	1014	1013	1012	1012	1011	1011	1010
6.0	999.8	1000	1006	1004	1004	1002	1002	1001	1001	1000.0
9.0	984.3	984.9	990.8	988.8	988.3	986.6	986.5	984.8	985.0	984.0
12.0	963.2	963.9	969.9	967.7	967.4	965.3	965.2	963.3	963.6	962.3
15.0	936.3	937.3	943.4	940.8	940.8	938.4	938.4	936.2	936.6	935.1
18.0	904.0	905.2	911.4	908.5	908.8	906.1	906.3	903.8	904.4	902.5
21.0	866.1	867.4	873.5	870.5	871.0	868.5	868.9	866.1	866.7	864.6
24.0	822.5	824.0	830.2	827.1	828.0	825.3	826.0	823.1	823.7	821.3
27.0	773.7	775.4	781.3	778.3	779.4	776.8	777.9	774.9	775.5	773.0
30.0	720.1	722.0	727.9	724.7	726.5	723.7	725.2	721.9	723.0	720.1
33.0	662.5	664.6	670.4	667.5	669.4	666.9	668.5	665.5	666.5	663.8
36.0	602.4	604.9	610.5	607.8	610.1	607.4	609.3	606.1	607.8	604.9
39.0	541.5	543.8	549.3	547.0	549.2	546.9	548.6	546.0	547.6	545.3
42.0	481.0	483.1	488.8	486.6	488.9	486.6	488.7	486.2	488.2	485.7
45.0	422.4	424.7	430.0	427.7	430.3	427.9	430.4	428.1	430.3	427.9
48.0	367.1	369.2	374.1	372.1	374.3	372.5	374.9	373.1	375.1	373.0
51.0	315.9	317.7	322.0	320.3	322.3	320.8	323.2	321.6	323.6	321.6
54.0	268.9	270.7	274.7	272.8	274.9	273.5	275.9	274.5	276.5	274.6
57.0	226.9	228.4	231.8	230.3	232.0	231.0	233.1	232.0	233.9	232.3
60.0	189.3	190.7	193.6	192.1	193.9	192.8	195.0	193.8	195.8	194.1
63.0	156.2	157.4	160.0	158.7	160.2	159.3	161.1	160.4	162.0	160.7
66.0	127.2	128.5	130.6	129.2	130.7	129.9	131.6	130.8	132.3	131.2
69.0	101.9	103.0	104.7	103.6	104.9	104.1	105.7	104.9	106.4	105.4
72.0	79.79	80.81	82.24	81.33	82.46	81.74	83.01	82.44	83.71	82.94
75.0	60.69	61.60	62.71	61.88	62.91	62.24	63.36	62.78	63.99	63.33
78.0	44.20	44.71	45.73	45.27	45.88	45.54	46.21	46.00	46.78	46.54
81.0	29.61	30.04	30.88	30.53	31.04	30.72	31.30	31.12	31.82	31.66
84.0	17.01	17.38	17.96	17.78	18.12	17.93	18.30	18.23	18.78	18.78
87.0	6.446	6.643	7.354	7.129	7.394	7.322	7.570	7.543	7.968	8.044
90.0	0.2184	0.2163	0.1851	0.1892	0.1830	0.2059	0.2308	0.3057	0.3868	0.4908
G/C	300.0	315.0	330.0	345.0						
0.0	1013	1013	1013	1013						
3.0	1010	1010	1010	1009						
6.0	1000	999.9	1000	1000						
9.0	984.7	984.1	985.1	984.7						
12.0	963.5	962.8	964.1	963.7						
15.0	936.4	935.7	937.6	936.8						
18.0	904.1	903.3	905.5	904.6						
21.0	866.4	865.4	867.9	866.9						

C Range: 0 - 360DEG

C Interval: 15.0DEG

Test Speed: HIGH

Temperature: 25.3DEG

Operators: Cao Chengpei

Test Date: 2014-08-30

γ Range: 0 - 90DEG

γ Interval: 1.0DEG

Test System: EVERFINE GO-2000B\_V1 SYSTEM V2.0.288

Humidity: 53.0%

Test Distance: 5.780m [K=1.0000]

Remarks:

**Photometric Data Table [cd]**

24.0	823.1	822.1	824.8	823.7
27.0	774.9	773.6	776.3	775.1
30.0	722.4	720.6	723.3	721.6
33.0	665.9	663.9	666.4	664.5
36.0	607.2	604.8	607.3	604.9
39.0	547.3	544.9	546.6	544.3
42.0	487.9	485.1	486.8	484.0
45.0	429.9	427.0	428.6	425.6
48.0	374.6	372.0	373.3	370.3
51.0	323.1	320.6	321.7	318.9
54.0	276.2	273.6	274.6	271.9
57.0	233.4	231.3	232.0	229.8
60.0	195.4	193.2	194.1	191.9
63.0	161.7	160.0	160.6	158.8
66.0	132.2	130.6	131.3	129.6
69.0	106.4	104.9	105.7	104.1
72.0	83.84	82.65	83.25	81.97
75.0	64.21	63.21	63.79	62.69
78.0	47.09	46.51	46.81	46.17
81.0	32.17	31.72	32.01	31.46
84.0	19.18	18.92	19.11	18.75
87.0	8.374	8.225	8.363	8.112
90.0	0.5490	0.5885	0.5719	0.5594

C Range: 0 - 360DEG  
 C Interval: 15.0DEG  
 Test Speed: HIGH  
 Temperature: 25.3DEG  
 Operators: Cao Chengpei  
 Test Date: 2014-08-30

γ Range: 0 - 90DEG  
 γ Interval: 1.0DEG  
 Test System: EVERFINE GO-2000B\_V1 SYSTEM V2.0.288  
 Humidity: 53.0%  
 Test Distance: 5.780m [K=1.0000]  
 Remarks: