

LED Downlight CATO Series C6F-10S-830



Light Output Ratio:	100.0%	
Luminaire Power:	13.43 W	
SHR Nominal:	1.00	Calculated using the TM5
SHR Maximum:	1.15	fine grid method.

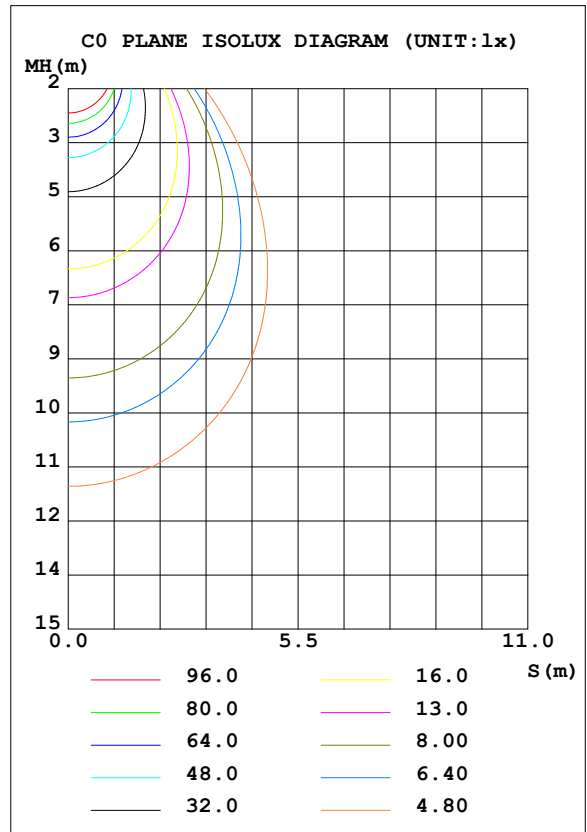
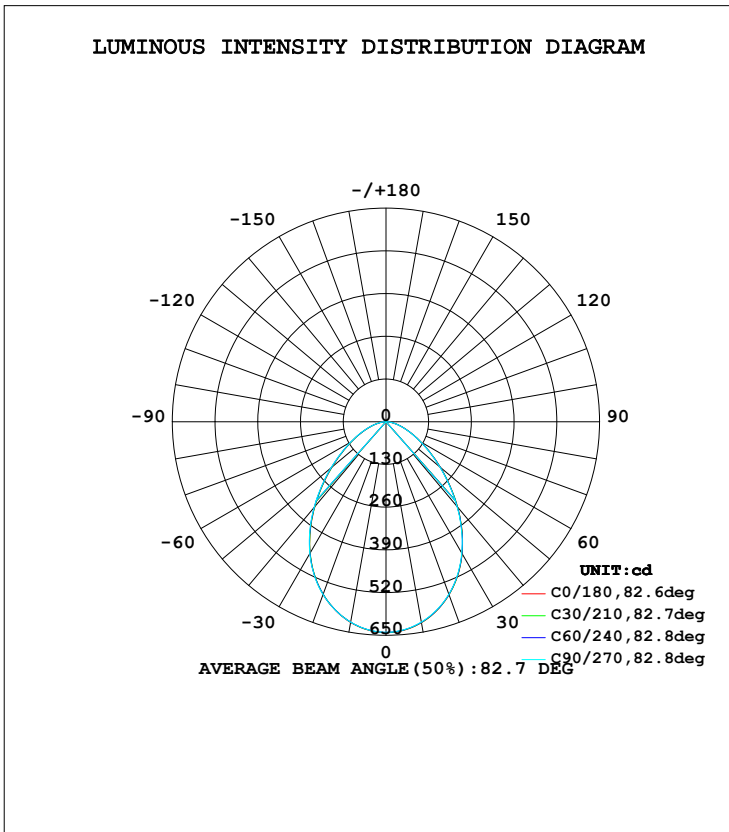
C Range: 0 - 360DEG
 C Interval: 15.0DEG
 Test Speed: HIGH
 Temperature: 25.3DEG
 Operators: Cao Chengpei
 Test Date: 2014-08-30

γ Range: 0 - 90DEG
 γ Interval: 1.0DEG
 Test System: EVERFINE GO-2000B_V1 SYSTEM V2.0.288
 Humidity: 53.0%
 Test Distance: 5.780m [K=1.0000]
 Remarks:

LUMINAIRE PHOTOMETRIC TEST REPORT

Test:U:220.3V I:0.0661A P:13.43W PF:0.9215 Lamp Flux:1214.97x1 lm		
NAME: C6F-10S-830	TYPE:Downlight	SERIAL No.:
SPEC.:3000K	DIM.: φ169mm*H66mm	
MFR.: E-LITE LIGHTING CO.,LTD.		

DATA OF LAMP		PHOTOMETRIC DATA Eff: 90.47 lm/W			
MODEL	SAMSUNG-3000K	I _{max} (cd)	642.0	S/MH (C0/180)	1.10
NOMINAL POWER (W)	13	LOR (%)	100.0	S/MH (C90/270)	1.10
RATED VOLTAGE (V)	220	TOTAL FLUX (lm)	1215.0	η UP, DN (C0-180)	0.0, 49.9
NOMINAL FLUX (lm)	1214.97	CIE CLASS	DIRECT	η UP, DN (C180-360)	0.0, 50.1
LAMPS INSIDE	1	η up (%)	0.0	CIBSE SHR NOM	1.00
TEST VOLTAGE (V)	220	η down (%)	100.0	CIBSE SHR MAX	1.15



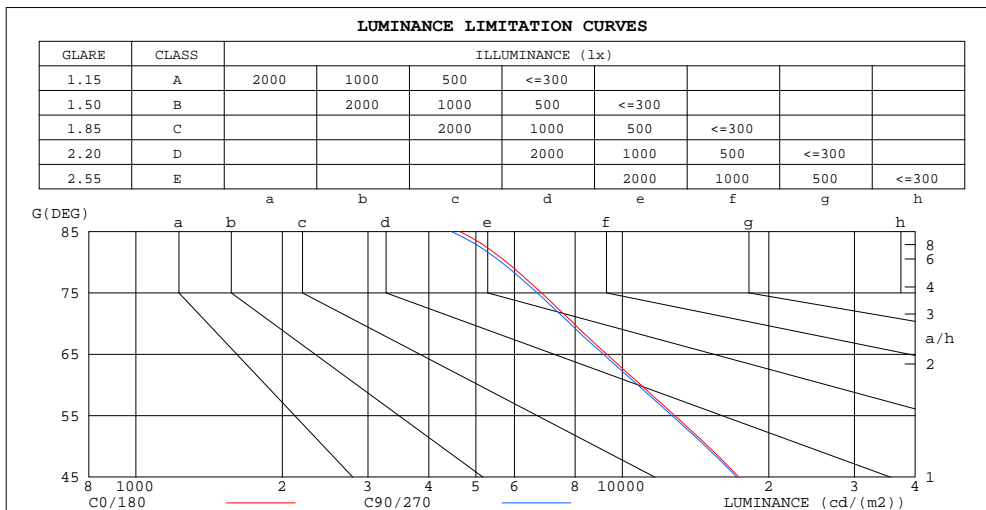
C Range: 0 - 360DEG
 C Interval: 15.0DEG
 Test Speed: HIGH
 Temperature: 25.3DEG
 Operators: Cao Chengpei
 Test Date: 2014-08-30

γ Range: 0 - 90DEG
 γ Interval: 1.0DEG
 Test System: EVERFINE GO-2000B_V1 SYSTEM V2.0.288
 Humidity: 53.0%
 Test Distance: 5.780m [K=1.0000]
 Remarks:

**ZONAL FLUX DIAGRAM
AND LUMINANCE LIMITATION CURVES**

ZONAL FLUX DIAGRAM:

γ	C0	C45	C90	C135	C180	C225	C270	C315	γ	Φ zone	Φ total	$\%lum, lamp$
10	621.0	620.6	619.1	618.7	620.3	618.8	619.4	619.1	0- 10	60.14	60.14	4.95,4.95
20	560.7	560.8	559.1	558.5	559.3	558.0	559.9	559.2	10- 20	167.0	227.2	18.7,18.7
30	463.6	464.0	461.4	461.3	461.8	461.0	463.9	463.3	20- 30	236.4	463.6	38.2,38.2
40	338.9	339.8	336.1	336.2	336.9	337.1	340.7	340.3	30- 40	250.7	714.3	58.8,58.8
50	216.3	216.6	213.6	213.4	214.3	214.8	218.7	217.9	40- 50	211.9	926.1	76.2,76.2
60	122.4	122.9	120.6	120.5	121.2	121.3	124.6	123.5	50- 60	148.0	1074	88.4,88.4
70	61.02	61.18	59.94	59.68	60.04	60.38	62.10	61.71	60- 70	87.95	1162	95.6,95.6
80	22.51	22.64	21.95	21.87	21.96	22.19	23.09	22.97	70- 80	42.29	1204	99.1,99.1
90	0.1601	0.1269	0.1269	0.1248	0.1019	0.1081	0.1435	0.2683	80- 90	10.60	1215	100,100
100									90-100			
110									100-110			
120									110-120			
130									120-130			
140									130-140			
150									140-150			
160									150-160			
170									160-170			
180									170-180			
DEG	LUMINOUS INTENSITY:cd									UNIT:lm		



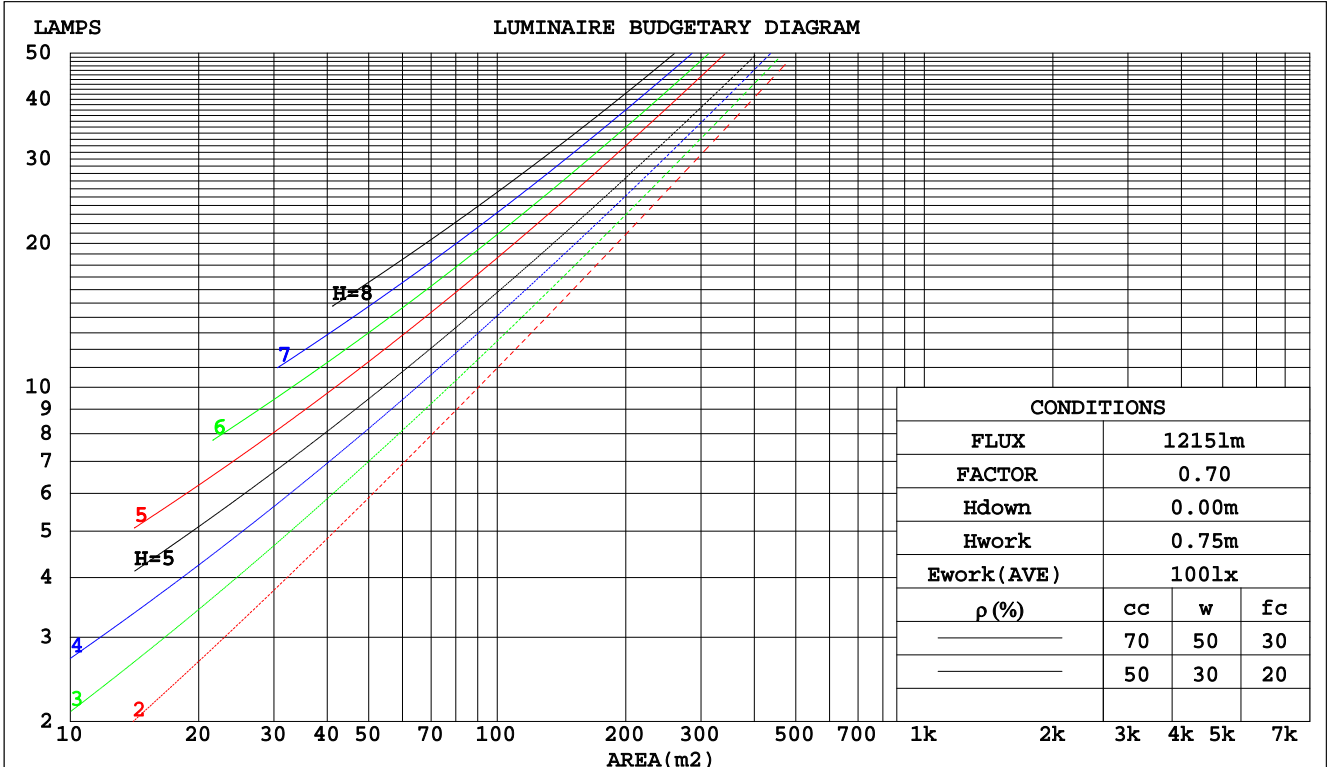
C Range: 0 - 360DEG
 C Interval: 15.0DEG
 Test Speed: HIGH
 Temperature:25.3DEG
 Operators:Cao Chengpei
 Test Date:2014-08-30

γ Range: 0 - 90DEG
 γ Interval: 1.0DEG
 Test System:EVERFINE GO-2000B_V1 SYSTEM V2.0.288
 Humidity:53.0%
 Test Distance:5.780m [K=1.0000]
 Remarks:

CU AND LUMINAIRE BUDGETARY ESTIMATE DIAGRAM

Test:U:220.3V I:0.0661A P:13.43W PF:0.9215 Lamp Flux:1214.97x1 lm		
NAME: C6F-10S-830	TYPE:Downlight	SERIAL No.:
SPEC.:3000K	DIM.: φ169mm*H66mm	
MFR.: E-LITE LIGHTING CO.,LTD.		

ρcc	80%			70%			50%			30%			10%			0
ρw	50%	30%	10%	50%	30%	10%	50%	30%	10%	50%	30%	10%	50%	30%	10%	0
ρfc	20%			20%			20%			20%			20%			0
RCR	RCR:Room Cavity Ratio															
	Coefficients of Utilization(CU)															
0.0	1.19	1.19	1.19	1.16	1.16	1.16	1.11	1.11	1.11	1.06	1.06	1.06	1.02	1.02	1.02	.00
1.0	1.07	1.03	.00	1.04	1.01	.98	1.00	.97	.95	.96	.94	.92	.93	.91	.89	.87
2.0	.95	.89	.84	.93	.88	.83	.90	.85	.81	.87	.83	.80	.84	.81	.78	.76
3.0	.85	.78	.72	.84	.77	.72	.81	.75	.71	.78	.73	.69	.76	.72	.68	.66
4.0	.77	.69	.63	.75	.68	.63	.73	.67	.62	.71	.65	.61	.69	.64	.60	.58
5.0	.70	.61	.56	.68	.61	.55	.66	.60	.55	.65	.59	.54	.63	.58	.54	.52
6.0	.63	.55	.49	.62	.55	.49	.61	.54	.49	.59	.53	.48	.58	.52	.48	.46
7.0	.58	.50	.44	.57	.50	.44	.56	.49	.44	.54	.48	.44	.53	.48	.43	.42
8.0	.53	.46	.40	.53	.45	.40	.51	.45	.40	.50	.44	.40	.49	.44	.39	.38
9.0	.49	.42	.37	.49	.42	.37	.48	.41	.36	.47	.41	.36	.46	.40	.36	.34
10.0	.46	.38	.34	.45	.38	.34	.44	.38	.33	.43	.38	.33	.43	.37	.33	.32



C Range: 0 - 360DEG
 C Interval: 15.0DEG
 Test Speed: HIGH
 Temperature:25.3DEG
 Operators:Cao Chengpei
 Test Date:2014-08-30

γ Range: 0 - 90DEG
 γ Interval: 1.0DEG
 Test System:EVERFINE GO-2000B_V1 SYSTEM V2.0.288
 Humidity:53.0%
 Test Distance:5.780m [K=1.0000]
 Remarks:

WEC AND CCEC

Test:U:220.3V I:0.0661A P:13.43W PF:0.9215 Lamp Flux:1214.97x1 lm		
NAME: C6F-10S-830	TYPE:Downlight	SERIAL No.:
SPEC.:3000K	DIM.: φ169mm*H66mm	
MFR.: E-LITE LIGHTING CO.,LTD.		

ρcc	80%			70%			50%			30%			10%			0
ρw	50%	30%	10%	50%	30%	10%	50%	30%	10%	50%	30%	10%	50%	30%	10%	0
ρfc	20%			20%			20%			20%			20%			0
RCR	RCR:Room Cavity Ratio						Wall Exitance Coefficients(WEC)									
0.0																
1.0	.258	.147	.047	.251	.143	.046	.238	.137	.044	.226	.131	.042	.215	.125	.040	
2.0	.248	.136	.042	.242	.133	.041	.230	.128	.040	.220	.123	.039	.210	.119	.037	
3.0	.233	.124	.037	.228	.122	.037	.218	.118	.036	.209	.114	.035	.200	.111	.034	
4.0	.218	.113	.033	.214	.112	.033	.205	.109	.032	.197	.106	.032	.189	.103	.031	
5.0	.204	.104	.030	.200	.103	.030	.192	.100	.029	.185	.098	.029	.179	.095	.029	
6.0	.192	.096	.027	.188	.095	.027	.181	.093	.027	.175	.091	.027	.169	.089	.026	
7.0	.180	.089	.025	.177	.088	.025	.171	.086	.025	.165	.085	.025	.159	.083	.024	
8.0	.169	.083	.023	.167	.082	.023	.161	.080	.023	.156	.079	.023	.151	.078	.023	
9.0	.160	.077	.022	.157	.077	.022	.152	.075	.021	.148	.074	.021	.143	.073	.021	
10.0	.151	.073	.020	.149	.072	.020	.145	.071	.020	.140	.070	.020	.136	.069	.020	

ρcc	80%			70%			50%			30%			10%			0
ρw	50%	30%	10%	50%	30%	10%	50%	30%	10%	50%	30%	10%	50%	30%	10%	0
ρfc	20%			20%			20%			20%			20%			0
RCR	RCR:Room Cavity Ratio						Ceiling Cavity Exitance Coefficients(CCEC)									
0.0	.190	.190	.190	.163	.163	.163	.111	.111	.111	.064	.064	.064	.020	.020	.020	
1.0	.177	.157	.138	.151	.134	.119	.103	.092	.082	.060	.054	.048	.019	.017	.015	
2.0	.166	.132	.103	.142	.114	.089	.098	.079	.062	.056	.046	.037	.018	.015	.012	
3.0	.157	.114	.080	.135	.098	.069	.093	.068	.048	.053	.040	.029	.017	.013	.009	
4.0	.149	.100	.063	.128	.087	.055	.088	.060	.039	.051	.035	.023	.016	.012	.007	
5.0	.142	.090	.051	.122	.077	.044	.084	.054	.031	.049	.032	.019	.016	.010	.006	
6.0	.135	.081	.042	.116	.070	.037	.080	.049	.026	.046	.029	.015	.015	.009	.005	
7.0	.128	.074	.036	.110	.064	.031	.076	.045	.022	.044	.026	.013	.014	.009	.004	
8.0	.122	.068	.031	.105	.059	.027	.073	.041	.019	.042	.024	.011	.014	.008	.004	
9.0	.117	.063	.027	.100	.055	.023	.070	.038	.017	.041	.023	.010	.013	.007	.003	
10.0	.111	.059	.024	.096	.051	.021	.067	.036	.015	.039	.021	.009	.013	.007	.003	

C Range: 0 - 360DEG
 C Interval: 15.0DEG
 Test Speed: HIGH
 Temperature:25.3DEG
 Operators:Cao Chengpei
 Test Date:2014-08-30

γ Range: 0 - 90DEG
 γ Interval: 1.0DEG
 Test System:EVERFINE GO-2000B_V1 SYSTEM V2.0.288
 Humidity:53.0%
 Test Distance:5.780m [K=1.0000]
 Remarks:

UGR(Unified Glare Rating) Table

Test:U:220.3V I:0.0661A P:13.43W PF:0.9215 Lamp Flux:1214.97x1 lm		
NAME: C6F-10S-830	TYPE:Downlight	SERIAL No.:
SPEC.:3000K	DIM.: φ169mm*H66mm	
MFR.: E-LITE LIGHTING CO.,LTD.		

ceiling/cavity	0.7	0.7	0.5	0.5	0.3	0.7	0.7	0.5	0.5	0.3
walls	0.5	0.3	0.5	0.3	0.3	0.5	0.3	0.5	0.3	0.3
working plane	0.2	0.2	0.2	0.2	0.2	0.2	0.2	0.2	0.2	0.2
Room dimensions	Viewed crosswise					Viewed endwise				
x = 2H y = 2H	21.1	22.4	21.3	22.6	22.8	21.0	22.4	21.3	22.5	22.7
3H	21.8	23.0	22.1	23.3	23.5	21.8	23.0	22.0	23.2	23.4
4H	22.1	23.3	22.4	23.5	23.7	22.0	23.2	22.3	23.4	23.7
6H	22.3	23.4	22.6	23.6	23.9	22.2	23.3	22.5	23.6	23.8
8H	22.3	23.4	22.6	23.6	23.9	22.2	23.3	22.6	23.6	23.9
12H	22.3	23.3	22.7	23.6	23.9	22.2	23.3	22.6	23.6	23.8
4H 2H	21.4	22.5	21.7	22.8	23.0	21.3	22.5	21.6	22.7	23.0
3H	22.3	23.3	22.6	23.6	23.9	22.2	23.3	22.6	23.5	23.8
4H	22.7	23.6	23.0	23.9	24.2	22.6	23.5	23.0	23.9	24.2
6H	22.9	23.8	23.3	24.1	24.5	22.9	23.7	23.3	24.0	24.4
8H	23.0	23.8	23.4	24.2	24.5	23.0	23.7	23.4	24.1	24.5
12H	23.1	23.8	23.5	24.2	24.6	23.0	23.7	23.4	24.1	24.5
8H 4H	22.8	23.5	23.2	23.9	24.3	22.7	23.5	23.1	23.8	24.2
6H	23.2	23.8	23.6	24.2	24.6	23.1	23.7	23.5	24.1	24.6
8H	23.3	23.9	23.8	24.3	24.7	23.2	23.8	23.7	24.2	24.7
12H	23.4	23.9	23.9	24.3	24.8	23.3	23.8	23.8	24.3	24.7
12H 4H	22.8	23.5	23.2	23.8	24.2	22.7	23.4	23.1	23.8	24.2
6H	23.2	23.7	23.6	24.1	24.6	23.1	23.7	23.6	24.1	24.5
8H	23.3	23.8	23.8	24.3	24.7	23.3	23.8	23.8	24.2	24.7
Variations with the observer position at spacings:										
S = 1.0H	+ 0.4 / - 0.5					+ 0.4 / - 0.5				
1.5H	+ 0.2 / - 0.3					+ 0.2 / - 0.3				
2.0H	+ 0.8 / - 0.7					+ 0.8 / - 0.7				

CIE Pub.117 Corrected 1215 lm Total Lamp Luminous Flux.(8log(F/F0) = 0.7)

C Range: 0 - 360DEG
 C Interval: 15.0DEG
 Test Speed: HIGH
 Temperature:25.3DEG
 Operators:Cao Chengpei
 Test Date:2014-08-30

γ Range: 0 - 90DEG
 γ Interval: 1.0DEG
 Test System:EVERFINE GO-2000B_V1 SYSTEM V2.0.288
 Humidity:53.0%
 Test Distance:5.780m [K=1.0000]
 Remarks:

UTILIZATION FACTORS TABLE

Test:U:220.3V I:0.0661A P:13.43W PF:0.9215 Lamp Flux:1214.97x1 lm		
NAME: C6F-10S-830	TYPE:Downlight	SERIAL No.:
SPEC.:3000K	DIM.: φ169mm*H66mm	
MFR.: E-LITE LIGHTING CO.,LTD.		

REFLECTANCE										
Ceiling	0.8	0.8	0.8	0.7	0.7	0.7	0.5	0.5	0.5	0
Walls	0.7	0.5	0.3	0.7	0.5	0.3	0.7	0.5	0.3	0
Working plane	0.2	0.2	0.2	0.2	0.2	0.2	0.2	0.2	0.2	0
ROOM INDEX	UTILIZATION FACTORS(PERCENT) $k(RI) \times RCR = 5$									
k = 0.60	66	56	49	65	55	49	64	55	49	44
0.80	76	66	59	75	65	59	73	65	59	53
1.00	83	74	68	82	73	68	80	74	67	61
1.25	90	81	75	88	80	75	86	79	74	68
1.50	94	86	80	93	85	80	90	84	79	72
2.00	100	93	88	98	92	87	95	90	85	78
2.50	103	97	92	101	95	91	97	93	89	81
3.00	106	100	96	104	99	95	100	96	92	85
4.00	109	104	100	107	103	99	103	99	96	88
5.00	111	107	104	109	105	102	104	101	99	90
ROOM INDEX	UF(total)									Direct
According to DIN EN 13032-2 2004			Suspended				SHRNOM = 1.25			

C Range: 0 - 360DEG
 C Interval: 15.0DEG
 Test Speed: HIGH
 Temperature:25.3DEG
 Operators:Cao Chengpei
 Test Date:2014-08-30

γ Range: 0 - 90DEG
 γ Interval: 1.0DEG
 Test System:EVERFINE GO-2000B_V1 SYSTEM V2.0.288
 Humidity:53.0%
 Test Distance:5.780m [K=1.0000]
 Remarks:

ISOCANDELA DIAGRAM

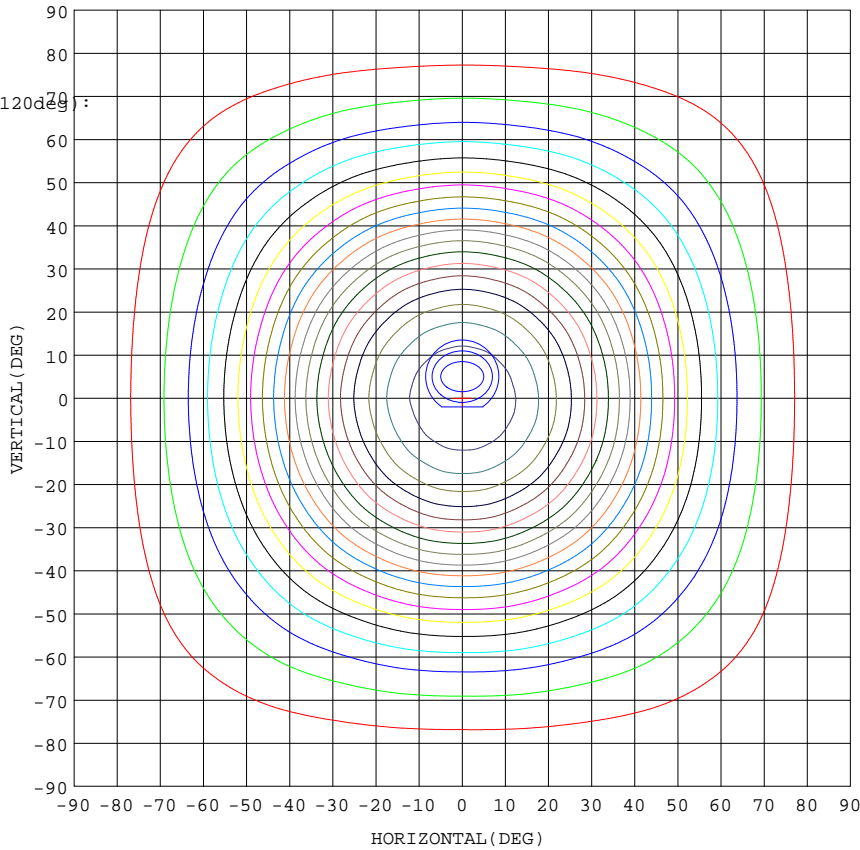
Test:U:220.3V I:0.0661A P:13.43W PF:0.9215 Lamp Flux:1214.97x1 lm		
NAME: C6F-10S-830	TYPE:Downlight	SERIAL No.:
SPEC.:3000K	DIM.: φ169mm*H66mm	
MFR.: E-LITE LIGHTING CO.,LTD.		

Conical surface Flux(90deg):

827.44 lm
 %lum = 68.1%
 %lamp = 68.1%

Conical surface Flux(120deg):

1074.1 lm
 %lum = 88.4%
 %lamp = 88.4%



1. AVG=633.1,MIN=625.0
2. AVG=630.7,MIN=615.0
3. AVG=627.4,MIN=602.7

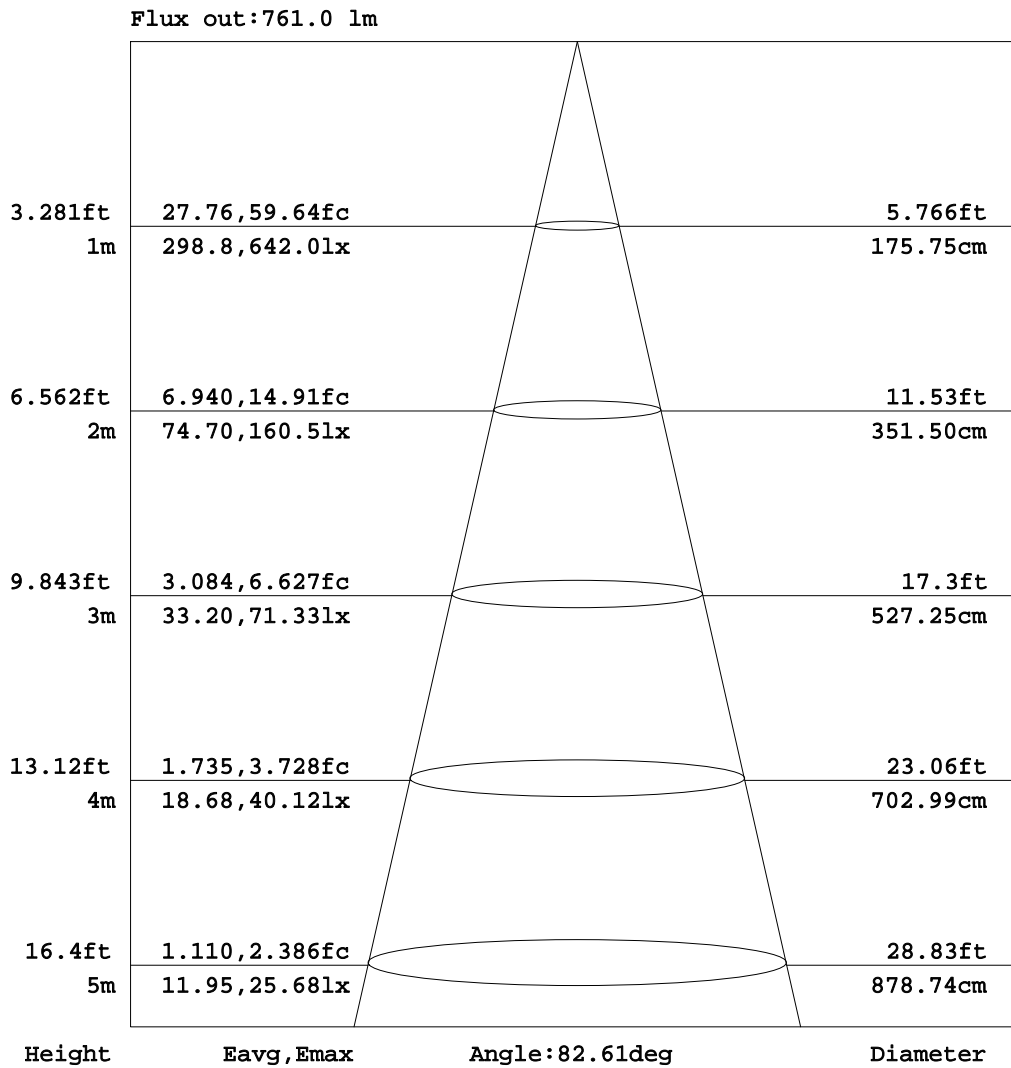
Imax:642.0(H0.0,V0.0)
 (At:C=0.0,Gamma=0.0)
 UNIT: cd

C Range: 0 - 360DEG
 C Interval: 15.0DEG
 Test Speed: HIGH
 Temperature:25.3DEG
 Operators:Cao Chengpei
 Test Date:2014-08-30

γ Range: 0 - 90DEG
 γ Interval: 1.0DEG
 Test System:EVERFINE GO-2000B_V1 SYSTEM V2.0.288
 Humidity:53.0%
 Test Distance:5.780m [K=1.0000]
 Remarks:

AAI Figure

Test:U:220.3V I:0.0661A P:13.43W PF:0.9215 Lamp Flux:1214.97x1 lm		
NAME: C6F-10S-830	TYPE:Downlight	SERIAL No.:
SPEC.:3000K	DIM.: φ169mm*H66mm	
MFR.: E-LITE LIGHTING CO.,LTD.		



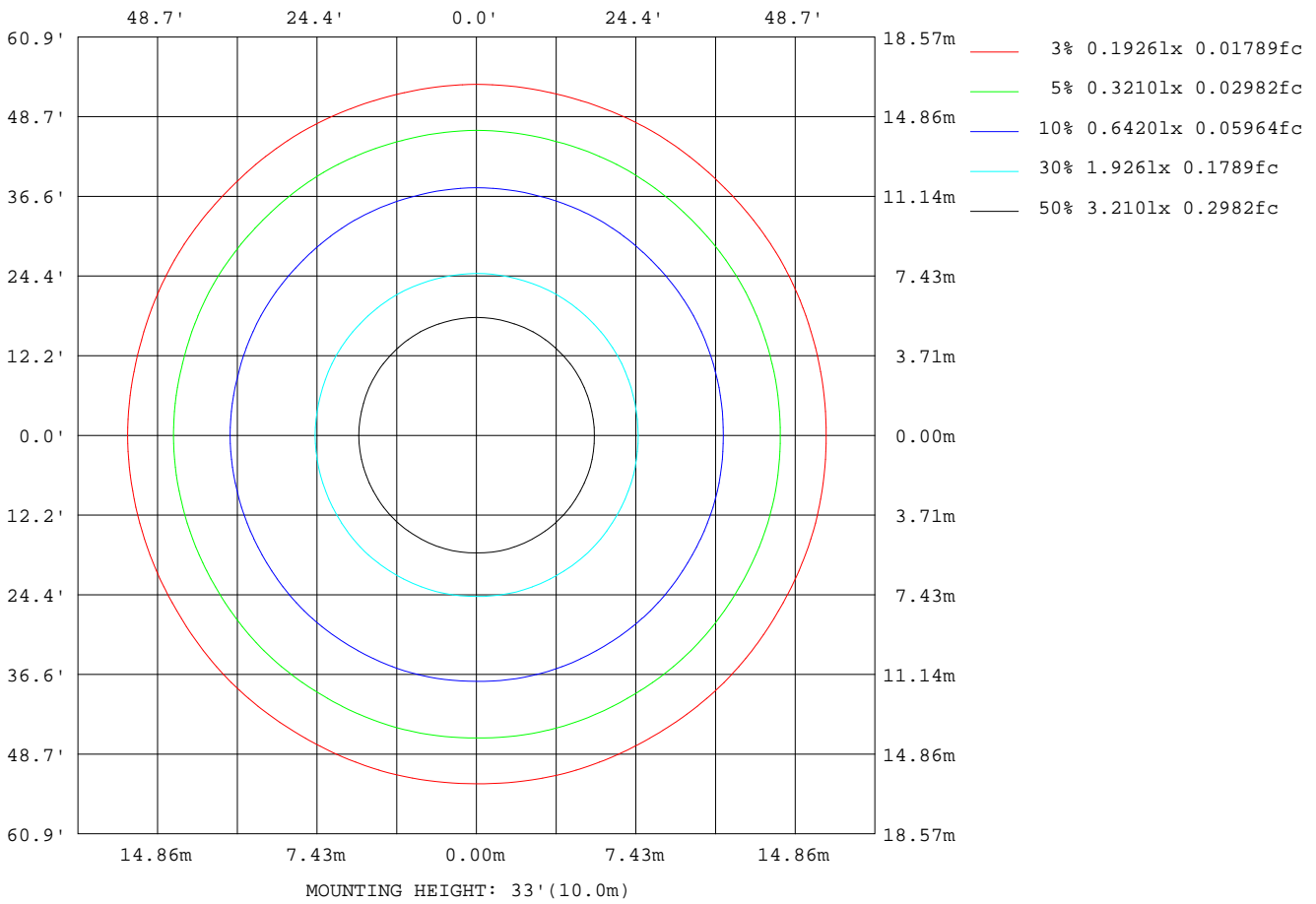
Note:The Curves indicate the illuminated area and the average illumination when the luminaire is at different distance.

C Range: 0 - 360DEG
C Interval: 15.0DEG
Test Speed: HIGH
Temperature:25.3DEG
Operators:Cao Chengpei
Test Date:2014-08-30

γ Range: 0 - 90DEG
γ Interval: 1.0DEG
Test System:EVERFINE GO-2000B_V1 SYSTEM V2.0.288
Humidity:53.0%
Test Distance:5.780m [K=1.0000]
Remarks:

ISOLUX DIAGRAM

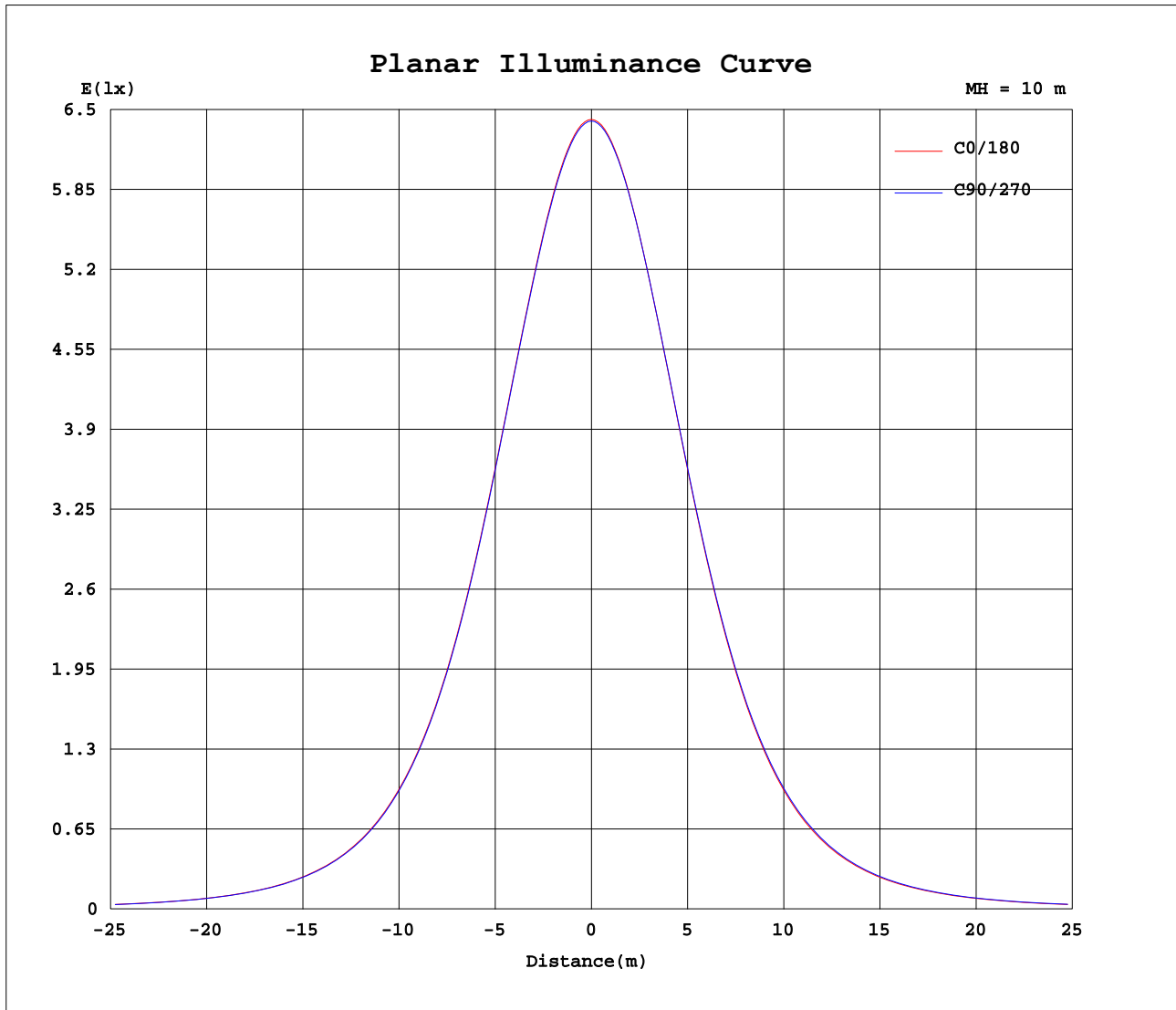
Test:U:220.3V I:0.0661A P:13.43W PF:0.9215 Lamp Flux:1214.97x1 lm		
NAME: C6F-10S-830	TYPE:Downlight	SERIAL No.:
SPEC.:3000K	DIM.: φ169mm*H66mm	
MFR.: E-LITE LIGHTING CO.,LTD.		



C Range: 0 - 360DEG
 C Interval: 15.0DEG
 Test Speed: HIGH
 Temperature:25.3DEG
 Operators:Cao Chengpei
 Test Date:2014-08-30

γ Range: 0 - 90DEG
 γ Interval: 1.0DEG
 Test System:EVERFINE GO-2000B_V1 SYSTEM V2.0.288
 Humidity:53.0%
 Test Distance:5.780m [K=1.0000]
 Remarks:

Planar Illuminance Curve



C Range: 0 - 360DEG
 C Interval: 15.0DEG
 Test Speed: HIGH
 Temperature: 25.3DEG
 Operators: Cao Chengpei
 Test Date: 2014-08-30

γ Range: 0 - 90DEG
 γ Interval: 1.0DEG
 Test System: EVERFINE GO-2000B_V1 SYSTEM V2.0.288
 Humidity: 53.0%
 Test Distance: 5.780m [K=1.0000]
 Remarks:

Photometric Data Table [cd]

G/C	0.0	15.0	30.0	45.0	60.0	75.0	90.0	105.0	120.0	135.0
0.0	642.0	641.7	641.6	641.3	640.9	640.7	640.7	640.5	640.4	640.3
3.0	640.1	640.0	639.6	639.5	639.0	638.9	638.6	638.5	638.2	638.2
6.0	634.3	634.4	633.9	633.8	633.2	633.2	632.6	632.7	632.2	632.2
9.0	624.9	625.1	624.3	624.5	623.7	623.9	623.1	623.3	622.5	622.6
12.0	611.9	612.2	611.5	611.6	610.8	611.0	610.0	610.4	609.5	609.7
15.0	595.5	596.0	595.1	595.3	594.4	594.6	593.7	594.1	592.9	593.2
18.0	575.7	576.4	575.4	575.7	574.6	575.0	574.1	574.5	573.2	573.5
21.0	552.6	553.4	552.2	552.7	551.5	552.1	551.0	551.4	550.1	550.4
24.0	526.1	526.9	525.7	526.3	525.0	525.7	524.4	524.9	523.6	523.9
27.0	496.4	497.3	495.9	496.7	495.3	496.0	494.4	495.2	493.7	494.1
30.0	463.6	464.6	463.2	464.0	462.6	463.2	461.4	462.3	460.8	461.3
33.0	428.0	429.1	427.7	428.6	426.9	427.5	425.6	426.5	424.9	425.6
36.0	390.5	391.9	390.2	391.4	389.3	390.1	387.8	388.9	387.0	388.1
39.0	352.0	353.3	351.7	352.8	350.7	351.3	349.1	350.0	348.3	349.3
42.0	313.2	314.3	312.9	313.8	311.9	312.4	310.3	311.0	309.5	310.3
45.0	275.2	276.4	274.7	275.9	273.8	274.5	272.3	273.1	271.4	272.4
48.0	239.0	240.0	238.5	239.4	237.7	238.3	236.3	237.0	235.3	236.0
51.0	205.4	206.2	204.8	205.6	204.1	204.6	202.8	203.4	201.8	202.4
54.0	174.5	175.4	174.0	174.8	173.3	173.9	172.2	172.9	171.2	171.9
57.0	146.9	147.7	146.4	147.1	145.7	146.3	144.9	145.3	143.9	144.4
60.0	122.4	123.4	121.9	122.9	121.4	122.3	120.6	121.4	119.8	120.5
63.0	100.8	101.6	100.5	101.2	100.0	100.6	99.30	99.85	98.55	99.11
66.0	82.03	82.83	81.72	82.50	81.38	82.00	80.72	81.29	80.09	80.65
69.0	65.74	66.44	65.50	66.16	65.18	65.74	64.59	65.16	64.05	64.59
72.0	51.82	52.22	51.64	51.99	51.38	51.63	50.90	51.10	50.42	50.65
75.0	39.57	39.93	39.42	39.74	39.19	39.43	38.78	38.99	38.41	38.64
78.0	28.87	29.14	28.75	29.02	28.57	28.75	28.24	28.39	27.92	28.11
81.0	19.54	19.77	19.46	19.66	19.32	19.44	19.04	19.16	18.80	18.95
84.0	11.47	11.64	11.39	11.57	11.28	11.40	11.07	11.17	10.90	11.04
87.0	4.757	4.849	4.705	4.805	4.634	4.693	4.496	4.552	4.398	4.481
90.0	0.1601	0.1414	0.1393	0.1269	0.1269	0.1227	0.1269	0.1248	0.1269	0.1248
G/C	150.0	165.0	180.0	195.0	210.0	225.0	240.0	255.0	270.0	285.0
0.0	640.1	640.1	642.0	641.7	641.6	641.3	640.9	640.7	640.7	640.5
3.0	637.9	638.0	639.9	639.5	639.4	638.9	638.9	638.5	638.6	638.5
6.0	631.8	632.0	633.9	633.3	633.3	632.7	632.9	632.5	632.7	632.6
9.0	622.0	622.2	624.3	623.3	623.5	622.9	623.3	622.9	623.2	623.0
12.0	608.8	609.0	611.1	610.0	610.3	609.5	610.2	609.8	610.4	609.9
15.0	592.1	592.4	594.4	593.2	593.7	592.9	593.8	593.2	594.2	593.5
18.0	572.1	572.5	574.5	573.3	573.9	573.1	574.1	573.5	574.8	574.0
21.0	548.9	549.2	551.3	550.0	550.8	549.9	551.2	550.5	552.0	551.1
24.0	522.3	522.7	524.7	523.4	524.3	523.4	525.0	524.3	525.7	525.0
27.0	492.4	492.8	494.8	493.3	494.5	493.6	495.5	494.7	496.3	495.4
30.0	459.5	460.0	461.8	460.3	461.7	461.0	463.0	462.2	463.9	462.9
33.0	423.6	424.1	426.2	424.6	426.4	425.7	427.8	427.1	428.9	427.8
36.0	385.9	386.6	388.7	387.1	389.1	388.4	390.7	389.9	391.9	390.8
39.0	347.2	347.9	349.8	348.6	350.6	350.0	352.3	351.7	353.5	352.6
42.0	308.4	309.0	311.0	309.8	312.0	311.3	313.9	313.1	315.1	314.1
45.0	270.3	271.2	273.2	271.8	274.0	273.5	276.1	275.4	277.4	276.5
48.0	234.2	235.1	237.0	235.9	237.9	237.5	239.9	239.5	241.4	240.5
51.0	200.8	201.6	203.3	202.3	204.1	203.8	206.2	205.9	207.7	206.8
54.0	170.3	171.2	172.8	171.8	173.5	173.2	175.4	175.1	176.9	176.0
57.0	143.0	143.8	145.3	144.5	146.0	145.7	147.7	147.5	149.1	148.3
60.0	119.0	120.1	121.2	120.1	121.9	121.3	123.3	122.8	124.6	123.6
63.0	97.89	98.63	99.71	98.96	100.3	99.96	101.6	101.3	102.7	102.0
66.0	79.50	80.26	81.15	80.39	81.62	81.25	82.79	82.45	83.72	83.04
69.0	63.55	64.25	64.97	64.28	65.40	65.03	66.39	66.05	67.17	66.55
72.0	50.02	50.34	50.97	50.62	51.31	51.24	52.16	52.10	52.79	52.53
75.0	38.07	38.36	38.82	38.52	39.10	39.10	39.83	39.78	40.36	40.13
78.0	27.66	27.89	28.25	28.00	28.47	28.50	29.11	29.06	29.52	29.36
81.0	18.58	18.74	19.04	18.81	19.22	19.23	19.76	19.71	20.10	19.94
84.0	10.74	10.85	11.04	10.89	11.18	11.24	11.63	11.63	11.90	11.82
87.0	4.150	4.163	4.162	4.162	4.162	4.162	4.162	4.162	4.162	4.162
90.0	0.1248	0.1227	0.1019	0.1081	0.0998	0.1081	0.1061	0.1373	0.1435	0.2038
G/C	300.0	315.0	330.0	345.0						
0.0	640.4	640.3	640.1	640.1						
3.0	638.6	638.5	638.5	638.4						
6.0	632.9	632.7	632.9	632.7						
9.0	623.6	623.1	623.7	623.4						
12.0	610.7	610.1	610.8	610.5						
15.0	594.5	593.6	594.5	594.1						
18.0	574.8	574.0	574.9	574.5						
21.0	552.1	551.1	552.1	551.5						

C Range: 0 - 360DEG

C Interval: 15.0DEG

Test Speed: HIGH

Temperature: 25.3DEG

Operators: Cao Chengpei

Test Date: 2014-08-30

γ Range: 0 - 90DEG

γ Interval: 1.0DEG

Test System: EVERFINE GO-2000B_V1 SYSTEM V2.0.288

Humidity: 53.0%

Test Distance: 5.780m [K=1.0000]

Remarks:

Photometric Data Table [cd]

24.0	526.0	525.0	526.0	525.2
27.0	496.7	495.7	496.8	495.8
30.0	464.5	463.3	464.4	463.2
33.0	429.5	428.3	429.5	428.1
36.0	392.6	391.3	392.7	390.9
39.0	354.3	353.2	354.3	352.6
42.0	316.1	314.7	315.9	314.0
45.0	278.3	276.9	278.1	276.1
48.0	242.0	240.7	241.7	240.0
51.0	208.3	206.9	207.8	206.2
54.0	177.3	176.0	177.0	175.4
57.0	149.4	148.2	149.0	147.7
60.0	124.8	123.5	124.5	123.0
63.0	103.0	101.9	102.6	101.5
66.0	83.96	82.92	83.64	82.65
69.0	67.36	66.43	67.13	66.21
72.0	53.00	52.49	52.81	52.28
75.0	40.57	40.08	40.39	39.93
78.0	29.70	29.36	29.58	29.22
81.0	20.26	19.96	20.16	19.86
84.0	12.03	11.85	11.96	11.76
87.0	5.201	5.070	5.140	4.989
90.0	0.2225	0.2683	0.2599	0.2745

C Range: 0 - 360DEG
 C Interval: 15.0DEG
 Test Speed: HIGH
 Temperature: 25.3DEG
 Operators: Cao Chengpei
 Test Date: 2014-08-30

γ Range: 0 - 90DEG
 γ Interval: 1.0DEG
 Test System: EVERFINE GO-2000B_V1 SYSTEM V2.0.288
 Humidity: 53.0%
 Test Distance: 5.780m [K=1.0000]
 Remarks: