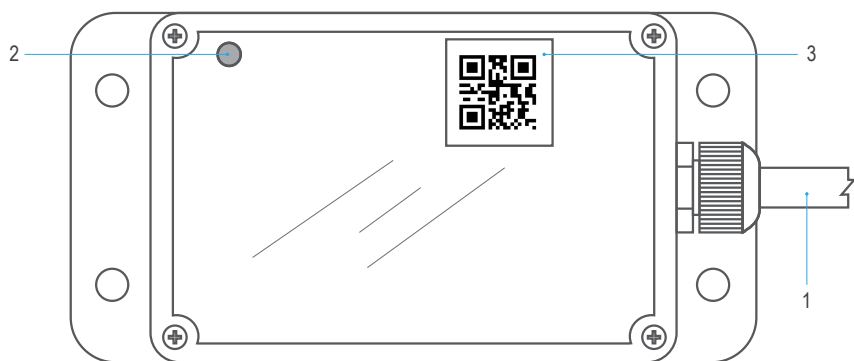


# The Instructions for Light Sensor

## 1. The introduction







The light sensor, the matching product for zigbee dimming system, is used to sense light illumination, form the electrical signal and issue the dimming order through zigbee. You can choose the product when you need to adjust the light according to the change of light.

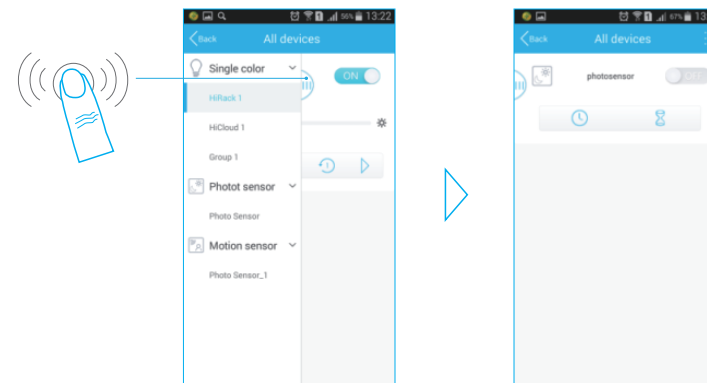



light sensor

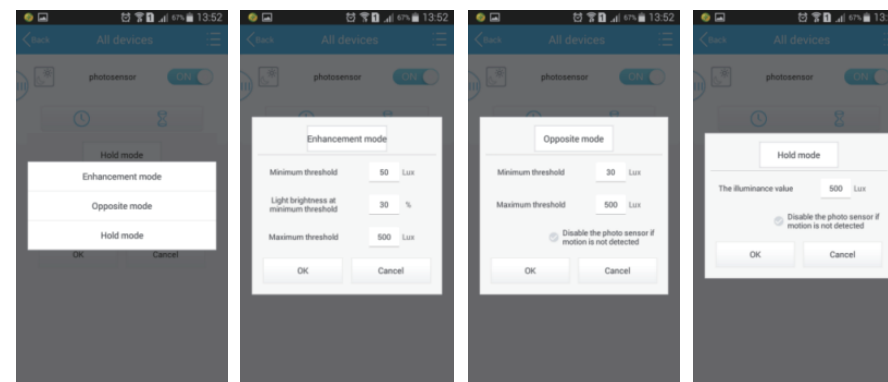
- (1) The power wire: providing the power through connecting to AC electricity.
- (2) Light sensing probe: sensing the illumination and turn it into the electrical signal.
- (3) QR code: scan the QR code with the scanner of iLightsIn in your phone and add the product as the zigbee system equipment.

## 2. The instructions

- (1) Connecting the driver through plug.
- (2) Connect your phone to the WIFI hotspot of zigbee and launch the iLightsIn. Click  →  → **Add by QR code** by sequence and add the product as the zigbee system equipment.
- (3) In the noninterference of iLightsIn click  → **Binding settings** to enter the interface of binding devices. Then bind the device and the lamp being controlled.
- (4) After completing the step, go back to the main interface to click  →  →  to find the device and set the relative parameters.



- (5) Click the icon  on the top right of the interface to set the models of controlling and choose the suitable controlling model (enhancement mode, opposite mode or hold mode). Then set the relative parameters in line with prompting interface.
- (6) After setting the parameters, click "ok" to quit. Thus the light being controlled work in accordance with the parameters.



## 3. Tips

- (1) During the process of installing the product, you have to stick the base of the product on the wall horizontally in order to make the pc panel outward and parallel to the wall, which will avoid being covered by the dust. At the same time, you have to make sure that the probe is exposed to the environment and not blocked by other objects for sensing the change of light accurately. Besides, people should scrub the panel and keep it clean in the daily maintenance.
- (2) Before dimming, you have to add the light sensor as the controlled equipment with the application in your phone. What's more, you have to take the operations of adding devices and dimming under the condition of connecting power.
- (3) The signal wire play its role in connecting to the motion sensor. During the other time, you have to let it hang in the air without connected and wrap the thread end well with tape.