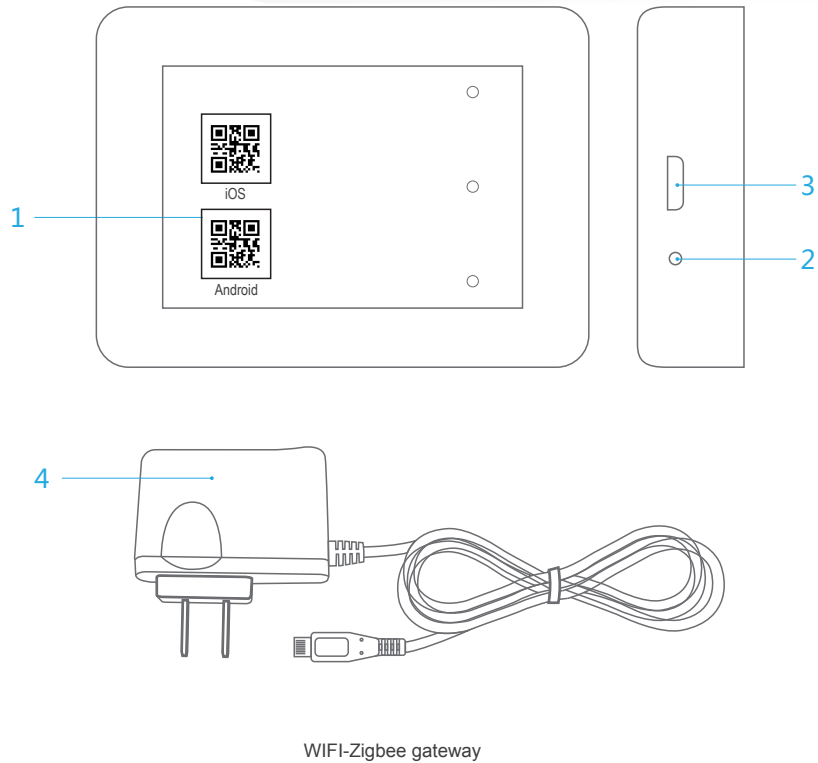


The Instructions for Zigbee Gateway

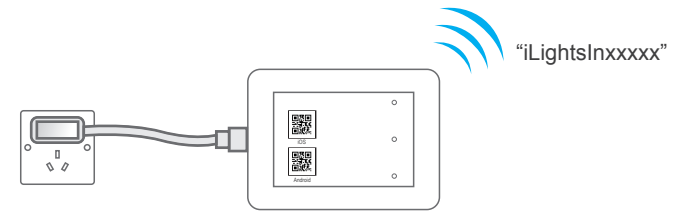
1. The introduction



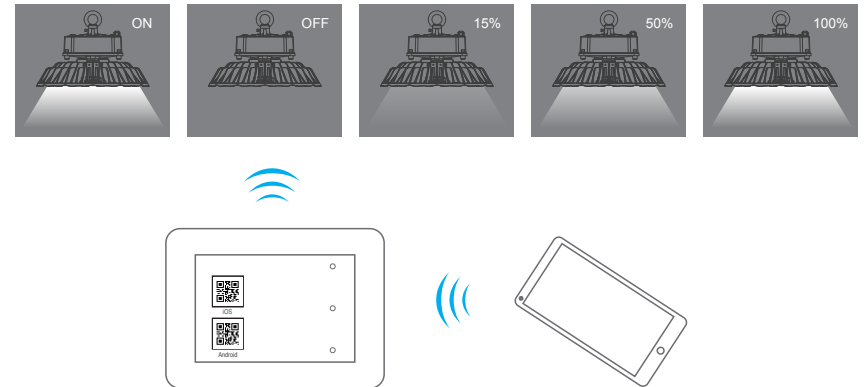
- (1) The QR code: the information about address of the iLightsIn application, you can scan it by using your MS code scanner and download.
- (2) RF resetting key: press the button for 3s will make the products restore to factory settings.
- (3) USB power jack: inserting the USB into the socket when the AC adapter power is supplying.
- (4) The AC adapter: let the plug terminal access to the AC, then plug the USB into the ZigbeeGateway to provide the power (DC 5V 500mA).

2. Instructions

- (1) You have to download the application "iLightsIn" and install it before using the products. The application can be downloaded through entering the website after you scan the QR code by using your smart phone. Besides you can also download it by searching the key word "iLightsIn" in the software platform such as the APP Store, software store.etc.
- (2) By means of the AC adapter to supply the product with power. Once the product gets the power, it will launch the hotspot called "iLightsInxxxxx" automatically.



- (3) After the network of your phone connects to the WIFI hotspot, you can launch the "iLightsIn" to control the dimming of the light.



3. Tips

- (1) The hotspot launched by the product can only be connected by a cell phone each time, it means that only one cell phone can control the dimming of the light in the network.
- (2) Our product possesses the relaying function. In other words, the communication distance can be extended under the conditions of operating multiple products(usually, the community distance is about 200m without obstruction, it will go down to 80m after going through one or two walls.).